

CARLISLE RD

Dover, PA 17315 • Opportunities up to 9.36 Acres



Benefits



- 9+ acres commercial
- Public water available/Public sewer available 2021
- Curb cut already installed
- Adjacent to Dollar General

More Info



Ryan Myers
rmyers@bennettwilliams.com



CARLISLE RD: EXECUTIVE SUMMARY

Dover, PA 17315 • Opportunities Up To 9.36 Acres



PROPERTY SUMMARY

Sale Price:	\$450,000
Property Type:	Commercial
Lot Size:	9.36 Acres
APN #:	24-000-KF-0098-00-00000
Zoning:	Commercial

PROPERTY OVERVIEW

Carlisle Road is approximately 9 acres of commercially zoned land located north of Dover. The property has a recently installed curb cut off Route 74 that provides access to the site and the adjacent Dollar General. The land is flat. There is a billboard lease and a short-term lease to farm the land. Public water is available along Carlisle Road. Public sewer will be available in 2021. Permitted uses include: Auto repair service, contractor's office, farm equipment sales, church, landscaping business, funeral homes.

PROPERTY HIGHLIGHTS

- 9+ acres commercial
- Curb cut already installed
- Public water available/Public sewer available 2021
- Adjacent to Dollar General

DEMOGRAPHICS

	3 Miles	5 Miles	7 Miles
Total Households:	7,266	18,107	31,044
Total Population:	17,595	45,049	78,191
Average HH Income:	\$60,711	\$65,991	\$69,502

Information shown is purported to be from reliable sources. No representation is made to the accuracy thereof, and is submitted subject to errors, omissions, change in price, prior sale, withdrawal without notice, or other conditions.

CARLISLE RD: DEMOGRAPHICS

Dover, PA 17315 • Opportunities Up To 9.36 Acres

Demographics



Population

3 Miles	5 Miles	7 Miles
17,595	45,049	78,191

Daytime Population

3 Miles	5 Miles	7 Miles
3,537	8,734	41,947

Average Household Income

3 Miles	5 Miles	7 Miles
\$60,711	\$65,991	\$69,502

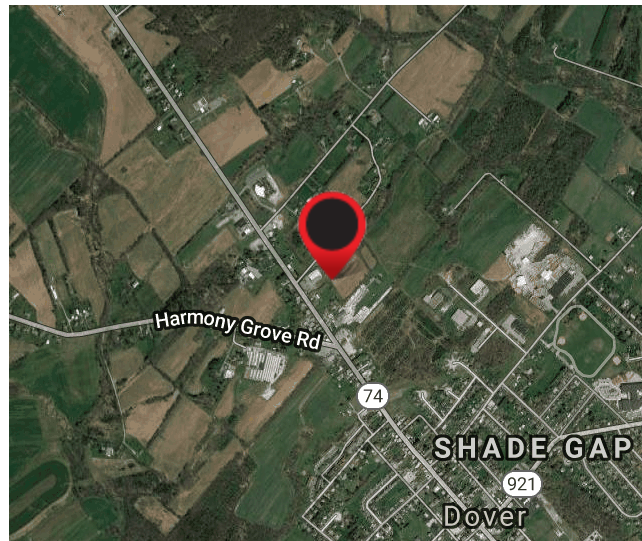
Number of Households

3 Miles	5 Miles	7 Miles
7,266	18,107	31,044

Traffic Counts



Route 74
12,000 CPD



CARLISLE RD: MARKET OVERVIEW

Dover, PA 17315 • Opportunities Up To 9.36 Acres

