

Shoppes at South Abington

1101 Northern Blvd | Clarks Summit, PA 18411

Available
± 1,200 - 10,780 SF



Property Overview

Shoppes at South Abington is a 37,399 square-foot new construction retail project ideally located in South Abington Township, Pennsylvania, situated along Northern Boulevard (Route 11), which sees over ±23,000 VPD. The project has deals in place with national retailers that include Wendy's, Starbucks, Jersey Mike's, and Sheetz.

Nearby Retailers



Adam Hagerman | Dave Nicholson | Brad Rohrbaugh | Chad Stine
For Leasing Information: 717.843.5555 | Learn more online at www.bennettwilliams.com



COMMERCIAL BROKERAGE. *Redefined*

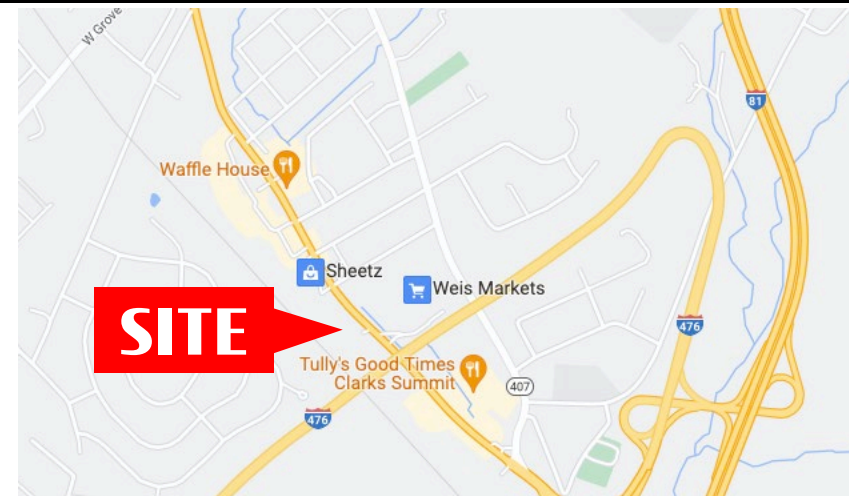
1101 Northern Blvd,
Clarks Summit, PA 18411

Shoppes at South Abington

± 1,200 - 10,780 SF
Available For Lease

Location

The project is strategically positioned with significant frontage in the market's primary retail corridor along Northern Boulevard. The site benefits from the high-volume traffic flow of Northern Boulevard, as well as its proximity to I-476 and I-81 which are major freeways in the market. Northern Boulevard acts as the area's focal point for retail, with a trade area that extends more than 5 miles, attracting a vast customer base. With a high concentration of traffic drive by the surrounding retail, and highways, the site pulls from not just the immediate area, but surrounding market points as well.

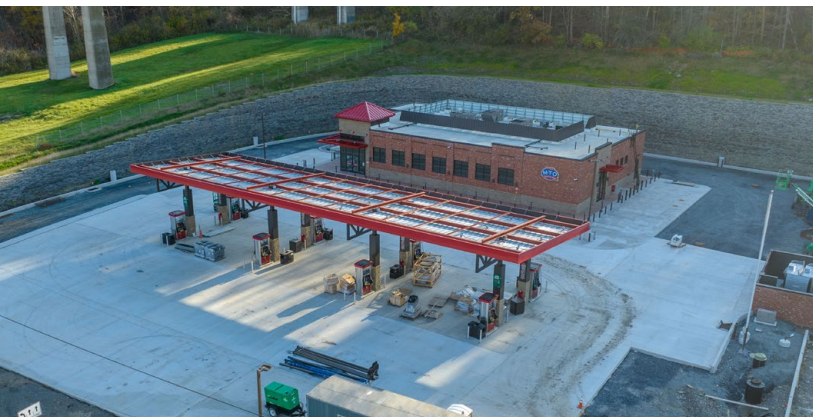


Trade Area

Adding to the stability of the project, 1101 Northern Boulevard shows a 15-minute drive time demographic of over 188,260 people with household incomes of more than \$67,208 and daytime employment demographics equally as strong with 107,596. The demographics within a 5-mile radius include 75,326 people in 30,548 homes, a labor force of 32,136 with an average household income of \$61,995. The area's growth since 2000 has increased over 4.1% with over 1,331 new homes.

DEMOGRAPHICS	3 MILE	5 MILE	7 MILE
TOTAL POPULATION	22,032	75,326	149,727
TOTAL EMPLOYEES	15,745	32,136	69,369
AVERAGE HHI	\$84,658	\$61,995	\$56,990
TOTAL HOUSEHOLDS	8,829	30,548	61,117

TRAFFIC COUNTS: Northern Blvd (Hwy 6) - ±23,000 VPD



Adam Hagerman | Dave Nicholson | Brad Rohrbaugh | Chad Stine
For Leasing Information: 717.843.5555 | Learn more online at www.bennettwilliams.com



COMMERCIAL BROKERAGE. *Redefined.*

1101 Northern Blvd,
Clarks Summit, PA 18411

Shoppes at South Abington

± 1,200 - 10,780 SF
Available For Lease

SITE PLAN



Northern Blvd (Hwy 6) - ±23,131 VPD

SPACE	TENANT	AREA (SF)	SPACE	TENANT	AREA (SF)	SPACE	TENANT	AREA (SF)
1a	Wendy's	2,456	4	AVAILABLE	1,450	8-12	AVAILABLE	10,780
1	AVAILABLE	2,270	5	Jersey Mike's	1,450	13	Mavis Discount Tires	7,380
2	AVAILABLE	1,450	6	European Wax Center	1,850	14	Sheetz	6,070
3	AVAILABLE	1,200	7	Starbucks	2,341			



Adam Hagerman | Dave Nicholson | Brad Rohrbaugh | Chad Stine
For Leasing Information: 717.843.5555 | Learn more online at www.bennettwilliams.com



COMMERCIAL BROKERAGE. *Redefined.*

1101 Northern Blvd,
Clarks Summit, PA 18411

Shoppes at South Abington

± 1,200 - 10,780 SF
Available For Lease

MARKET AERIAL



Shoppes at South Abington

SHEETZ **Wendy's**

Starbucks **Jersey Mike's Subs** **MAVIS DISCOUNT TIRE**



Adam Hagerman | Dave Nicholson | Brad Rohrbaugh | Chad Stine
For Leasing Information: 717.843.5555 | Learn more online at www.bennettwilliams.com

ACTIVE MEMBER OF:
RETAIL BROKERS NETWORK

COMMERCIAL BROKERAGE. *Redefined.*



OUR LOCATIONS:

YORK OFFICE:

3528 Concord Rd.
York, PA 17402

LANCASTER OFFICE:

150 Farmington Lane, Suite 201
Lancaster, PA 17601

EXTON OFFICE:

1 E. Uwchlan Ave.
Suite 409, Exton, PA 19341

WILLIAMSPORT OFFICE:

1000 Commerce Park Dr, Suite 310
Williamsport, PA 17701

WEST CHESTER OFFICE:

107 E Chestnut St, Suite 107
West Chester, PA 19380

NEW JERSEY OFFICE:

236 E. Route 38, Suite 130
Moorestown, NJ 08057



LISTING AGENTS:



Adam Hagerman

ahagerman@bennettwilliams.com



Dave Nicholson

DNicholson@bennettwilliams.com



Brad Rohrbaugh

BRohrbaugh@bennettwilliams.com



Chad Stine

CStine@bennettwilliams.com

CONTACT US

717.843.5555 | www.bennettwilliams.com



About Bennett Williams

Since its founding in 1956, Bennett Williams Commercial, Inc. has offered full Commercial Real Estate services to the Central Pennsylvania region and beyond. We have served thousands of commercial, industrial and retail clients as we have grown in size and reputation. With our team of both experienced and knowledgeable executives as well as young and energetic professionals, we have the team to handle any commercial real estate need.

Bennett Williams is a member of the Retail Brokers Network (RBN), a partnership of the best regional retail brokerage firms servicing all of the major markets across the United States. Our affiliates are handpicked ensuring that our clients receive top quality service and representation in any market they need help in, with 61 offices across 65+ markets and 700+ members.

