

5470 Perkiomen Ave  
Reading, PA 19606

# Shelbourne S Q U A R E

1,600 - 6,780 SF + 2 Pads  
**Available For Lease**



## Property Overview

Shelbourne Square, a 267,461-square foot dual anchored retail shopping center located in Reading, Pennsylvania at a signalized intersection on Route 422 (38,000 VPD) just 26 miles East of Lancaster, PA., 26 miles West of King of Prussia, PA., and 43 miles from Center City Philadelphia. The center is anchored by one of Berks County's dominant grocers, Redner's Warehouse Markets and the national home improvement retailer, Home Depot. Shelbourne Square is also home to other leading retailers such as Subway, Cosmo Prof, H&R Block, Dollar Tree, Applebee's, McDonald's, and Planet Fitness, to name a few.

## Join National Retailers



**REDNER'S**



**H&R BLOCK®**



**Blake Shaffer | Gary Russell | Brad Rohrbaugh | Chad Stine**  
For Leasing Information: 717.843.5555 | Learn more online at [www.bennettwilliams.com](http://www.bennettwilliams.com)



COMMERCIAL BROKERAGE. *Redefined.*

## Location

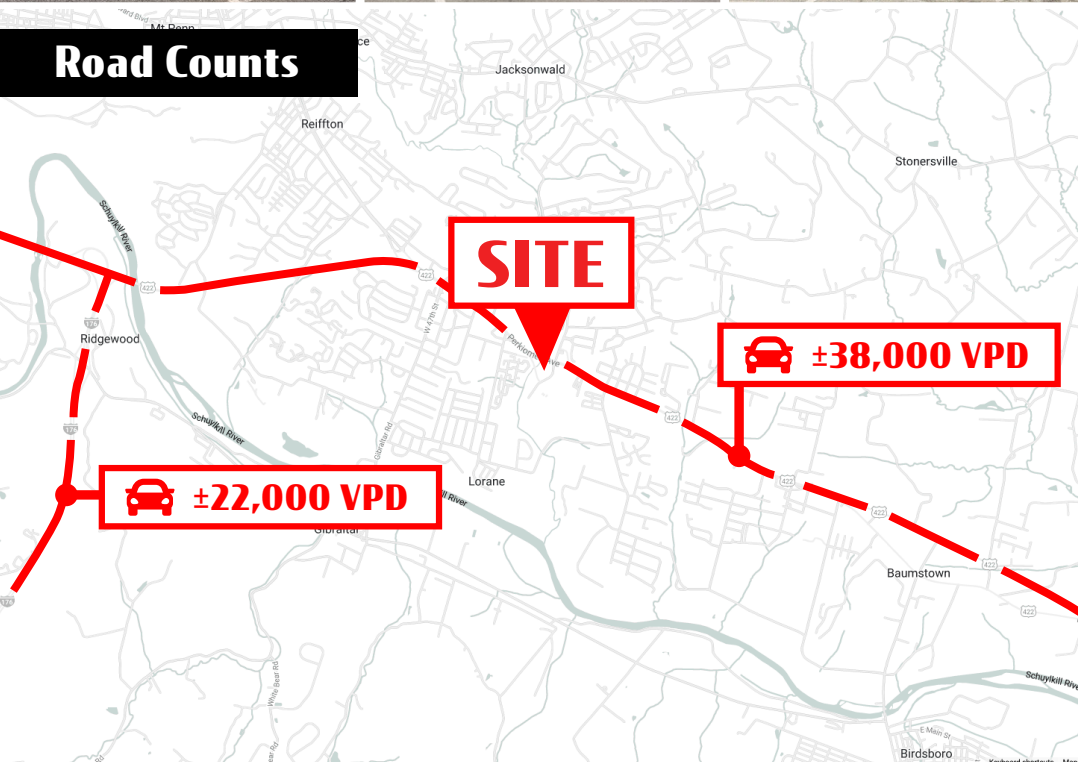
Shelbourne Square is strategically positioned with significant frontage along one of the market's primary retail corridors, Route 422. The center benefits from the high-volume traffic flow of Route 422 and its signalized intersection. With the convenience of the project's location, it has a draw that extends more than 5 miles, which attracts a vast customer base. With its ideal location, the project services not only the immediate trade area, but surrounding market points as well.



## Trade Area

Adding to the stability of the project, Shelbourne Square shows a 20-minute drive time demographic of over 385,311 people with household incomes more than \$76,405 and daytime employment demographics equally as strong with 189,677. The demographics within a 10-mile radius include 283,711 people in 108,884 homes, a labor force of 145,653 with an average household income of \$73,572. The areas growth since 2000 has increased over 9.3% with over 10,201 new homes.

## Road Counts



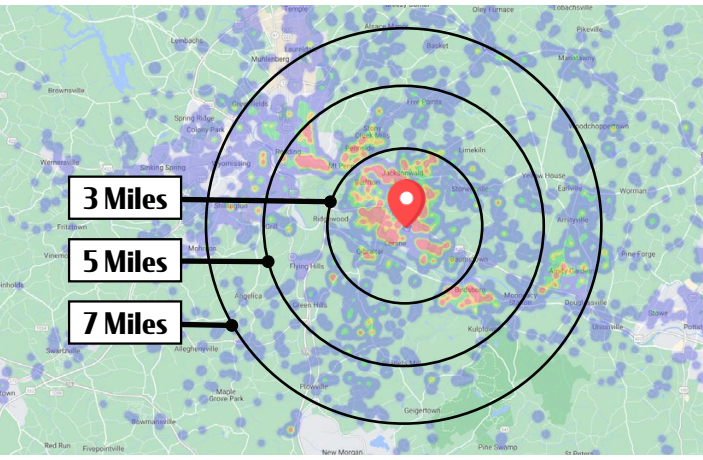
DEMOGRAPHICS	3 MILE	5 MILE	7 MILE
TOTAL POPULATION	32,716	54,849	68,700
TOTAL EMPLOYEES	19,291	26,148	27,976
AVERAGE HHI	\$74,519	\$81,139	\$81,611
TOTAL HOUSEHOLDS	13,586	22,408	27,979

**TRAFFIC COUNTS: Perkiomen Ave (Rt 422) - ±38,000 VPD**

5470 Perkiomen Ave  
Reading, PA 19606

# Shelbourne S Q U A R E

1,600 - 6,780 SF + 2 Pads  
**Available For Lease**



## VISITS PER YEAR

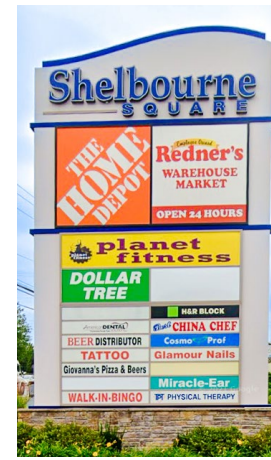
1.7 Million

## AVG. DWELL TIME

57 Minutes

## LOCAL RANKING

7/13



**DOLLAR TREE**

## ANNUAL VISITS

464.6K

## STATE RANKING

3/281




**REDNER'S**  
Annual Visits: 54K



**DOLLAR TREE**  
Annual Visits: 464.6K  
3/282 State Ranking



**planet fitness**  
Annual Visits: 398.6K



**THE HOME DEPOT**  
Annual Visits: 382.7K



**McDonald's**  
Annual Visits: 130.2K

422

38,000 VPD



Blake Shaffer | Gary Russell | Brad Rohrbaugh | Chad Stine  
For Leasing Information: 717.843.5555 | Learn more online at [www.bennettwilliams.com](http://www.bennettwilliams.com)

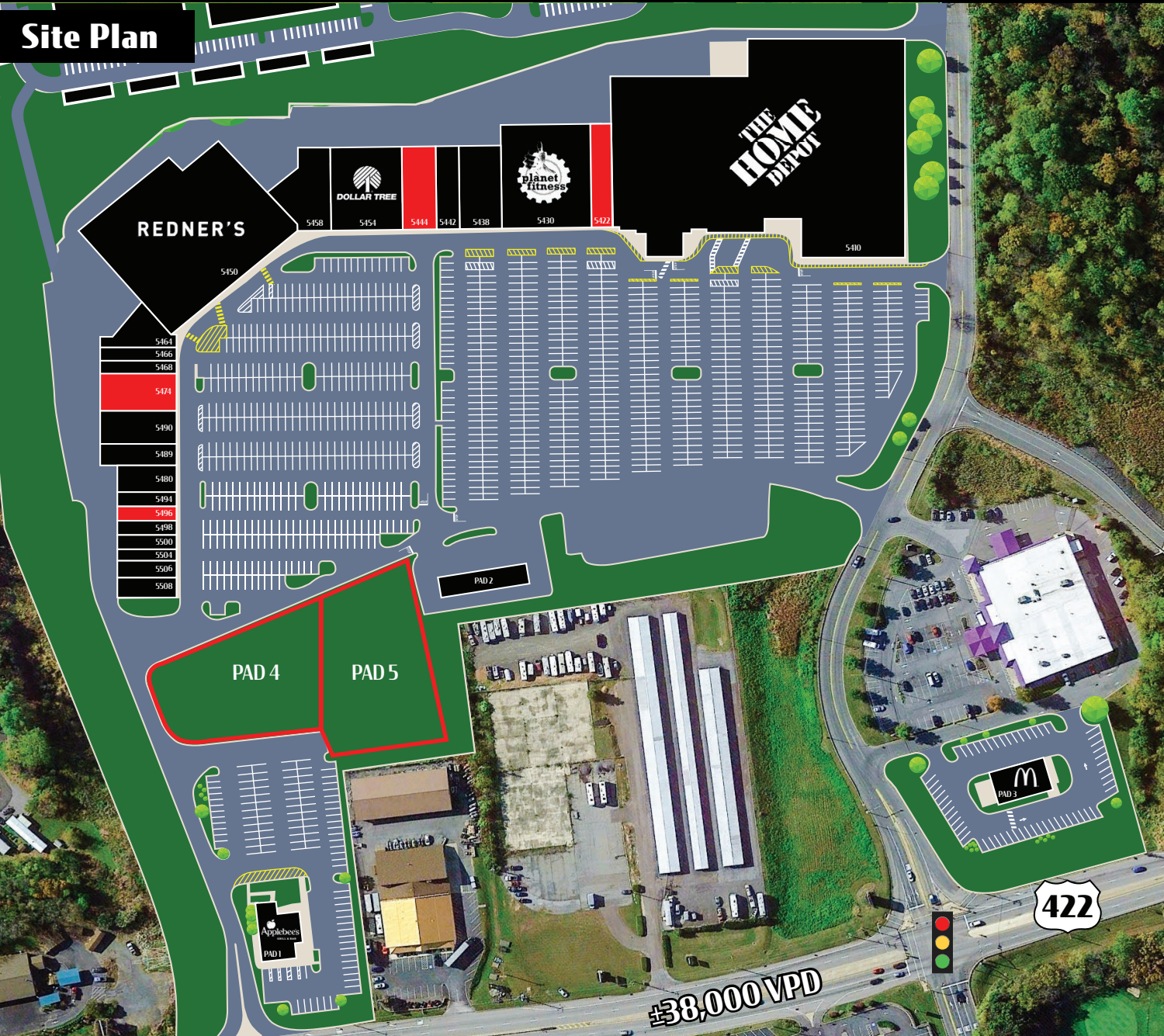
ACTIVE MEMBER OF:  
**RETAIL** BROKERS NETWORK

COMMERCIAL BROKERAGE. *Redefined.*

5470 Perkiomen Ave  
Reading, PA 19606

# Shelbourne S Q U A R E

1,600 - 6,780 SF + 2 Pads  
**Available For Lease**



SUITE	TENANT	AREA (SQ FT)
Pad 1	Applebee's	5,962
Pad 2	Redner's Fuel	
Pad 3	McDonald's	4,087
<b>PAD 4</b>	<b>AVAILABLE</b>	<b>1 AC</b>
<b>PAD 5</b>	<b>AVAILABLE</b>	<b>1 AC</b>
5468	Giovanna's Pizza	2,000
<b>5422</b>	<b>AVAILABLE</b>	<b>4,500</b>
5410	Home Depot	108,928
5430	Planet Fitness	22,500
5438	Life Plasma	8,000
<b>5444</b>	<b>AVAILABLE</b>	<b>6,780</b>
5450	Redner's Markets	47,900
5454	Dollar Tree	11,934
5458	Endeavors On Ridgeway	7,800
5464	Saigon Banh Mi	4,880
5466	A King's Experience Grooming Parlor	2,050
<b>5474</b>	<b>AVAILABLE</b>	<b>5,500</b>
5490	Cosmo Prof	4,000
5486	Beer Distributor	2,500
5480	Luxe Laundromat	5,000
5494	The UPS Store	1,200
<b>5496</b>	<b>AVAILABLE</b>	<b>1,600</b>
5498	Glamour Nails	1,800
5500	Amdent Ltd	1,800
5442	Taylor Physical Therapy	3,240
5504	Miracle Ear	1,500
5506	Best China Chef	2,000
5508	H&R Block	2,000
<b>CENTER TOTAL</b>		<b>267,461</b>

**BW COMMERCIAL** Blake Shaffer | Gary Russell | Brad Rohrbaugh | Chad Stine  
For Leasing Information: 717.843.5555 | Learn more online at [www.bennettwilliams.com](http://www.bennettwilliams.com)

ACTIVE MEMBER OF:  
**RETAIL BROKERS NETWORK**

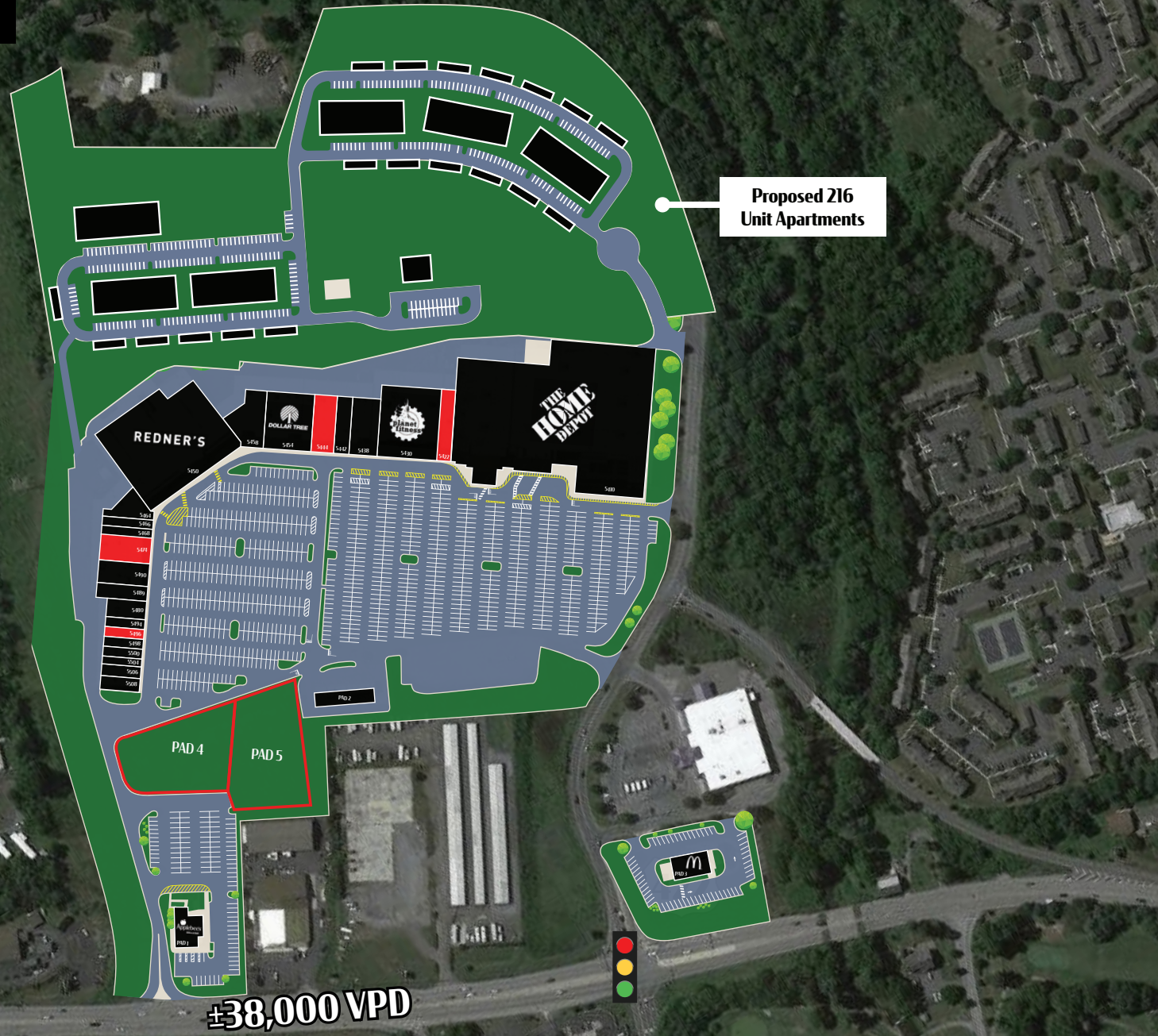
COMMERCIAL BROKERAGE. *Redefined.*

5470 Perkiomen Ave  
Reading, PA 19606

# Shelbourne S Q U A R E

1,600 - 6,780 SF + 2 Pads  
**Available For Lease**

## Site Plan/ Future Development



Blake Shaffer | Gary Russell | Brad Rohrbaugh | Chad Stine  
For Leasing Information: 717.843.5555 | Learn more online at [www.bennettwilliams.com](http://www.bennettwilliams.com)



COMMERCIAL BROKERAGE. *Redefined.*

# Market Aerial



**Exeter Commons**

Target | **LOWE'S** FINE WINE & GOOD SPIRITS | **GIANT** | **FIVE BELOW**

petco | Chick-fil-A | MOE'S SOUTHWEST GRILL | SONIC

**FIVE GUYS** BURGERS and FRIES | Panera BREAD | Red Robin

Boscov's

ALDI

Arby's

BURGER KING

Wawa

DUNKIN'

McDonald's

Wendy's

Applebee's GRILL + BAR

KFC

**Shelbourne SQUARE**

THE HOME DEPOT | **REDNER'S**

DOLLAR TREE

The UPS Store | planet fitness

H&R BLOCK | **SUBWAY**

Proposed 216 Unit Apartments

Walmart



# Bennett Williams

COMMERCIAL REAL ESTATE

## OUR LOCATIONS:

### YORK OFFICE:

3528 Concord Rd.  
York, PA 17402

### LANCASTER OFFICE:

150 Farmington Lane, Suite 201  
Lancaster, PA 17601

### EXTON OFFICE:

1 E. Uwchlan Ave.  
Suite 409, Exton, PA 19341

### STATE COLLEGE OFFICE:

330 Innovation Blvd, Suite 205  
State College, PA 16803

### WEST CHESTER OFFICE:

107 E Chestnut St, Suite 1  
West Chester, PA 19380

### NEW JERSEY OFFICE:

236 E. Route 38, Suite 130  
Moorestown, NJ 08057

## LISTING AGENTS:



### Blake Shaffer

BShaffer@bennettwilliams.com



### Gary Russell

GRussell@bennettwilliams.com



### Brad Rohrbaugh

BRohrbaugh@bennettwilliams.com



### Chad Stine

CStine@bennettwilliams.com

## CONTACT US

717.843.5555 | [www.bennettwilliams.com](http://www.bennettwilliams.com)

LANDLORD  
REPRESENTATION

TENANT  
REPRESENTATION

INVESTMENT  
SALES

PROPERTY  
MANAGEMENT



## About Bennett Williams

Since its founding in 1956, Bennett Williams Commercial, Inc. has offered full Commercial Real Estate services to the Central Pennsylvania region and beyond. We have served thousands of commercial, industrial and retail clients as we have grown in size and reputation. With our team of both experienced and knowledgeable executives as well as young and energetic professionals, we have the team to handle any commercial real estate need.

Bennett Williams is a member of the Retail Brokers Network (RBN), a partnership of the best regional retail brokerage firms servicing all of the major markets across the United States. Our affiliates are handpicked ensuring that our clients receive top quality service and representation in any market they need help in, with 61 offices across 65+ markets and 700+ members.

