

1755 WHITEFORD RD

YORK, PA | 17402



±5,941 SF
FOR LEASE

**TENANT
RELOCATING**

PROPERTY OVERVIEW

1755 Whiteford Road has a total of 5,941 SF available for lease. This includes up to 1,469 square feet of office space and 4,100 SF of warehouse space. The space has two access points from Whiteford Road, features paved parking, and has excellent visibility along Route 30 (49,000 VPD). The site sits within minutes of major traffic generating developments such as York Galleria, and York Towne Center to name a few. The site benefits from a 10-mile radius demographic of over 277,997 people in 111,874 homes and an average household income of \$76,256. Located in a dense residential and retail area with a trade area extending over 5 miles, 1755 Whiteford Road is perfect for any retailer looking to enter the York market in a popular corridor.



DEMOGRAPHICS	3 MILE	5 MILE	7 MILE
POPULATION	80,999	150,867	214,019
EMPLOYEES	44,844	74,694	93,609
AVERAGE HHI	\$86,691	\$100,160	\$102,656
HOUSEHOLDS	31,921	58,704	83,896

Arsenal Rd (US-30): ±53,000 VPD



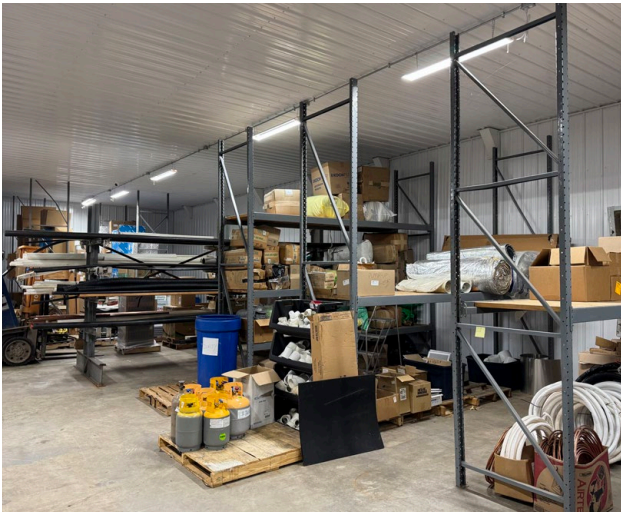
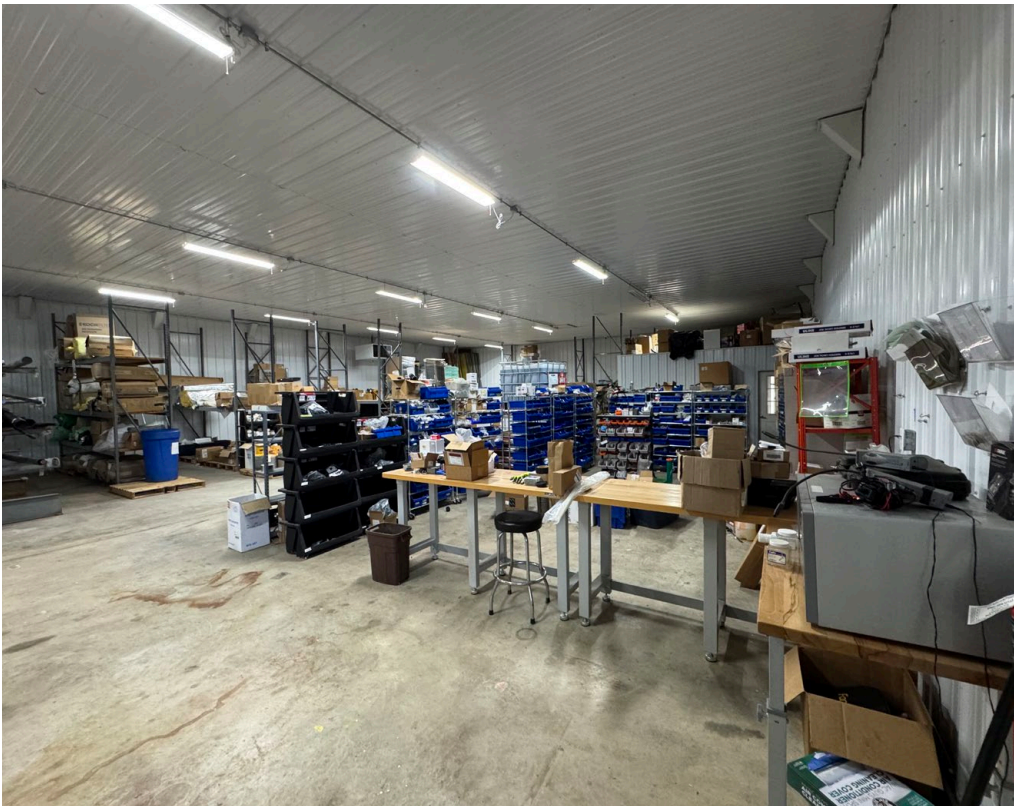
BLAKE SHAFFER | CALE BRUSO | BRAD ROHRBAUGH | CHAD STINE

For Leasing Information: 717.843.5555 | Learn more online at www.bennettwilliams.com

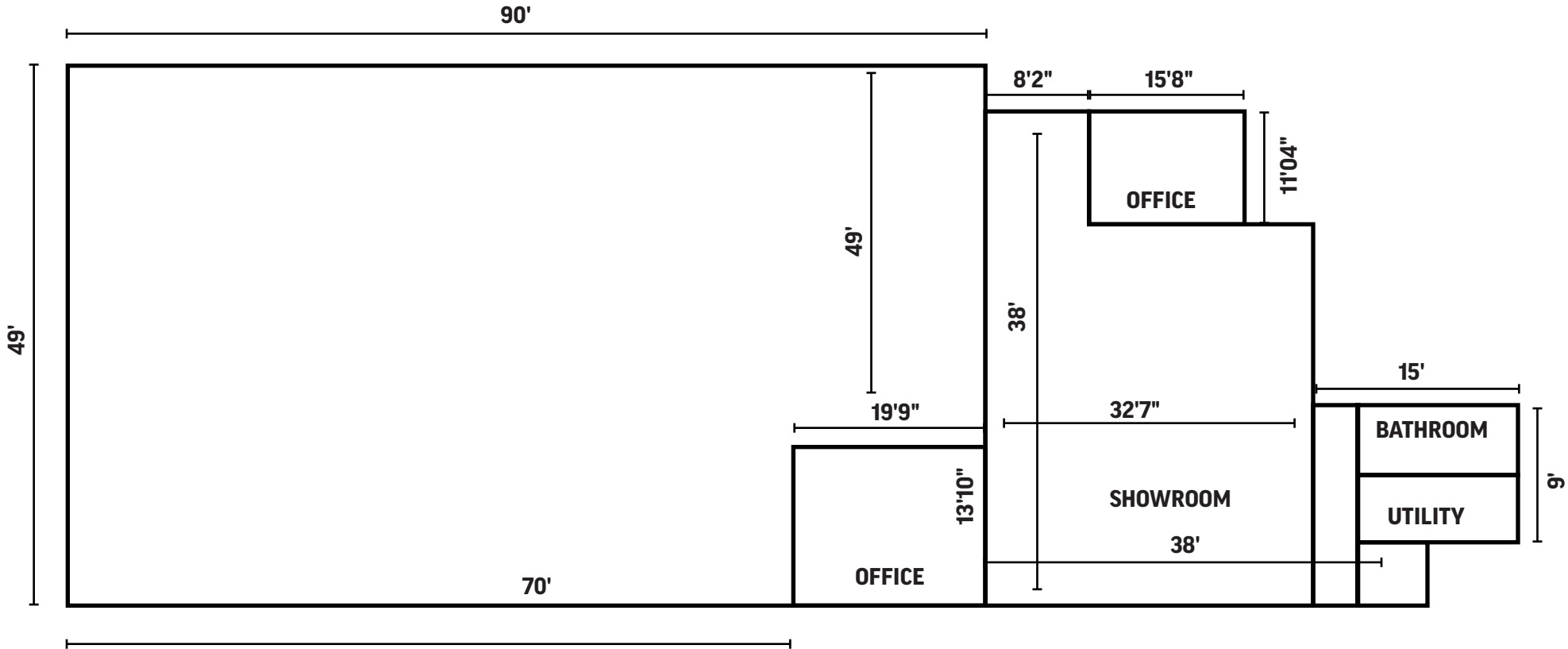


COMMERCIAL BROKERAGE. *Redefined.*

INTERIOR PHOTOS



FLOOR PLAN



Measurements are an estimate. It's recommend a tenant seek an architect for exact measurements.

MARKET AERIAL

SITE

YORK GALLERIA MALL

Boscov's **Marshalls**
 SHOE DEPT. **verizon**
H&M **ExtraSpace Storage** **HOLLYWOOD Casino**
 YORK

Target **Michaels**
 MAKE CREATIVITY HAPPEN
KOHL'S

YORK TOWN CENTER

DICK'S SPORTING GOODS **MATTRESS FIRM** **ROSS DRESS FOR LESS**
TORRID **BOB'S FURNITURE**
ULTA BEAUTY **BEST BUY** **LONGHORN STEAKHOUSE**
BARNES & NOBLE BOOKSELLERS **pepperoni's**

STONYBROOK SHOPPING CENTER

Saubell's markets **FITNESS 1440**
Northwest
Central Bark **AVIS** **MONRO**
 AUTO SERVICE **and** TIRE CENTERS

YORK MARKETPLACE

LOWE'S **Starbucks** **GIANT**
FIREHOUSE SUBS
 FOUNDED BY FIREMEN
GameStop
CRUNCH **ROUND & CLOCK DINER**
 CATERING & DELIVERY

FIREHOUSE SHOPPES

MOE'S SOUTHWEST GRILL **MILAN Laser Hair Removal**
SportClips (HAIRCUTS) **AT&T**

DUNKIN'

Walgreens

weis

HARBOR FREIGHT TOOLS

MAMIS DISCOUNT TIRE

TACO BELL

ALDI

THE HOME DEPOT

YORK MALL SHOPPING CENTER

Walmart **sam's club**
DOLLAR TREE **SALLY BEAUTY**
Panera BREAD **Applebee's GRILL + BAR** **Chick-fil&** **BUFFALO WILD WINGS**

DQ

Maple Donuts

Holiday Inn Express

RITE AID



BLAKE SHAFFER | CALE BRUSO | BRAD ROHRBAUGH | CHAD STINE
 For Leasing Information: 717.843.5555 | Learn more online at www.bennettwilliams.com



COMMERCIAL BROKERAGE. *Redefined.*

OUR LOCATIONS:

YORK OFFICE:

3528 Concord Rd.
York, PA 17402

LANCASTER OFFICE:

150 Farmington Lane, Suite 201
Lancaster, PA 17601

EXTON OFFICE:

1 E. Uwchlan Ave.
Suite 409, Exton, PA 19341

STAE COLLEGE OFFICE:

330 Innovation Blvd, Suite 205
State College, PA 16803

NEW JERSEY OFFICE:

236 E. Route 38, Suite 130
Moorestown, NJ 08057

LISTING AGENTS:



Blake Shaffer

BShaffer@bennettwilliams.com



Cale Bruso

CBruso@bennettwilliams.com



Brad Rohrbaugh

BRohrbaugh@bennettwilliams.com



Chad Stine

CStine@bennettwilliams.com

CONTACT US

717.843.5555 | www.bennettwilliams.com



About Bennett Williams

Since its founding in 1956, Bennett Williams Commercial, Inc. has offered full Commercial Real Estate services to the Central Pennsylvania region and beyond. We have served thousands of commercial, industrial and retail clients as we have grown in size and reputation. With our team of both experienced and knowledgeable executives as well as young and energetic professionals, we have the team to handle any commercial real estate need.

Bennett Williams is a member of the Retail Brokers Network (RBN), a partnership of the best regional retail brokerage firms servicing all of the major markets across the United States. Our affiliates are handpicked ensuring that our clients receive top quality service and representation in any market they need help in, with 61 offices across 65+ markets and 700+ members.

