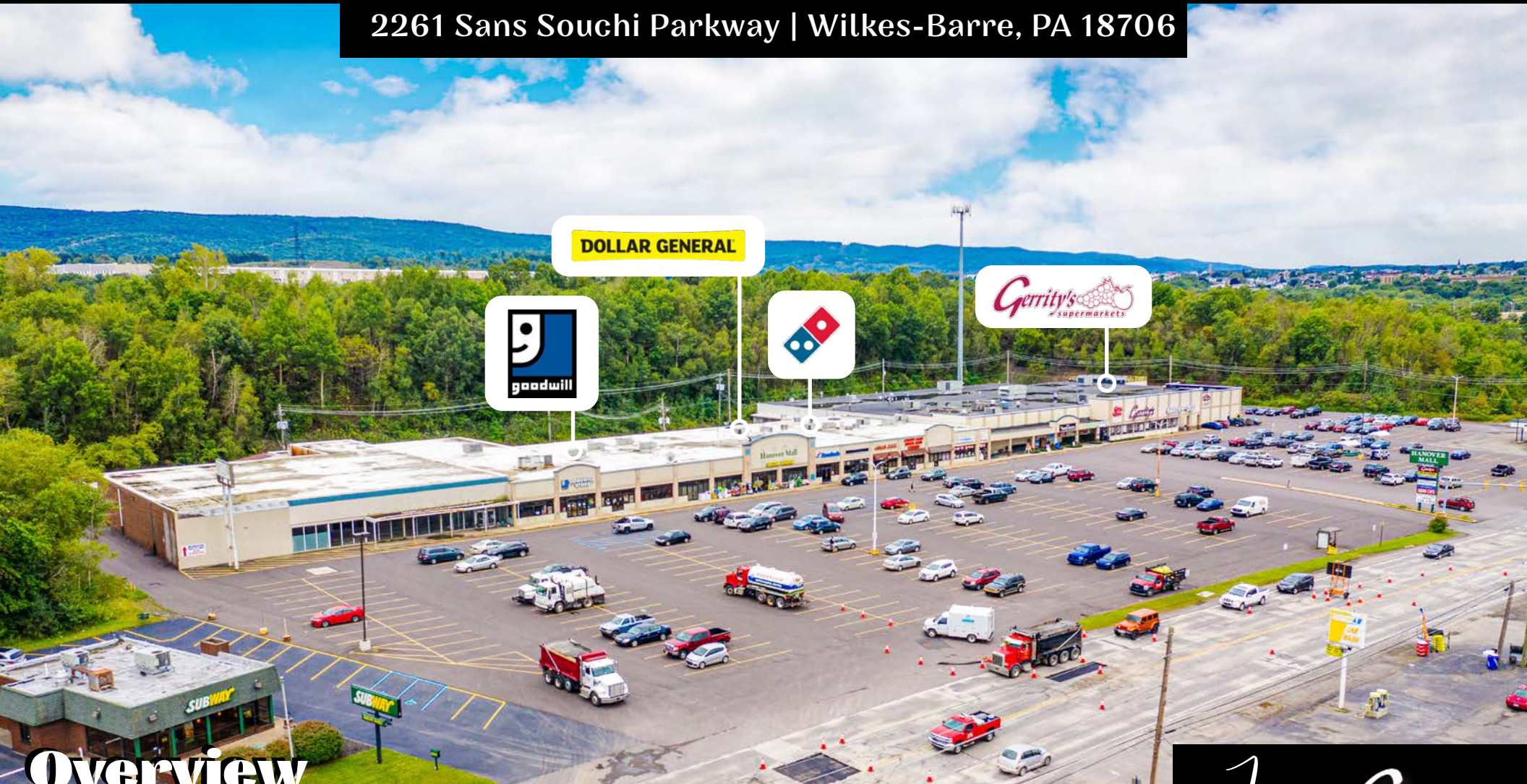


± 4,943 - 22,000 SF

Hanover Mall

FOR LEASE

2261 Sans Souci Parkway | Wilkes-Barre, PA 18706



Overview

Hanover Mall is a 112,826 square foot grocery-anchored center in Wilkes-Barre, PA. The center has strong co-tenants such as Gerrity's Supermarkets, Domino's, Dollar General, and Goodwill. The spaces are fitted for a variety of uses, including but not limited to medical, retail, and service-oriented users with plenty of parking. Hanover Mall sits on Sans Souci Parkway with close access to Route 11, pulling traffic from multiple market points.

Join:

Gerrity's
supermarkets



Domino's

Goodwill



DOLLAR GENERAL

ADAM HAGERMAN | BRAD ROHRBAUGH | CHAD STINE | CALE BRUSO
717.843.5555
www.bennettwilliams.com

York Office: 3528 Concord Rd. York, PA 17402
Exton Office: 1 East Uwchlan Avenue, Suite 409, Exton, PA 19341
Lancaster Office: 150 Farmington Lane, Suite 201, Lancaster, PA 17601
New Jersey Office: 309 Fellowship Rd, Suite 200, Mt. Laurel, NJ 08054

Bennett WILLIAMS
RETAIL

ACTIVE MEMBER OF:
RETAIL BROKERS
NETWORK

Hanover Mall

2261 Sans Souci Parkway | Wilkes-Barre, PA 18706

Available For Lease

Location

Hanover Mall is strategically placed along Sans Souci Parkway (12,000 VPD) with convenient access and great visibility. The center is minutes away from Route 11 (10,300 VPD), leading traffic north towards Scranton or south towards Bloomsburg. The trade area extends over 7 miles, and the nearby major roadways allows the site to pull from multiple market points.

Trade Area

Adding to the stability of the center, the site shows a 20-minute drive time demographic of over 121,708 people with household incomes more than \$57,743 and day-time employment demographics equally as strong with 73,700. The demographics within a 10-mile radius include 178,971 people in 77,394 homes, a labor force of 149,300 with an average household income of \$65,643. The annual household expenditure in the retail sector within a 10-mile radius is over \$1.91 Billion.



DEMOGRAPHICS	3 MILE	5 MILE	7 MILE
TOTAL POPULATION	25,817	65,007	127,360
TOTAL EMPLOYEES	10,208	19,254	57,811
AVERAGE HHI	\$60,389	\$62,061	\$65,752
TOTAL HOUSEHOLDS	11,268	26,800	52,230

TRAFFIC COUNTS: Sans Souci Parkway - ±17,000 VPD

ADAM HAGERMAN | BRAD ROHRBAUGH | CHAD STINE | CALE BRUSO
717.843.5555
www.bennettwilliams.com

York Office: 3528 Concord Rd. York, PA 17402
Exton Office: 1 East Uwchlan Avenue, Suite 409, Exton, PA 19341
Lancaster Office: 150 Farmington Lane, Suite 201, Lancaster, PA 17601
New Jersey Office: 309 Fellowship Rd, Suite 200, Mt. Laurel, NJ 08054

Bennett WILLIAMS
RETAIL

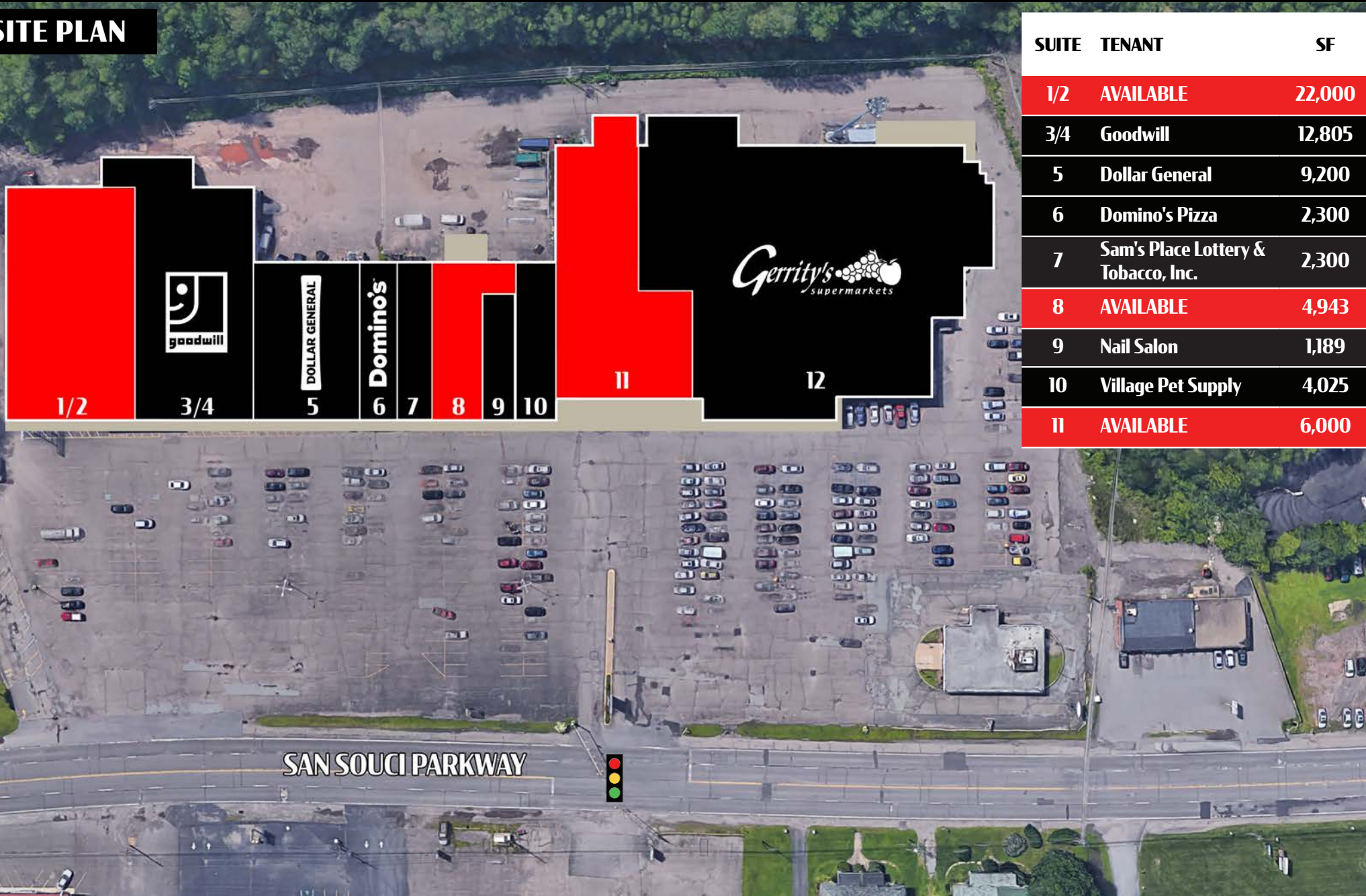
ACTIVE MEMBER OF:
RETAIL BROKERS
NETWORK

Hanover Mall

2261 Sans Souci Parkway | Wilkes-Barre, PA 18706

Available For Lease

SITE PLAN



ADAM HAGERMAN | BRAD ROHRBAUGH | CHAD STINE | CALE BRUSO
717.843.5555
www.bennettwilliams.com

York Office: 3528 Concord Rd. York, PA 17402
Exton Office: 1 East Uwchlan Avenue, Suite 409, Exton, PA 19341
Lancaster Office: 150 Farmington Lane, Suite 201, Lancaster, PA 17601
New Jersey Office: 309 Fellowship Rd, Suite 200, Mt. Laurel, NJ 08054

Bennett WILLIAMS
RETAIL

ACTIVE MEMBER OF:
RETAIL BROKERS
NETWORK

Hanover Mall

2261 Sans Souci Parkway | Wilkes-Barre, PA 18706

Available For Lease

MARKET AERIAL



ADAM HAGERMAN | BRAD ROHRBAUGH | CHAD STINE | CALE BRUSO
717.843.5555
www.bennettwilliams.com

York Office: 3528 Concord Rd. York, PA 17402
Exton Office: 1 East Uwchlan Avenue, Suite 409, Exton, PA 19341
Lancaster Office: 150 Farmington Lane, Suite 201, Lancaster, PA 17601
New Jersey Office: 309 Fellowship Rd, Suite 200, Mt. Laurel, NJ 08054

Bennett WILLIAMS
RETAIL

ACTIVE MEMBER OF:
RETAIL BROKERS
NETWORK