

± 328-50,484 SF

North Hanover Mall

1155 Carlisle Street | Hanover, PA 17331

FOR LEASE



JOIN
RETAILERS:



AT&T

verizon wireless



Blake Shaffer | Brad Rohrbaugh | Chad Stine
For Sale Information: 717.843.5555 | Learn more online at www.bennettwilliams.com



COMMERCIAL BROKERAGE. *Redefined.*

North Hanover Mall

1155 Carlisle Street | Hanover, PA | 17331

FOR LEASE
± 328 - 50,484 SF

PROPERTY OVERVIEW

The North Hanover Mall is a 411,092 square foot Shopping Mall located along Carlisle Street in Hanover, PA. The mall offers multiple points of access from Carlisle Street (22,000 V.P.D.), Eisenhower Drive, and Eichelberger Street (21,000 V.P.D.). Strong co-tenancy can be found with multiple anchors such as Dick's Sporting Goods, Burlington, and in line stores including but not limited to the AT&T, Hallmark, Pearl Vision, and Bath and Body Works.



NEARBY RETAILERS

HOBBY LOBBY

PETSMART



Walmart



five BELOW

Panera BREAD

BIG LOTS!



GIANT sam's club



Blake Shaffer | Brad Rohrbaugh | Chad Stine
For Sale Information: 717.843.5555 | Learn more online at www.bennettwilliams.com



COMMERCIAL BROKERAGE. *Redefined.*

North Hanover Mall

1155 Carlisle Street | Hanover, PA | 17331

FOR LEASE
± 328 – 50,484 SF

LOCATION

The North Hanover Mall is strategically positioned with frontage along one of the market's primary retail corridors in Hanover. The center benefits from the high-volume traffic of Carlisle Street, which is one of the areas heaviest traveled roadways. Carlisle Street acts as the area's focal point for retail, with a trade area that extends out further than 10-15 miles, attracting a vast customer base.

TRADE AREA

Adding to the stability of the project, the North Hanover Mall shows a 20-minute drive time demographic of over 158,378 people with household incomes of more than \$81,544 and daytime employment demographics equally as strong with 66,492. The demographics within a 10 mile radius include 116,641 people in 46,250 homes, a labor force of 45,243 with an average household income of \$79,289. The area's growth over the last 10 years has increased over 17.7% with 8,203 new homes.



POPULATION

3 MILE- 39,430
5 MILE- 65,391
7 MILE- 82,465



EMPLOYEES

3 MILE- 25,546
5 MILE- 33,251
7 MILE- 35,151



AVERAGE HHI

3 MILE- \$ 69,316
5 MILE- \$77,299
7 MILE- \$79,347



HOUSEHOLDS

3 MILE- 16,489
5 MILE- 26,283
7 MILE- 32,687



Blake Shaffer | Brad Rohrbaugh | Chad Stine
For Sale Information: 717.843.5555 | Learn more online at www.bennettwilliams.com



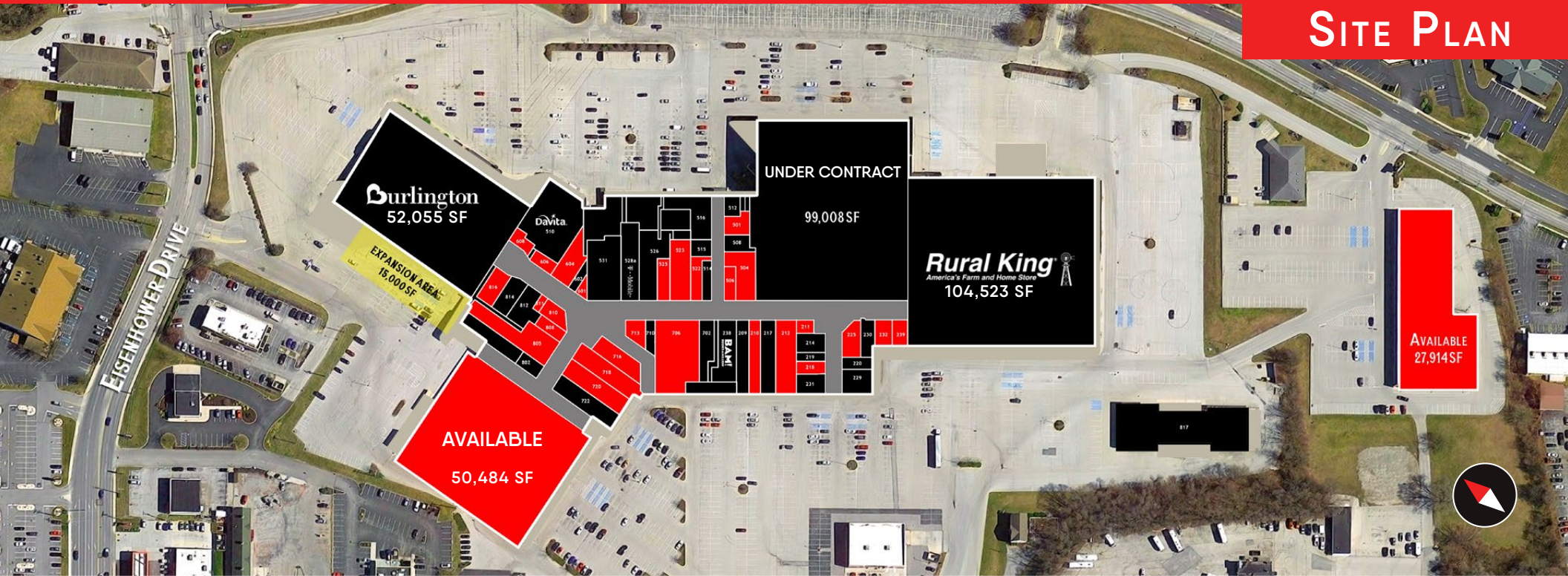
COMMERCIAL BROKERAGE. *Redefined.*

North Hanover Mall

1155 Carlisle Street | Hanover, PA | 17331

FOR LEASE
± 328 - 50,484 SF

SITE PLAN



SPACE	TENANT	AREA (SQ FT)	SPACE	TENANT	AREA (SQ FT)	SPACE	TENANT	AREA (SQ FT)	SPACE	TENANT	AREA (SQ FT)	SPACE	TENANT	AREA (SQ FT)
209	FISHBONE APPAREL	2,413	230	GNC	1,451	516	PEARLE VISION EXPRESS	3,745	606	AVAILABLE	1,078	802	EUROPE NAILS	999
210	AVAILABLE	2,400	232	AVAILABLE	1,218	520	STORAGE	414	608	AVAILABLE	746	804	OPERATIONS	
211	AVAILABLE	620	238	BOOKS-A-MILLION	3,365	523	AVAILABLE	3,513	610	DAVITA	8,637	805	AVAILABLE	4,553
212	AVAILABLE	4,210	239	AVAILABLE	931	525	AVAILABLE	1,500	702	BATH & BODY WORKS	1,927	808	AVAILABLE	1,027
214	MESSY KITCHEN CUPCAKES	1,580	501	AVAILABLE	1,368	526	COLLECTORS CLUBHOUSE	4,333	706	AVAILABLE	8,631	810	AVAILABLE	1,291
217	AT&T	3,000	504	AVAILABLE	3,105	528A	T-MOBILE	3,785	710	VERIZON WIRELESS	845	811	AVAILABLE	328
218	AVAILABLE	1,000	506	AVAILABLE	1,090	531	AVAILABLE	6,023	713	AVAILABLE	713	812	SPENCER GIFTS	2,386
219	METRO PCS	750	508	STORAGE	1,193	536	MAINTENANCE		716	AVAILABLE	2,675	814	SPARKLE IN TIME BOUTIQUE	1,890
220	HOLIDAY HAIR	1,047	512	STORAGE	923	601	AVAILABLE	444	718	AVAILABLE	3,788	816	AVAILABLE	1,807
225	AVAILABLE	1,695	514	CLAIRE'S	1,025	602	STORAGE	633	720	AVAILABLE	3,600			
229	J&S PIZZA	2,093	515	GRACE & CREPES	1,112	604	AVAILABLE	2,289	722	MATTHEW'S HALLMARK	3,627			



Blake Shaffer | Brad Rohrbaugh | Chad Stine
For Sale Information: 717.843.5555 | Learn more online at www.bennettwilliams.com



COMMERCIAL BROKERAGE. *Redefined.*

North Hanover Mall

1155 Carlisle Street | Hanover, PA | 17331

FOR LEASE
± 328 - 50,484 SF

MARKET AERIAL



Blake Shaffer | Brad Rohrbaugh | Chad Stine
For Sale Information: 717.843.5555 | Learn more online at www.bennettwilliams.com



COMMERCIAL BROKERAGE. *Redefined.*

Bennett Williams

COMMERCIAL REAL ESTATE

OUR LOCATIONS:

YORK OFFICE:

3528 Concord Rd.
York, PA 17402

EXTON OFFICE:

1 E. Uwchlan Ave.
Suite 409, Exton, PA 19341

WEST CHESTER OFFICE:

107 E Chestnut St, Suite 107
West Chester, PA 19380

LANCASTER OFFICE:

150 Farmington Lane, Suite 201
Lancaster, PA 17601

WILLIAMSPORT OFFICE:

1000 Commerce Park Dr, Suite 310
Williamsport, PA 17701

NEW JERSEY OFFICE:

236 E. Route 38, Suite 130
Moorestown, NJ 08057

LISTING AGENTS:



Blake Shaffer

BShaffer@bennettwilliams.com



Brad Rohrbaugh

BRohrbaugh@bennettwilliams.com



Chad Stine

CStine@bennettwilliams.com

CONTACT US

717.843.5555 | www.bennettwilliams.com

LANDLORD
REPRESENTATION

TENANT
REPRESENTATION

INVESTMENT
SALES

PROPERTY
MANAGEMENT



About Bennett Williams

Since its founding in 1956, Bennett Williams Commercial, Inc. has offered full Commercial Real Estate services to the Central Pennsylvania region and beyond. We have served thousands of commercial, industrial and retail clients as we have grown in size and reputation. With our team of both experienced and knowledgeable executives as well as young and energetic professionals, we have the team to handle any commercial real estate need.

Bennett Williams is a member of the Retail Brokers Network (RBN), a partnership of the best regional retail brokerage firms servicing all of the major markets across the United States. Our affiliates are handpicked ensuring that our clients receive top quality service and representation in any market they need help in, with 61 offices across 65+ markets and 700+ members.

