

STONY BATTERY CORPORATE CENTER - LOTS 25 & 26

Corporate Blvd and Marietta Ave, Lancaster, PA 17601 • Opportunities up to 12.32 Acres



Benefits



- I-1 Light Industrial
- Common stormwater management system in place
- Close proximity to Route 283, 30 and 23
- Excellent visibility
- Near Four Seasons Golf Course, Hempfield Rec Center, Weis, U-Gro Learning Center, and numerous light industrial users.

More Info



Jeff Herr

jherr@bennettwilliams.com

Jeffrey Herr

jherr2@bennettwilliams.com





PROPERTY SUMMARY

Sale Price:	\$135,000 / Acre
Property Type:	Land
Lot Size:	12.32 Acres
APN #:	3003614000000
Zoning:	I-1 Light Industrial

PROPERTY OVERVIEW

12.32 acres in Stony Battery Corporate Center available for sale or build to suit lease. Light Industrial zoning. Easy access to Route 283, Route 30, and PA 23. Near Four Seasons Golf Course, Hempfield Rec Center, Weis, U-Gro Learning Center, and numerous light industrial users.

PROPERTY HIGHLIGHTS

- I-1 Light Industrial
- Common stormwater management system in place
- Close proximity to Route 283, 30 and 23
- 12" water mains in street
- No traffic impact fees
- Excellent visibility
- Near Four Seasons Golf Course, Hempfield Rec Center, Weis, U-Gro Learning Center, and numerous light industrial users.
- Cable & Fiber Optics

DEMOGRAPHICS

	1 Mile	3 Miles	5 Miles
Total Households:	1,636	13,788	32,666
Total Population:	4,427	35,582	81,245
Average HH Income:	\$124,099	\$106,842	\$94,756

Information shown is purported to be from reliable sources. No representation is made to the accuracy thereof, and is submitted subject to errors, omissions, change in price, prior sale, withdrawal without notice, or other conditions.

Demographics



Population

1 Mile	3 Miles	5 Miles
4,427	35,582	81,245

Daytime Population

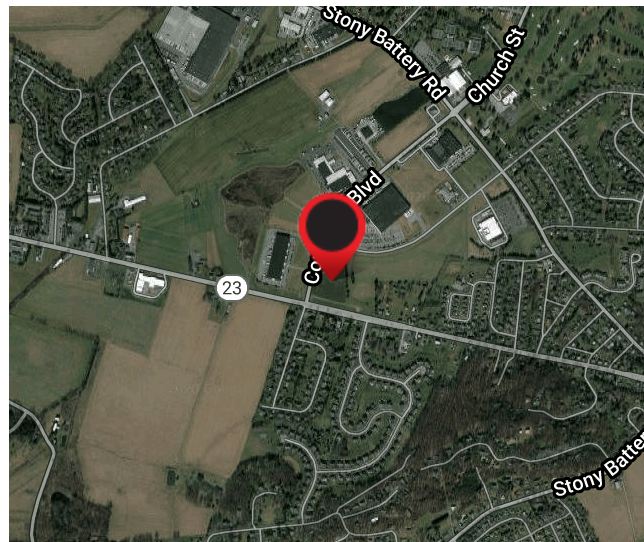
1 Mile	3 Miles	5 Miles
3,843	20,823	60,668

Average Household Income

1 Mile	3 Miles	5 Miles
\$124,099	\$106,842	\$94,756

Number of Households

1 Mile	3 Miles	5 Miles
1,636	13,788	32,666



Traffic Counts



Marietta Ave
11,000 CPD

