

# 1954 CARLISLE ROAD | York, PA

± 4,172 SF Retail Space Available

Available For Sale/Lease



**PROPERTY OVERVIEW** - 1954 Carlisle Rd is a highly visible office with apartment located on busy Carlisle Road with on site parking. Over 20,000 cars per day. 6 office/apartments, conference room, reception area and break room. Located in West Manchester township.



DEMOGRAPHICS	3 MILE	5 MILE	7 MILE
TOTAL POPULATION	64,105	127,130	177,428
TOTAL EMPLOYEES	50,878	100,855	142,632
AVERAGE HHI	\$74,302	\$73,553	\$78,107
TOTAL HOUSEHOLDS	25,657	49,252	69,947
TRAFFIC COUNTS: Carlisle St - ±21,736 VPD			

**CHRIS SEITZ**  
717.843.5555  
www.bennettwilliams.com

York Office: 3528 Concord Rd. York, PA 17402  
Exton Office: 1 East Uwchlan Avenue, Suite 409, Exton, PA 19341  
Lancaster Office: 150 Farmington Lane, Suite 201, Lancaster, PA 17601  
New Jersey Office: 309 Fellowship Rd. Suite 200, Mt Laurel, NJ 08054

**Bennett WILLIAMS**  
COMMERCIAL

ACTIVE MEMBER OF:  
**RETAIL** BROKERS  
NETWORK

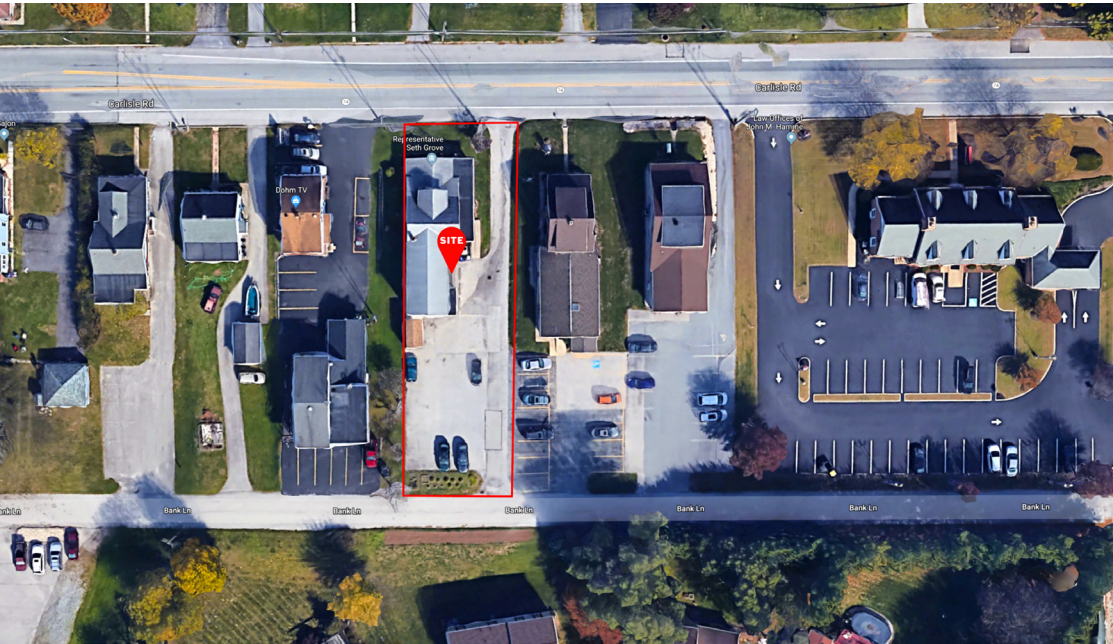
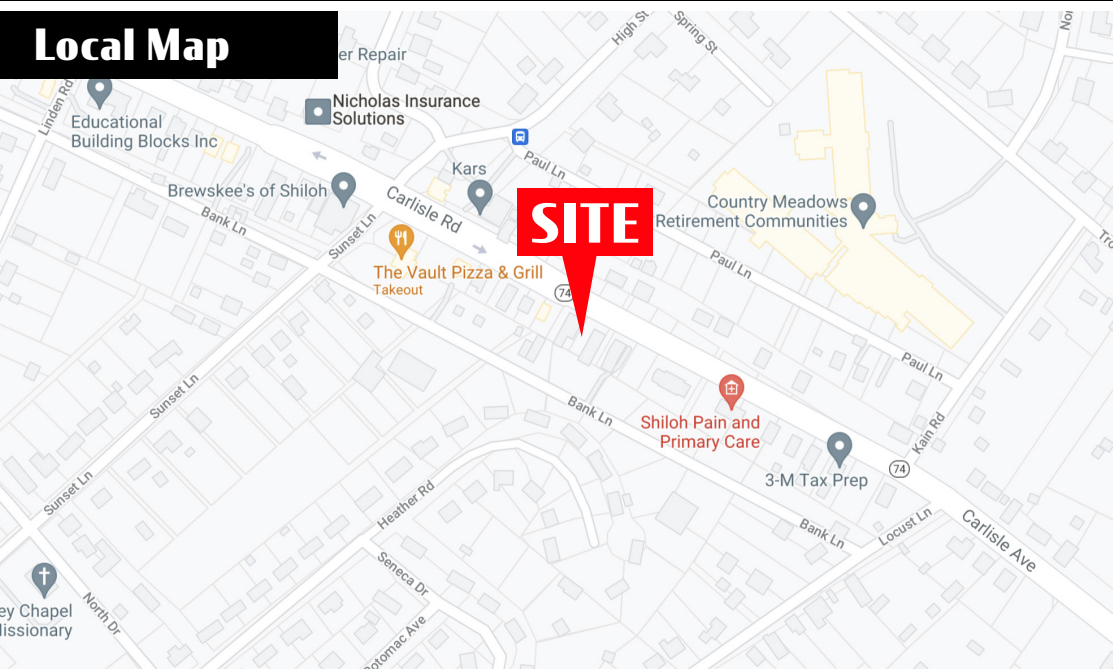


# 1954 CARLISLE ROAD | York, PA

± 4,172 SF Retail Space Available

Available For Sale/Lease

## Local Map



CHRIS SEITZ  
717.843.5555  
www.bennettwilliams.com

York Office: 3528 Concord Rd. York, PA 17402  
Exton Office: 1 East Uwchlan Avenue, Suite 409, Exton, PA 19341  
Lancaster Office: 150 Farmington Lane, Suite 201, Lancaster, PA 17601  
New Jersey Office: 309 Fellowship Rd. Suite 200, Mt Laurel, NJ 08054

**Bennett WILLIAMS**  
COMMERCIAL

ACTIVE MEMBER OF:  
**RETAIL** BROKERS  
NETWORK