

FOR LEASE

Stony Brook

SHOPPETTE

± 2,200 SF

3651 E Market Street | York, PA 17402

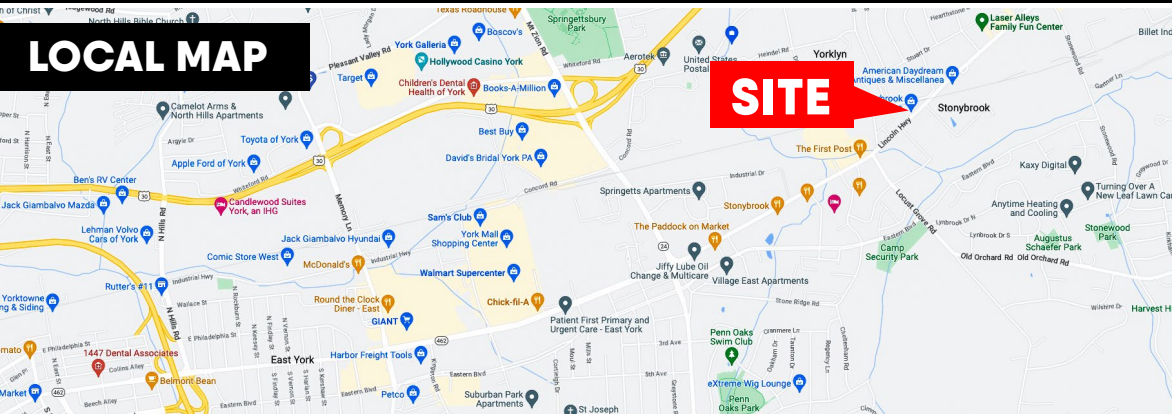


Stony Brook Shoppette is a very unique commercial property with a long history of success in the East York market, along East Market Street. The property is situated on 5 separate tax parcels that are in total 3.55 Acres in York County. With the property having such a great location along East Market Street, it sees an immense amount of traffic daily and is convenient for consumers to get to.

3651 E Market Street
York, PA 17402



± 2,200 SF
Available For Lease



DEMOGRAPHICS	1 MILE	3 MILE	5 MILE
TOTAL POPULATION	39,790	110,042	198,934
TOTAL EMPLOYEES	22,068	56,848	94,869
AVERAGE HHI	\$83,939	\$78,822	\$78,755
TOTAL HOUSEHOLDS	15,715	42,913	77,670

TRAFFIC COUNTS: E Market Street - ± 21,000 VPD



Abe Khan | Ashlee Lehman | Brad Rohrbaugh | Chad Stine
For Leasing Information: 717.843.5555 | Learn more online at www.bennettwilliams.com



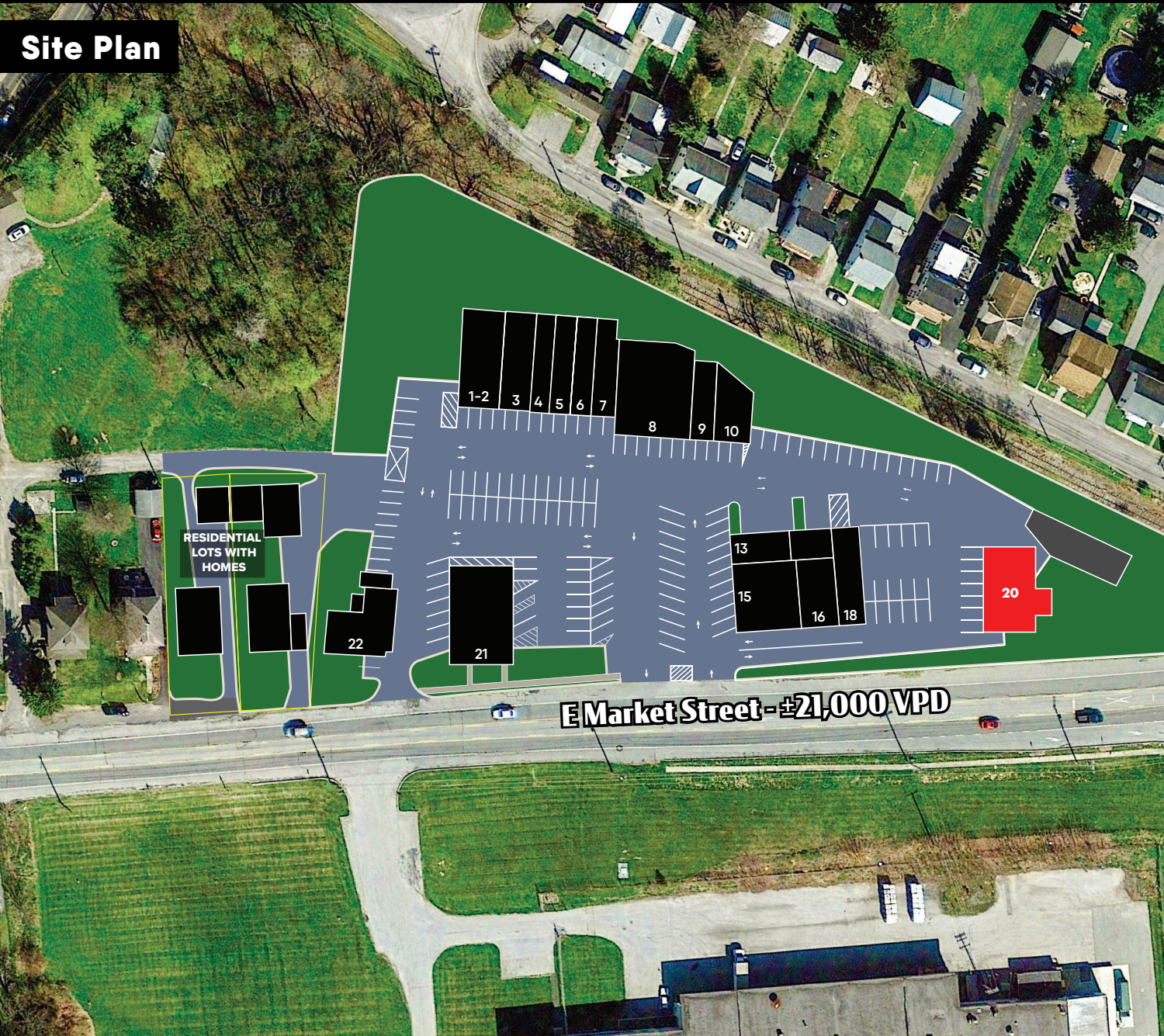
COMMERCIAL BROKERAGE. *Redefined.*

3651 E Market Street
York, PA 17402



± 2,200 SF
Available For Lease

Site Plan



SUITE	TENANT	SF
1-2	Grocery Store	1,624
3	All American Tattoo Co.	1,102
4	Donna's Nails	800
5	Dream Bridal	1,044
6	Yugen Brazilian Jiu Jitsu	1,044
7	Leased	600
8	Cornerstone Laundry	1,640
9	Ladies & Gentlemen Hair Studio	700
10	We Got Granite	1,000
13	JGJ Jewelry	680
15	Market Street Deli	575
16	Stony Brook Barber Shop	575
18	Stony Brook Gun Shop	1,650
20	AVAILABLE	2,200
21	Bark of the Town	2,500
22	The Olde T Goose	1,900
CENTER TOTAL		19,634



BW COMMERCIAL Abe Khan | Ashlee Lehman | Brad Rohrbaugh | Chad Stine
For Leasing Information: 717.843.5555 | Learn more online at www.bennettwilliams.com

ACTIVE MEMBER OF:
RETAIL BROKERS NETWORK

COMMERCIAL BROKERAGE. *Redefined.*

3651 E Market Street
York, PA 17402



± 2,200 SF
Available For Lease

Market Aerial



BW COMMERCIAL Abe Khan | Ashlee Lehman | Brad Rohrbaugh | Chad Stine
For Leasing Information: 717.843.5555 | Learn more online at www.bennettwilliams.com

ACTIVE MEMBER OF:
RETAIL BROKERS NETWORK

COMMERCIAL BROKERAGE. *Redefined.*

OUR LOCATIONS:

YORK OFFICE:

3528 Concord Rd.
York, PA 17402

LANCASTER OFFICE:

150 Farmington Lane, Suite 201
Lancaster, PA 17601

EXTON OFFICE:

1 E. Uwchlan Ave.
Suite 409, Exton, PA 19341

STATE COLLEGE OFFICE:

330 Innovation Park, Suite 205
State College, PA 16803

WEST CHESTER OFFICE:

107 E Chestnut St, Suite 107
West Chester, PA 19380

NEW JERSEY OFFICE:

236 E. Route 38, Suite 130
Moorestown, NJ 08057

LISTING AGENTS:



Abe Khan

AKhan@bennettwilliams.com



Ashlee Lehman

ALehman@bennettwilliams.com



Brad Rohrbaugh

BRohrbaugh@bennettwilliams.com



Chad Stine

CStine@bennettwilliams.com

CONTACT US

717.843.5555 | www.bennettwilliams.com



About Bennett Williams

Since its founding in 1956, Bennett Williams Commercial, Inc. has offered full Commercial Real Estate services to the Central Pennsylvania region and beyond. We have served thousands of commercial, industrial and retail clients as we have grown in size and reputation. With our team of both experienced and knowledgeable executives as well as young and energetic professionals, we have the team to handle any commercial real estate need.

Bennett Williams is a member of the Retail Brokers Network (RBN), a partnership of the best regional retail brokerage firms servicing all of the major markets across the United States. Our affiliates are handpicked ensuring that our clients receive top quality service and representation in any market they need help in, with 61 offices across 65+ markets and 700+ members.

