





ENTERPRISE WAY

Lancaster, PA | 17601

3.3 ACRES OF LAND AVAILABLE | FOR SALE



DEMOGRAPHICS	5 MILE	10 MILE	15 MILE
 POPULATION	171,978	333,731	480,895
 TOTAL EMPLOYEES	118,075	188,117	250,319
 AVERAGE HHI	\$90,848	\$89,285	\$88,483
 TOTAL HOUSEHOLDS	68,725	132,550	188,352

PROPERTY OVERVIEW

3.3 acres of commercial land for sale in Manheim Township. Business District 4 zoning permits a variety of uses including office, retail, and hospitality. The property's location just off Manheim Pike (17,000 VPC) allows for easy access to Route 283, Route 30, and the City of Lancaster. There are numerous high profile shopping centers nearby including Park City Mall, Shoppes at Belmont, the Crossings, Red Rose Commons, and more. LGH Campus is also close by.

ACTIVE MEMBER OF:
RETAIL BROKERS
NETWORK

York Office: 3528 Concord Rd. York, PA 17402
Exton Office: 1 East Uwchlan Avenue, Suite 409, Exton, PA 19341
Lancaster Office: 150 Farmington Lane, Suite 201, Lancaster, PA 17601

JEFF HERR | JEFFREY HERR
717-843-5555
www.bennettwilliams.com

Bennett Williams
COMMERCIAL

Information shown is purported to be from reliable sources. No representation is made to the accuracy thereof, and is submitted subject to errors, omissions, change in price, prior sale, withdrawal without notice, or other conditions.

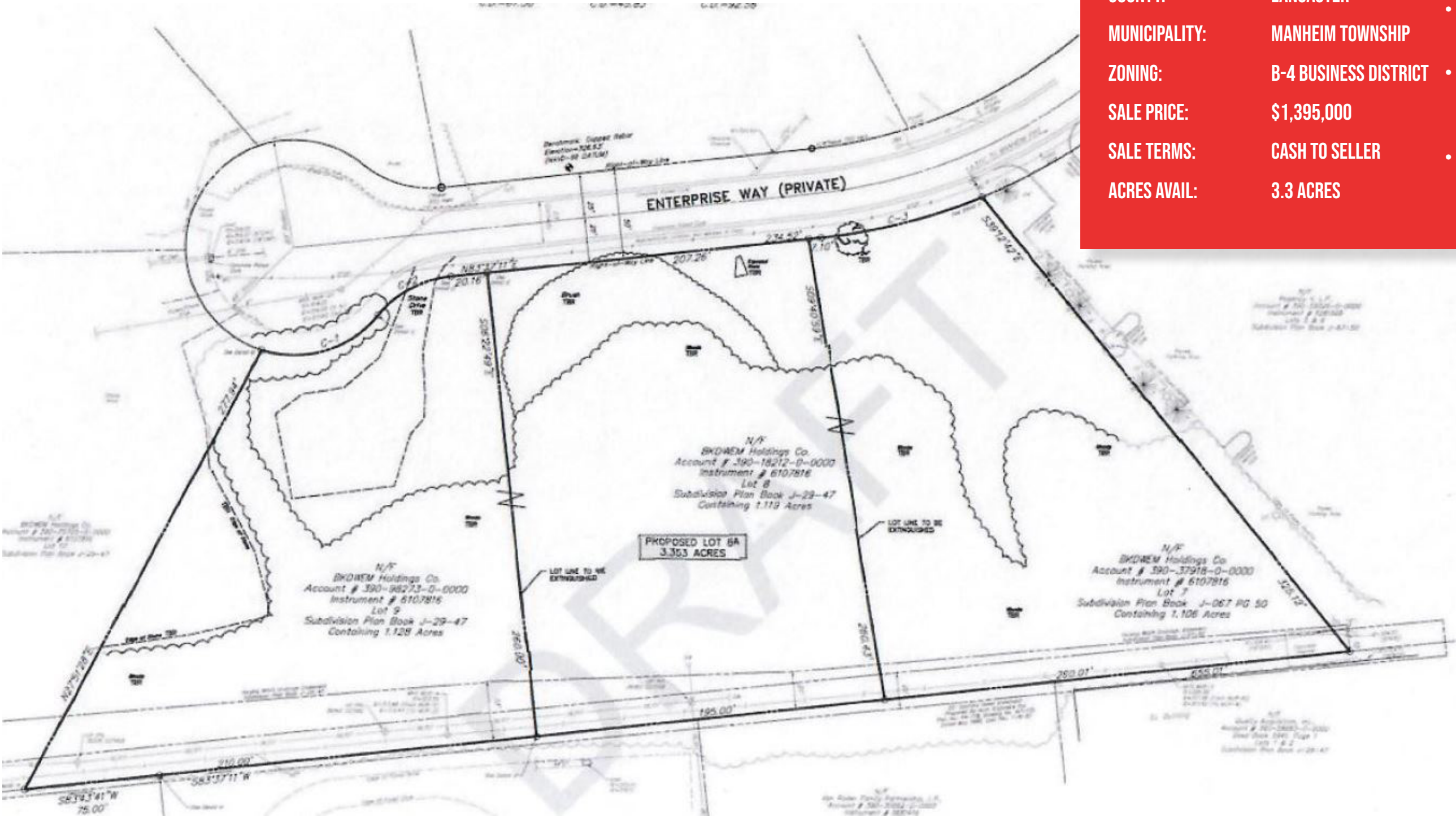
ENTERPRISE WAY

Lancaster, PA | 17601

PROPERTY SUMMARY

COUNTY: LANCASTER
MUNICIPALITY: MANHEIM TOWNSHIP
ZONING: B-4 BUSINESS DISTRICT
SALE PRICE: \$1,395,000
SALE TERMS: CASH TO SELLER
ACRES AVAILABLE: 3.3 ACRES

- 3.3 ACRES ZONED B-4 IN MANHEIM TOWNSHIP
- ZONING PERMITS A VARIETY OF USES INCLUDING OFFICE, RETAIL, AND HOSPITALITY
- PROPERTY IS SITUATED JUST OFF OF MANHEIM PIKE AND MINUTES AWAY FROM ROUTE 283 AND ROUTE 30
- MANY HIGH PROFILE RETAIL DESTINATIONS NEARBY INCLUDING PARK CITY MALL, RED ROSE COMMONS, SHOPPES AT BELMONT, THE CROSSINGS, AND MORE



York Office: 3528 Concord Rd. York, PA 17402
Exton Office: 1 East Uwchlan Avenue, Suite 409, Exton, PA 19341
Lancaster Office: 150 Farmington Lane, Suite 201, Lancaster, PA 17601

JEFF HERR | JEFFREY HERR
717-843-5555
www.bennettwilliams.com



Lancaster, PA | 17601



JEFF HERR | JEFFREY HERR
717-843-5555
www.bennettwilliams.com

Bennett WILLIAMS
COMMERCIAL

Information shown is purported to be from reliable sources. No representation is made to the accuracy thereof, and is submitted subject to errors, omissions, change in price, prior sale, withdrawal without notice, or other conditions.