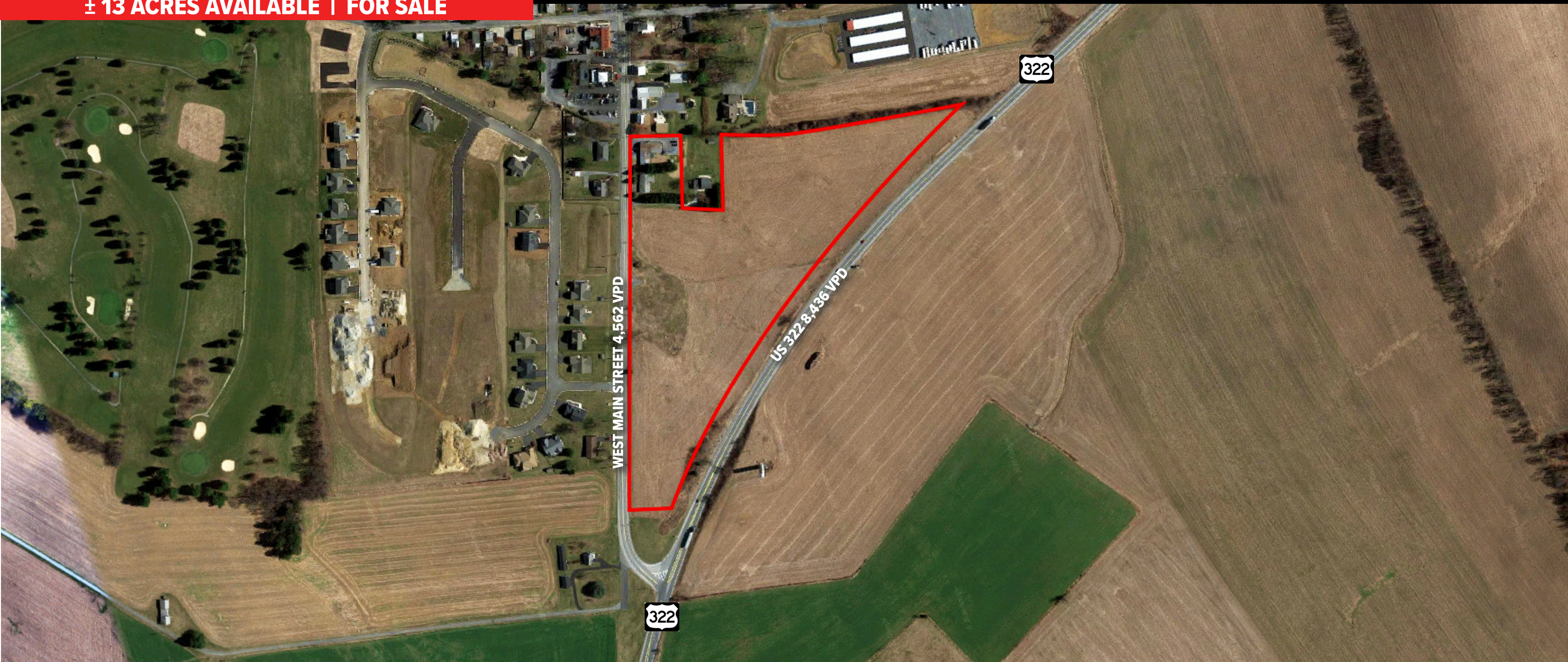


419/322 HORSESHOE PIKE

Quentin, PA | 17042

± 13 ACRES AVAILABLE | FOR SALE



PROPERTY OVERVIEW

Great Opportunity for Residential Development of 13 +/- Acres along two major highways in and out of Lebanon County situated on the corner of State Route 419/East Main Street and US State Route 322/ Horseshoe Pike located in Annville. Permitted uses include by not limited too; single family homes, townhouses, garden townhouses, parks, and more. Please see documents for permitted uses and a list of special exception uses. Zone R-2.

ACTIVE MEMBER OF:
RETAIL BROKERS
NETWORK

York Office: 3528 Concord Rd. York, PA 17402
Exton Office: 1 East Uwchlan Avenue, Suite 409, Exton, PA 19341
Lancaster Office: 150 Farmington Lane, Suite 201, Lancaster, PA 17601

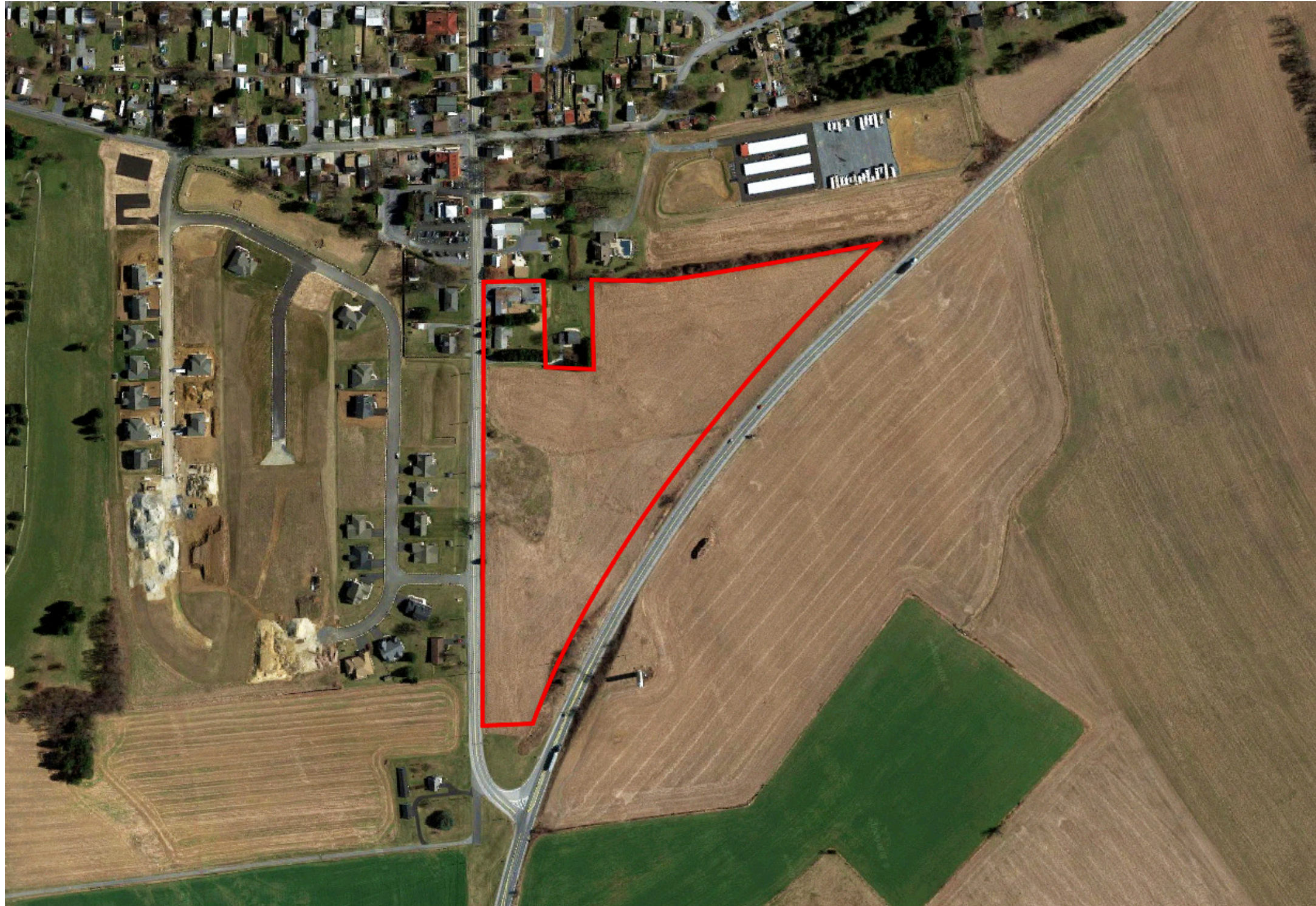
TOM TROCCOLI
717-390-9858
www.bennettwilliams.com

Bennett Williams
COMMERCIAL

Information shown is purported to be from reliable sources. No representation is made to the accuracy thereof, and is submitted subject to errors, omissions, change in price, prior sale, withdrawal without notice, or other conditions.

419/322 HORSESHOE PIKE

Quentin, PA | 17042



POPULATION

122,284



EMPLOYEES

47,640



HH INCOME

\$76,355



HOUSEHOLDS

48,235



TRAFFIC COUNTS

US 322
8,436 VPD

20 MINUTE DRIVE TIME DEMOGRAPHICS



York Office: 3528 Concord Rd. York, PA 17402
Exton Office: 1 East Uwchlan Avenue, Suite 409, Exton, PA 19341
Lancaster Office: 150 Farmington Lane, Suite 201, Lancaster, PA 17601

TOM TROCCOLI
717-390-9858
www.bennettwilliams.com



Information shown is purported to be from reliable sources. No representation is made to the accuracy thereof, and is submitted subject to errors, omissions, change in price, prior sale, withdrawal without notice, or other conditions.

419/322 HORSESHOE PIKE

Quentin, PA | 17042



ACTIVE MEMBER OF:
RETAIL BROKERS
NETWORK

York Office: 3528 Concord Rd. York, PA 17402
Exton Office: 1 East Uwchlan Avenue, Suite 409, Exton, PA 19341
Lancaster Office: 150 Farmington Lane, Suite 201, Lancaster, PA 17601

TOM TROCCOLI
717-390-9858
www.bennettwilliams.com

Bennett WILLIAMS
COMMERCIAL

Information shown is purported to be from reliable sources. No representation is made to the accuracy thereof, and is submitted subject to errors, omissions, change in price, prior sale, withdrawal without notice, or other conditions.