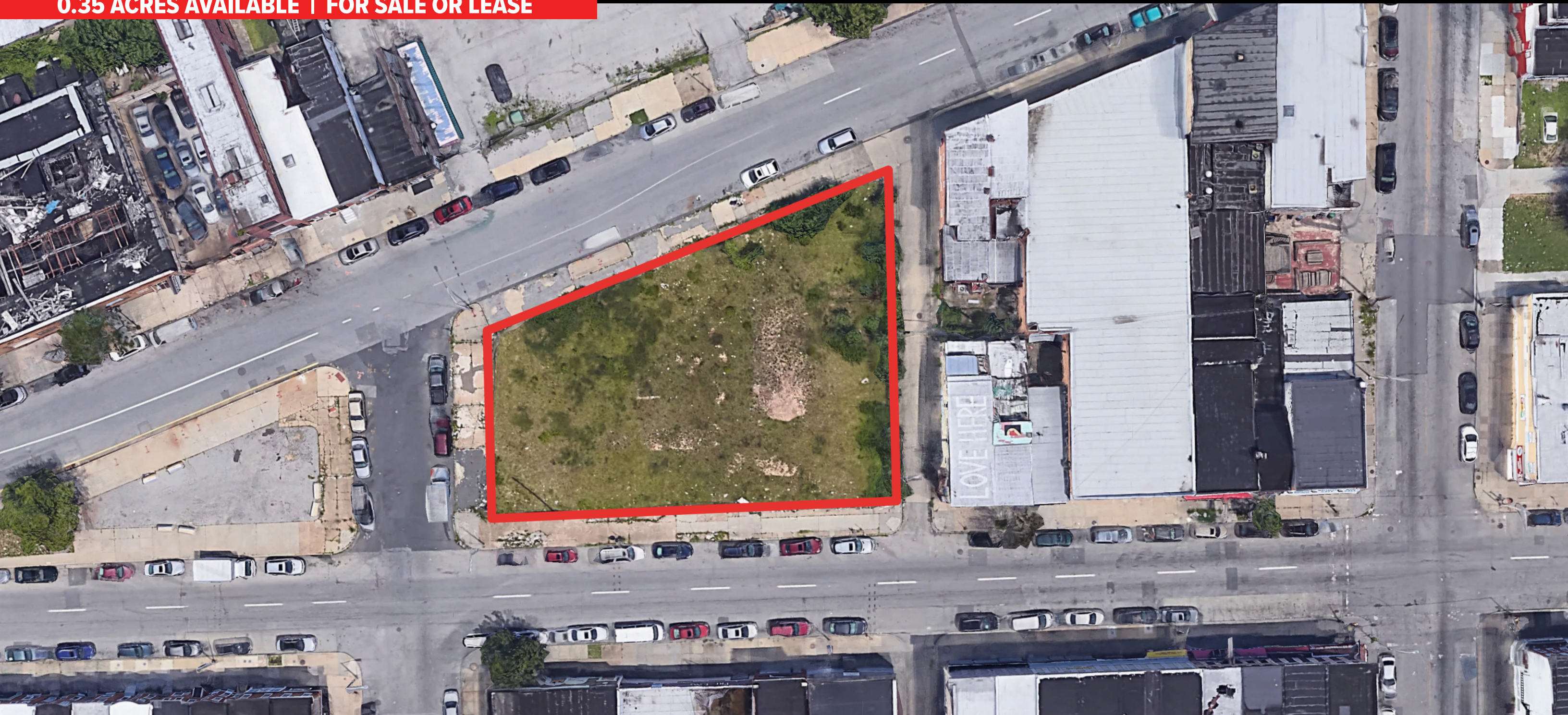


2128 W. PRATT STREET

Baltimore, MD | 21223

0.35 ACRES AVAILABLE | FOR SALE OR LEASE



PROPERTY OVERVIEW

Extremely dense population (221,000 in 3 miles) with minimal competition. Shovel ready for anyone who wants to build a gas station in accordance with the plan that was approved in 2019.



York Office: 3528 Concord Rd. York, PA 17402
Exton Office: 1 East Uwchlan Avenue, Suite 409, Exton, PA 19341
Lancaster Office: 150 Farmington Lane, Suite 201, Lancaster, PA 17601

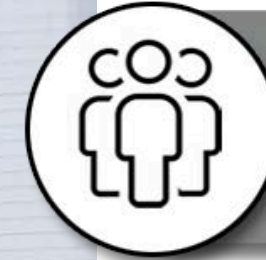
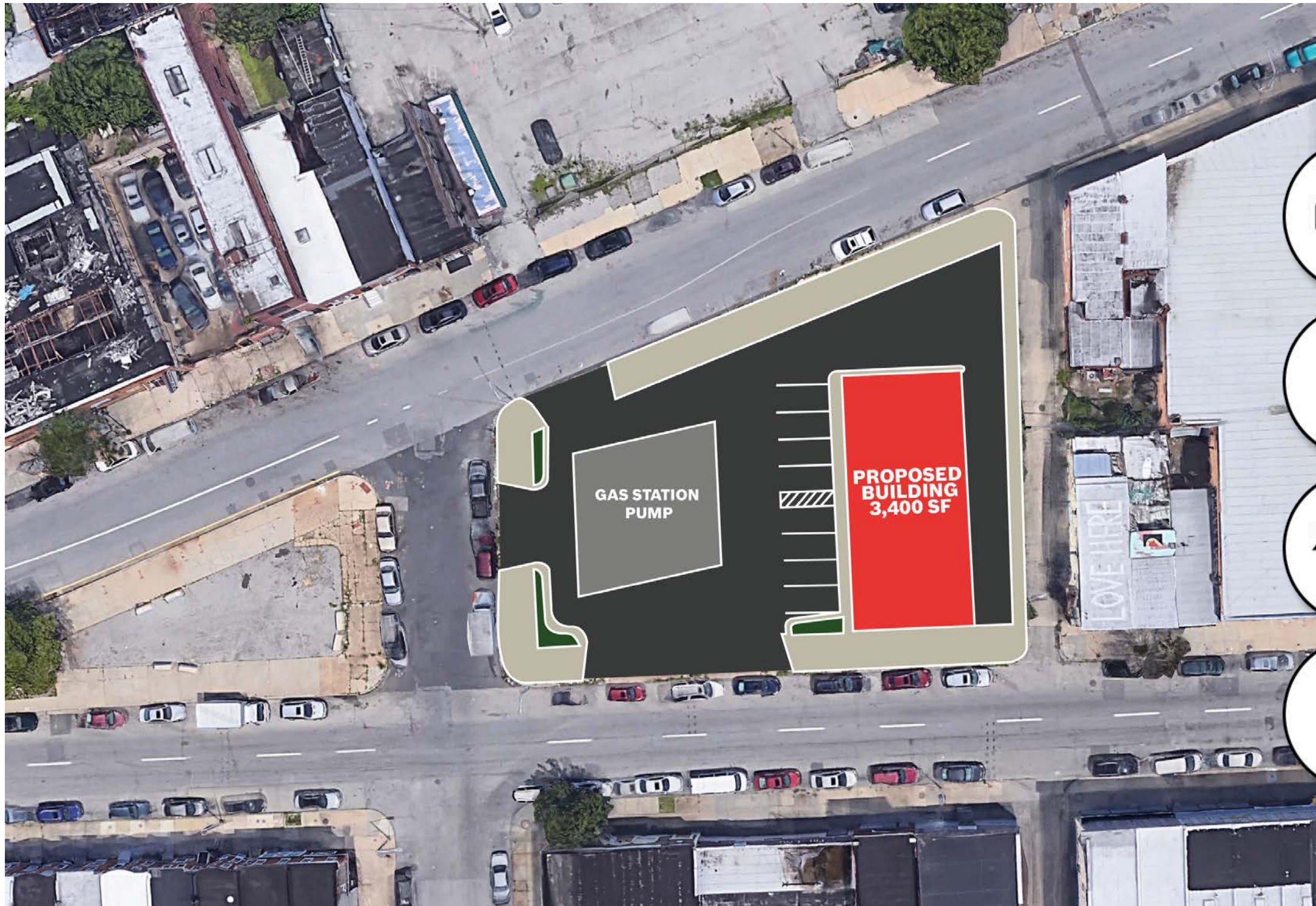
ANTHONY CURCIO
610-321-1111
www.bennettwilliams.com



Information shown is purported to be from reliable sources. No representation is made to the accuracy thereof, and is submitted subject to errors, omissions, change in price, prior sale, withdrawal without notice, or other conditions.

2128 W. PRATT STREET

Baltimore, MD | 21223



POPULATION

693,325



EMPLOYEES

418,149



HH INCOME

\$86,086



HOUSEHOLDS

275,777

20 MINUTE DRIVE TIME DEMOGRAPHICS

ACTIVE MEMBER OF:
RETAIL BROKERS
NETWORK

York Office: 3528 Concord Rd. York, PA 17402
Exton Office: 1 East Uwchlan Avenue, Suite 409, Exton, PA 19341
Lancaster Office: 150 Farmington Lane, Suite 201, Lancaster, PA 17601

ANTHONY CURCIO
610-321-1111
www.bennettwilliams.com

Bennett Williams
COMMERCIAL

Information shown is purported to be from reliable sources. No representation is made to the accuracy thereof, and is submitted subject to errors, omissions, change in price, prior sale, withdrawal without notice, or other conditions.

2128 W. PRATT STREET

Baltimore, MD | 21223



ACTIVE MEMBER OF:
RETAIL BROKERS
NETWORK

York Office: 3528 Concord Rd. York, PA 17402
Exton Office: 1 East Uwchlan Avenue, Suite 409, Exton, PA 19341
Lancaster Office: 150 Farmington Lane, Suite 201, Lancaster, PA 17601

ANTHONY CURCIO
610-321-1111
www.bennettwilliams.com

Bennett WILLIAMS
COMMERCIAL

Information shown is purported to be from reliable sources. No representation is made to the accuracy thereof, and is submitted subject to errors, omissions, change in price, prior sale, withdrawal without notice, or other conditions.