

628-666 E. Baltimore St | Greencastle, PA 17225

2.02 Acres of Land Available

Available For Sale

Property Overview

Four contiguous commercial parcels located at the interchange of interstate 81, E. Baltimore Street & Buchanan Trail E. Adjacent to Auto Zone. Zoned Community Commercial which allows for many permitted uses by right.

DEMOGRAPHICS	1 MILE	3 MILE	5 MILE
TOTAL POPULATION	4,169	10,418	20,930
TOTAL EMPLOYEES	1,840	5,029	6,718
AVERAGE HHI	\$78,850	\$85,485	\$85,925
TOTAL HOUSEHOLDS	1,812	4,158	8,129
TRAFFIC COUNTS: I-81 - ±81,000 VPD			

Property Highlights

- Conveniently located off Exit 5 of I-81
- Zoned Community Commercial
- Great Location for Retail, Fast Food, C-Store, Auto Repair, Professional Office
- 81,000 cars per day on I-81
- Greencastle is a Fast Growing Market Located Between Hagerstown & Chambersburg
- Antrim Township
- Baltimore Street/Buchanan Trail is a Main Traffic artery



BLAKE GROSS | KEITH KAHLBAUGH
717.843.5555
www.bennettwilliams.com

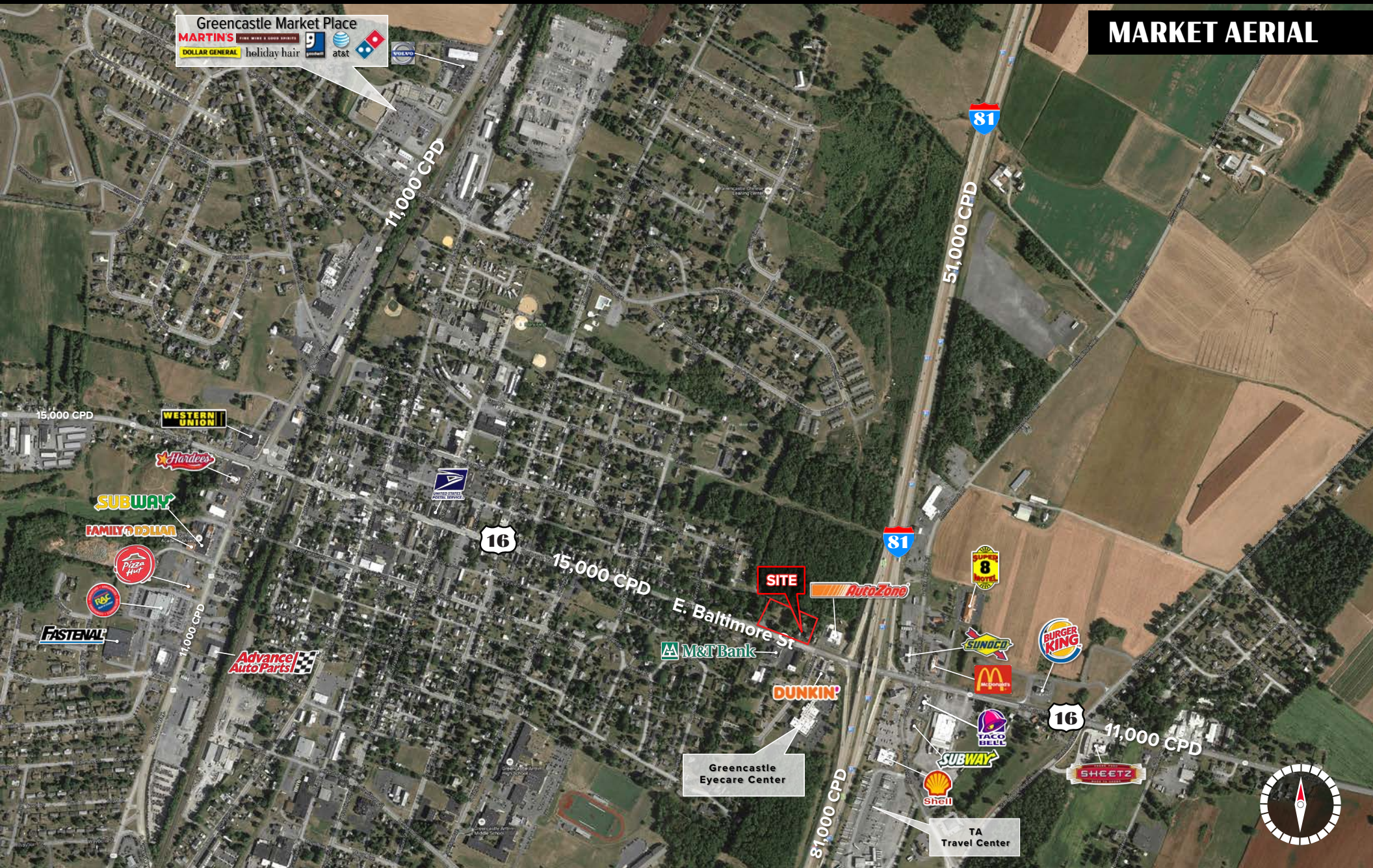
York Office: 3528 Concord Rd. York, PA 17402
Exton Office: 1 East Uwchlan Avenue, Suite 409, Exton, PA 19341
Lancaster Office: 150 Farmington Lane, Suite 201, Lancaster, PA 17601

Bennett WILLIAMS
RETAIL

ACTIVE MEMBER OF:
RETAIL BROKERS
NETWORK

Available For Sale

MARKET AERIAL



York Office: 3528 Concord Rd. York, PA 17402
Exton Office: 1 East Uwchlan Avenue, Suite 409, Exton, PA 19341
Lancaster Office: 150 Farmington Lane, Suite 201, Lancaster, PA 17601

Bennett WILLIAMS
RETAIL

ACTIVE MEMBER OF:
 **RETAIL** BROKERS
NETWORK