

777 Cherry Tree Court | Hanover, PA 17331

± 5,858 SF Medical Space Available

Available For Sale

Property Overview

777 Cherry Tree Court is located in a medical complex with several other buildings. The property has 5,858 SF of finished first floor space built for medical use and an unfinished basement of 3,790 SF. The finish out includes 10+ exam rooms, several private offices, a large reception area with lobby, multiple restrooms, and a large room used for chemo treatment. The floor is concrete with vinyl and carpet floor coverings. There are three first floor entrances; the main entrance has a automatic sliding door, a side entrance for ambulance drop-off and delivery, and a third standard door entry. The building is in excellent condition.

DEMOGRAPHICS	1 MILE	3 MILE	5 MILE
TOTAL POPULATION	4,879	36,143	59,225
TOTAL EMPLOYEES	8,422	23,619	27,469
AVERAGE HHI	\$81,545	\$77,149	\$80,240
TOTAL HOUSEHOLDS	2,219	15,386	24,369



RYAN MYERS
717.843.5555
www.bennettwilliams.com

York Office: 3528 Concord Rd. York, PA 17402
Exton Office: 1 East Uwchlan Avenue, Suite 409, Exton, PA 19341
Lancaster Office: 150 Farmington Lane, Suite 201, Lancaster, PA 17601

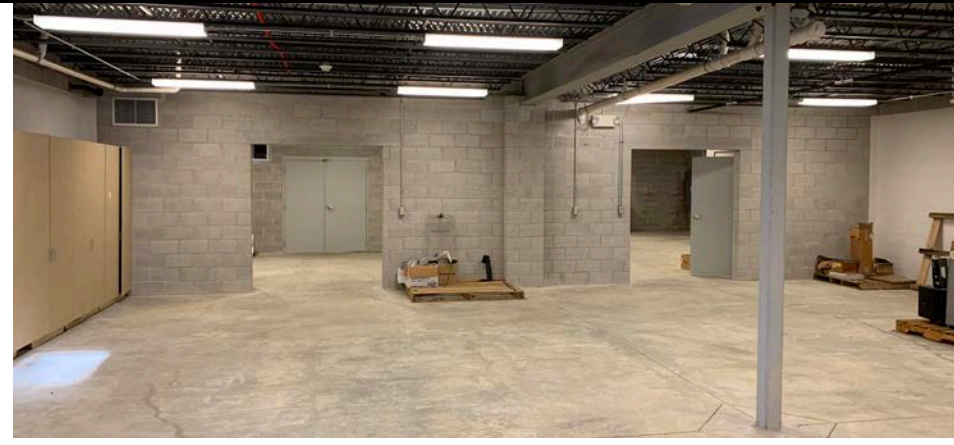
Bennett WILLIAMS
COMMERCIAL

ACTIVE MEMBER OF:
RETAIL BROKERS
NETWORK

777 Cherry Tree Court | Hanover, PA 17331

± 5,858 SF Medical Space Available

Available For Sale



RYAN MYERS
717.843.5555
www.bennettwilliams.com

York Office: 3528 Concord Rd. York, PA 17402
Exton Office: 1 East Uwchlan Avenue, Suite 409, Exton, PA 19341
Lancaster Office: 150 Farmington Lane, Suite 201, Lancaster, PA 17601

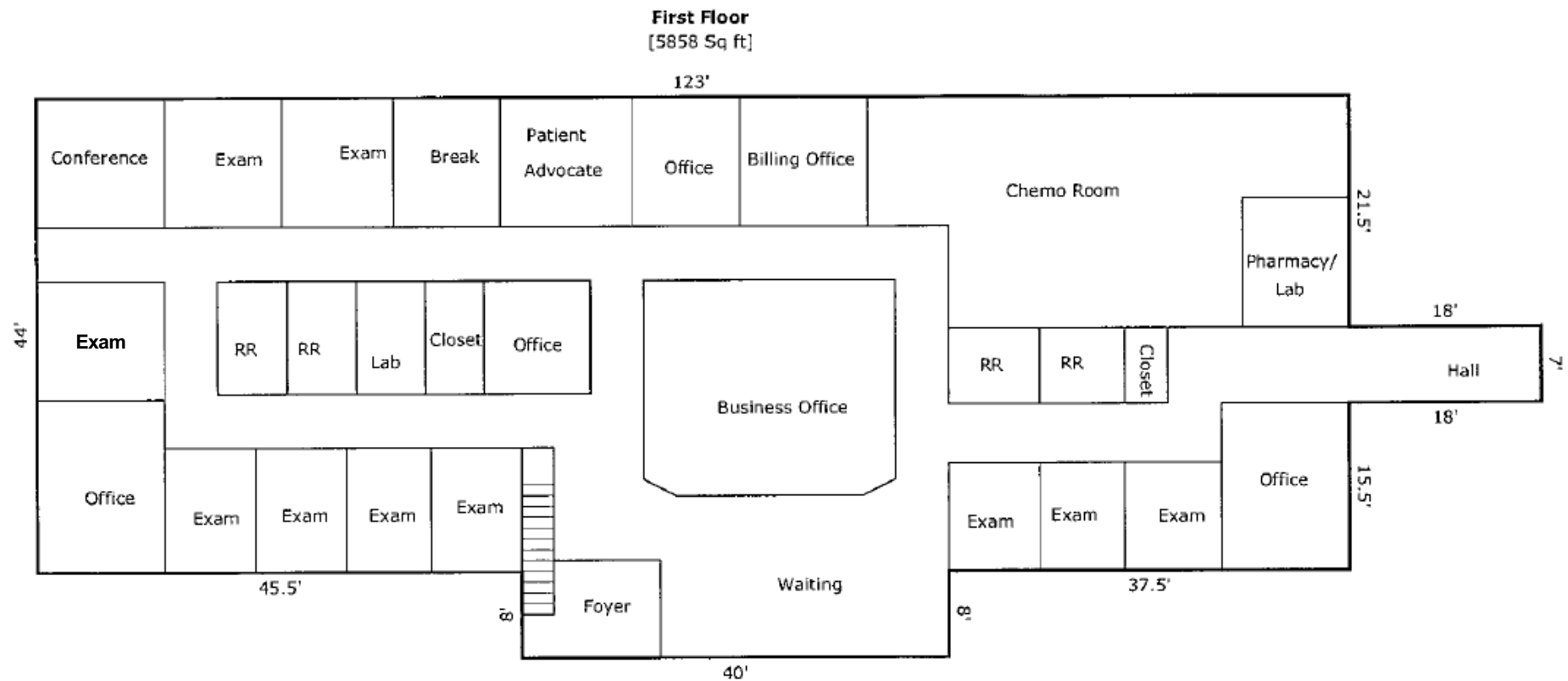
Bennett WILLIAMS
COMMERCIAL

ACTIVE MEMBER OF:
RETAIL BROKERS
NETWORK

777 Cherry Tree Court | Hanover, PA 17331

± 5,858 SF Medical Space Available

Available For Sale



777 Cherry Tree Court | Hanover, PA 17331

± 5,858 SF Medical Space Available

Available For Sale

MARKET AERIAL



AGENT NAME | AGENT NAME | AGENT NAME
717.843.5555
www.bennettwilliams.com

York Office: 3528 Concord Rd. York, PA 17402
Exton Office: 1 East Uwchlan Avenue, Suite 409, Exton, PA 19341
Lancaster Office: 150 Farmington Lane, Suite 201, Lancaster, PA 17601

Bennett WILLIAMS
COMMERCIAL

ACTIVE MEMBER OF:
RETAIL BROKERS
NETWORK