

4910 FAIRFIELD ROAD

Fairfield, PA

± 2,354 SF AVAILABLE | FOR LEASE



PROPERTY OVERVIEW

Former 2,354 SF 7-Eleven available for sublease.

ACTIVE MEMBER OF:
RETAIL BROKERS
NETWORK

York Office: 3528 Concord Rd. York, PA 17402
Exton Office: 1 East Uwchlan Avenue, Suite 409, Exton, PA 19341
Lancaster Office: 150 Farmington Lane, Suite 201, Lancaster, PA 17601

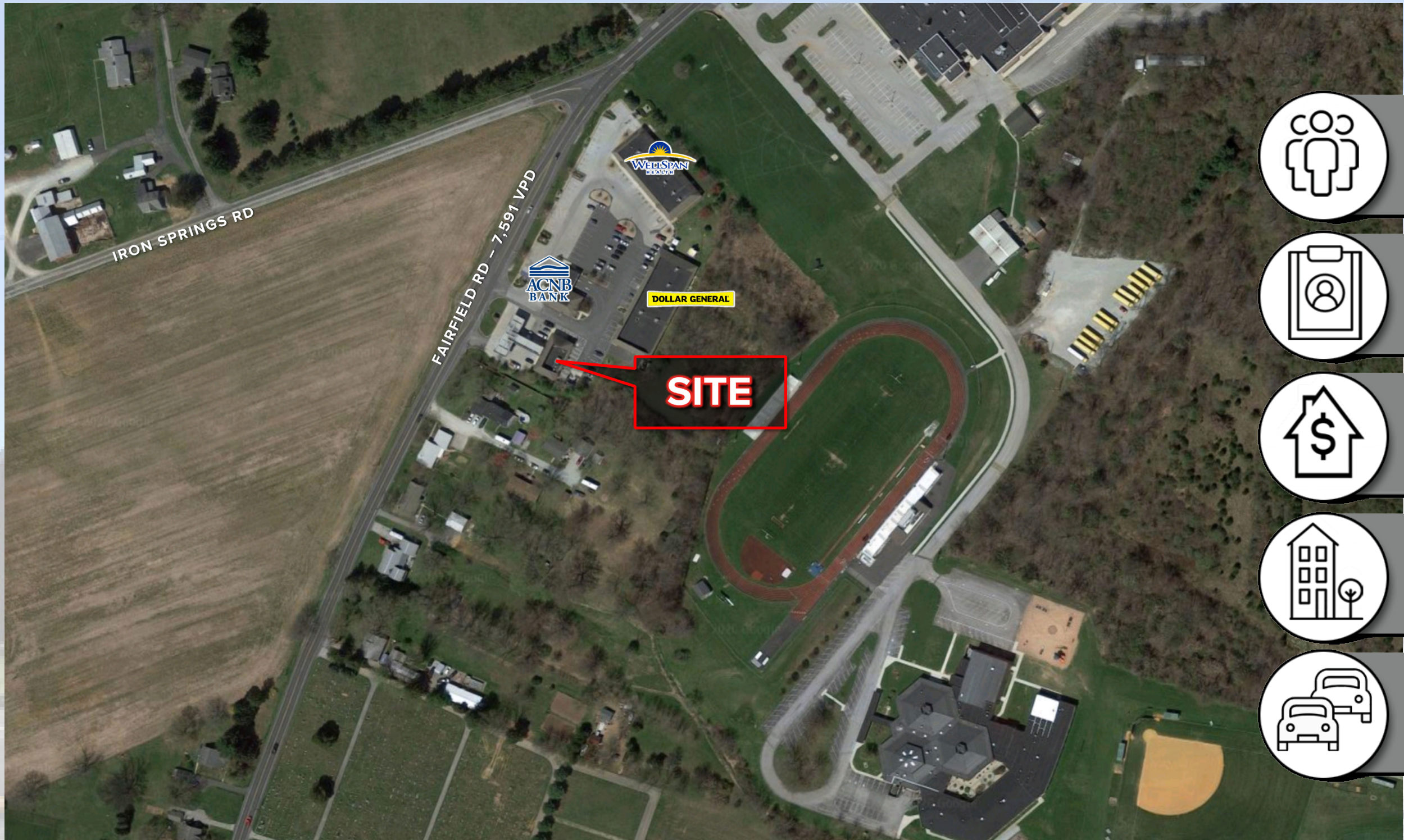
GARY RUSSELL
717-843-5555
www.bennettwilliams.com

Bennett WILLIAMS
COMMERCIAL

Information shown is purported to be from reliable sources. No representation is made to the accuracy thereof, and is submitted subject to errors, omissions, change in price, prior sale, withdrawal without notice, or other conditions.

4910 FAIRFIELD ROAD

Fairfield, PA



POPULATION
43,886



EMPLOYEES
37,169



HH INCOME
\$83,967



HOUSEHOLDS
16,821



TRAFFIC COUNTS
Fairfield Rd.
7,591 VPD

20 MINUTE DRIVE TIME DEMOGRAPHICS

ACTIVE MEMBER OF:
RETAIL BROKERS
NETWORK

York Office: 3528 Concord Rd. York, PA 17402
Exton Office: 1 East Uwchlan Avenue, Suite 409, Exton, PA 19341
Lancaster Office: 150 Farmington Lane, Suite 201, Lancaster, PA 17601

GARY RUSSELL
717-843-5555
www.bennettwilliams.com

Bennett WILLIAMS
COMMERCIAL

Information shown is purported to be from reliable sources. No representation is made to the accuracy thereof, and is submitted subject to errors, omissions, change in price, prior sale, withdrawal without notice, or other conditions.