



JONESTOWN ROAD CENTER

4907-19 Jonestown Road | Harrisburg, PA 17109

For Lease



PROPERTY OVERVIEW

±2,650 SF AVAILABLE

Jonestown Road Center is a ± 24,168 SF neighborhood strip center located on the east shore of Harrisburg, Pennsylvania, directly on U.S. Route 22 (Jonestown Road), which sees over ± 33,000 vehicles per day. The center is located in Harrisburg's densest retail corridors and home to retailers such as Budget Blinds, Sherwin Williams, Fisher Auto Parts & Cosmo Prof. Surrounding retailers also include Target, Costco, Kohl's, Dick's Sporting Goods, Marshalls, CVS, HomeGoods, Aldi, Best Buy, Old Navy, Home Depot, Rite Aid and more.

BRAD ROHRBAUGH | CHAD STINE
BLAKE SHAFFER | ASHLEE LEHMAN
717.843.5555 | www.bennettwilliams.com

York Office: 3528 Concord Rd. York, PA 17402
Exton Office: 1 East Uwchlan Avenue, Suite 409, Exton, PA 19341
Lancaster Office: 150 Farmington Lane, Suite 201, Lancaster, PA 17601

Bennett WILLIAMS
RETAIL

ACTIVE MEMBER OF:
RETAIL BROKERS
NETWORK



JONESTOWN ROAD CENTER

4907-19 Jonestown Road | Harrisburg, PA 17109

Available For Lease

MAP LOCATION



DEMOGRAPHICS

	3 MILE	5 MILE	7 MILE
TOTAL POPULATION	7,303	63,056	143,750
TOTAL EMPLOYEES	7,313	35,479	90,023
AVERAGE HHI	\$88,121	\$87,848	\$81,958
TOTAL HOUSEHOLDS	3,129	27,376	59,482
TRAFFIC COUNTS: Jonestown Road (US 22) - 33,000 VPD 22			

Paxton Towne Center

PROPERTY OVERVIEW



BRAD ROHRBAUGH | CHAD STINE
BLAKE SHAFFER | ASHLEE LEHMAN
717.843.5555 | www.bennettwilliams.com

York Office: 3528 Concord Rd. York, PA 17402
Exton Office: 1 East Uwchlan Avenue, Suite 409, Exton, PA 19341
Lancaster Office: 150 Farmington Lane, Suite 201, Lancaster, PA 17601

Bennett WILLIAMS
RETAIL

ACTIVE MEMBER OF:
RETAIL BROKERS
NETWORK

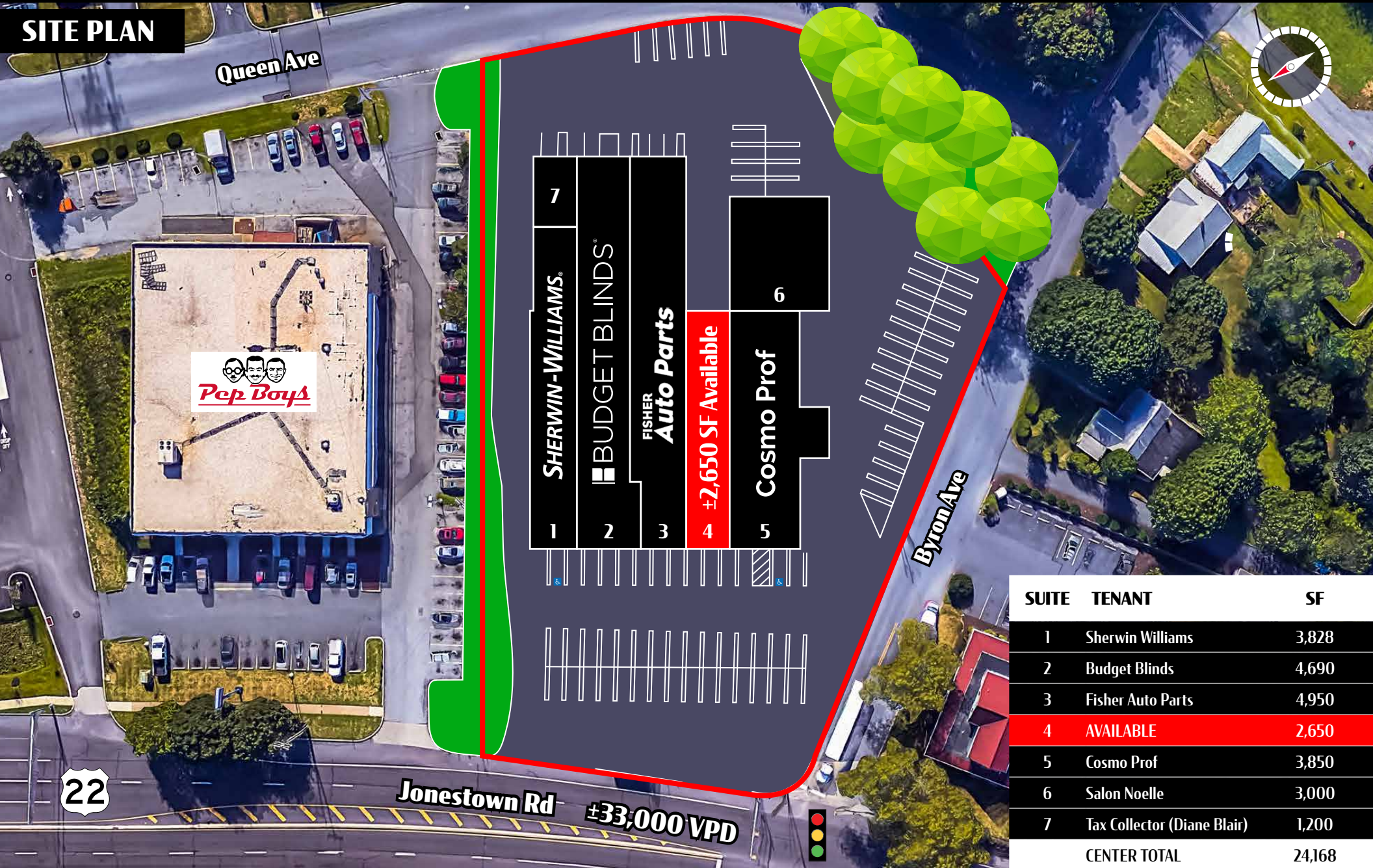


JONESTOWN ROAD CENTER

4907-19 Jonestown Road | Harrisburg, PA 17109

Available For Lease

SITE PLAN



SUITE	TENANT	SF
1	Sherwin Williams	3,828
2	Budget Blinds	4,690
3	Fisher Auto Parts	4,950
4	AVAILABLE	2,650
5	Cosmo Prof	3,850
6	Salon Noelle	3,000
7	Tax Collector (Diane Blair)	1,200
CENTER TOTAL		24,168

BRAD ROHRBAUGH | CHAD STINE
BLAKE SHAFFER | ASHLEE LEHMAN
717.843.5555 | www.bennettwilliams.com

York Office: 3528 Concord Rd. York, PA 17402
Exton Office: 1 East Uwchlan Avenue, Suite 409, Exton, PA 19341
Lancaster Office: 150 Farmington Lane, Suite 201, Lancaster, PA 17601

Bennett WILLIAMS
RETAIL

ACTIVE MEMBER OF:
RETAIL BROKERS
NETWORK

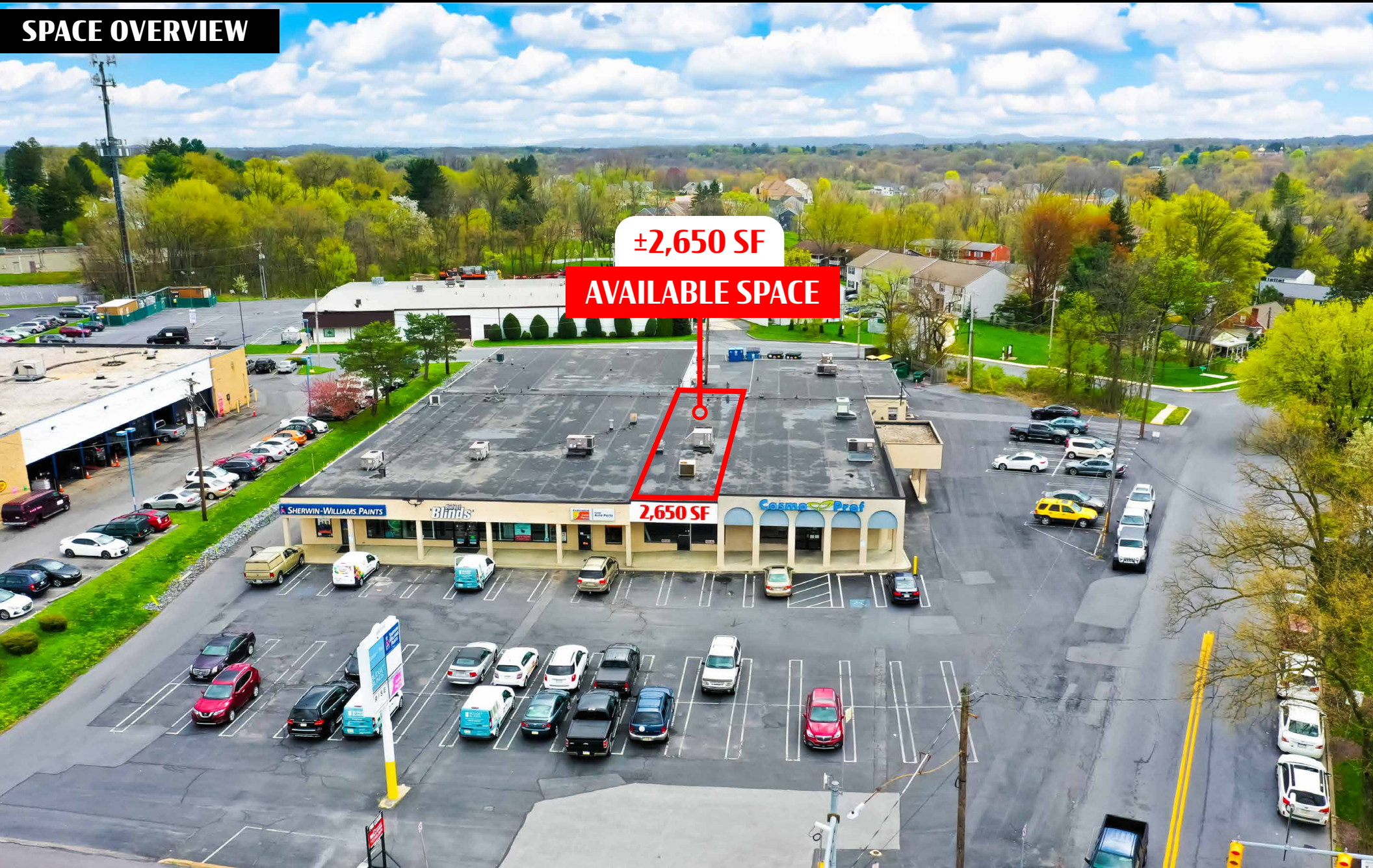


JONESTOWN ROAD CENTER

4907-19 Jonestown Road | Harrisburg, PA 17109

Available For Lease

SPACE OVERVIEW



BRAD ROHRBAUGH | CHAD STINE
BLAKE SHAFFER | ASHLEE LEHMAN
717.843.5555 | www.bennettwilliams.com

York Office: 3528 Concord Rd. York, PA 17402
Exton Office: 1 East Uwchlan Avenue, Suite 409, Exton, PA 19341
Lancaster Office: 150 Farmington Lane, Suite 201, Lancaster, PA 17601

Bennett WILLIAMS
RETAIL

ACTIVE MEMBER OF:
RETAIL BROKERS
NETWORK

JRC JONESTOWN ROAD CENTER

4907-19 Jonestown Road | Harrisburg, PA 17109

Available For Lease

MARKET AERIAL

Shoppes At Susquehanna Marketplace



Colonial Commons



Colonial Park Mall



JONESTOWN ROAD CENTER



Style and service for every budget.

84,000 VPD

22

Paxton Square



Paxton Towne Center



Harrisburg East SC



BRAD ROHRBAUGH | CHAD STINE
BLAKE SHAFFER | ASHLEE LEHMAN
717.843.5555 | www.bennettwilliams.com

York Office: 3528 Concord Rd. York, PA 17402
Exton Office: 1 East Uwchlan Avenue, Suite 409, Exton, PA 19341
Lancaster Office: 150 Farmington Lane, Suite 201, Lancaster, PA 17601

Bennett WILLIAMS
RETAIL

ACTIVE MEMBER OF:
RETAIL BROKERS
NETWORK