

± 5,000 - 18,564 SF

Call's Plaza

FOR SUBLEASE

1700 Wilmington Road | New Castle, PA 16105



**AVAILABLE
SPACE CAN BE DIVIDED
±18,564 SF**

Overview

1700 Wilmington Road, New Castle, PA provides an excellent opportunity to join Call's Plaza in the former Bottom Dollar anchor position. Call's Plaza sits in the heart of the New Castle retail corridor and features national retailers such as Rite Aid, Dairy Queen, KFC, Dollar General and more. In addition, UPMC Jameson sits a mile away from Call's Plaza resulting in heavy traffic along Route 18. The space offers a sublease from Aldi that runs until April 30th, 2033 and is fitted for a variety of uses, including but not limited to retail, medical, and service-oriented users.

Nearby: 









ADAM HAGERMAN | CALE BRUSO
BRAD ROHRBAUGH | CHAD STINE
717.843.5555
www.bennettwilliams.com

York Office: 3528 Concord Rd. York, PA 17402
Exton Office: 1 East Uwchlan Avenue, Suite 409, Exton, PA 19341
Lancaster Office: 150 Farmington Lane, Suite 201, Lancaster, PA 17601

Bennett WILLIAMS
RETAIL

ACTIVE MEMBER OF:
RETAIL BROKERS
NETWORK

Call's Plaza

1700 Wilmington Road | New Castle, PA 16105

Available For Sublease

Location

1700 Wilmington Road serves as the main traffic throughfare in the town of New Castle and has excellent visibility from Route 18 ($\pm 13,000$ VPD) with convenient proximity to Route 422 ($\pm 5,000$ VPD) and Interstate 376 which leads directly into Pittsburgh.

Trade Area

Adding to the stability of this center, the site shows a 15 minute drive time demographic of over 54,389 people with household incomes more than \$76,663 and daytime demographics equally as strong with 22,345. The demographics within a 10-mile radius include 75,229 people in 31,262 homes, a labor force of 25,168 with an average household income of 78,807. The area has seen a growth of 7% since 2000 with over 2,498 new homes.



±18,564 SF

DEMOGRAPHICS	3 MILE	5 MILE	7 MILE
TOTAL POPULATION	34,770	45,694	56,091
TOTAL EMPLOYEES	13,687	19,792	20,866
AVERAGE HHI	\$71,087	\$74,276	\$76,735
TOTAL HOUSEHOLDS	15,125	19,822	23,799

TRAFFIC COUNTS: **Wilmington Road** - $\pm 17,000$ VPD

ADAM HAGERMAN | CALE BRUSO
BRAD ROHRBAUGH | CHAD STINE
717.843.5555
www.bennettwilliams.com

York Office: 3528 Concord Rd. York, PA 17402
Exton Office: 1 East Uwchlan Avenue, Suite 409, Exton, PA 19341
Lancaster Office: 150 Farmington Lane, Suite 201, Lancaster, PA 17601

Bennett WILLIAMS
RETAIL

ACTIVE MEMBER OF:
RETAIL BROKERS NETWORK

Call's Plaza

1700 Wilmington Road | New Castle, PA 16105

Available For Sublease

SITE PLAN



SUITE	TENANT	SF
1	Family 1st Credit Union	
2	Shear Perfection	
3	Berkshire Hathaway Real Estate	
4	Vacant	
5	North Hills Antiques	
6	Bost Financial	
7	Social Security Office	
8	True Value	
9	Family Dollar	
10	AVAILABLE	18,564

ADAM HAGERMAN | CALE BRUSO
 BRAD ROHRBAUGH | CHAD STINE
 717.843.5555
 www.bennettwilliams.com

York Office: 3528 Concord Rd. York, PA 17402
 Exton Office: 1 East Uwchlan Avenue, Suite 409, Exton, PA 19341
 Lancaster Office: 150 Farmington Lane, Suite 201, Lancaster, PA 17601

Bennett WILLIAMS
 RETAIL

ACTIVE MEMBER OF:
 RETAIL BROKERS NETWORK

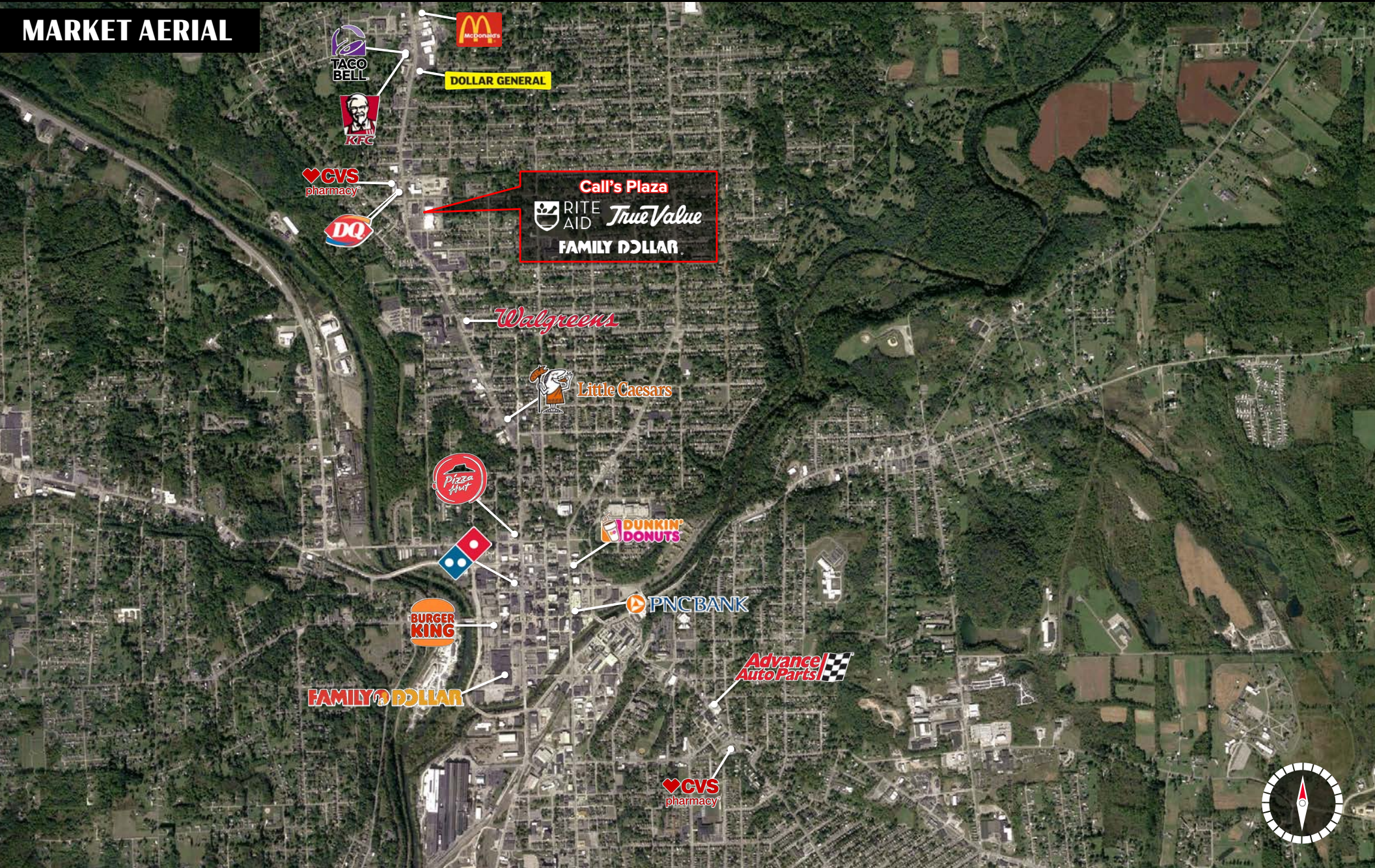


Call's Plaza

1700 Wilmington Road | New Castle, PA 16105

Available For Sublease

MARKET AERIAL



ADAM HAGERMAN | CALE BRUSO
BRAD ROHRBAUGH | CHAD STINE
717.843.5555
www.bennettwilliams.com

York Office: 3528 Concord Rd. York, PA 17402
Exton Office: 1 East Uwchlan Avenue, Suite 409, Exton, PA 19341
Lancaster Office: 150 Farmington Lane, Suite 201, Lancaster, PA 17601

Bennett WILLIAMS
RETAIL

ACTIVE MEMBER OF:
RETAIL BROKERS NETWORK