

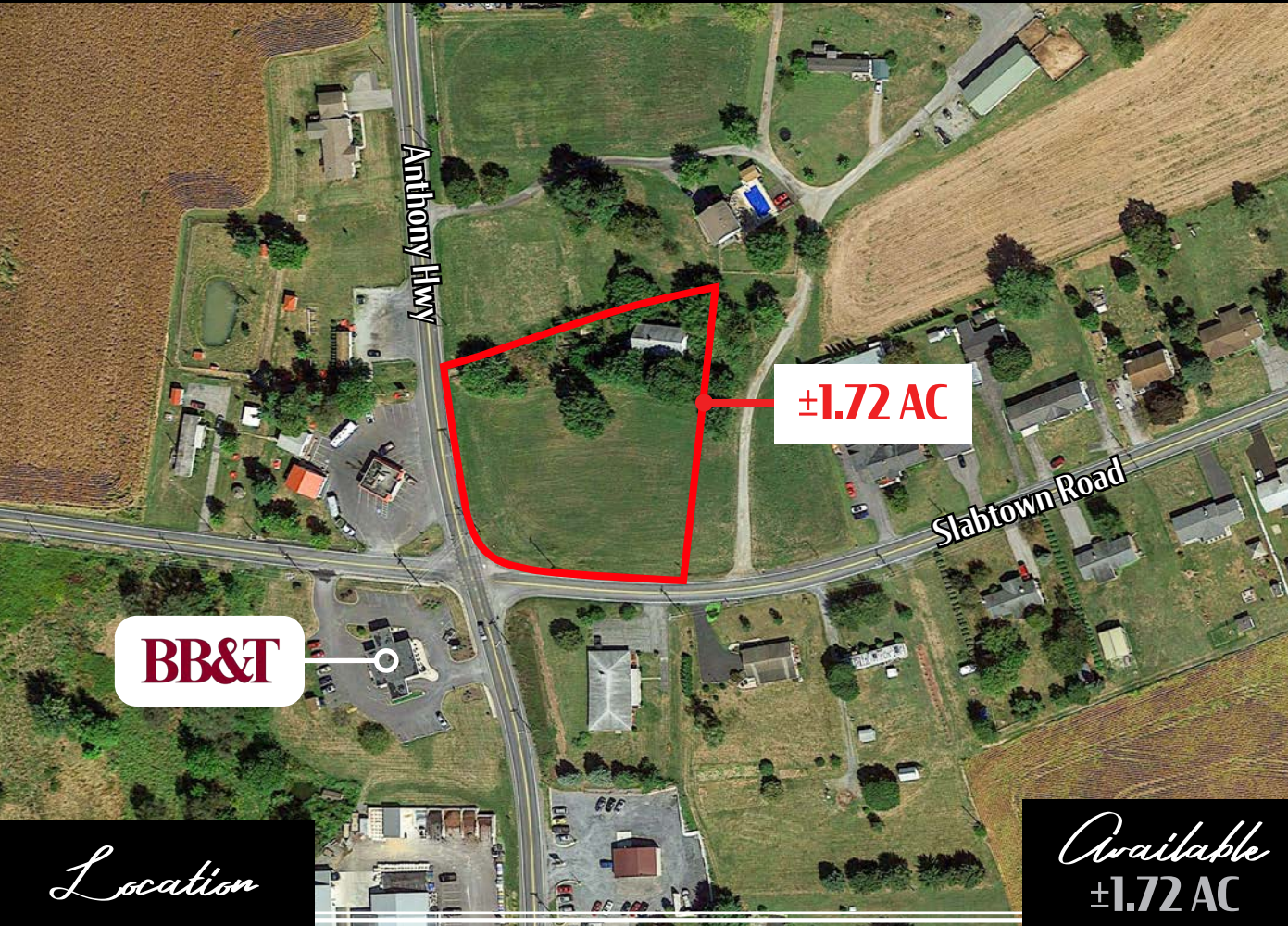
7330 Anthony Highway

Waynesboro, PA 17268

Available For Sale

Property Overview

The property is 1.72 acres of commercial/industrial zoned land. The land is clear and slightly sloped. Some permitted Uses include: Animal Hospital, House of Worship, Self Storage, Manufacturing, Warehouse, Retail Business, Townhouse, and Multi-Family. The list price is \$275,000 with a fuel restriction, or \$375,000 without a restriction.



Location

The property is located at the northeast corner of the intersection of Anthony Highway and Slabtown Road. The property is located in Quincy Township, Franklin County. Nearby uses include PennState Mont Alto campus, Dollar General, Rutters, Twin Kiss, Mowery Elementary School.

Available
±1.72 AC

DEMOGRAPHICS	3 MILE	5 MILE	7 MILE
TOTAL POPULATION	6,336	25,216	47,264
TOTAL EMPLOYEES	1,657	6,322	13,545
AVERAGE HHI	\$80,908	\$74,076	\$79,622
TOTAL HOUSEHOLDS	2,450	10,255	19,223
TRAFFIC COUNTS:	Anthony Hwy: ±8,000 VPD Slabtown Rd: ±2,000 VPD		

RYAN MYERS
717.843.5555
www.bennettwilliams.com

York Office: 3528 Concord Rd. York, PA 17402
Exton Office: 1 East Uwchlan Avenue, Suite 409, Exton, PA 19341
Lancaster Office: 150 Farmington Lane, Suite 201, Lancaster, PA 17601
New Jersey Office: 309 Fellowship Rd, Suite 200, Mt. Laurel, NJ 08054

Bennett Williams
COMMERCIAL REAL ESTATE

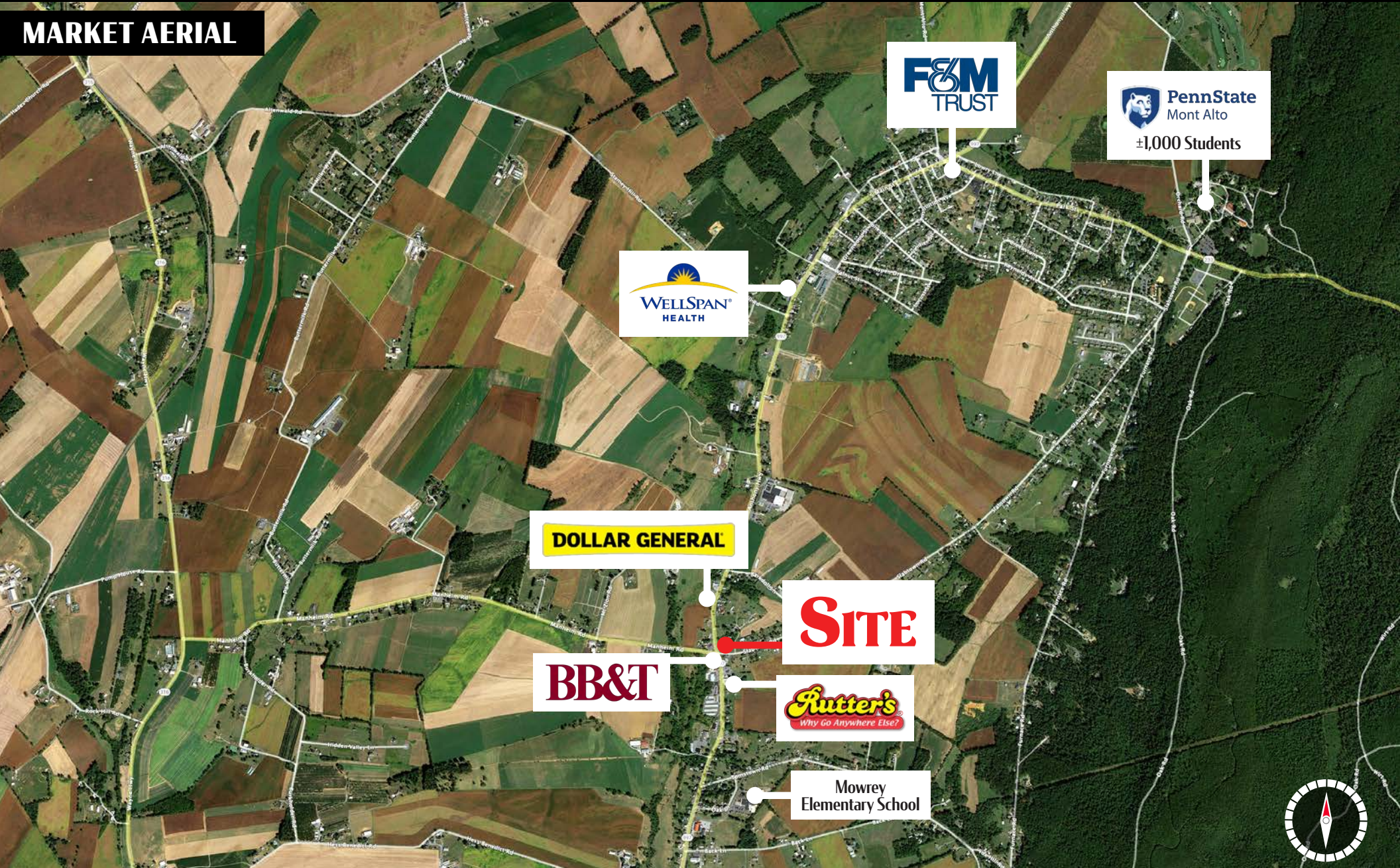
ACTIVE MEMBER OF:
RETAIL BROKERS NETWORK

7330 Anthony Highway

Waynesboro, PA 17268

Available For Sale

MARKET AERIAL



RYAN MYERS
717.843.5555
www.bennettwilliams.com

York Office: 3528 Concord Rd. York, PA 17402
Exton Office: 1 East Uwchlan Avenue, Suite 409, Exton, PA 19341
Lancaster Office: 150 Farmington Lane, Suite 201, Lancaster, PA 17601
New Jersey Office: 309 Fellowship Rd, Suite 200, Mt. Laurel, NJ 08054

Bennett WILLIAMS
COMMERCIAL REAL ESTATE

ACTIVE MEMBER OF:
RETAIL BROKERS NETWORK