

3214 E. Market St. | York, PA 17402

± 1,000 SF Office Available

Available For Lease

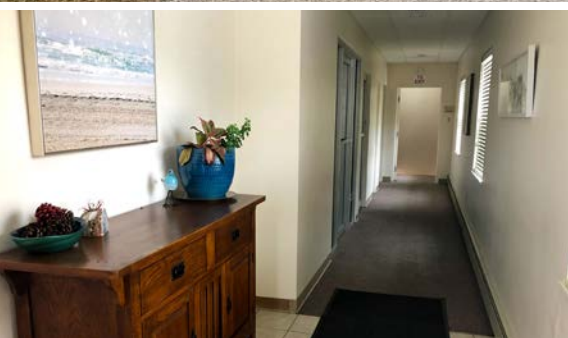
Property Overview

3214 E. Market St. located in East York just off the intersection of Route 24 & E. Market St. and one mile from Route 30 in a robust and heavily traveled thoroughfare with all the amenities in very close proximity. This office building offers dual access and plenty of private parking. 1,00 square foot office suite consists of a large bullpen area, two private offices, small miscellaneous room, and restroom. United States Postal Services, UPS Store, Chick-Fil-A, Home Depot, Rite Aid, Dairy Queen, The Paddock Restaurant, Papa John's, Rita's, and the NEFRA Communication Center area within the area. The suite is vacant and ready for occupancy at \$1,450.00 per month. Locally owned and professionally maintained.

DEMOGRAPHICS	1 MILE	3 MILE	5 MILE
TOTAL POPULATION	49,220	128,991	197,157
TOTAL EMPLOYEES	25,337	61,842	93,135
AVERAGE HHI	\$84,109	\$77,247	\$79,987
TOTAL HOUSEHOLDS	19,503	50,185	77,099

TRAFFIC COUNTS:

Market Street - ±20,000 VPD | **Route 30** - ±50,000 VPD



KEITH KAHLBAUGH
717.843.5555
www.bennettwilliams.com

York Office: 3528 Concord Rd. York, PA 17402
Exton Office: 1 East Uwchlan Avenue, Suite 409, Exton, PA 19341
Lancaster Office: 150 Farmington Lane, Suite 201, Lancaster, PA 17601
New Jersey Office: 309 Fellowship Rd, Suite 200, Mt. Laurel, NJ 08054

Bennett WILLIAMS
RETAIL

ACTIVE MEMBER OF:
RETAIL BROKERS NETWORK

3214 E. Market St. | York, PA 17402

± 1,000 SF Office Available

Available For Lease

MARKET AERIAL



±50,000 VPD

±80,000 VPD

SITE

KEITH KAHLBAUGH
717.843.5555
www.bennettwilliams.com

York Office: 3528 Concord Rd. York, PA 17402
Exton Office: 1 East Uwchlan Avenue, Suite 409, Exton, PA 19341
Lancaster Office: 150 Farmington Lane, Suite 201, Lancaster, PA 17601
New Jersey Office: 309 Fellowship Rd, Suite 200, Mt. Laurel, NJ 08054

Bennett WILLIAMS
RETAIL

ACTIVE MEMBER OF:
RETAIL BROKERS NETWORK