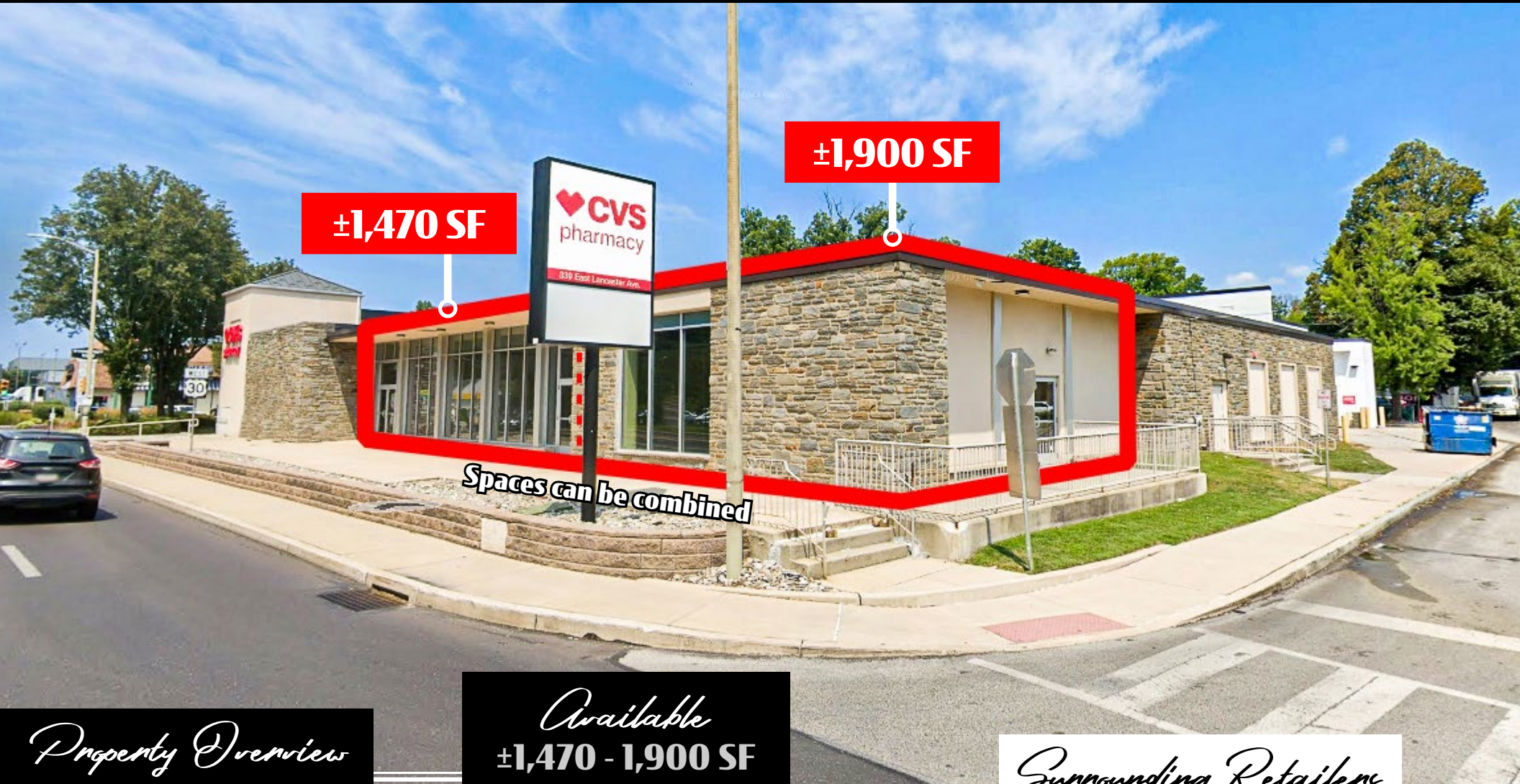


# 339 E. LANCASTER AVE

Wynnewood, PA 19096

*For Lease*



## *Property Overview*

*Available*  
**±1,470 - 1,900 SF**

## *Surrounding Retailers*

339 E. Lancaster Ave is a high traffic location with 1,470 - 1,900 SF available for lease, spaces can be combined. Part of a 31,400 SF building, sublease from current CVS. Site also sits along Rt 30, which has over ±20,000 VPD.



**Gary Russell | Anthony Curcio | Jane McGill**

For Lease Information: 610.321.1111 | Learn more online at [www.bennettwilliams.com](http://www.bennettwilliams.com)



COMMERCIAL BROKERAGE. *Redefined.*

# 339 E. LANCASTER AVE

Wynnewood, PA 19096

*For Lease*

## ROAD COUNTS



## DEMOGRAPHICS

	1 MILE	3 MILE	5 MILE
TOTAL POPULATION	18,513	168,238	490,592
TOTAL EMPLOYEES	8,781	59,968	169,858
AVERAGE HHI	\$203,618	\$136,541	\$102,761
TOTAL HOUSEHOLDS	7,901	65,267	198,069

## TRAFFIC COUNTS:

**Lancaster Ave - ±20,000 VPD**



## *Trade Area*

Wynnewood is a densely populated, high income suburb of the Philadelphia MSA. Situated along Lancaster Avenue (US Route 30), the area is home to numerous retail projects, auto dealerships and residential developments.

## *Location*

Join CVS as part of the Wynnewood West Shopping Center. Large glass frontage on US Route 30 with many nearby national retailers including Target, Giant Foods, Whole Foods, Old Navy, Bed, Bath & Beyond, more.



Gary Russell | Anthony Curcio | Jane McGill

For Lease Information: 610.321.1111 | Learn more online at [www.bennettwilliams.com](http://www.bennettwilliams.com)

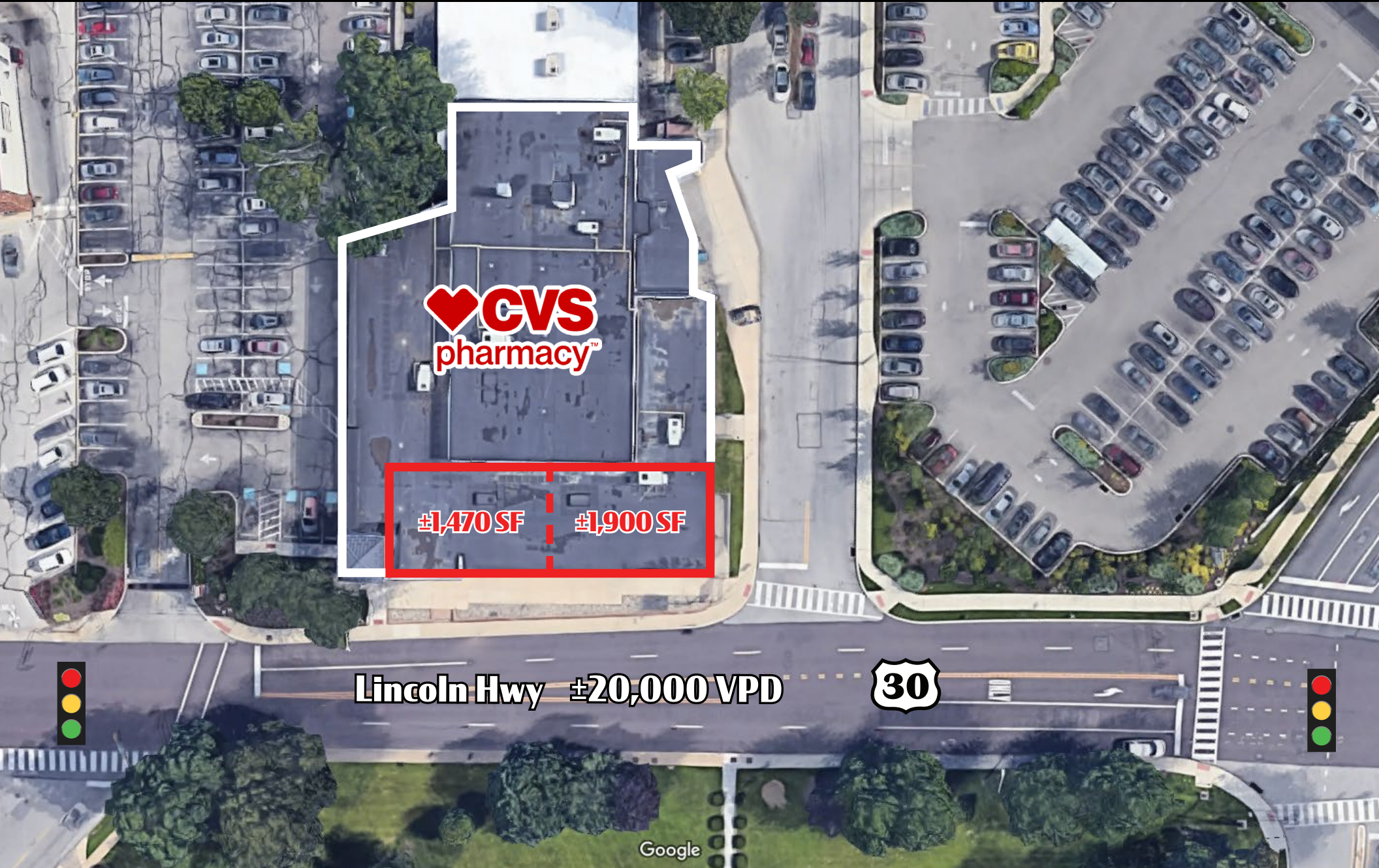


COMMERCIAL BROKERAGE. *Redefined.*

# 339 E. LANCASTER AVE

Wynnewood, PA 19096

*For Lease*



Lincoln Hwy ±20,000 VPD



Gary Russell | Anthony Curcio | Jane McGill

For Lease Information: 610.321.1111 | Learn more online at [www.bennettwilliams.com](http://www.bennettwilliams.com)

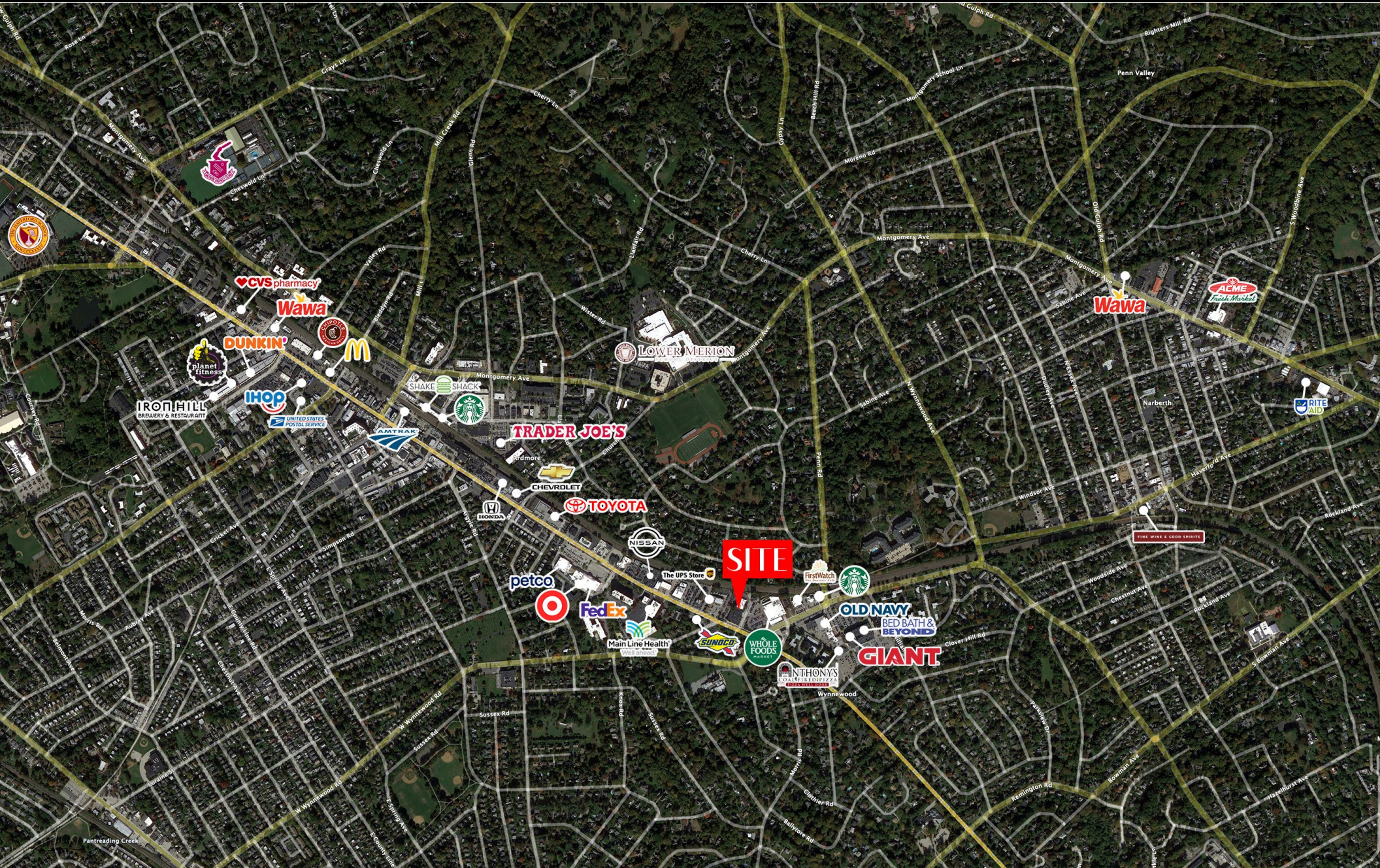


COMMERCIAL BROKERAGE. *Redefined.*

# 339 E. LANCASTER AVE

Wynnewood, PA 19096

*For Lease*



Gary Russell | Anthony Curcio | Jane McGill

For Lease Information: 610.321.1111 | Learn more online at [www.bennettwilliams.com](http://www.bennettwilliams.com)

ACTIVE MEMBER OF:  
**RETAIL** BROKERS NETWORK

COMMERCIAL BROKERAGE. *Redefined.*

# About Bennett Williams



Since its founding in 1956, Bennett Williams Commercial, Inc. has offered full Commercial Real Estate services to the Central Pennsylvania region and beyond. We have served thousands of commercial, industrial and retail clients as we have grown in size and reputation. With our team of both experienced and knowledgeable executives as well as young and energetic professionals, we have the team to handle any commercial real estate need.

At Bennett Williams, your investments are always in good hands. Our retail Investment sales group provides top notch investment sales services for all categories of retail investments for both buyers and sellers alike, whether institutional or local, throughout the Central Pennsylvania landscape. Whether the asset is a single or multi-tenant, we pride ourselves in going above and beyond the expectations of the client to achieve maximum results. With over 60 years under our belt, and over 25 licensed real estate professionals, we possess the knowledge, experience, and dedication trusted by many in the investment sales segment of the industry.



Bennett Williams is a member of the Capital Markets Real Estate Network, a nationwide network of professionals dedicated to, and specializing in the capital markets segment of commercial real estate. CMRE is comprised of the most highly-qualified, best-experienced independent Capital Market real estate professionals.



## LISTING AGENTS:

### Garry Russell

GRussell@bennettwilliams.com

### Anthony Curcio

ACurcio@bennettwilliams.com

### Jane McGill

JMcGill@bennettwilliams.com

## OUR LOCATIONS:

### YORK OFFICE:

3528 Concord Rd.  
York, PA 17402

### EXTON OFFICE:

1 E. Uwchlan Ave.  
Suite 409, Exton, PA 19341

### WILLIAMSPORT OFFICE:

1000 Commerce Park Dr, Suite 310  
Williamsport, PA 17701

### LANCASTER OFFICE:

150 Farmington Lane, Suite 201  
Lancaster, PA 17601

### NEW JERSEY OFFICE:

236 E. Route 38, Suite 130  
Moorestown, NJ 08057

### WEST CHESTER OFFICE:

107 E Chestnut St, Suite 107  
West Chester, PA 19380

### CONTACT US

717.843.5555 | [www.bennettwilliams.com](http://www.bennettwilliams.com)

