

±1,200 SF  
AVAILABLE

# East Market Street Plaza

3915-3943 East Market Street | York, PA 17402

*For Lease*



## Property Overview

East Market Street Plaza is an 18,650 square foot neighborhood retail center with excellent visibility along Route 462 just the East side of York. The center is ideally located among a dense residential and daytime consumer population. East Market Street Plaza is on 2.7 acres and is easily accessible to routes I-83 and Route 30.



**SUBWAY**

**State Farm**



Ashlee Lehman | Brad Rohrbaugh | Chad Stine

For Leasing Information: 717.843.5555 | Learn more online at [www.bennettwilliams.com](http://www.bennettwilliams.com)



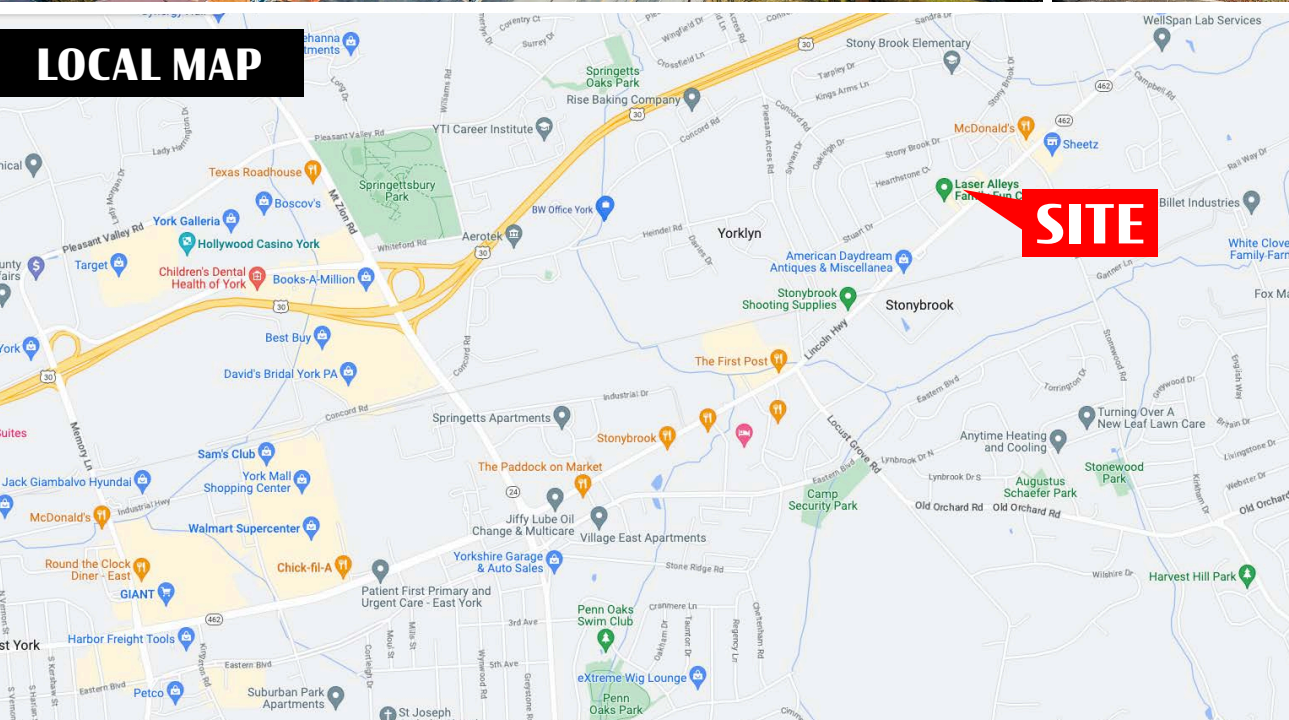
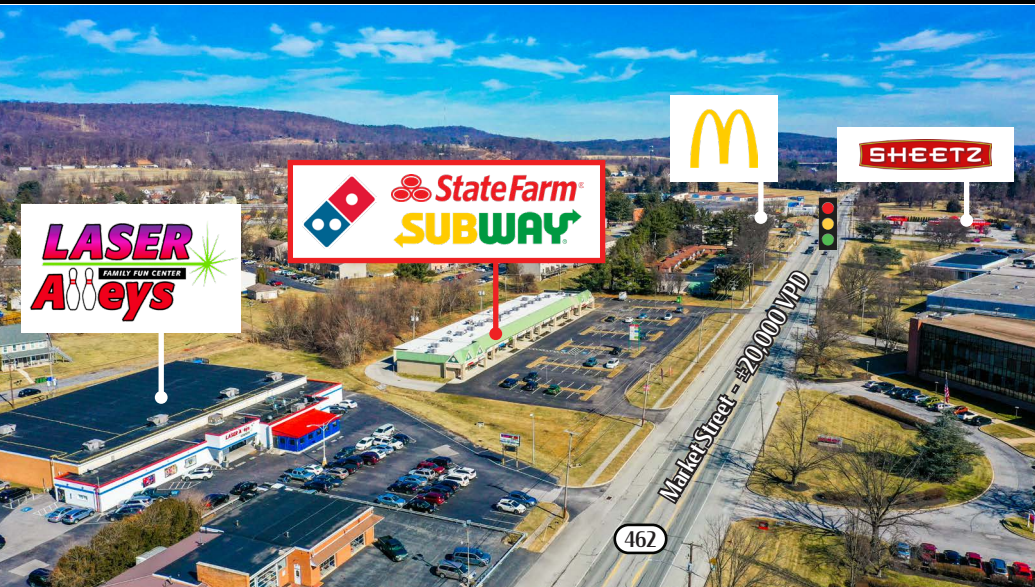
COMMERCIAL BROKERAGE. *Redefined.*



# East Market Street Plaza

3915-3943 East Market Street | York, PA 17402

Available For Lease



DEMOGRAPHICS	3 MILE	5 MILE	7 MILE
TOTAL POPULATION	74,174	143,042	206,177
TOTAL EMPLOYEES	45,089	74,699	96,760
AVERAGE HHI	\$73,170	\$77,172	\$81,131
TOTAL HOUSEHOLDS	29,354	55,813	80,588
TRAFFIC COUNTS:			
East Market Street - ±20,000 VPD   Rt 30 - ±50,000 VPD			



Ashlee Lehman | Brad Rohrbaugh | Chad Stine  
For Leasing Information: 717.843.5555 | Learn more online at [www.bennettwilliams.com](http://www.bennettwilliams.com)



COMMERCIAL BROKERAGE. *Redefined.*

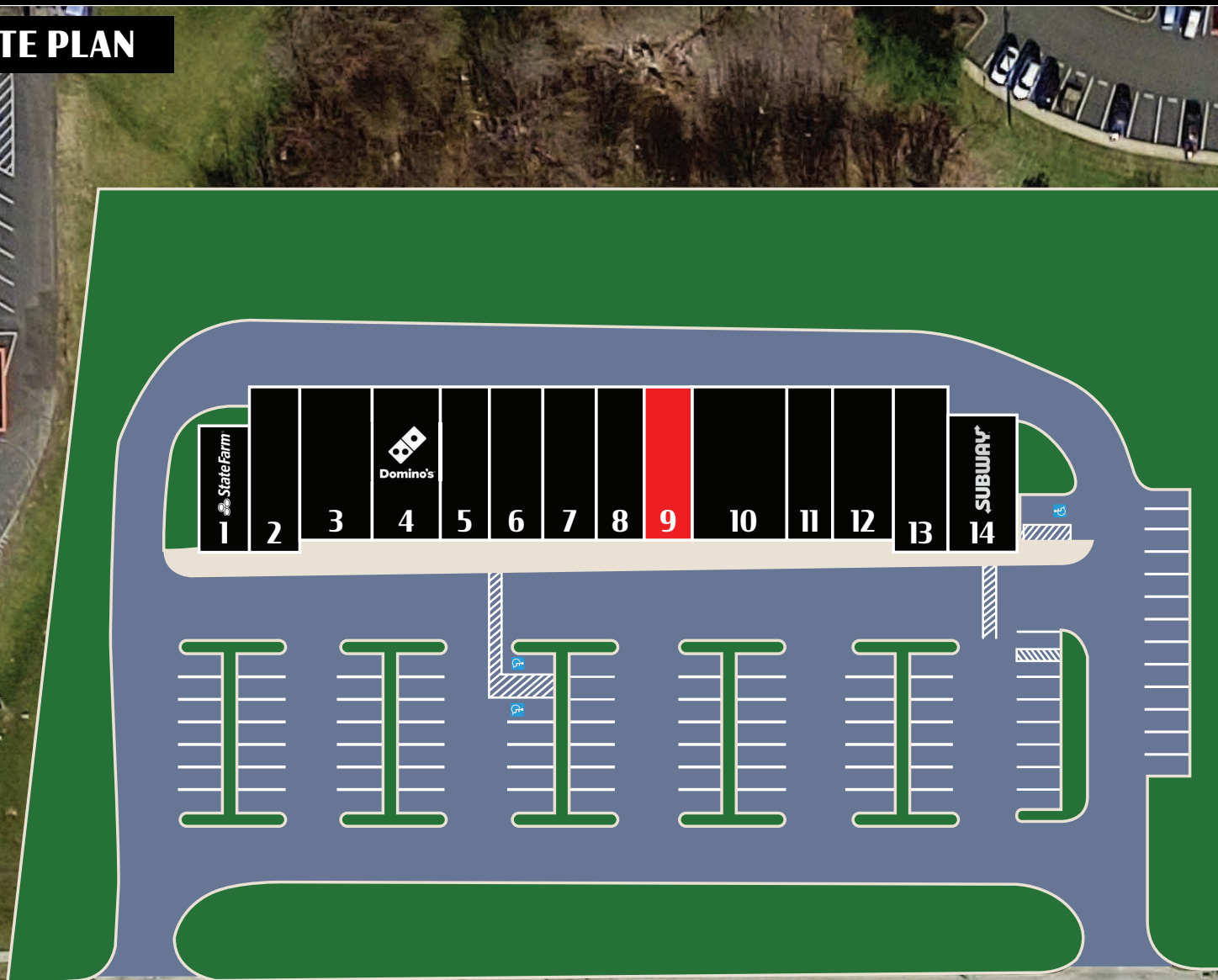


# East Market Street Plaza

3915-3943 East Market Street | York, PA 17402

*Available For Lease*

## SITE PLAN



SUITE	TENANT	SF
1	State Farm Insurance	1,000
2	Twice As Sweet Kids	1,300
3	Elegant Nails	1,500
4	Domino's Pizza	1,500
5	CBD Supply Penn & Wellness	1,000
6	Durham Ladies Coffee Shop	1,400
7	I Heart Ice Cream	1,200
8	Studio on Market	1,200
9	AVAILABLE	1,200
10	Shields Creative, LLC	2,400
11	Beauty and the Brows	1,000
12	Designer Tans	1,400
13	Green Garden Restaurant	1,300
14	Subway	1,250
CENTER TOTAL		18,650

**East Market Street - ±20,000 VPD**

462



Ashlee Lehman | Brad Rohrbaugh | Chad Stine

For Leasing Information: 717.843.5555 | Learn more online at [www.bennettwilliams.com](http://www.bennettwilliams.com)



COMMERCIAL BROKERAGE. *Redefined.*



# East Market Street Plaza

3915-3943 East Market Street | York, PA 17402

Available For Lease

## MARKET OVERVIEW

### York Galleria



KOHL'S

### York Towne Center



### East Market Street Plaza



### Stonybrook Shopping Center



Raymour & Flanigan  
FURNITURE | MATTRESSES



### York Mall Shopping Center



### York Marketplace



Ashlee Lehman | Brad Rohrbaugh | Chad Stine

For Leasing Information: 717.843.5555 | Learn more online at [www.bennettwilliams.com](http://www.bennettwilliams.com)



COMMERCIAL BROKERAGE. *Redefined.*



# About Bennett Williams



Since its founding in 1956, Bennett Williams Commercial, Inc. has offered full Commercial Real Estate services to the Central Pennsylvania region and beyond. We have served thousands of commercial, industrial and retail clients as we have grown in size and reputation. With our team of both experienced and knowledgeable executives as well as young and energetic professionals, we have the team to handle any commercial real estate need.

At Bennett Williams, your investments are always in good hands. Our retail Investment sales group provides top notch investment sales services for all categories of retail investments for both buyers and sellers alike, whether institutional or local, throughout the Central Pennsylvania landscape. Whether the asset is a single or multi-tenant, we pride ourselves in going above and beyond the expectations of the client to achieve maximum results. With over 60 years under our belt, and over 25 licensed real estate professionals, we possess the knowledge, experience, and dedication trusted by many in the investment sales segment of the industry.



Bennett Williams is a member of the Capital Markets Real Estate Network, a nationwide network of professionals dedicated to, and specializing in the capital markets segment of commercial real estate. CMRE is comprised of the most highly-qualified, best-experienced independent Capital Market real estate professionals.

## LISTING AGENTS:

### Ashlee Lehman

[alehman@bennettwilliams.com](mailto:alehman@bennettwilliams.com)

### Brad Rohrbaugh

[brohrbaugh@bennettwilliams.com](mailto:brohrbaugh@bennettwilliams.com)

### Chad Stine

[cstine@bennettwilliams.com](mailto:cstine@bennettwilliams.com)

## OUR LOCATIONS:

### YORK OFFICE:

3528 Concord Rd.  
York, PA 17402

### LANCASTER OFFICE:

150 Farmington Lane  
Lancaster, PA 17601

### EXTON OFFICE:

1 E. Uwchlan Ave. Suite 409,  
Exton, PA 19341

### NEW JERSEY OFFICE:

236 E. Route 38, Suite 130  
Moorestown, NJ 08057

### WILLIAMSPORT OFFICE:

1000 Commerce Park Dr, Suite 310,  
Williamsport, PA 17701

### CONTACT US

717.843.5555  
[www.bennettwilliams.com](http://www.bennettwilliams.com)

