

**101 Homestead Road | Grantville, PA 17028**

**± 48 Acres of Land Available | \$5,995,000.00**

*Available For Sale*

## Property Overview

**Well equipped horse farm with development possibilities**

±48 Acres currently zoned agriculture with possible development opportunities. Three buildings are included in the sale; a renovated bank barn with 11 horse stalls, a brand new small barn with a copper roof and horse treadmill, and a small shop. On site water, sewer and electrical supply. Land borders two addresses 101 Homestead Road Tax Id UPI 21-2279469-393713-0000 and 10443 Mountain Road Tax ID UPI 21-2278378-394443-0000. located in East Hanover Township, Lebanon County.



DEMOGRAPHICS	3 MILE	5 MILE	7 MILE
TOTAL POPULATION	2,905	7,312	21,266
TOTAL EMPLOYEES	1,340	2,214	6,496
AVERAGE HHI	\$91,282	\$97,345	\$96,022
TOTAL HOUSEHOLDS	1,152	2,855	8,380

### TRAFFIC COUNTS:

**Mountain Road** - ±2,000 VPD | **I-81** - ±31,000 VPD

**AVAILABLE**  
**± 48 Acres**

Mountain Road

443

Homestead Rd

Pleasant View Rd

**TOM TROCCOLI**  
717.390.9858  
www.bennettwilliams.com

York Office: 3528 Concord Rd. York, PA 17402  
Exton Office: 1 East Uwchlan Avenue, Suite 409, Exton, PA 19341  
Lancaster Office: 2173 Embassy Drive Lancaster, Pa 17603  
New Jersey Office: 309 Fellowship Rd, Suite 200, Mt. Laurel, NJ 08054

**Bennett WILLIAMS**  
COMMERCIAL REAL ESTATE

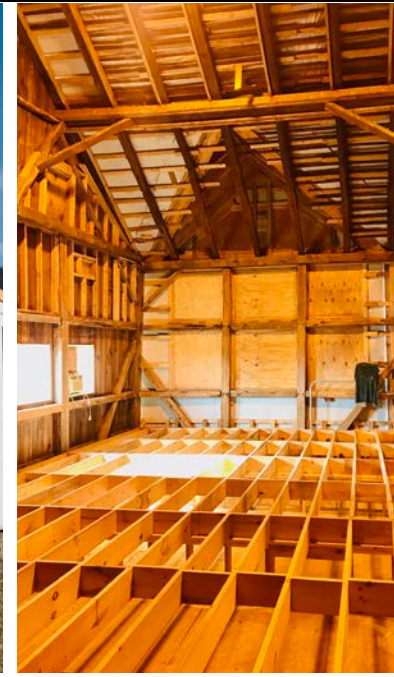
ACTIVE MEMBER OF:  
**RETAIL** BROKERS  
NETWORK



**101 Homestead Road | Grantville, PA 17028**

**± 48 Acres of Land Available | \$5,995,000.00**

*Available For Sale*



**TOM TROCCOLI**  
717.390.9858  
[www.bennettwilliams.com](http://www.bennettwilliams.com)

York Office: 3528 Concord Rd. York, PA 17402  
Exton Office: 1 East Uwchlan Avenue, Suite 409, Exton, PA 19341  
Lancaster Office: 2173 Embassy Drive Lancaster, Pa 17603  
New Jersey Office: 309 Fellowship Rd, Suite 200, Mt. Laurel, NJ 08054

**Bennett WILLIAMS**  
COMMERCIAL REAL ESTATE

ACTIVE MEMBER OF:  
**RETAIL** BROKERS  
NETWORK



**101 Homestead Road | Grantville, PA 17028**

**± 48 Acres of Land Available | \$5,995,000.00**

*Available For Sale*

**MARKET AERIAL**



**TOM TROCCOLI**  
717.390.9858  
[www.bennettwilliams.com](http://www.bennettwilliams.com)

York Office: 3528 Concord Rd. York, PA 17402  
Exton Office: 1 East Uwchlan Avenue, Suite 409, Exton, PA 19341  
Lancaster Office: 2173 Embassy Drive Lancaster, Pa 17603  
New Jersey Office: 309 Fellowship Rd, Suite 200, Mt. Laurel, NJ 08054

**Bennett WILLIAMS**  
COMMERCIAL REAL ESTATE

ACTIVE MEMBER OF:  
**RETAIL BROKERS**  
NETWORK