

# Tri County Plaza

204 Shoemaker Road Pottstown, PA | 19464

*For Lease*



Signalized intersection of **Rt. 100 & Shoemaker Road** is the center of retail activity for Pottstown market. Center is just north of Rt. 422 Expressway. Excellent visibility and easy access from Rt. 100. Pylon signage available. Proven retail corner. Coming soon, a freestanding Panera Bread at Tri County Plaza as well as a new Chipotle development at the corner of Rt. 100 & Shoemaker Road.

## *Surrounding Retailers*



Jane McGill | Bill Hess

For Leasing Information: 717.843.5555 | Learn more online at [www.bennettwilliams.com](http://www.bennettwilliams.com)

ACTIVE MEMBER OF:  
**RETAIL** BROKERS  
NETWORK

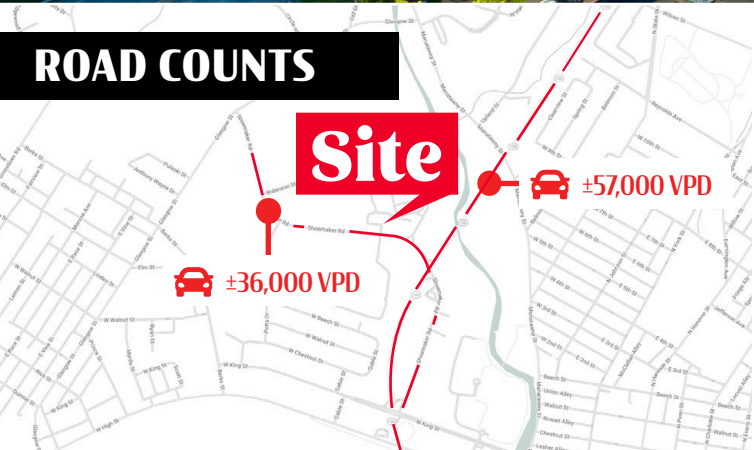
COMMERCIAL BROKERAGE. *Redefined.*



# Tri County Plaza

204 Shoemaker Road Pottstown, PA | 19464

*For Lease*



DEMOGRAPHICS	1 MILE	3 MILE	5 MILE
TOTAL POPULATION	10,837	43,902	88,169
TOTAL EMPLOYEES	5,949	22,824	30,720
AVERAGE HHI	\$64,149	\$83,369	\$99,803
TOTAL HOUSEHOLDS	4,514	17,536	33,334

**TRAFFIC COUNTS**  
 Rt 100 ±30,000 VPD | Shoemaker Rd ±12,000 VPD



Jane McGill | Bill Hess  
 For Leasing Information: 717.843.5555 | Learn more online at [www.bennettwilliams.com](http://www.bennettwilliams.com)

ACTIVE MEMBER OF:  
**RETAIL** BROKERS NETWORK

COMMERCIAL BROKERAGE. *Redefined.*

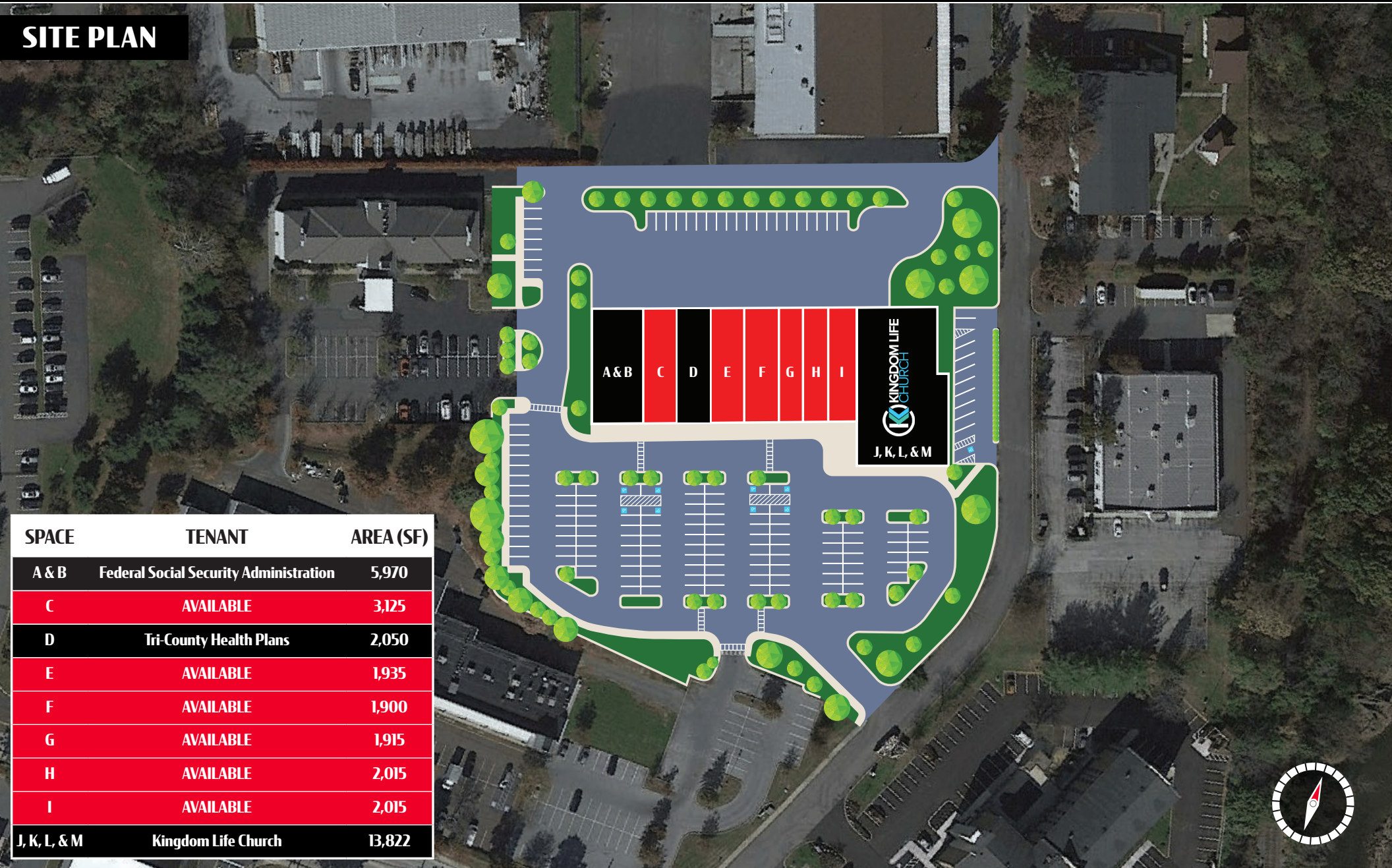


# Tri County Plaza

204 Shoemaker Road Pottstown, PA | 19464

*For Lease*

## SITE PLAN



SPACE	TENANT	AREA (SF)
A & B	Federal Social Security Administration	5,970
C	AVAILABLE	3,125
D	Tri-County Health Plans	2,050
E	AVAILABLE	1,935
F	AVAILABLE	1,900
G	AVAILABLE	1,915
H	AVAILABLE	2,015
I	AVAILABLE	2,015
J, K, L, & M	Kingdom Life Church	13,822



Jane McGill | Bill Hess  
For Leasing Information: 717.843.5555 | Learn more online at [www.bennettwilliams.com](http://www.bennettwilliams.com)



COMMERCIAL BROKERAGE. *Redefined.*



# Tri County Plaza

204 Shoemaker Road Pottstown, PA | 19464

*For Lease*

MID LEVEL AERIAL



Jane McGill | Bill Hess  
For Leasing Information: 717.843.5555 | Learn more online at [www.bennettwilliams.com](http://www.bennettwilliams.com)

ACTIVE MEMBER OF:  
**RETAIL** BROKERS NETWORK

COMMERCIAL BROKERAGE. *Redefined.*

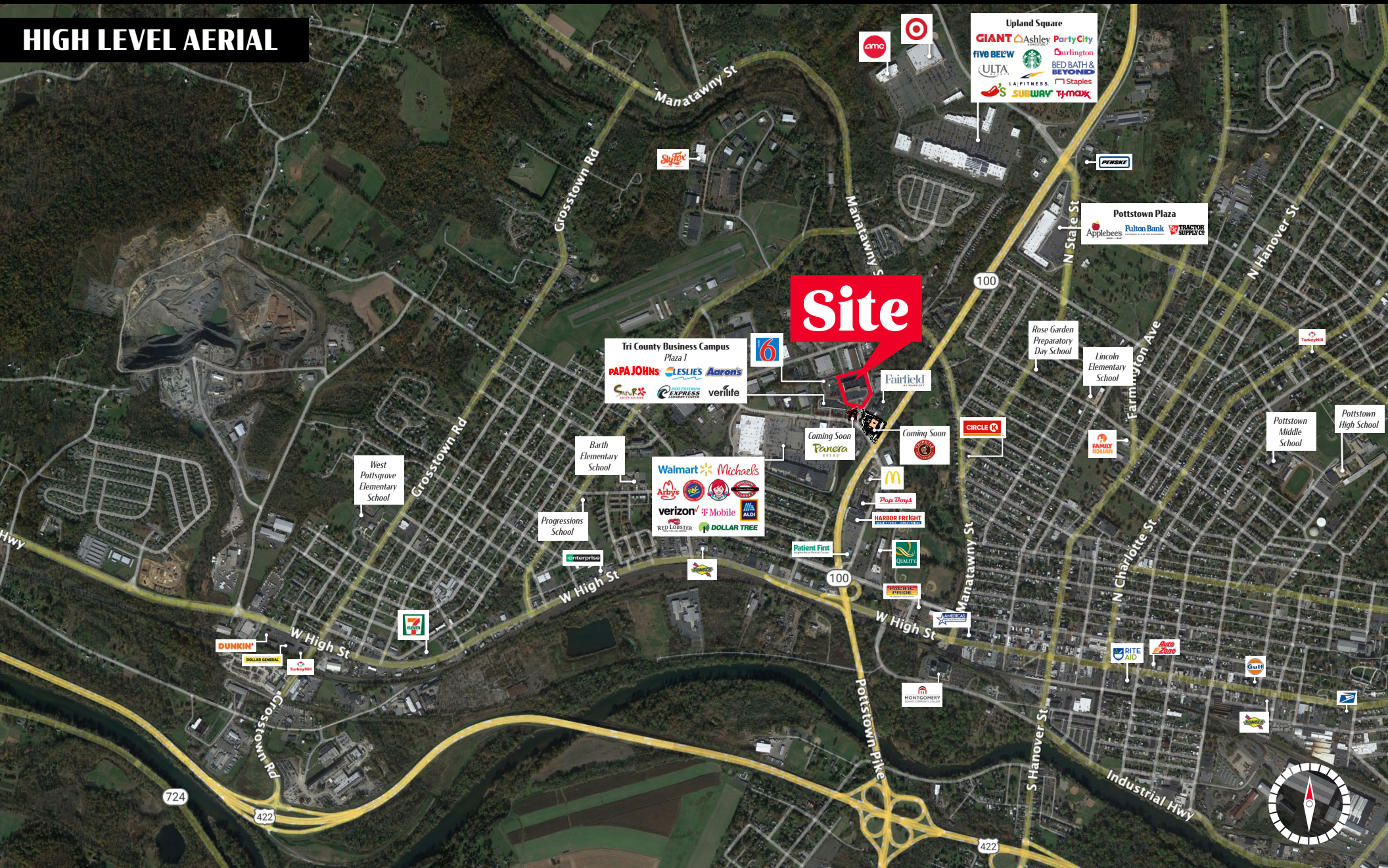


# Tri County Plaza

204 Shoemaker Road Pottstown, PA | 19464

*For Lease*

HIGH LEVEL AERIAL



Jane McGill | Bill Hess

For Leasing Information: 717.843.5555 | Learn more online at [www.bennettwilliams.com](http://www.bennettwilliams.com)

ACTIVE MEMBER OF:  
**RETAIL** BROKERS  
NETWORK

COMMERCIAL BROKERAGE. *Redefined.*



# About Bennett Williams



Since its founding in 1956, Bennett Williams Commercial, Inc. has offered full Commercial Real Estate services to the Central Pennsylvania region and beyond. We have served thousands of commercial, industrial and retail clients as we have grown in size and reputation. With our team of both experienced and knowledgeable executives as well as young and energetic professionals, we have the team to handle any commercial real estate need.

At Bennett Williams, your investments are always in good hands. Our retail Investment sales group provides top notch investment sales services for all categories of retail investments for both buyers and sellers alike, whether institutional or local, throughout the Central Pennsylvania landscape. Whether the asset is a single or multi-tenant, we pride ourselves in going above and beyond the expectations of the client to achieve maximum results. With over 60 years under our belt, and over 25 licensed real estate professionals, we possess the knowledge, experience, and dedication trusted by many in the investment sales segment of the industry.



Bennett Williams is a member of the Capital Markets Real Estate Network, a nationwide network of professionals dedicated to, and specializing in the capital markets segment of commercial real estate. CMRE is comprised of the most highly-qualified, best-experienced independent Capital Market real estate professionals.

## LISTING AGENT(S):

**Jane McGill**

JMcGill@bennettwilliams.com

**Bill Hess**

BHess@bennettwilliams.com

## OUR LOCATIONS:

### YORK OFFICE:

3528 Concord Rd.  
York, PA 17402

### EXTON OFFICE:

1 E. Uwchlan Ave.  
Suite 409, Exton, PA 19341

### WILLIAMSPORT OFFICE:

1000 Commerce Park Dr, Suite 310  
Williamsport, PA 17701

### LANCASTER OFFICE:

150 Farmington Ln. Suite 201  
Lancaster, PA 17601

### NEW JERSEY OFFICE:

236 E. Route 38, Suite 130  
Moorestown, NJ 08057

### WEST CHESTER OFFICE:

107 E. Chestnut St. Suite 107  
West Chester, PA 19380

### CONTACT US

717.843.5555

[www.bennettwilliams.com](http://www.bennettwilliams.com)

