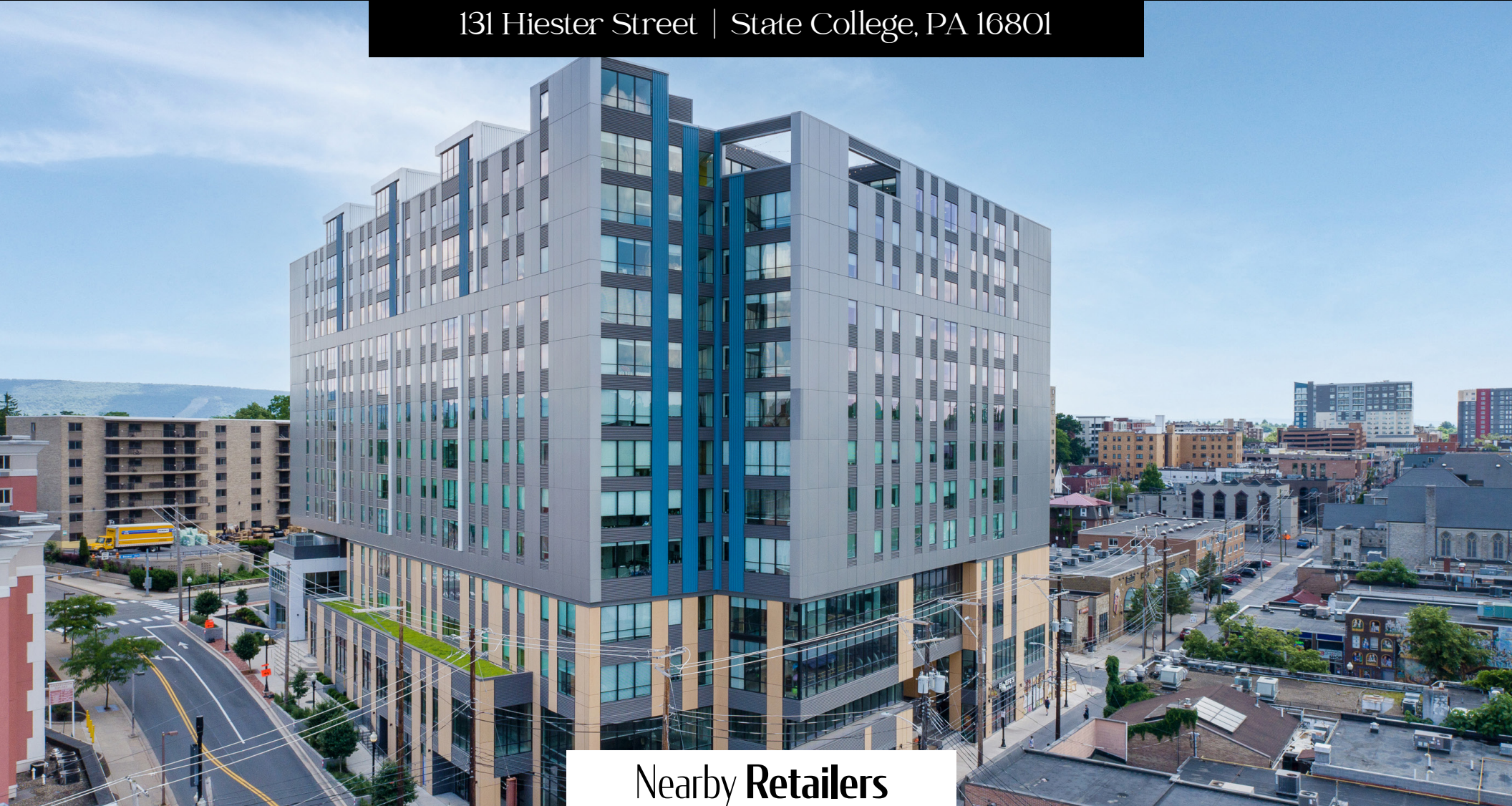


For Lease

— THE —  
**MAXXEN**

±771-9,888 SF

131 Hiester Street | State College, PA 16801



Nearby Retailers



**DUNKIN'**

**PRIMANTI  
BROS.**

**URBAN  
OUTFITTERS**



**CVS  
pharmacy**



**Kandy Weader | Luke Higgins**  
For Leasing Information: 717.843.5555 | Learn more online at [www.bennettwilliams.com](http://www.bennettwilliams.com)

ACTIVE MEMBER OF:  
**RETAIL BROKERS NETWORK**

COMMERCIAL BROKERAGE. *Redefined*



For **Lease**  
±771-9,888 SF

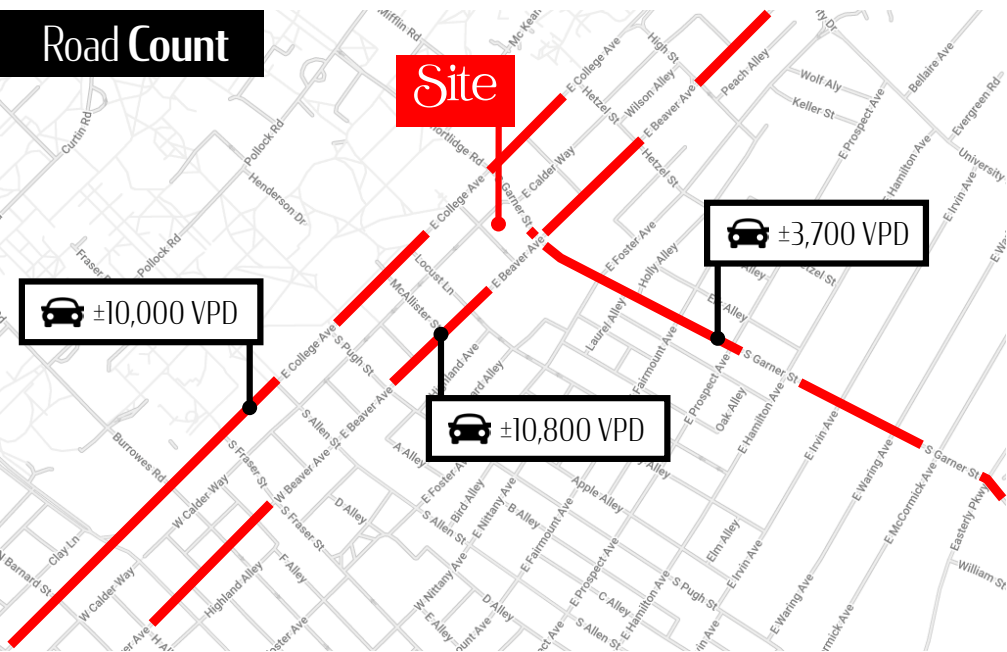
## Property Overview

The Maxxen is a prime corner retail/restaurant space for lease in the heart of downtown State College, PA. Approximately 1,200–22,000 SF available on two levels with 130 parking spaces. The site is in walking distance to a unique mix of local and national tenants including Dunkin, Chipotle, Urban Outfitters, Jimmy Johns and Primanti Bros. Join the current tenants that have recently joined the Maxxen such as Tropical Smoothie, El Jefe's Taqueria, and Mezza Mediterranean Grill. The 12-story, mixed-use development consists of a 228-unit luxury student apartment building with more than 755 beds and garage parking. The property is one half block from Pennsylvania State University, a top 20 public research university with strong enrollment of more than 47,000 students.

### Site Map



### Road Count



### DEMOGRAPHICS

TOTAL POPULATION

1 MILE

5 MILES

10 MILES

35,276

90,441

124,030

TOTAL EMPLOYEES

10,674

38,436

48,715

AVERAGE HHI

\$32,262

\$64,731

\$68,508

TOTAL HOUSEHOLDS

9,065

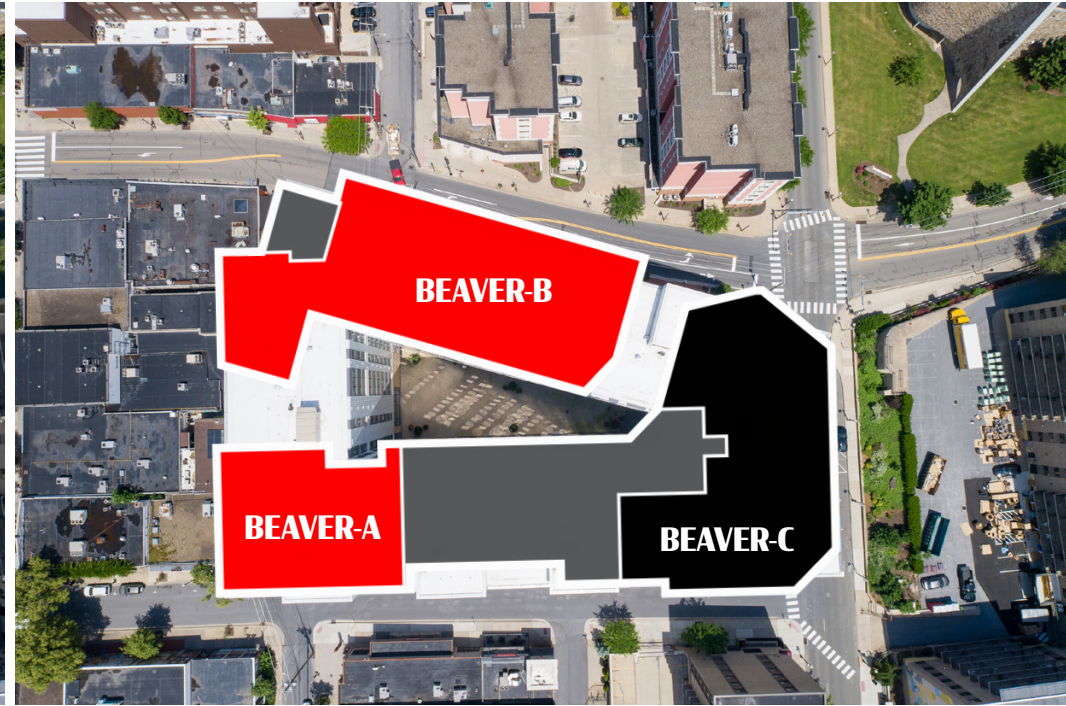
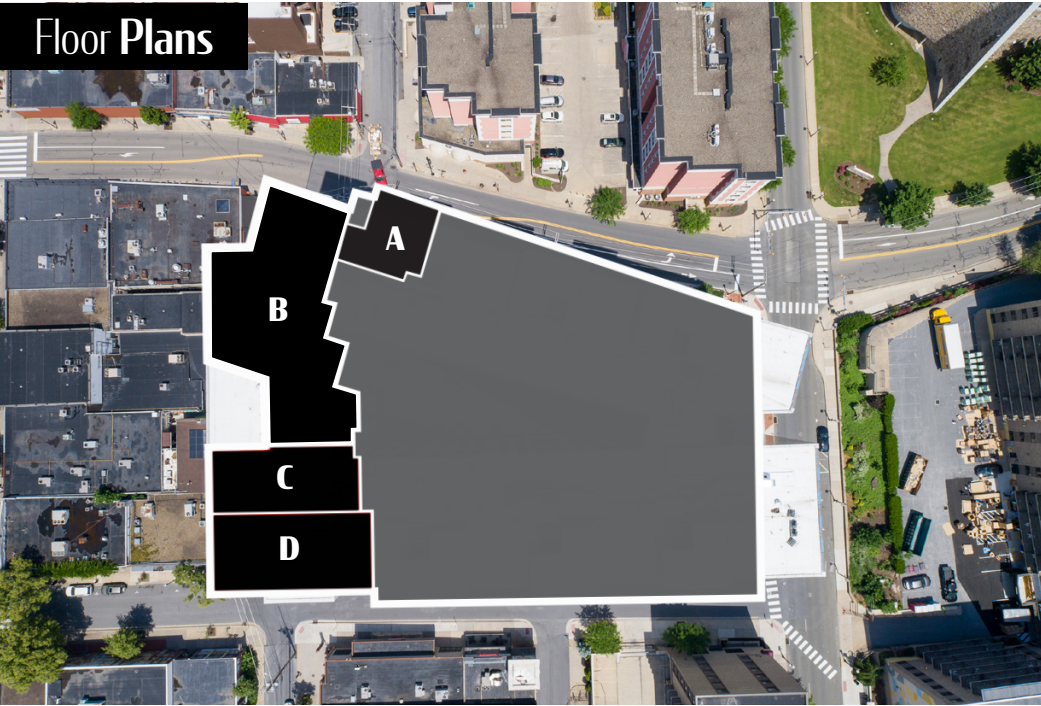
33,286

45,562

**TRAFFIC COUNTS: East Beaver Avenue - ± 10,800 VPD**



Floor Plans



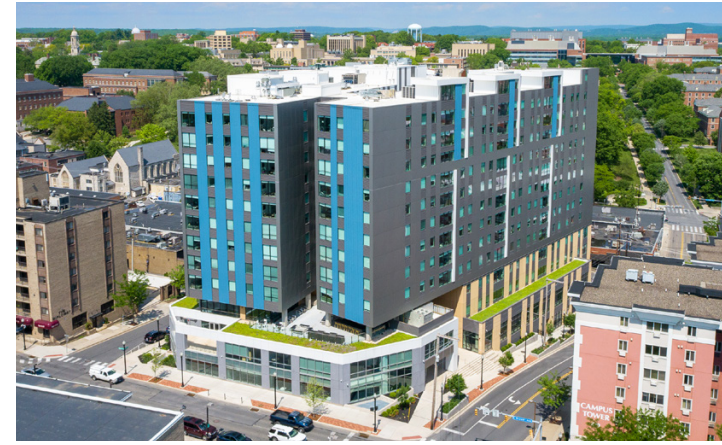
SPACE	LEVEL	TENANT	AREA (SF)
A	1	Tropical Smoothie	1,255
B	1	Buffalo Wild Wings	6,000
C	1	El Jefe's Taqueria	4,906
D	1	Mezza Mediterranean Grill	9,888

SPACE	LEVEL	TENANT	AREA (SF)
BEAVER-A	2	AVAILABLE	4,906
BEAVER-B	2	AVAILABLE	771-9,888
BEAVER-C	2	Penn State Hillel	8,982

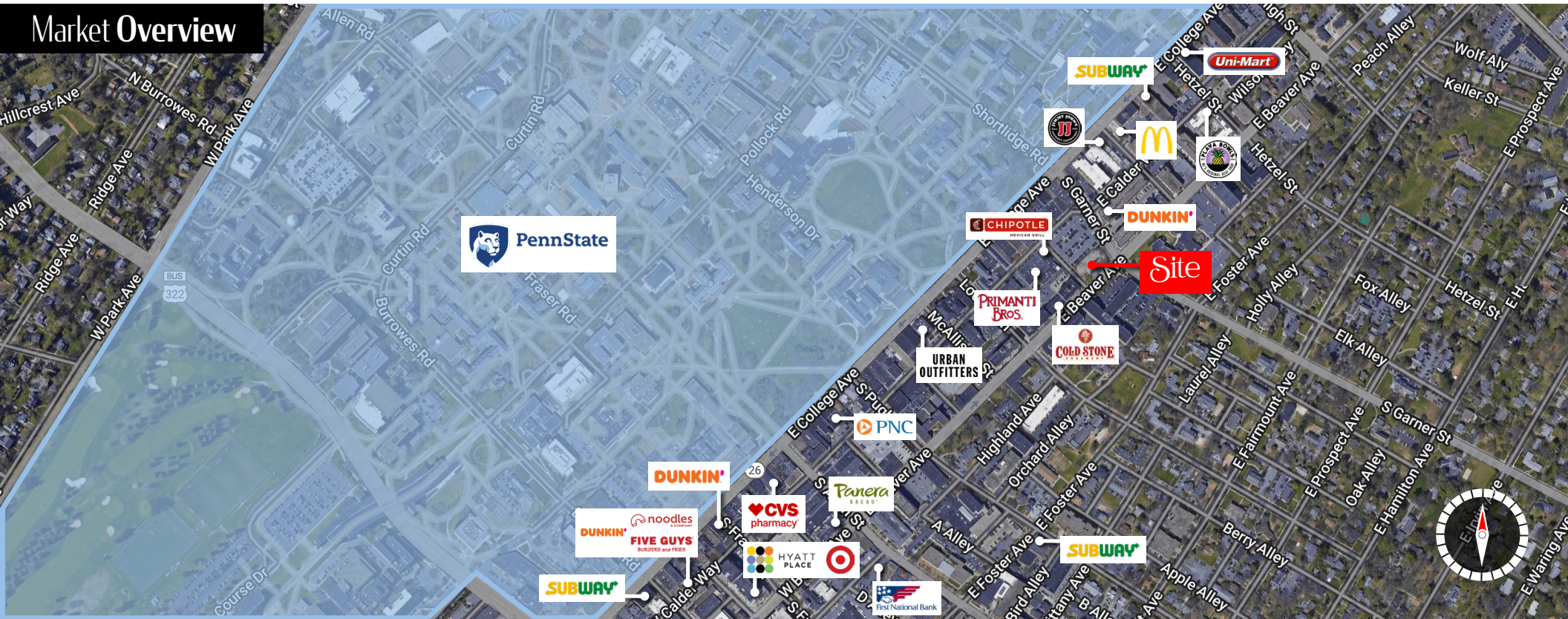


## Location Overview

Level One of the Maxxen is located at Garner Street/Calder Way/Heister Street with 1,255-7,255 SF of contiguous space available. Level Two is located off of Beaver Ave and Garner Street with 771-14,794 SF available. A staircase can be added to connect the 1<sup>st</sup> and 2<sup>nd</sup> floors for more contiguous space. The building is located near Penn State University, the largest employer in the area with over 40,000 employees and 45,000 students, who combined account for over \$900M in annual spending. State College attracts over 1.5M visitors a year that generate more than \$1B for the state economy with a population of 246,619 and a HH income of \$50,038 in 45-minute drive time.



## Market Overview



## OUR LOCATIONS:

### YORK OFFICE:

3528 Concord Rd.  
York, PA 17402

### LANCASTER OFFICE:

150 Farmington Lane, Suite 201  
Lancaster, PA 17601

### EXTON OFFICE:

1 E. Uwchlan Ave.  
Suite 409, Exton, PA 19341

### STATE COLLEGE OFFICE:

330 Innovation Park, Suite 205  
State College, PA 16803

### WEST CHESTER OFFICE:

107 E Chestnut St, Suite 107  
West Chester, PA 19380

### NEW JERSEY OFFICE:

236 E. Route 38, Suite 130  
Moorestown, NJ 08057

## LISTING AGENTS:



### Kandy Weader

KWeader@bennettwilliams.com



### Luke Higgins

LHiggins@bennettwilliams.com

## CONTACT US

717.843.5555 | [www.bennettwilliams.com](http://www.bennettwilliams.com)



## About Bennett Williams

Since its founding in 1956, Bennett Williams Commercial, Inc. has offered full Commercial Real Estate services to the Central Pennsylvania region and beyond. We have served thousands of commercial, industrial and retail clients as we have grown in size and reputation. With our team of both experienced and knowledgeable executives as well as young and energetic professionals, we have the team to handle any commercial real estate need.

Bennett Williams is a member of the Retail Brokers Network (RBN), a partnership of the best regional retail brokerage firms servicing all of the major markets across the United States. Our affiliates are handpicked ensuring that our clients receive top quality service and representation in any market they need help in, with 61 offices across 65+ markets and 700+ members.

