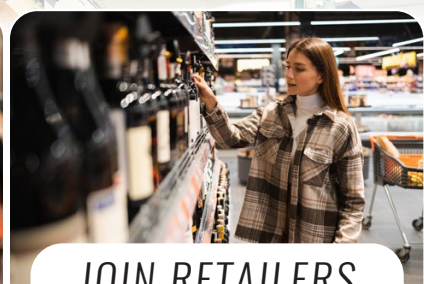


AVAILABLE FOR LEASE

Bennett Williams  
COMMERCIAL REAL ESTATE

# Palmyra SHOPPING CENTER

901 E. Main Street | Palmyra, PA 17078



JOIN RETAILERS

**weis**



FINE WINE & GOOD SPIRITS



**T Mobile**

**Davita**

# Palmyra

## SHOPPING CENTER

## PROJECT OVERVIEW

Palmyra Shopping Center is a 111,051 square foot anchored grocery center in Palmyra, Lebanon County, PA. The shopping center is located along East Main Street, which is the main retail corridor and travel artery that connects Hershey, Hummelstown, Palmyra, Annville and Lebanon. The current tenant lineup includes Weis Market, Goodwill, Davita, Great Clips, and PA Wine & Spirits, just to name a few.

### ANCHOR TENANTS

Weis - 46,912 SF

Goodwill - 18,104 SF

### AVAILABLE SPACE

± 2,805 - 5,890 SF

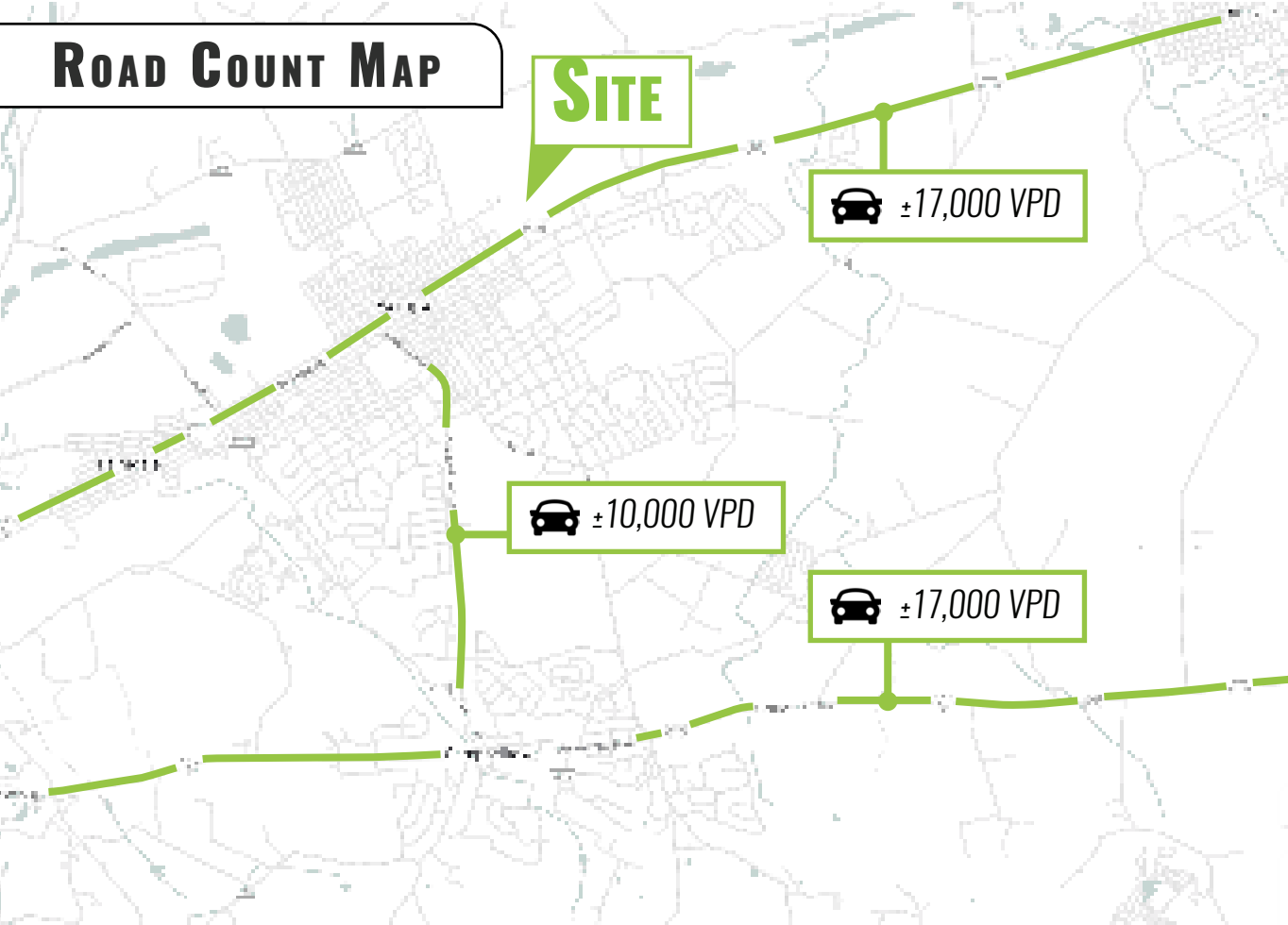


# PROPERTY LOCATION

Palmyra Shopping Center is strategically situated along East Main Street with exceptional frontage. East Main Street has become the area's main retail hub, pulling traffic from surrounding markets. Major retailers in the area include Walmart, Lowe's, Rite Aid Pharmacy, Grocery Outlet, Advanced Auto Parts, and many more.



# ROAD COUNT MAP



# TRADE AREA

Adding to the stability of the market are the 10-mile radius and 20-minute drive time demographics. Within a 20-minute drivetime, you will find 101,927 people in 40,112 households with an average annual income of \$99,356. The 10-mile radius demographics are even stronger, showing 173,288 people in 68,256 households with an average annual income of \$92,078. The area daily traffic is also attributed to the +/- 6,000 businesses and +/- 65,000 employees in the general area.

DEMOGRAPHICS	1 MILES	5 MILES	10 MILES
POPULATION	6,298	47,968	194,578
TOTAL HOUSEHOLDS	2,379	19,249	76,962
AVG HHI	\$88,505	\$95,238	\$92,238
TOTAL EMPLOYEES	774	23,776	70,927

*Palmyra*  
SHOPPING CENTER



# SITE PLAN



SPACE	TENANT	AREA (SQ FT)
1	McDonald's	3,886
2	<b>AVAILABLE + DRIVE THRU</b>	<b>2,805</b>
3	CornerStone Dollar Store	3,045
4	Nail Creations	620
6	Goodwill	18,104
7	Keystone Klub	3,045
8	Great Clips	1,500
10	PA Wine and Spirits Store	2,228
11	Tobacco & Vape	2,000
12	DaVita Dialysis	6,150
13	Kylin Asian Fusion	2,414
14	Lush Laquer	2,000
15	Drayer Physical Therapy	2,500
16	H&R Block	1,500
17	Subway	1,900
18	Weis	46,912
20	<b>AVAILABLE</b>	<b>5,890</b>

**E. Main Street - ±17,000 VPD**



## Palmyra SHOPPING CENTER



# RETAIL MARKET AERIAL

**Palmyra SHOPPING CENTER**

**weis** **goddall** **McDonald's**

**Davita** FINE WINE & GOOD SPIRITS

**CVS/pharmacy**

**Rita's** **RITE AID**

**Wendy's** **MAVIS DISCOUNT TIRE**

**Advance Auto Parts**

## Tanger Outlets

**GAP** **OLD NAVY** **Starbucks**

**UNDER ARMOUR** **RALPH LAUREN**

**COACH** **chico's** **Talbots**

**Red Robin**  
GOURMET BURGERS AND MORE

**Wendy's**

**BW Best Western PLUS**

**ANYTIME FITNESS**

**Red Roof Inn**

**Shell**

**Hampton Inn**

**COUNTRY INNS & SUITES**

**SHERWIN-WILLIAMS**

**HERSHEY PARK**

**Northside Commons**

**REDNER'S** **DOLLAR TREE** **SUBWAY** **jbt**

## Hershey Towne Square

**PRIMANTI BROS.** **Jenny Holm's** **Starbucks**

**tropical CAFE** **FIRST WATCH** **BEER JERKY**

**UNITED STATES POST OFFICE** **IRON HILL BREWERY & RESTAURANT**

**DUNKIN'**

# Palmyra SHOPPING CENTER

# Bennett Williams

COMMERCIAL REAL ESTATE

## OUR LOCATIONS:

### YORK OFFICE:

3528 Concord Rd.  
York, PA 17402

### LANCASTER OFFICE:

150 Farmington Lane, Suite 201  
Lancaster, PA 17601

### EXTON OFFICE:

1 E. Uwchlan Ave.  
Suite 409, Exton, PA 19341

### WILLIAMSPORT OFFICE:

1000 Commerce Park Dr, Suite 310  
Williamsport, PA 17701

### WEST CHESTER OFFICE:

107 E Chestnut St, Suite 107  
West Chester, PA 19380

### NEW JERSEY OFFICE:

236 E. Route 38, Suite 130  
Moorestown, NJ 08057

## LISTING AGENTS:



### Blake Shaffer

BShaffer@bennettwilliams.com



### Ashlee Lehman

ALehman@bennettwilliams.com



### Brad Rohrbaugh

BRohrbaugh@bennettwilliams.com



### Chad Stine

CStine@bennettwilliams.com

### CONTACT US

717.843.5555 | [www.bennettwilliams.com](http://www.bennettwilliams.com)

LANDLORD  
REPRESENTATION

TENANT  
REPRESENTATION

INVESTMENT  
SALES

PROPERTY  
MANAGEMENT



## About Bennett Williams

Since its founding in 1956, Bennett Williams Commercial, Inc. has offered full Commercial Real Estate services to the Central Pennsylvania region and beyond. We have served thousands of commercial, industrial and retail clients as we have grown in size and reputation. With our team of both experienced and knowledgeable executives as well as young and energetic professionals, we have the team to handle any commercial real estate need.

Bennett Williams is a member of the Retail Brokers Network (RBN), a partnership of the best regional retail brokerage firms servicing all of the major markets across the United States. Our affiliates are handpicked ensuring that our clients receive top quality service and representation in any market they need help in, with 61 offices across 65+ markets and 700+ members.

