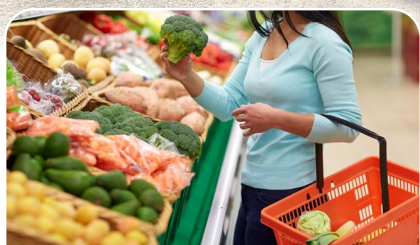


AVAILABLE FOR LEASE

Halifax Plaza

3761-3777 Peters Mtn. Rd. | Halifax, PA 17032

Bennett Williams
COMMERCIAL REAL ESTATE



JOIN RETAILERS



GIANT



FINE WINE & GOOD SPIRITS



verizon

Halifax Plaza

3761-3777 Peters Mtn. Rd. | Halifax, PA 17032

PROJECT OVERVIEW

Halifax Plaza is a 51,510 square foot anchored grocery center in Halifax, PA. The shopping center is located along Peters Mountain Road (Route 147), which is the market's retail corridor. The current tenant lineup includes Giant Grocery, Rite Aid Pharmacy, PA Wine & Spirits, Verizon Wireless, and Drayer Physical Therapy, just to name a few.

MAJOR RETAILERS

Giant - 32,000 SF

Rite Aid - 7,930 SF

PA Wine and Spirits - 2,880 SF

AVAILABLE SPACE

± 2,036 SF

GIANT



FINE WINE & GOOD SPIRITS

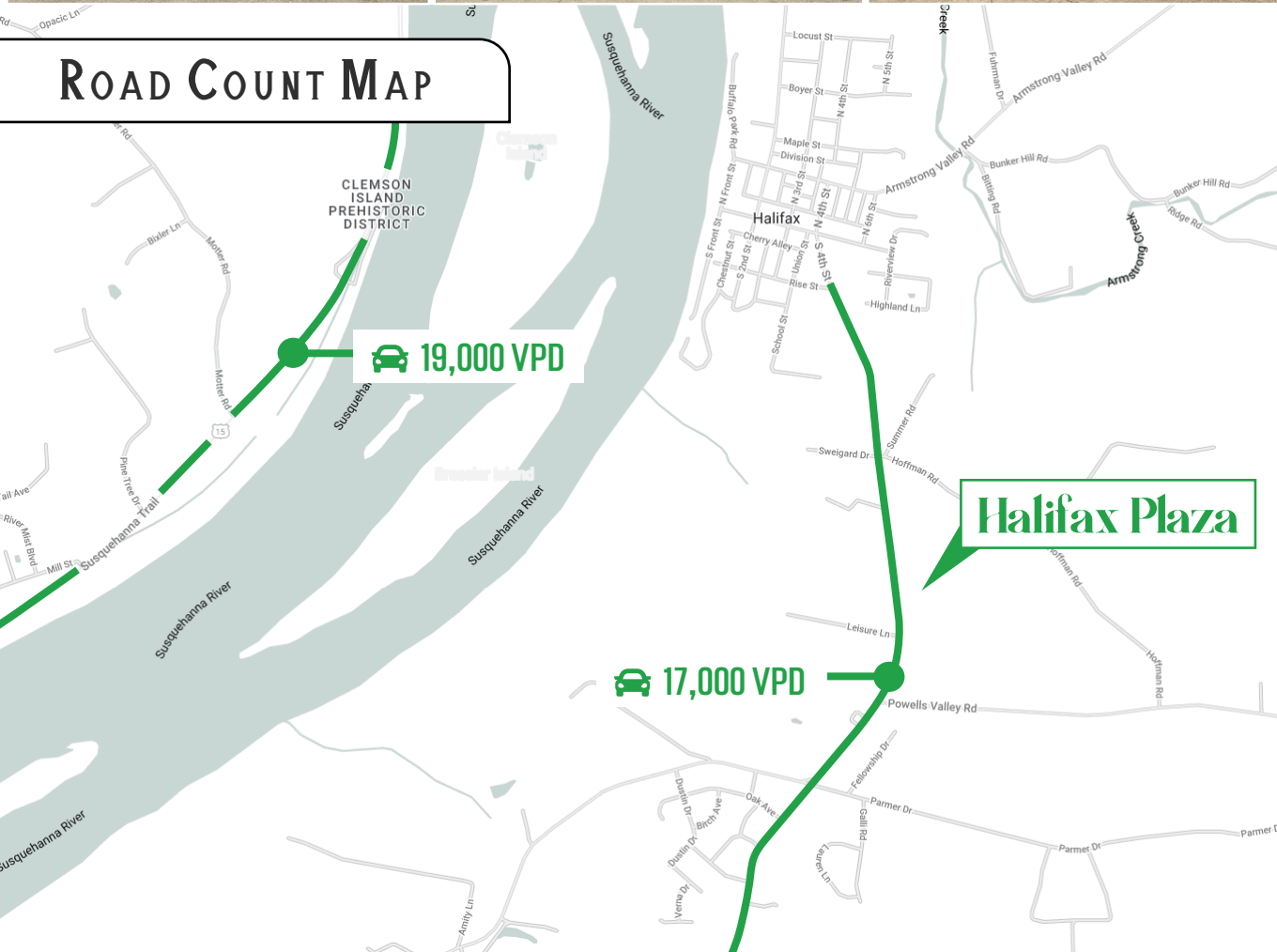


PROPERTY LOCATION

Halifax Plaza is ideally positioned on Route 147, making it easily accessible from surrounding markets within a 20-mile radius of the center. Major retailers in the area include Dollar General, McDonald's, True Value, Sheetz, and many others. Daily traffic is also due to Halifax High School (295 students) and Halifax Elementary School (564 students), which are right down the road.



ROAD COUNT MAP



TRADE AREA

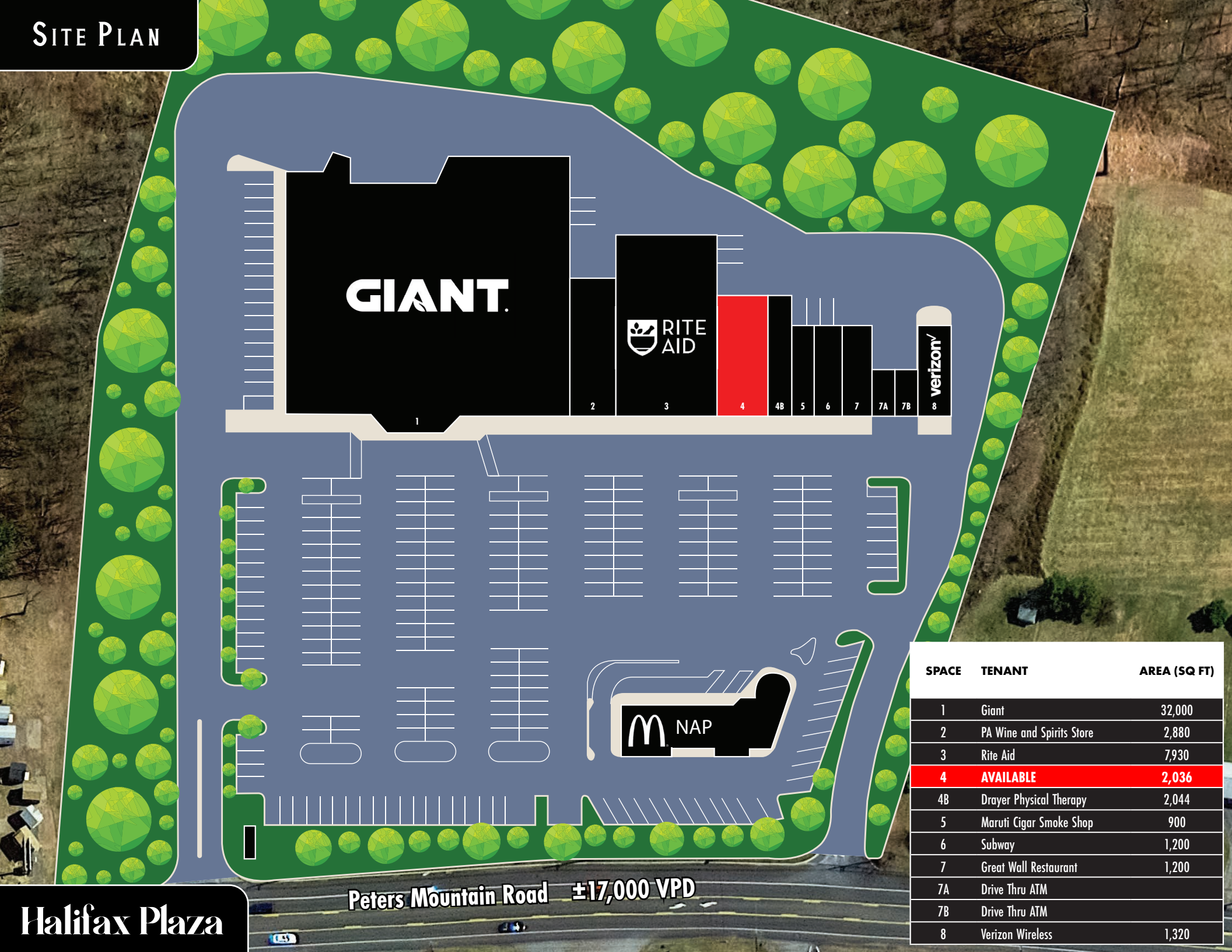
Adding to the stability of the market are the 10-mile radius and 20-minute drive time demographics. Within a 20-minute drivetime, you will find 25,411 people in 10,298 households with an average annual income of \$83,913. The 10-mile radius demographics are even stronger, showing 356,812 people in 23,216 households with an average annual income of \$92,636. The area daily traffic is also attributed to the +/- 1,800 businesses and +/- 15,200 employees in the general area.

DEMOGRAPHICS	1 MILES	5 MILES	10 MILES
POPULATION	1,231	8,407	56,462
TOTAL EMPLOYEES	373	1,513	15,163
TOTAL HOUSEHOLDS	485	3,314	23,196
AVG HHI	\$77,952	\$86,779	\$92,645

Halifax Plaza

3761-3777 Peters Mtn. Rd. | Halifax, PA 17032

SITE PLAN



Halifax Plaza

Halifax Area School District
295 Students

DOLLAR GENERAL

True Value
Help Is Just Around The Corner.



Halifax Plaza

GIANT RITE AID

Drayer verizon

FINE WINE & GOOD SPIRITS



TRUIST

SHEETZ

Since its founding in 1956, Bennett Williams Commercial, Inc. has offered full Commercial Real Estate services to the Central Pennsylvania region and beyond. We have served thousands of commercial, industrial and retail clients as we have grown in size and reputation. With our team of both experienced and knowledgeable executives as well as young and energetic professionals, we have the team to handle any commercial real estate need.

Our Retail Leasing Team provides top notch retail leasing services for all categories of retail real estate, whether institutional or local/regional, throughout the Central Pennsylvania landscape. We offer our vast knowledge, expertise and advanced network to leverage our long-standing relationship, to benefit your Investment.

AGENTS:

BLAKE SHAFFER

bshaffer@bennettwilliams.com

ASHLEE LEHMAN

alehman@bennettwilliams.com

BRAD ROHRBAUGH

brohrbaugh@bennettwilliams.com

CHAD STINE

cstine@bennettwilliams.com

Phone: 717.843.5555

www.bennettwilliams.com

OUR LOCATIONS:

YORK OFFICE:

3528 Concord Rd.
York, PA 17402

LANCASTER OFFICE:

2173 Embassy Dr, Suite 201
Lancaster, PA 17601

EXTON OFFICE:

1 E. Uwchlan Ave.
Suite 409, Exton, PA 19341

NJ OFFICE:

309 Fellowship Rd, Suite 200
Mt. Laurel, NJ 08054

COMMERCIAL BROKERAGE. **REDEFINED.**

Information shown is purported to be from reliable sources. No representation is made to the accuracy thereof, and is submitted subject to errors, omissions, change in price, prior sale, withdrawal without notice, or other conditions.