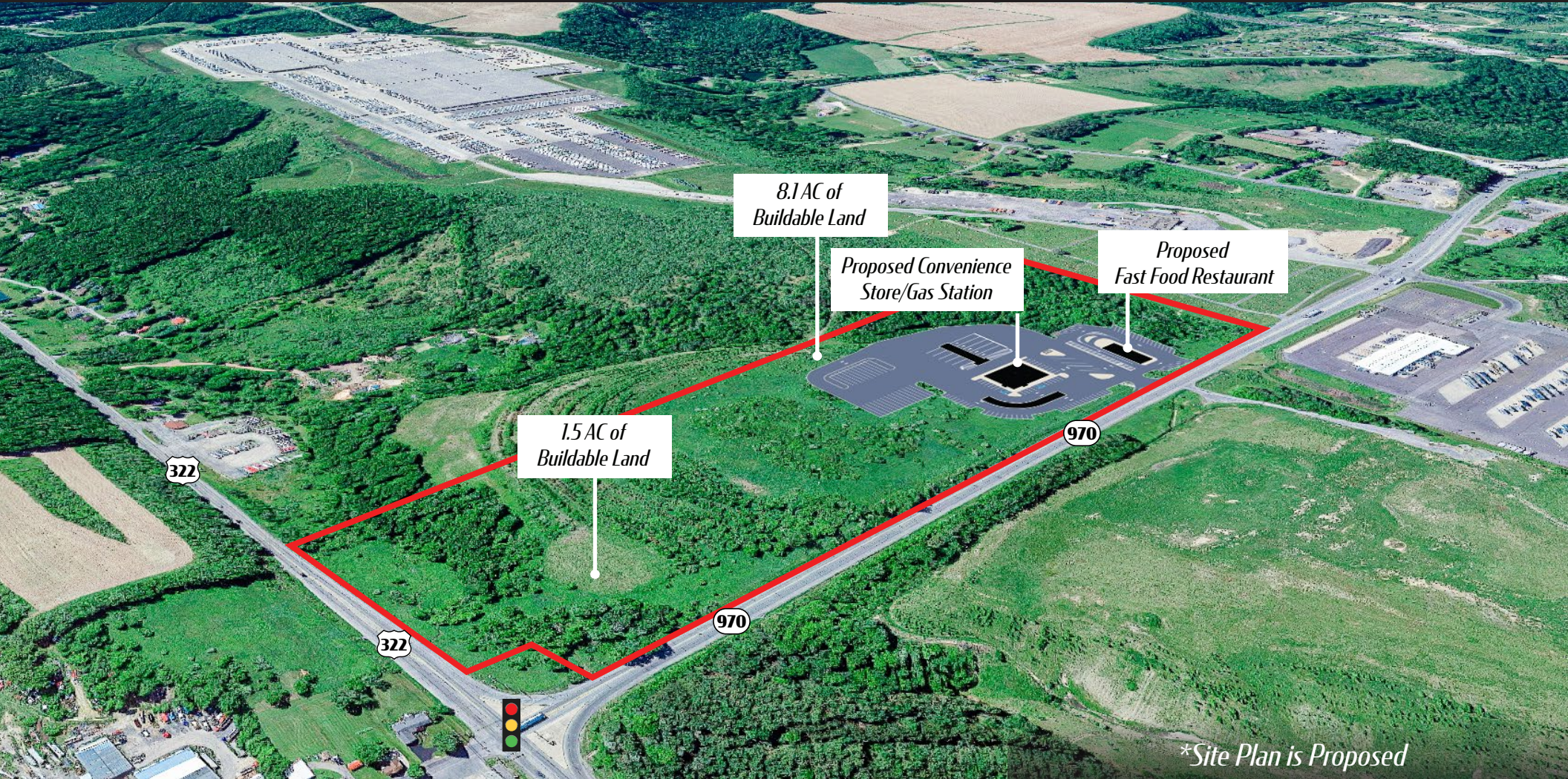


For Sale

US 322 & PA 970

**±1.5 - 38.3 AC
Land**



**Site Plan is Proposed*



Kandy Weader
 For Leasing Information: 717.843.5555 | Learn more online at www.bennettwilliams.com



COMMERCIAL BROKERAGE. *Redefined.*

US 322 & PA 970

Woodland, PA 16881



For Sale
±1.5 - 38.3 AC

Property Highlights

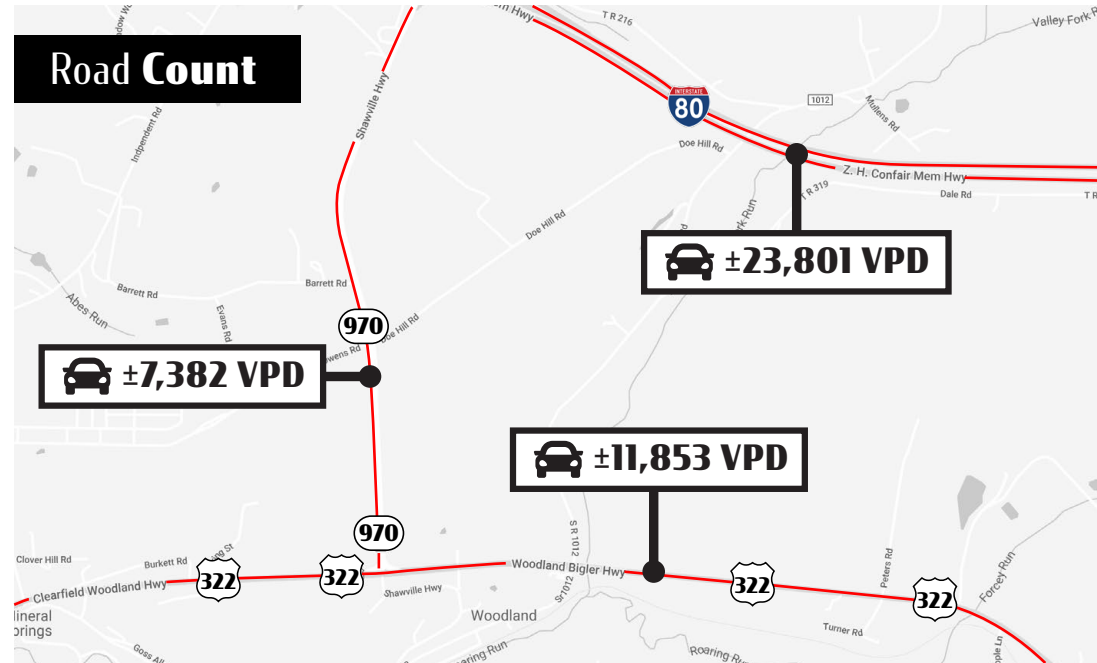
- 1.5 - 38.3 acres off I-80
- 2 buildable areas at 1.5 & 8.1 acres
- Mostly rolling, rectangle lot
- On the signalized corner of US 322 & PA 970
- Between Philipsburg and Clearfield
- Neighbors a convenience store, XPO Logistics, and Wal-mart Distribution Center
- Not zoned, so perfect for retail, industrial, office

Location Overview

The lot is in Woodland, Bradford Township, Clearfield, PA between Philipsburg and Clearfield on the south side of I-80. The parcel is on the busy intersection of US 322 with 11,853 VPD and PA 970 with 7,382 VPD.

Project Overview

Development opportunity on 38.03 acres just off exit 123 of I-80 in Woodland, PA near Clearfield. There are 2 distinct buildable areas (8.1 & 5.5 acres) on the large lot. The mostly rolling, rectangular parcel is on the signalized corner of US 322 and PA 970, which is across the street from Gio's Convenience Store, neighbors the Wal-Mart Distribution Center, and down the road from the PA State Police Barracks and XPO Logistics. The parcel is not zoned, and it would be a good location for a convenience store, retail store, bank, fast food restaurant, office, or warehouse.



DEMOGRAPHICS	3 MILE	5 MILE	10 MILE
TOTAL POPULATION	2,667	9,954	35,012
TOTAL EMPLOYEES	2,233	8,358	29,627
AVERAGE HHI	\$73,109	\$56,947	\$68,353
TOTAL HOUSEHOLDS	1,059	4,196	14,441

TRAFFIC COUNTS: PA 970 ± 7,382 VPD | US 322 ± 11,853 VPD



Kandy Weader

For Leasing Information: 717.843.5555 | Learn more online at www.bennettwilliams.com

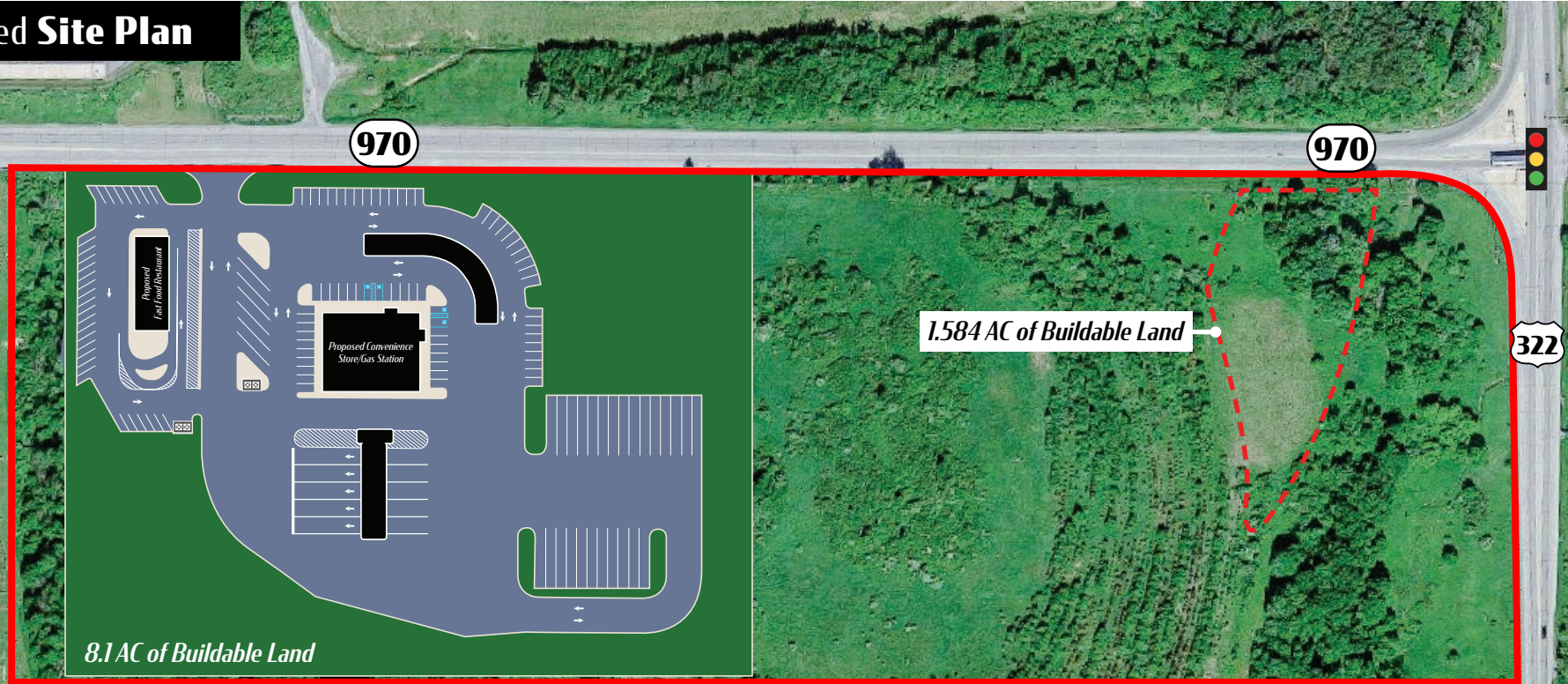


COMMERCIAL BROKERAGE. *Redefined.*

US 322 & PA 970
Woodland, PA 16881

For Sale
±1.5 - 38.3 AC

Proposed Site Plan



Kandy Weader
For Leasing Information: 717.843.5555 | Learn more online at www.bennettwilliams.com



COMMERCIAL BROKERAGE. *Redefined.*

US 322 & PA 970

Woodland, PA 16881



For Sale
±1.5 - 38.3 AC

Market Overview



Kandy Weader

For Leasing Information: 717.843.5555 | Learn more online at www.bennettwilliams.com

ACTIVE MEMBER OF:
RETAIL BROKERS NETWORK

COMMERCIAL BROKERAGE. *Redefined.*

About Bennett Williams



Since its founding in 1956, Bennett Williams Commercial, Inc. has offered full Commercial Real Estate services to the Central Pennsylvania region and beyond. We have served thousands of commercial, industrial and retail clients as we have grown in size and reputation. With our team of both experienced and knowledgeable executives as well as young and energetic professionals, we have the team to handle any commercial real estate need.

At Bennett Williams, your investments are always in good hands. Our retail Investment sales group provides top notch investment sales services for all categories of retail investments for both buyers and sellers alike, whether institutional or local, throughout the Central Pennsylvania landscape. Whether the asset is a single or multi-tenant, we pride ourselves in going above and beyond the expectations of the client to achieve maximum results. With over 60 years under our belt, and over 25 licensed real estate professionals, we possess the knowledge, experience, and dedication trusted by many in the investment sales segment of the industry.



Bennett Williams is a member of the Capital Markets Real Estate Network, a nationwide network of professionals dedicated to, and specializing in the capital markets segment of commercial real estate. CMRE is comprised of the most highly-qualified, best-experienced independent Capital Market real estate professionals.



LISTING AGENTS:

Kandy Weader

kweader@bennettwilliams.com

OUR LOCATIONS:

YORK OFFICE:

3528 Concord Rd.
York, PA 17402

EXTON OFFICE:

1 E. Uwchlan Ave.
Suite 409, Exton, PA 19341

WILLIAMSPORT OFFICE:

1000 Commerce Park Dr, Suite 310
Williamsport, PA 17701

LANCASTER OFFICE:

150 Farmington Lane
Lancaster, PA 17601

NEW JERSEY OFFICE:

236 E. Route 38, Suite 130
Moorestown, NJ 08057

CONTACT US

717.843.5555
www.bennettwilliams.com

