

±4,422 SF

# 4515 JONESTOWN ROAD

For Lease

Harrisburg, PA 17111



Jonestown Road  
±37,000 VPD

## Property Overview

4515 Jonestown Road is a 4,422 square foot freestanding building in Harrisburg, PA. This property is ideally positioned on one of the most sought-after retail corridors in Central PA, which is also home to major retailers like Target, Hobby Lobby, Costco, and HomeGoods, just to name a few. The site benefits from ample parking, pylon signage, easy access, and excellent visibility and exposure to the market.

Nearby



HOBBY LOBBY

COSTCO WHOLESALE



HomeGoods



Blake Shaffer | Ashlee Lehman | Brad Rohrbaugh | Chad Stine  
For Leasing Information: 717.843.5555 | Learn more online at [www.bennettwilliams.com](http://www.bennettwilliams.com)



COMMERCIAL BROKERAGE. *Redefined.*



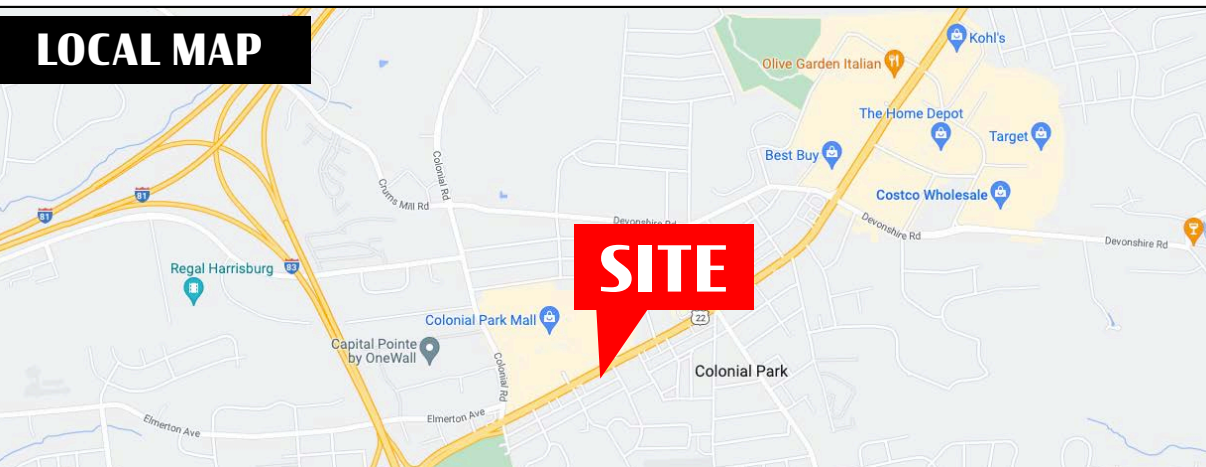
# 4515 JONESTOWN ROAD

Harrisburg, PA 17111

±4,422 SF  
**AVAILABLE**

*For Lease*

## LOCAL MAP

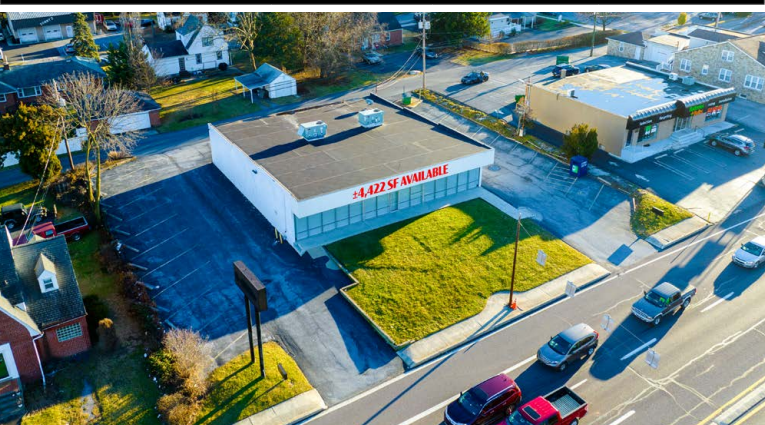


DEMOGRAPHICS	1 MILE	3 MILE	5 MILE
TOTAL POPULATION	79,599	172,547	255,688
TOTAL EMPLOYEES	44,623	134,921	173,271
AVERAGE HHI	\$78,652	\$77,139	\$84,219
TOTAL HOUSEHOLDS	33,215	71,030	106,440

### TRAFFIC COUNTS:

**Jonestown Rd ± 37,000 VPD | I-83 ± 99,000 VPD**

## AVAILABLE SPACES



**Blake Shaffer | Ashlee Lehman | Brad Rohrbaugh | Chad Stine**  
For Leasing Information: 717.843.5555 | Learn more online at [www.bennettwilliams.com](http://www.bennettwilliams.com)



COMMERCIAL BROKERAGE. *Redefined.*



4515 JONESTOWN ROAD  
Harrisburg, PA 17111

±4,422 SF  
**AVAILABLE**

*For Lease*

## SURROUNDING MARKET

### Colonial Commons



Marshall's  
**JOANN**



**HOBBY LOBBY**

ULTA  
BEAUTY

EVERY SEASON STARTS AT  
**DICK'S**  
SPORTING GOODS

OLD NAVY

**FIVE GUYS**  
BURGERS and FRIES  
**five BELOW**

noodles  
& COMPANY

Be  
**HomeGoods**  
Happy



**xfinity**

**DOLLAR TREE**

### Paxton Towne Center

**COSTCO**  
WHOLESALE



Michael's  
**KOHL'S**

**BED BATH & BEYOND**

**petco**

**Party City**

**BAM!**  
BOOKS-A-MILLION

**Red Robin**  
GOURMET BURGERS and BEERS

**Panera**  
BREAD®

### Colonial Park Mall

*Boscov's*



**LONGHORN**  
STEAKHOUSE



**MOUNTZ**  
JEWELERS

Jonestown Road - #37,000 VPD

**meineke**  
car care centers | On with life.

ignite your smile  
**Spark**  
ORTHODONTICS



Blake Shaffer | Ashlee Lehman | Brad Rohrbaugh | Chad Stine  
For Leasing Information: 717.843.5555 | Learn more online at [www.bennettwilliams.com](http://www.bennettwilliams.com)

ACTIVE MEMBER OF:  
**RETAIL** BROKERS  
NETWORK

COMMERCIAL BROKERAGE. *Redefined.*



4515 JONESTOWN ROAD  
Harrisburg, PA 17111

±4,422 SF  
**AVAILABLE**

*For Lease*

**SITE PLAN**

**Jonestown Road - ±37,000 VPD**

**Enders Ave**

*Available*  
±4,422 SF



**Blake Shaffer | Ashlee Lehman | Brad Rohrbaugh | Chad Stine**  
For Leasing Information: 717.843.5555 | Learn more online at [www.bennettwilliams.com](http://www.bennettwilliams.com)

ACTIVE MEMBER OF:  
**RETAIL** BROKERS  
NETWORK

COMMERCIAL BROKERAGE. *Redefined.*



# 4515 JONESTOWN ROAD

Harrisburg, PA 17111

±4,422 SF  
**AVAILABLE**

*For Lease*

## MARKET AERIAL

### Shoppes At Susquehanna Marketplace



### Colonial Commons



BB&T



POPEYES

**SITE**

### Colonial Park Mall



### Paxton Square



### Paxton Towne Center



### Harrisburg East SC



Blake Shaffer | Ashlee Lehman | Brad Rohrbaugh | Chad Stine  
For Leasing Information: 717.843.5555 | Learn more online at [www.bennettwilliams.com](http://www.bennettwilliams.com)



COMMERCIAL BROKERAGE. *Redefined.*



# About Bennett Williams



Since its founding in 1956, Bennett Williams Commercial, Inc. has offered full Commercial Real Estate services to the Central Pennsylvania region and beyond. We have served thousands of commercial, industrial and retail clients as we have grown in size and reputation. With our team of both experienced and knowledgeable executives as well as young and energetic professionals, we have the team to handle any commercial real estate need.

At Bennett Williams, your investments are always in good hands. Our retail Investment sales group provides top notch investment sales services for all categories of retail investments for both buyers and sellers alike, whether institutional or local, throughout the Central Pennsylvania landscape. Whether the asset is a single or multi-tenant, we pride ourselves in going above and beyond the expectations of the client to achieve maximum results. With over 60 years under our belt, and over 25 licensed real estate professionals, we possess the knowledge, experience, and dedication trusted by many in the investment sales segment of the industry.



Bennett Williams is a member of the Capital Markets Real Estate Network, a nationwide network of professionals dedicated to, and specializing in the capital markets segment of commercial real estate. CMRE is comprised of the most highly-qualified, best-experienced independent Capital Market real estate professionals.

## LISTING AGENTS:

**Blake Shaffer**

[bshaffer@bennettwilliams.com](mailto:bshaffer@bennettwilliams.com)

**Ashlee Lehman**

[alehman@bennettwilliams.com](mailto:alehman@bennettwilliams.com)

**Brad Rohrbaugh**

[brohrbaugh@bennettwilliams.com](mailto:brohrbaugh@bennettwilliams.com)

**Chad Stine**

[cstine@bennettwilliams.com](mailto:cstine@bennettwilliams.com)

## OUR LOCATIONS:

### YORK OFFICE:

3528 Concord Rd.

York, PA 17402

### LANCASTER OFFICE:

2173 Embassy Dr.

Lancaster, PA 17603

### EXTON OFFICE:

1 E. Uwchlan Ave.

Suite 409, Exton, PA 19341

### NEW JERSEY OFFICE:

236 E. Route 38, Suite 130

Moorestown, NJ 08057

### CONTACT US

717.843.5555

[www.bennettwilliams.com](http://www.bennettwilliams.com)

