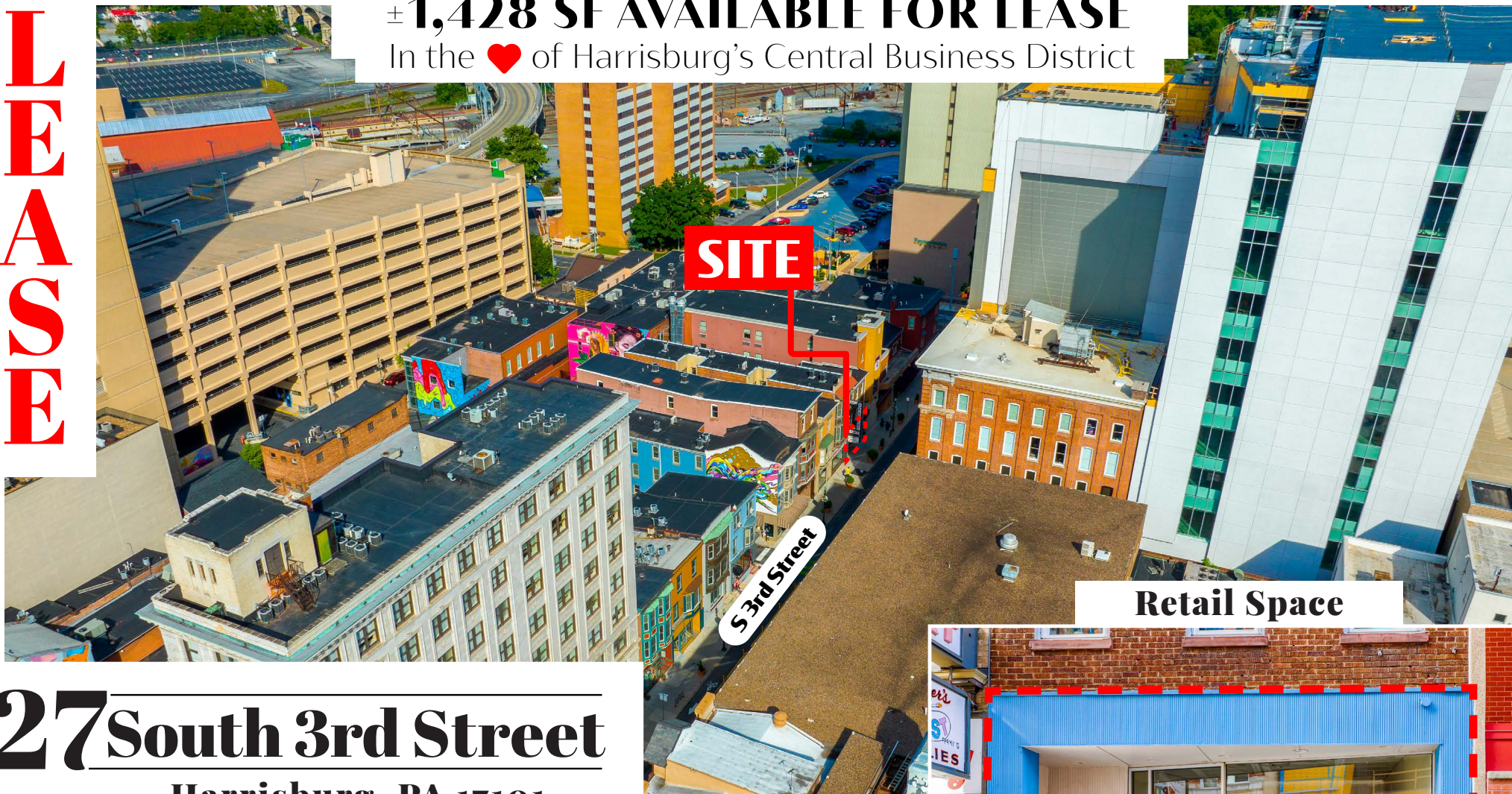


LEASE

±1,428 SF AVAILABLE FOR LEASE
In the ♥ of Harrisburg's Central Business District



27 South 3rd Street

Harrisburg, PA 17101

27 South Third Street is a 1,428 square foot retail space located on South Third Street in the heart of Harrisburg's central business district. The property is located one block away from Strawberry Square and directly across the street from the new Harrisburg University Health Science Education Center. In addition, the site is within close proximity to UPMC Hospital, Hilton Harrisburg, Crowne Plaza, Whitaker Center, county and federal courthouses & Amtrak train station. The Capitol Complex is 3 blocks away from the site with an approx. 30,000 person workforce within a five block radius as of 2019.



ASHLEE LEHMAN | BLAKE SHAFFER | BRAD ROHRBAUGH | CHAD STINE
For Leasing Information: 717.843.5555 | Learn more online at www.bennettwilliams.com



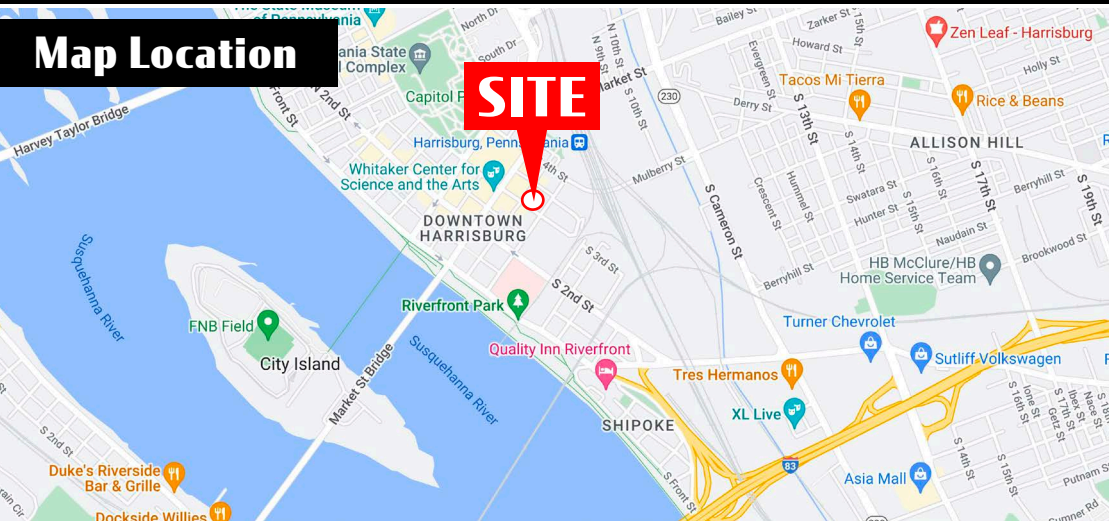
COMMERCIAL BROKERAGE. *Redefined.*

27 South 3rd Street

Harrisburg, PA 17101

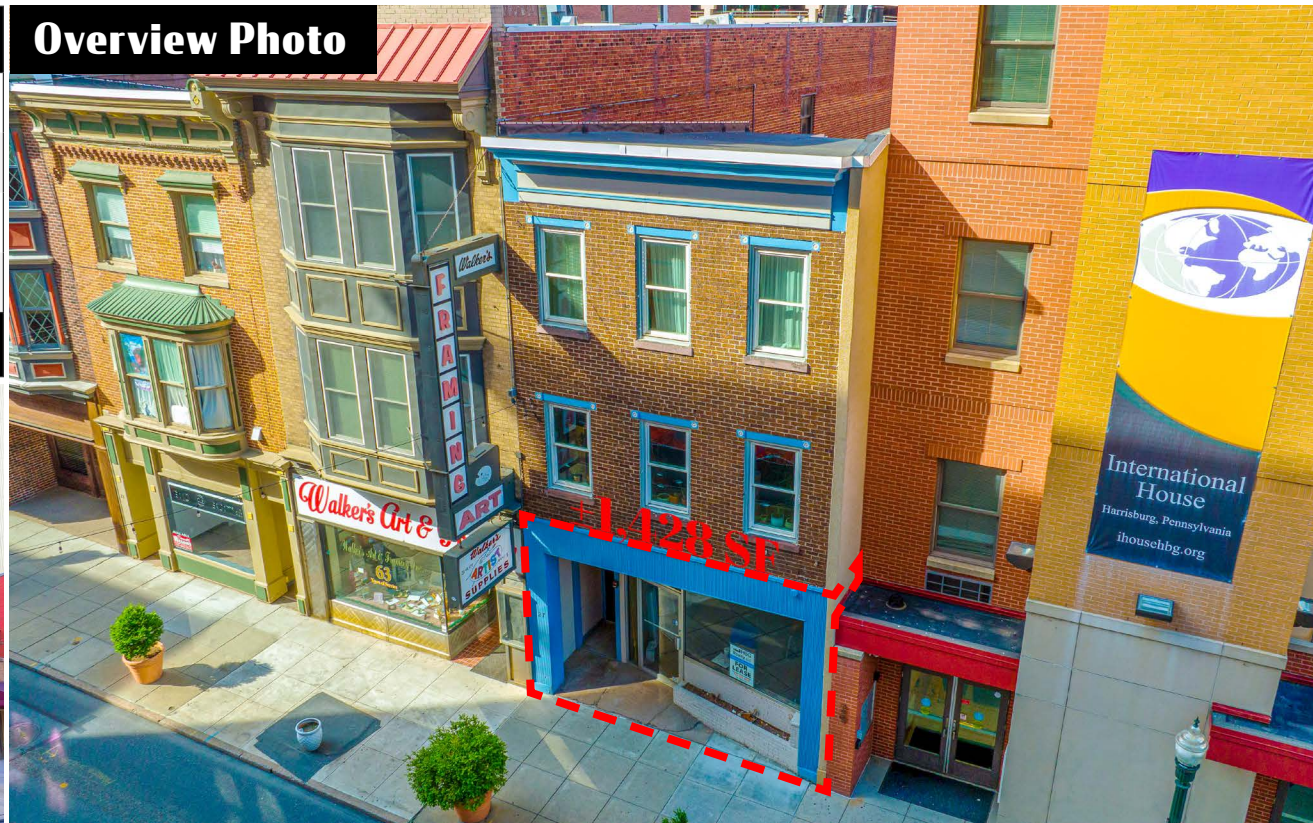
Location Overview

Map Location



DEMOGRAPHICS	3 MILE	5 MILE	7 MILE
TOTAL POPULATION	100,675	191,730	279,793
TOTAL EMPLOYEES	100,342	161,026	203,263
AVERAGE HHI	\$64,413	\$70,964	\$78,298
TOTAL HOUSEHOLDS	43,966	83,698	121,989
TRAFFIC COUNTS: S 3rd Street - 8,000 VPD Chestnut Street - 7,305 VPD			

Overview Photo



ASHLEE LEHMAN | BLAKE SHAFFER | BRAD ROHRBAUGH | CHAD STINE
For Leasing Information: 717.843.5555 | Learn more online at www.bennettwilliams.com



COMMERCIAL BROKERAGE. *Redefined.*

27 South 3rd Street

Harrisburg, PA 17101

Downtown Overview Aerial



MARKET AERIAL

Blue Mountain Commons

GIANT FINE WINE & GOOD SPIRITS petvalu
PNC BANK SUPERCUTS verizon

Blue Ridge Village

Joe's Dry Cleaners MOD Starbucks Panera
Great Clips CVS/pharmacy

Colonial Commons

HOBBY LOBBY DICK'S Sporting Goods Marshalls HomeGoods
JO-ANN fabric and craft stores Tuesday Morning Center for Women OLD NAVY
five BELOW ROSS shoes for less ULTA DAVIDS
LifeWay xfinity Visionworks
Starbucks Dunkin' Donuts noodles Olive Garden FIVE GUYS

Paxton Towne Center

Costco Wholesale Weis KOHL'S
Target Party City BAM! Michaels
LA Z BOY petco BED BATH & BEYOND
BOB'S FURNITURE the Vitamin Shoppe GameStop
SUPER CUTS RED ROBIN Patient First Panera

Colonial Park Mall

Boscov's SHOE CARNIVAL
CVS/pharmacy GameStop

Dauphin Plaza

PriceRite ASHLEY BIG LOTS! CRACK
LESLIE'S Pool Supplies DOLLAR GENERAL SUBWAY
metro PCS SALLY BEAUTY HAR BLOCK

Harrisburg East S.C.

GIANT CVS/pharmacy
VFC VALUE CITY FURNITURE Old Country Buffet MISSION BBQ

The Point SC

GIANT FINE WINE & GOOD SPIRITS Panera
Staples Burlington BARGAIN OUTLET
DOLLAR TREE AspenDental infinito's

Union Square SC

weis Gabe's Advance Auto Parts
MAJIK DOLLAR TREE
GameStop The UPS Store

High Pointe Commons

Target JCPenney Friendly's FIVE GUYS
Chili's Mac's GNC tropical CAFE
H&M CUMMINS LANE BRYANT
verizon GameStop orange theory

Swatara Square

GIANT CVS/pharmacy Starbucks
FINE WINE & GOOD SPIRITS MATTRESS Warehouse JoJo Maman O'Cash

SITE



DAUPHIN COUNTY OVERVIEW

Dauphin County's strategic location has been important throughout its rich history. It is a natural location for the state capital and is a critical hub for east coast transportation systems as a convergence point in the Boston-to-Richmond northeast corridor. Dauphin County serves as a major distribution hub for many companies servicing the east coast's top metropolitan markets. Harrisburg, the Capital City, is the urban nucleus of Dauphin County. It is the region's cultural, business and government center. The city has been the county seat since 1785 and Pennsylvania's capital since 1812.

DAUPHIN COUNTY STATS



POPULATION
278,299



MEDIAN HH INCOME
\$60,733



OF EMPLOYEES
141,549



MEDIAN AGE
39.6

TOP EMPLOYERS IN DAUPHIN COUNTY

1. State Government
2. Milton S Hershey Medical Center
3. The Hershey Company
4. Hershey Entertainment & Resorts Co
5. UPMC Pinnacle Hospitals
6. Federal Government
7. Pennsylvania State University
8. PHEAA
9. United Parcel Service Inc
10. TE Connectivity Corporation



PennState Health
Milton S. Hershey Medical Center



PennState



CUMBERLAND COUNTY OVERVIEW

Cumberland Valley's proximity to major east coast markets and regional seaports, and access to multiple air, rail and highway systems accelerates connections between businesses, suppliers and customers.

The County, located within the Cumberland Valley region of South Central Pennsylvania, has connections via Interstate 81, I-83, I-76 and US 11/15.

Cumberland Valley is also within a two-to-three hour drive of every major city on the Northeast Corridor. The close proximity to the state capital of Harrisburg offers many nearby amenities including the transportation hubs of the Harrisburg International Airport and Amtrak.

CUMBERLAND COUNTY STATS



POPULATION
249,328



MEDIAN HH INCOME
\$71,269



OF EMPLOYEES
127,941



MEDIAN AGE
40.6

TOP EMPLOYERS IN CUMBERLAND COUNTY

1. Federal Government
2. Giant Food Stores LLC
3. State Government
4. Amazon.com Services Inc
5. Chewy Inc
6. Penn State Health Holy Spirit Medical Center
7. Select Employment Services Inc
8. Cumberland Valley School District
9. Highmark Inc
10. Wal-Mart Associates Inc



ACCOLADES & COUNTY AWARDS

- ➡ Harrisburg-Carlisle area ranked top 10 Best Places for Millennial Homebuyers. (July 2019)
- ➡ Cumberland County ranked 4th most prosperous county in PA. (March 2019)
- ➡ Mechanicsburg ranks #4 in the state for Best Places to Retire. (October 2019)
- ➡ Cumberland Among Top Counties in Pennsylvania for Mortgage Approval. (Sept 2015)