

For Lease

2705 MacArthur Road

±1,200 SF

Whitehall, PA 18052



Property Overview

2705 MacArthur Road offers exceptional visibility along the Lehigh Valley's busiest retail corridor in MacArthur Road (±39,000 VPD). 2705 MacArthur Road presents a 1,200 square foot vacancy that sits on the outparcel to MacArthur Commons, Whitehall's premier Shopping Center. MacArthur Commons supports the following retailers, Walmart, Dick's Sporting Goods, Giant, Boot Barn, Petco, TJ Maxx and more! This is an excellent opportunity for a retailer to join the growing Whitehall retail market.

Surrounding Retailers

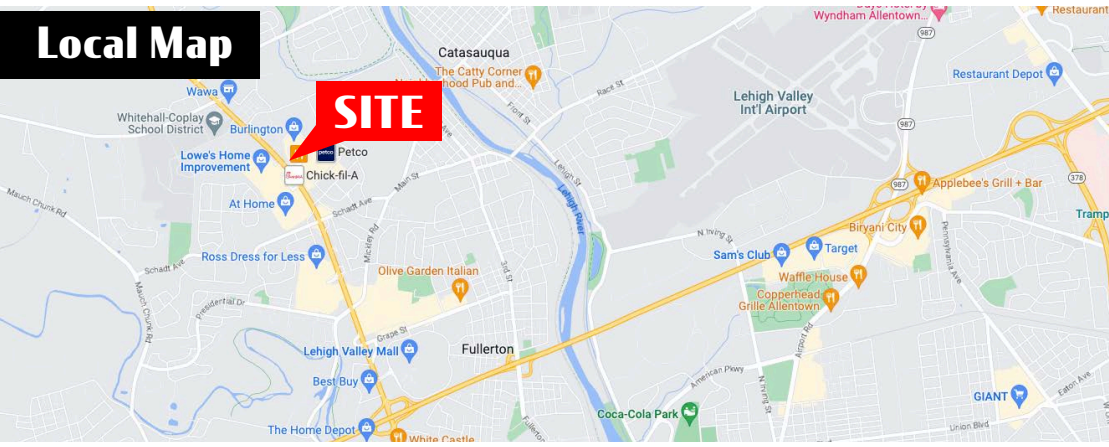


2705 MacArthur Road

Whitehall, PA 18052

For Lease

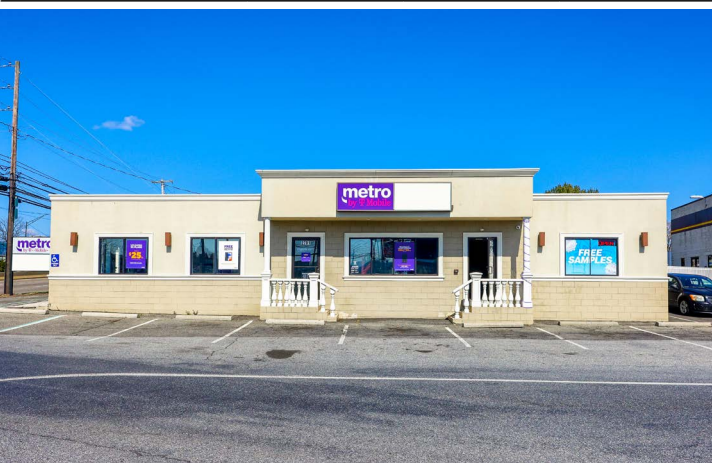
Local Map



DEMOGRAPHICS	1 MILE	3 MILE	5 MILE
TOTAL POPULATION	8,907	114,522	225,651
TOTAL EMPLOYEES	6,099	55,782	113,022
AVERAGE HHI	\$74,855	\$66,251	\$73,390
TOTAL HOUSEHOLDS	3,634	42,773	86,851

TRAFFIC COUNTS: MacArthur Rd ± 39,000 VPD

Surrounding Market



Cale Bruso | Ashlee Lehman | Adam Hagerman | Brad Rohrbaugh | Chad Stine
 For Leasing Information: 717.843.5555 | Learn more online at www.bennettwilliams.com



COMMERCIAL BROKERAGE. *Redefined.*

2705 MacArthur Road

Whitehall, PA 18052

For Lease

MARKET AERIAL



About Bennett Williams

Bennett Williams
COMMERCIAL REAL ESTATE

Since its founding in 1956, Bennett Williams Commercial, Inc. has offered full Commercial Real Estate services to the Central Pennsylvania region and beyond. We have served thousands of commercial, industrial and retail clients as we have grown in size and reputation. With our team of both experienced and knowledgeable executives as well as young and energetic professionals, we have the team to handle any commercial real estate need.

At Bennett Williams, your investments are always in good hands. Our retail Investment sales group provides top notch investment sales services for all categories of retail investments for both buyers and sellers alike, whether institutional or local, throughout the Central Pennsylvania landscape. Whether the asset is a single or multi-tenant, we pride ourselves in going above and beyond the expectations of the client to achieve maximum results. With over 60 years under our belt, and over 25 licensed real estate professionals, we possess the knowledge, experience, and dedication trusted by many in the investment sales segment of the industry.



Bennett Williams is a member of the Capital Markets Real Estate Network, a nationwide network of professionals dedicated to, and specializing in the capital markets segment of commercial real estate. CMRE is comprised of the most highly-qualified, best-experienced independent Capital Market real estate professionals.



LISTING AGENTS:

Cale Bruso

cbruso@bennettwilliams.com

Ashlee Lehman

alehman@bennettwilliams.com

Adam Hagerman

ahagerman@bennettwilliams.com

Brad Rohrbaugh

brohrbaugh@bennettwilliams.com

Chad Stine

cstine@bennettwilliams.com

OUR LOCATIONS:

YORK OFFICE:

3528 Concord Rd.
York, PA 17402

EXTON OFFICE:

1 E. Uwchlan Ave.
Suite 409, Exton, PA 19341

WILLIAMSPORT OFFICE:

1000 Commerce Park Dr, Suite 310
Williamsport, PA 17701

LANCASTER OFFICE:

2173 Embassy Dr.
Lancaster, PA 17603

NEW JERSEY OFFICE:

236 E. Route 38, Suite 130
Moorestown, NJ 08057

CONTACT US

717.843.5555
www.bennettwilliams.com

