

17 Covert Street

Kingston, PA 18704

For Sale



±0.1928 AC

AutoZone

TACO BELL

BURGER KING

Covert St

11

S Wyoming Ave - ±21,000 VPD

Property Overview

The property is a 0.1928 AC (8,400 SF) parking lot and is situated in the Borough of Kingston, County of Luzerne. The lot is zoned C2, a Community Business District, and has 24 parking spots.

Surrounding Retailers

LOWE'S **petco** **RITE AID**
MAR & KET **DUNKIN'**
BY PRICE CHOPPER **FINE WINE & GOOD SPIRITS**

BW COMMERCIAL Abe Khan | Blake Shaffer | Brad Rohrbaugh | Chad Stine
For Sale Information: 717.843.5555 | Learn more online at www.bennettwilliams.com

ACTIVE MEMBER OF:
RETAIL BROKERS NETWORK

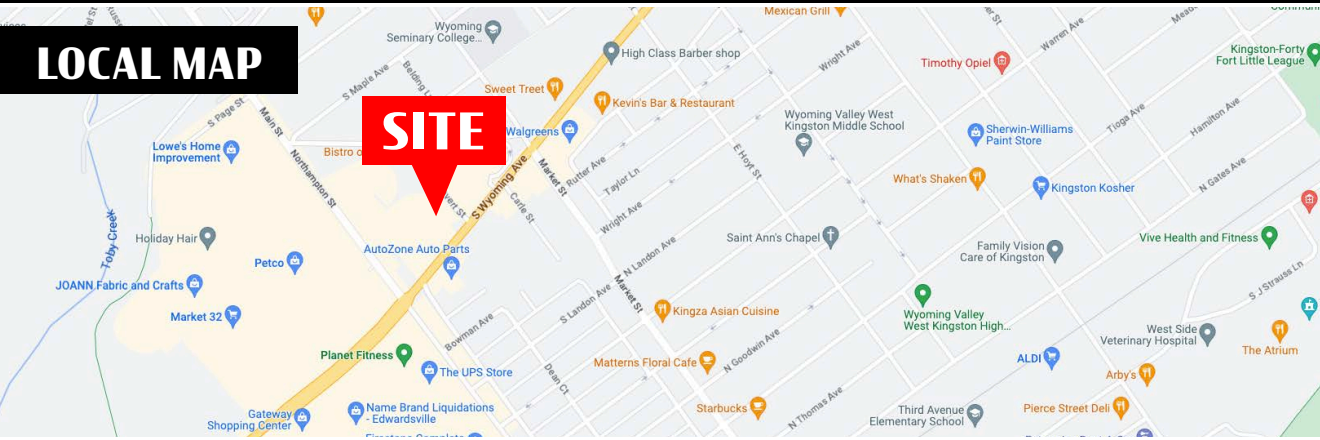
COMMERCIAL BROKERAGE. *Redefined.*

17 Covert Street

Kingston, PA 18704

For Sale

LOCAL MAP



DEMOGRAPHICS	1 MILE	3 MILE	5 MILE
TOTAL POPULATION	14,867	92,301	127,129
TOTAL EMPLOYEES	6,932	39,561	59,088
AVERAGE HHI	\$64,339	\$58,456	\$64,341
TOTAL HOUSEHOLDS	6,717	39,141	54,507

TRAFFIC COUNTS: **S Wyoming Ave** ± 21,000 VPD

SURROUNDING RETAIL



Abe Khan | Blake Shaffer | Brad Rohrbaugh | Chad Stine
 For Sale Information: 717.843.5555 | Learn more online at www.bennettwilliams.com



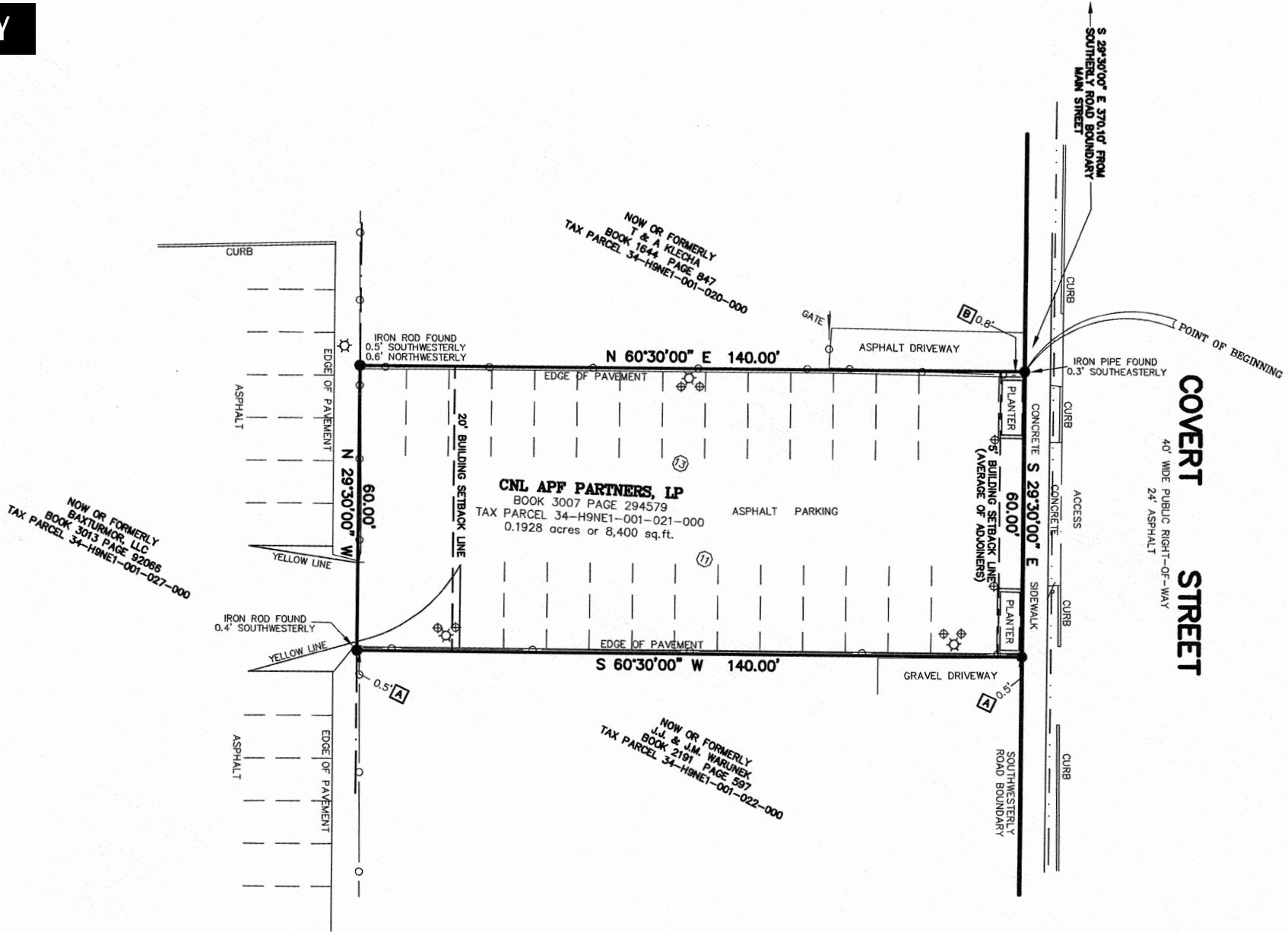
COMMERCIAL BROKERAGE. *Redefined.*

17 Covert Street

Kingston, PA 18704

For Sale

SURVEY



Abe Khan | Blake Shaffer | Brad Rohrbaugh | Chad Stine
For Sale Information: 717.843.5555 | Learn more online at www.bennettwilliams.com

ACTIVE MEMBER OF:
RETAIL BROKERS NETWORK

COMMERCIAL BROKERAGE. *Redefined.*

17 Covert Street

Kingston, PA 18704

For Sale

MARKET AERIAL



About Bennett Williams



Since its founding in 1956, Bennett Williams Commercial, Inc. has offered full Commercial Real Estate services to the Central Pennsylvania region and beyond. We have served thousands of commercial, industrial and retail clients as we have grown in size and reputation. With our team of both experienced and knowledgeable executives as well as young and energetic professionals, we have the team to handle any commercial real estate need.

At Bennett Williams, your investments are always in good hands. Our retail Investment sales group provides top notch investment sales services for all categories of retail investments for both buyers and sellers alike, whether institutional or local, throughout the Central Pennsylvania landscape. Whether the asset is a single or multi-tenant, we pride ourselves in going above and beyond the expectations of the client to achieve maximum results. With over 60 years under our belt, and over 25 licensed real estate professionals, we possess the knowledge, experience, and dedication trusted by many in the investment sales segment of the industry.



Bennett Williams is a member of the Capital Markets Real Estate Network, a nationwide network of professionals dedicated to, and specializing in the capital markets segment of commercial real estate. CMRE is comprised of the most highly-qualified, best-experienced independent Capital Market real estate professionals.

LISTING AGENTS:

Abe Khan

akhan@bennettwilliams.com

Blake Shaffer

bshaffer@bennettwilliams.com

Brad Rohrbaugh

brohrbaugh@bennettwilliams.com

Chad Stine

cstine@bennettwilliams.com

OUR LOCATIONS:

YORK OFFICE:

3528 Concord Rd.
York, PA 17402

LANCASTER OFFICE:

150 Farmington Lane
Lancaster, PA 17601

EXTON OFFICE:

1 E. Uwchlan Ave. Suite 409,
Exton, PA 19341

NEW JERSEY OFFICE:

236 E. Route 38, Suite 130
Moorestown, NJ 08057

WILLIAMSPORT OFFICE:

1000 Commerce Park Dr, Suite 310,
Williamsport, PA 17701

CONTACT US

717.843.5555
www.bennettwilliams.com

