

# Federal Court Professional Center

174 N Main Street | Dublin, PA 18917

*For Lease*



*Property Overview*

*Available*  
**±1,994 SF**

Office/medical space 1,994 Sf space available at Federal Court Professional Center. Professional office that is very visible on Main Street in Dublin Borough where there are 17,000 VPD directly in front of this property. The building has plenty of parking on site for all of the tenants in this professional building.

*Surrounding Retailers*



**Bill Hess**

For Leasing Information: 610.321.1111 | Learn more online at [www.bennettwilliams.com](http://www.bennettwilliams.com)



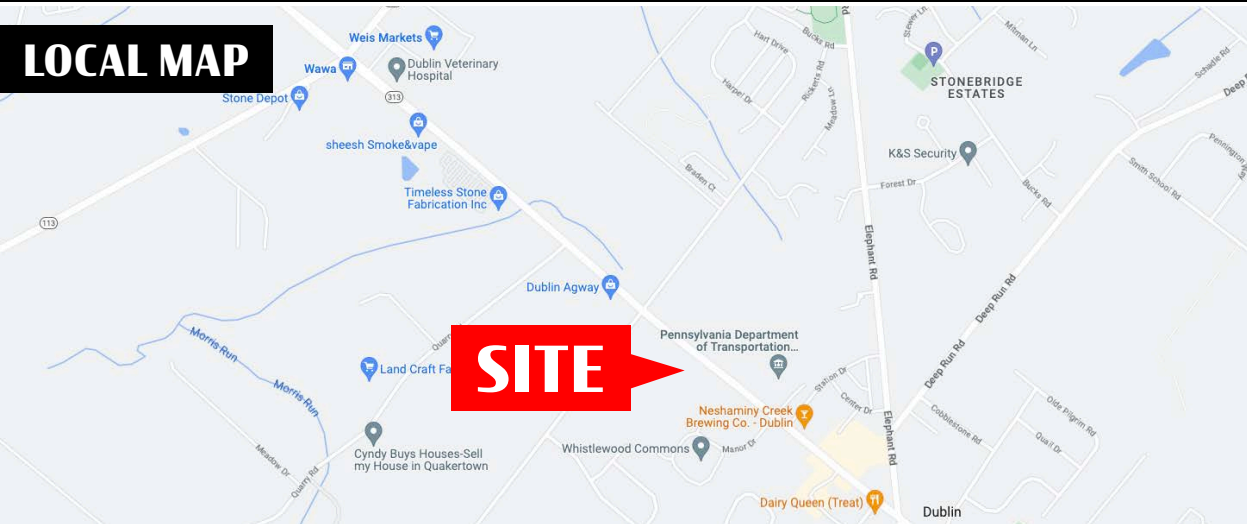
COMMERCIAL BROKERAGE. *Redefined.*



# Federal Court Professional Center

174 N Main Street | Dublin, PA 18917

*For Lease*



DEMOGRAPHICS	3 MILE	5 MILE	7 MILE
TOTAL POPULATION	13,628	48,571	110,872
TOTAL EMPLOYEES	2,606	12,050	61,928
AVERAGE HHI	\$135,852	\$134,989	\$133,503
TOTAL HOUSEHOLDS	5,091	18,183	42,263

TRAFFIC COUNTS: **S Dublin Pike** ± 17,000 VPD

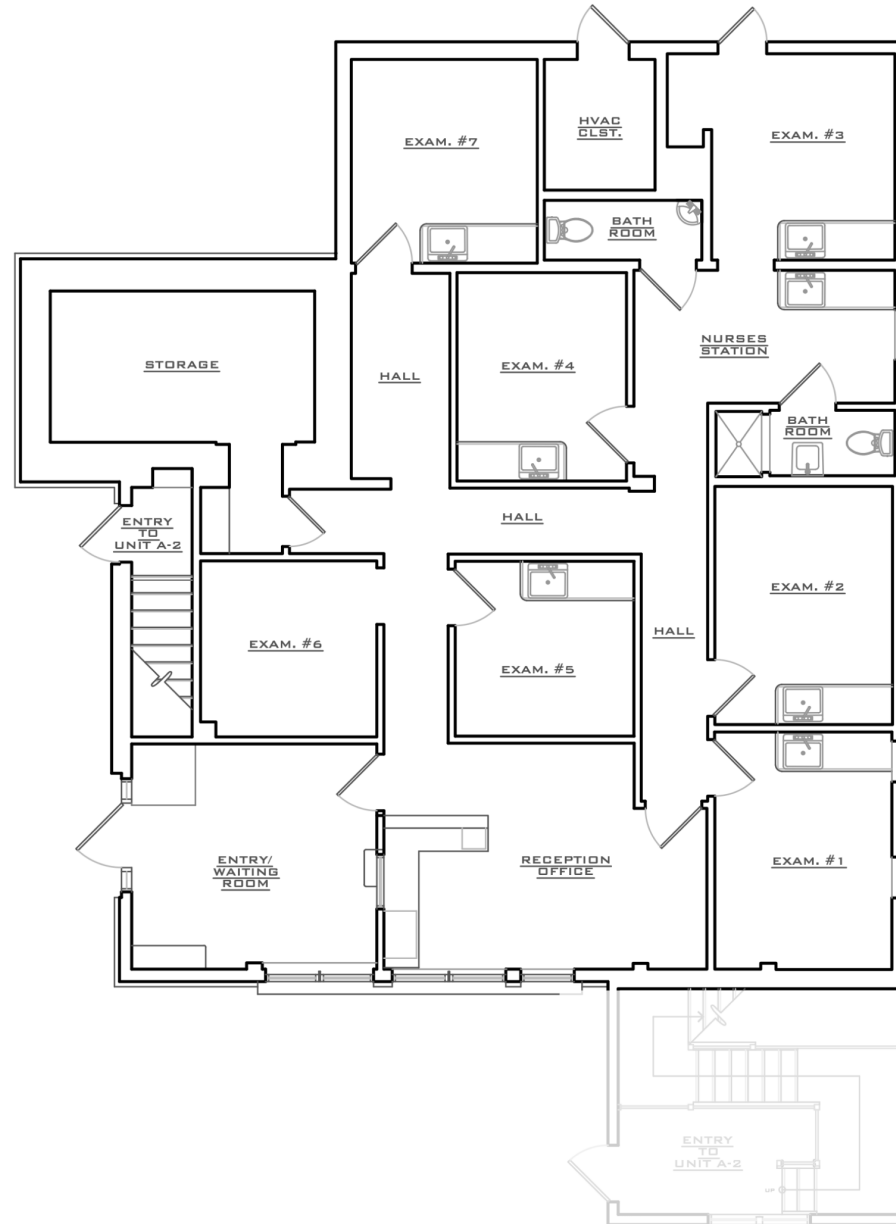


# Federal Court Professional Center

174 N Main Street | Dublin, PA 18917

*For Lease*

## FLOOR PLAN



Bill Hess

For Leasing Information: 610.321.1111 | Learn more online at [www.bennettwilliams.com](http://www.bennettwilliams.com)

ACTIVE MEMBER OF:  
**RETAIL** BROKERS NETWORK

COMMERCIAL BROKERAGE. *Redefined.*



# Federal Court Professional Center

174 N Main Street | Dublin, PA 18917

*For Lease*

## MARKET AERIAL



**weis**

**DOLLAR GENERAL**



**CVS**  
pharmacy™

**FINE WINE & GOOD SPIRITS**

**Wawa**

**Federal Court Professional Center**

 **Allstate**  
You're in good hands.

 **Penridge**  
Family Eye Care





# About Bennett Williams



Since its founding in 1956, Bennett Williams Commercial, Inc. has offered full Commercial Real Estate services to the Central Pennsylvania region and beyond. We have served thousands of commercial, industrial and retail clients as we have grown in size and reputation. With our team of both experienced and knowledgeable executives as well as young and energetic professionals, we have the team to handle any commercial real estate need.

At Bennett Williams, your investments are always in good hands. Our retail Investment sales group provides top notch investment sales services for all categories of retail investments for both buyers and sellers alike, whether institutional or local, throughout the Central Pennsylvania landscape. Whether the asset is a single or multi-tenant, we pride ourselves in going above and beyond the expectations of the client to achieve maximum results. With over 60 years under our belt, and over 25 licensed real estate professionals, we possess the knowledge, experience, and dedication trusted by many in the investment sales segment of the industry.



Bennett Williams is a member of the Capital Markets Real Estate Network, a nationwide network of professionals dedicated to, and specializing in the capital markets segment of commercial real estate. CMRE is comprised of the most highly-qualified, best-experienced independent Capital Market real estate professionals.



## LISTING AGENTS:

**Bill Hess**  
bhess@bennettwilliams.com

## OUR LOCATIONS:

**YORK OFFICE:**  
3528 Concord Rd.  
York, PA 17402

**EXTON OFFICE:**  
1 E. Uwchlan Ave. Suite 409,  
Exton, PA 19341

**WILLIAMSPORT OFFICE:**  
1000 Commerce Park Dr, Suite 310,  
Williamsport, PA 17701

**LANCASTER OFFICE:**  
150 Farmington Lane  
Lancaster, PA 17601

**NEW JERSEY OFFICE:**  
236 E. Route 38, Suite 130  
Moorestown, NJ 08057

**CONTACT US**  
717.843.5555  
[www.bennettwilliams.com](http://www.bennettwilliams.com)

