

# Memory Lane Plaza

1201 MEMORY LANE EXT. | YORK, PA | 17402

±1,500 - 10,500 SF  
FOR **LEASE**



Brad Rohrbaugh | Chad Stine

For Leasing Information: 717.843.5555 | Learn more online at [www.bennettwilliams.com](http://www.bennettwilliams.com)

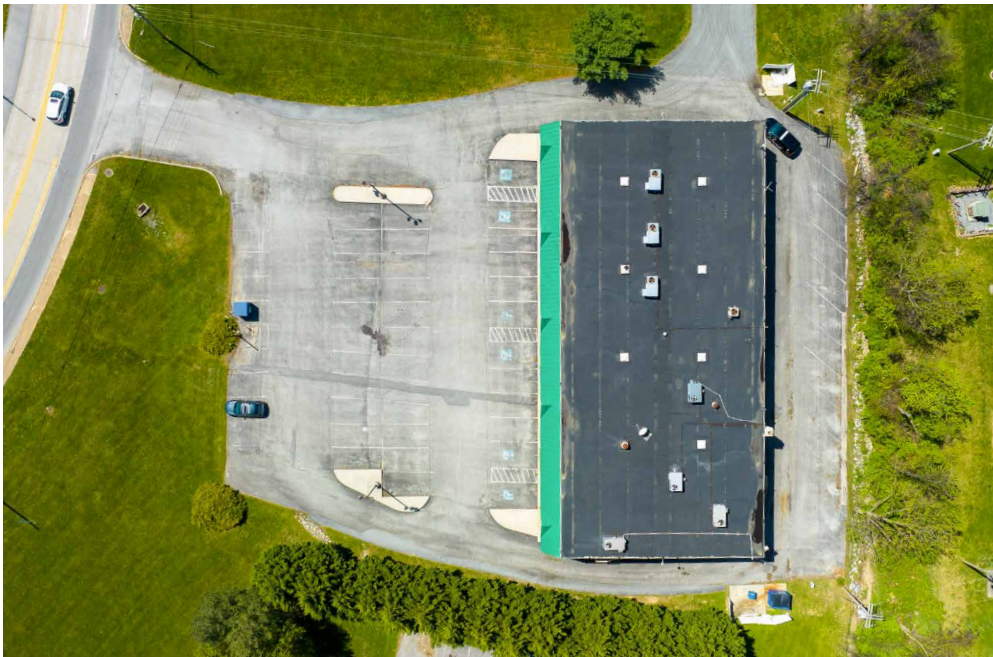


COMMERCIAL BROKERAGE. *Redefined.*



# Memory Lane Plaza

1201 MEMORY LANE EXT. | YORK, PA | 17402



## Property Highlights

- 1,500 - 10,500 SF Available
- Located along Whiteford Rd near Galleria Mall
- 1 acre pad site available at corner of Whiteford Rd & Memory Lane
- Excellent traffic counts and demographics
- Center sits at signalized intersection with access and visibility from Rt 30



DEMOGRAPHICS	1 MILE	3 MILE	5 MILE
TOTAL POPULATION	3,622	65,827	141,386
TOTAL EMPLOYEES	7,245	41,243	77,378
AVERAGE HHI	\$61,232	\$69,996	\$76,422
TOTAL HOUSEHOLDS	1,591	25,850	54,712
TRAFFIC COUNTS:			
Memory Lane ± 7,000 VPD   Rt 30 ± 49,000 VPD			



Brad Rohrbaugh | Chad Stine

For Leasing Information: 717.843.5555 | Learn more online at [www.bennettwilliams.com](http://www.bennettwilliams.com)



COMMERCIAL BROKERAGE. *Redefined.*



# Memory Lane Plaza

1201 MEMORY LANE EXT. | YORK, PA | 17402



Brad Rohrbaugh | Chad Stine

For Leasing Information: 717.843.5555 | Learn more online at [www.bennettwilliams.com](http://www.bennettwilliams.com)

ACTIVE MEMBER OF:  
**RETAIL** BROKERS NETWORK

COMMERCIAL BROKERAGE. *Redefined.*



# About Bennett Williams



Since its founding in 1956, Bennett Williams Commercial, Inc. has offered full Commercial Real Estate services to the Central Pennsylvania region and beyond. We have served thousands of commercial, industrial and retail clients as we have grown in size and reputation. With our team of both experienced and knowledgeable executives as well as young and energetic professionals, we have the team to handle any commercial real estate need.

At Bennett Williams, your investments are always in good hands. Our retail Investment sales group provides top notch investment sales services for all categories of retail investments for both buyers and sellers alike, whether institutional or local, throughout the Central Pennsylvania landscape. Whether the asset is a single or multi-tenant, we pride ourselves in going above and beyond the expectations of the client to achieve maximum results. With over 60 years under our belt, and over 25 licensed real estate professionals, we possess the knowledge, experience, and dedication trusted by many in the investment sales segment of the industry.



Bennett Williams is a member of the Capital Markets Real Estate Network, a nationwide network of professionals dedicated to, and specializing in the capital markets segment of commercial real estate. CMRE is comprised of the most highly-qualified, best-experienced independent Capital Market real estate professionals.

## LISTING AGENTS:

**Brad Rohrbaugh**

brohrbaugh@bennettwilliams.com

**Chad Stine**

cstine@bennettwilliams.com

## OUR LOCATIONS:

### YORK OFFICE:

3528 Concord Rd.  
York, PA 17402

### EXTON OFFICE:

1 E. Uwchlan Ave.  
Suite 409, Exton, PA 19341

### WILLIAMSPORT OFFICE:

1000 Commerce Park Dr, Suite 310  
Williamsport, PA 17701

### LANCASTER OFFICE:

150 Farmington Lane  
Lancaster, PA 17601

### NEW JERSEY OFFICE:

236 E. Route 38, Suite 130  
Moorestown, NJ 08057

### WEST CHESTER OFFICE:

107 E Chestnut St, Suite 1  
West Chester, PA 19380

### CONTACT US

717.843.5555 | [www.bennettwilliams.com](http://www.bennettwilliams.com)

