

# 9343 PA-61

SHAMOKIN, PA | 17866

± .71 AC  
FOR SALE/ LEASE



The pad located at **9343 PA-61 in Shamokin, PA** offers a fully approved pad for a quick-service restaurant. The parcel is strategically located next to the region's Walmart Supercenter, Aldi Supermarket, Mavis Discount Tire, Tractor Supply Company and the proposed Wawa! The property is for sale or lease and provides an excellent opportunity for any QSR or retailer looking to join the Shamokin market.



**Adam Hagerman | Cale Bruso | Brad Rohrbaugh | Chad Stine**  
For Leasing Information: 717.843.5555 | Learn more online at [www.bennettwilliams.com](http://www.bennettwilliams.com)



COMMERCIAL BROKERAGE. *Redefined.*

# 9343 PA-61

SHAMOKIN, PA | 17866

± .71 AC  
FOR SALE/LEASE



DEMOGRAPHICS	5 MILE	7 MILE	10 MILE
TOTAL POPULATION	28,179	37,491	52,685
TOTAL EMPLOYEES	6,269	8,173	11,876
AVERAGE HHI	\$68,627	\$73,280	\$78,579
TOTAL HOUSEHOLDS	11,558	15,398	21,434
TRAFFIC COUNTS: PA- 61 ± 10,000 VPD			



Adam Hagerman | Cale Bruso | Brad Rohrbaugh | Chad Stine

For Leasing Information: 717.843.5555 | Learn more online at [www.bennettwilliams.com](http://www.bennettwilliams.com)

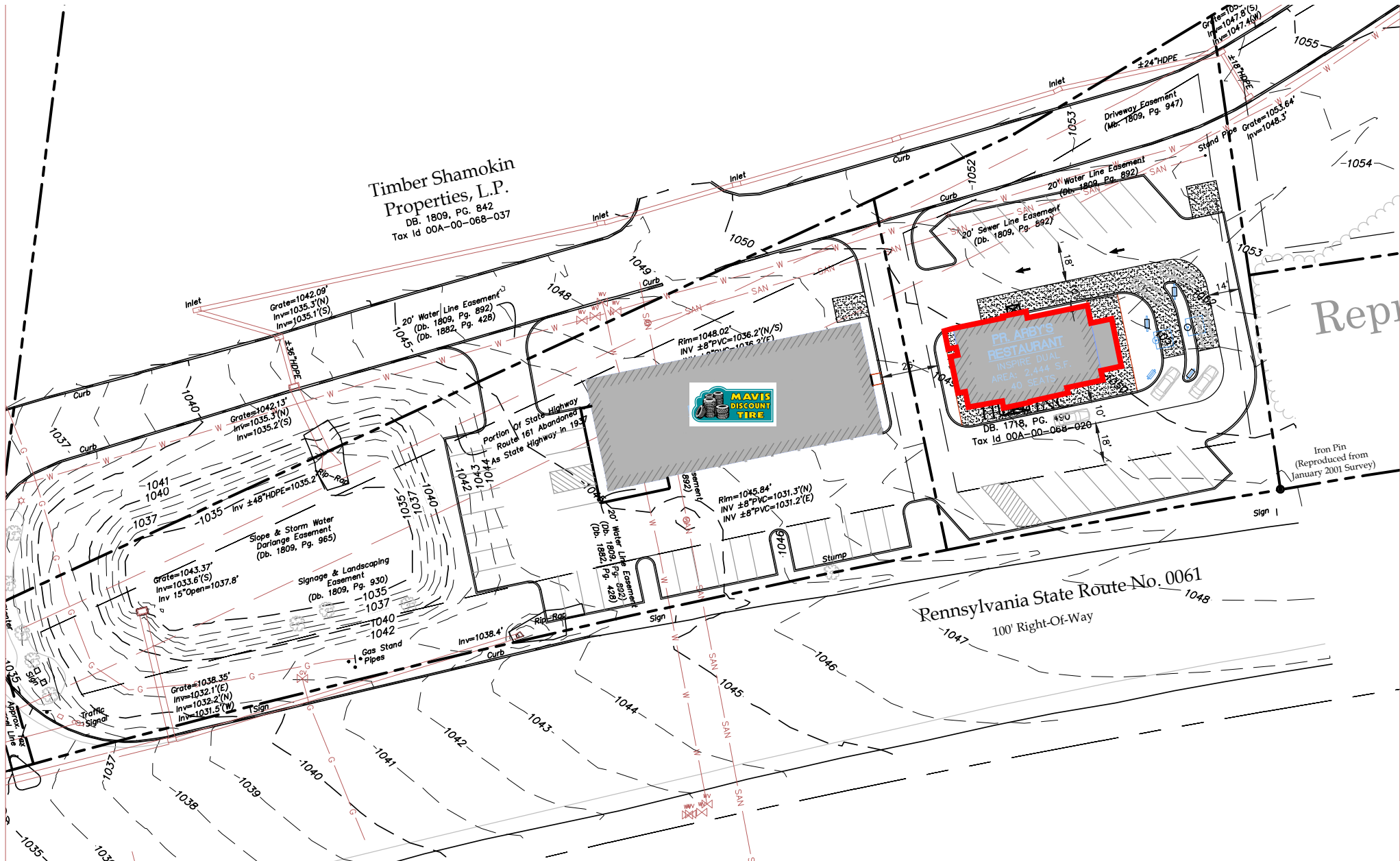


COMMERCIAL BROKERAGE. *Redefined.*

# 9343 PA-61

SHAMOKIN, PA | 17866

± .71 AC  
FOR SALE/LEASE



Adam Hagerman | Cale Bruso | Brad Rohrbaugh | Chad Stine

For Leasing Information: 717.843.5555 | Learn more online at [www.bennettwilliams.com](http://www.bennettwilliams.com)



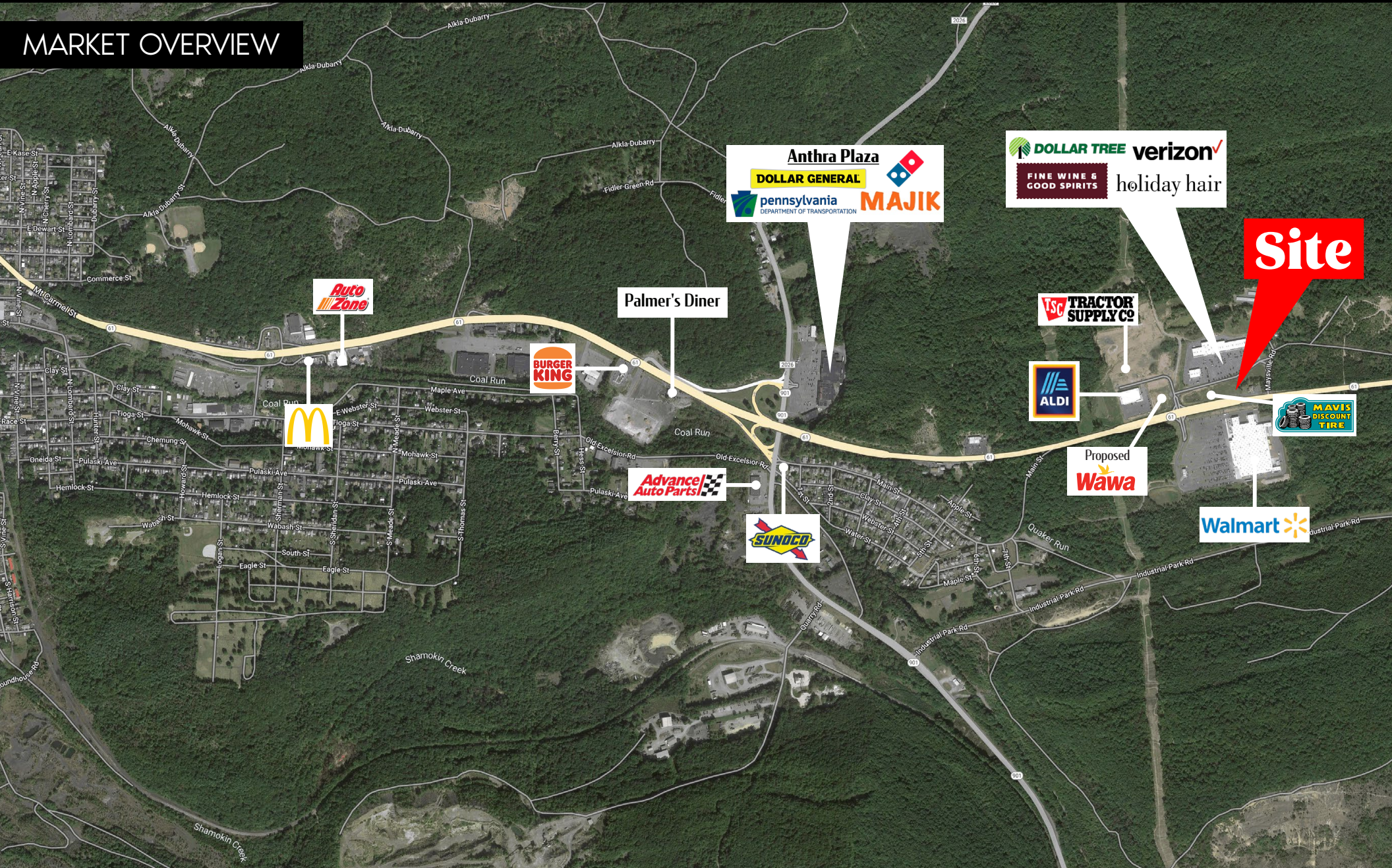
COMMERCIAL BROKERAGE. *Redefined.*

# 9343 PA-61

SHAMOKIN, PA | 17866

± .71 AC  
FOR SALE/LEASE

## MARKET OVERVIEW



Adam Hagerman | Cale Bruso | Brad Rohrbaugh | Chad Stine  
For Leasing Information: 717.843.5555 | Learn more online at [www.bennettwilliams.com](http://www.bennettwilliams.com)

ACTIVE MEMBER OF:  
**RETAIL** BROKERS  
NETWORK

COMMERCIAL BROKERAGE. *Redefined.*

# About Bennett Williams



Since its founding in 1956, Bennett Williams Commercial, Inc. has offered full Commercial Real Estate services to the Central Pennsylvania region and beyond. We have served thousands of commercial, industrial and retail clients as we have grown in size and reputation. With our team of both experienced and knowledgeable executives as well as young and energetic professionals, we have the team to handle any commercial real estate need.

At Bennett Williams, your investments are always in good hands. Our retail Investment sales group provides top notch investment sales services for all categories of retail investments for both buyers and sellers alike, whether institutional or local, throughout the Central Pennsylvania landscape. Whether the asset is a single or multi-tenant, we pride ourselves in going above and beyond the expectations of the client to achieve maximum results. With over 60 years under our belt, and over 25 licensed real estate professionals, we possess the knowledge, experience, and dedication trusted by many in the investment sales segment of the industry.



Bennett Williams is a member of the Capital Markets Real Estate Network, a nationwide network of professionals dedicated to, and specializing in the capital markets segment of commercial real estate. CMRE is comprised of the most highly-qualified, best-experienced independent Capital Market real estate professionals.

## LISTING AGENTS:

### Adam Hagerman

AHagerman@bennettwilliams.com

### Cale Bruso

CBruso@bennettwilliams.com

### Brad Rohrbaugh

BRohrbaugh@bennettwilliams.com

### Chad Stine

CStine@bennettwilliams.com

## OUR LOCATIONS:

### YORK OFFICE:

3528 Concord Rd.  
York, PA 17402

### EXTON OFFICE:

1 E. Uwchlan Ave.  
Suite 409, Exton, PA 19341

### WILLIAMSPORT OFFICE:

1000 Commerce Park Dr, Suite 310  
Williamsport, PA 17701

### LANCASTER OFFICE:

2173 Embassy Dr., Suite 201  
Lancaster, PA 17601

### NEW JERSEY OFFICE:

236 E. Route 38, Suite 130  
Moorestown, NJ 08057

### WEST CHESTER OFFICE:

107 E Chestnut St, Suite 107  
West Chester, PA 19380

### CONTACT US

717.843.5555 | [www.bennettwilliams.com](http://www.bennettwilliams.com)

