

# 425 N Queen Street

±1,500 SF  
AVAILABLE

LITTLESTOWN, PA | 17340



## PROPERTY OVERVIEW

425 North Queen Street is a 1,500 square-foot freestanding, retail building located in a main section of the retail corridor in Littlestown. The property is located along North Queen Street, which is a main corridor in the market due to its proximity to the intersection of Route 194 and Queen Street. 425 North Queen Street has national retail neighbors such as McDonald's, Dominos, Dollar General, FedEx and more!



Blake Shaffer | Adam Hagerman | Brad Rohrbaugh | Chad Stine  
For Leasing Information: 717.843.5555 | Learn more online at [www.bennettwilliams.com](http://www.bennettwilliams.com)

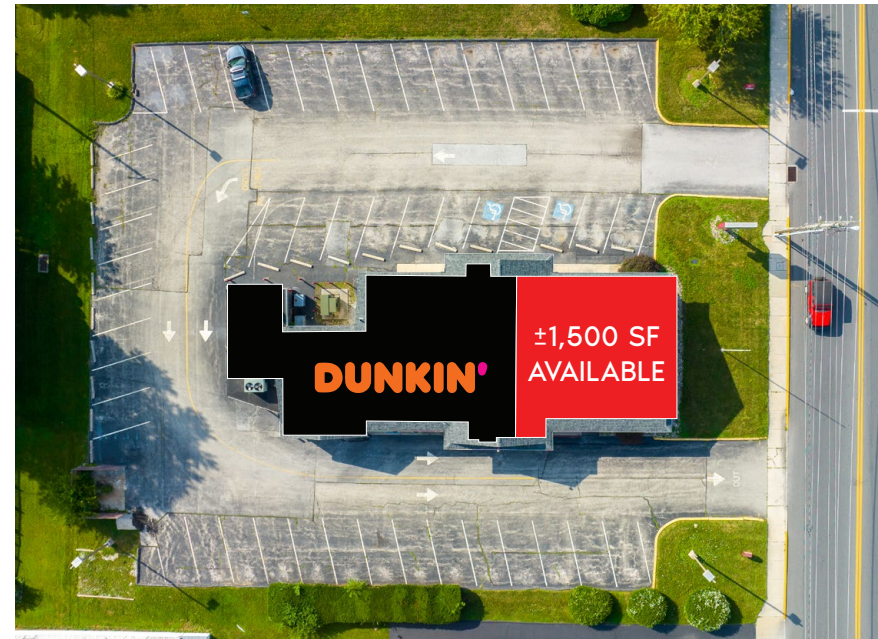
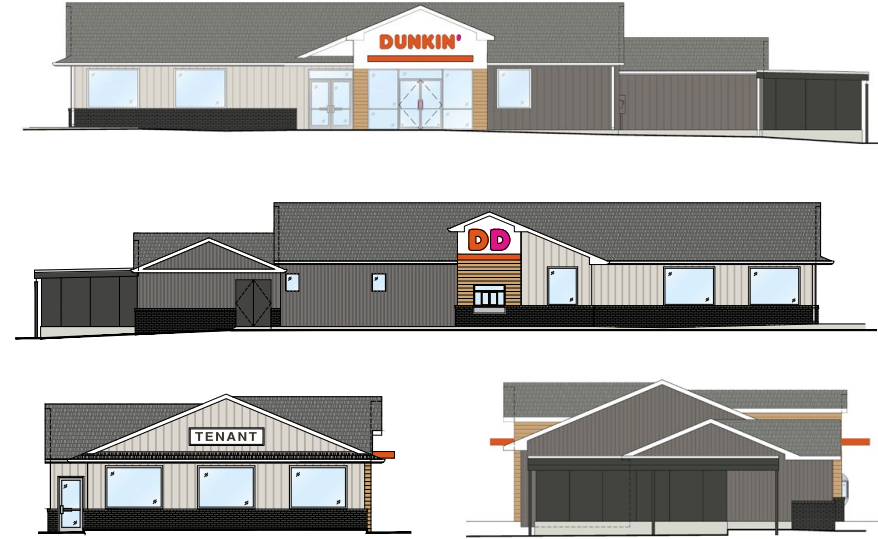


COMMERCIAL BROKERAGE. *Redefined.*

# 425 N Queen Street

LITTLESTOWN, PA | 17340

±1,500 SF  
AVAILABLE



DEMOGRAPHICS	3 MILE	5 MILE	7 MILE
TOTAL POPULATION	10,164	18,998	56,151
TOTAL EMPLOYEES	1,717	2,406	13,639
AVERAGE HHI	\$102,325	\$106,271	\$100,040
TOTAL HOUSEHOLDS	4,045	7,447	22,326

TRAFFIC COUNTS: N Queen St ± 9,000 VPD



Blake Shaffer | Adam Hagerman | Brad Rohrbaugh | Chad Stine  
For Leasing Information: 717.843.5555 | Learn more online at [www.bennettwilliams.com](http://www.bennettwilliams.com)



COMMERCIAL BROKERAGE. *Redefined.*

# 425 N Queen Street

LITTLESTOWN, PA | 17340

±1,500 SF  
AVAILABLE



Blake Shaffer | Adam Hagerman | Brad Rohrbaugh | Chad Stine  
For Leasing Information: 717.843.5555 | Learn more online at [www.bennettwilliams.com](http://www.bennettwilliams.com)

ACTIVE MEMBER OF:  
**RETAIL** BROKERS NETWORK

COMMERCIAL BROKERAGE. *Redefined.*

# About Bennett Williams



Since its founding in 1956, Bennett Williams Commercial, Inc. has offered full Commercial Real Estate services to the Central Pennsylvania region and beyond. We have served thousands of commercial, industrial and retail clients as we have grown in size and reputation. With our team of both experienced and knowledgeable executives as well as young and energetic professionals, we have the team to handle any commercial real estate need.

At Bennett Williams, your investments are always in good hands. Our retail Investment sales group provides top notch investment sales services for all categories of retail investments for both buyers and sellers alike, whether institutional or local, throughout the Central Pennsylvania landscape. Whether the asset is a single or multi-tenant, we pride ourselves in going above and beyond the expectations of the client to achieve maximum results. With over 60 years under our belt, and over 25 licensed real estate professionals, we possess the knowledge, experience, and dedication trusted by many in the investment sales segment of the industry.



Bennett Williams is a member of the Capital Markets Real Estate Network, a nationwide network of professionals dedicated to, and specializing in the capital markets segment of commercial real estate. CMRE is comprised of the most highly-qualified, best-experienced independent Capital Market real estate professionals.



## LISTING AGENTS:

### Blake Shaffer

BShaffer@bennettwilliams.com

### Adam Hagerman

AHagerman@bennettwilliams.com

### Brad Rohrbaugh

BRohrbaugh@bennettwilliams.com

### Chad Stine

CStine@bennettwilliams.com

## OUR LOCATIONS:

### YORK OFFICE:

3528 Concord Rd.  
York, PA 17402

### LANCASTER OFFICE:

2173 Embassy Dr., Suite 201  
Lancaster, PA 17601

### CONTACT US

717.843.5555 | [www.bennettwilliams.com](http://www.bennettwilliams.com)

### EXTON OFFICE:

1 E. Uwchlan Ave.  
Suite 409, Exton, PA 19341

### NEW JERSEY OFFICE:

236 E. Route 38, Suite 130  
Moorestown, NJ 08057

### WILLIAMSPORT OFFICE:

1000 Commerce Park Dr, Suite 310  
Williamsport, PA 17701

### WEST CHESTER OFFICE:

107 E Chestnut St, Suite 107  
West Chester, PA 19380

