

# Geiger Commons PLAZA

553 EAST 3<sup>RD</sup> STREET | WILLIAMSPORT, PA | 17701



**± 1,860 SF  
FOR LEASE**



Kandy Weader | Alyssa Gainer  
For Leasing Information: 717.843.5555 | Learn more online at [www.bennettwilliams.com](http://www.bennettwilliams.com)



COMMERCIAL BROKERAGE. *Redefined.*



# Geiger Commons Plaza

± 1,860 SF  
FOR LEASE

## PROPERTY HIGHLIGHTS

- Easy access to Route 220
- On East Third St between Williamsport & Loyalsock
- Local and national retailers nearby
- Both a waiting and reception area
- 2 large potential offices/conference rooms
- 4 small potential offices
- 2 restrooms
- Can lighting



## PROJECT DESCRIPTION

A spacious, 1,860 sf office/retail space is coming available for lease at Geiger Commons

Plaza in Williamsport, PA. The space is currently used as a medical office, but it can accommodate any office/retail user. Upon entrance of the building, you are greeted by a large waiting and reception area. There are 2 large potential offices/conference rooms, 4 small offices, and both a public and private restroom. The property has easy access to Route 220 and East 3rd Street, extending to "The Golden Strip" which is the main retail throughfare in Lycoming County. Current co-tenants include a nail salon, home health services, and an eye doctor.

DEMOGRAPHICS	3 MILE	5 MILE	7 MILE
TOTAL POPULATION	39,254	57,057	66,555
TOTAL EMPLOYEES	20,779	32,025	34,160
AVERAGE HHI	\$78,798	\$82,082	\$83,658
TOTAL HOUSEHOLDS	16,413	24,220	28,150
TRAFFIC COUNTS: E 3 <sup>rd</sup> Street ±7,000 VPD			



Kandy Weader | Alyssa Gainer

For Leasing Information: 717.843.5555 | Learn more online at [www.bennettwilliams.com](http://www.bennettwilliams.com)



COMMERCIAL BROKERAGE. *Redefined.*

# Geiger Commons Plaza

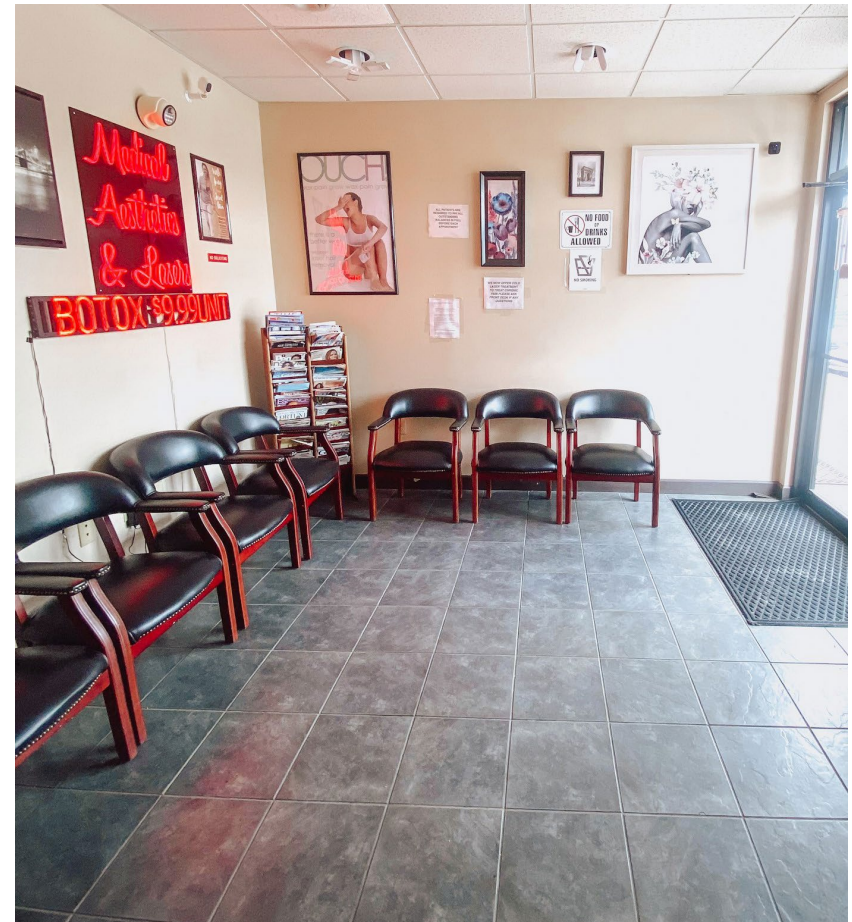
± 1,860 SF  
FOR LEASE

## LOCATION

Geiger Commons Plaza is a small, retail plaza located in Williamsport, PA. There is easy access to the property from Route 220/Susquehanna Beltway. East 3rd Street extends into the “Golden Strip” which is the main retail throughfare in Lycoming County. There are several national and local retailers located close by such as Panera, Starbucks, Jersey Mikes, Bootleg BBQ, and many more.

## TRADE AREA

In Williamsport there are 27,403 people in 11,070 homes with a median household income of \$45,060









# About Bennett Williams



Since its founding in 1956, Bennett Williams Commercial, Inc. has offered full Commercial Real Estate services to the Central Pennsylvania region and beyond. We have served thousands of commercial, industrial and retail clients as we have grown in size and reputation. With our team of both experienced and knowledgeable executives as well as young and energetic professionals, we have the team to handle any commercial real estate need.

At Bennett Williams, your investments are always in good hands. Our retail Investment sales group provides top notch investment sales services for all categories of retail investments for both buyers and sellers alike, whether institutional or local, throughout the Central Pennsylvania landscape. Whether the asset is a single or multi-tenant, we pride ourselves in going above and beyond the expectations of the client to achieve maximum results. With over 60 years under our belt, and over 25 licensed real estate professionals, we possess the knowledge, experience, and dedication trusted by many in the investment sales segment of the industry.



Bennett Williams is a member of the Capital Markets Real Estate Network, a nationwide network of professionals dedicated to, and specializing in the capital markets segment of commercial real estate. CMRE is comprised of the most highly-qualified, best-experienced independent Capital Market real estate professionals.

## LISTING AGENTS:

**Kandy Weader**

KWeader@bennettwilliams.com

**Alyssa Gainer**

AGainer@bennettwilliams.com

## OUR LOCATIONS:

### YORK OFFICE:

3528 Concord Rd.  
York, PA 17402

### EXTON OFFICE:

1 E. Uwchlan Ave.  
Suite 409, Exton, PA 19341

### WILLIAMSPORT OFFICE:

1000 Commerce Park Dr, Suite 310  
Williamsport, PA 17701

### LANCASTER OFFICE:

150 Farmington Lane  
Lancaster, PA 17601

### NEW JERSEY OFFICE:

236 E. Route 38, Suite 130  
Moorestown, NJ 08057

### WEST CHESTER OFFICE:

107 E Chestnut St, Suite 107  
West Chester, PA 19380

### CONTACT US

717.843.5555 | [www.bennettwilliams.com](http://www.bennettwilliams.com)

