

# Keystone Crossings

561 W MAIN AVE | MYERSTOWN, PA | 17067



## PROPERTY OVERVIEW

**Keystone Crossings** proposes a unique, brand-new retail development entering the Myerstown, PA market in early 2025. Positioned at the corner of Main Ave ( $\pm$ 1,100 VPD) and Ramona Road, this project is strategically positioned with frontage to the main thoroughfare in Myerstown, PA. Keystone Crossings features a unique opportunity for any retailer or tenant looking to penetrate the Myerstown market. The +/- 42-acre development is situated for a variety of uses, including but not limited to retail, medical, automotive, or hospitality. Contact our team today to discuss further!



**Cale Bruso | Adam Hagerman | Brad Rohrbaugh | Chad Stine**

For Leasing Information: 717.843.5555 | Learn more online at [www.bennettwilliams.com](http://www.bennettwilliams.com)



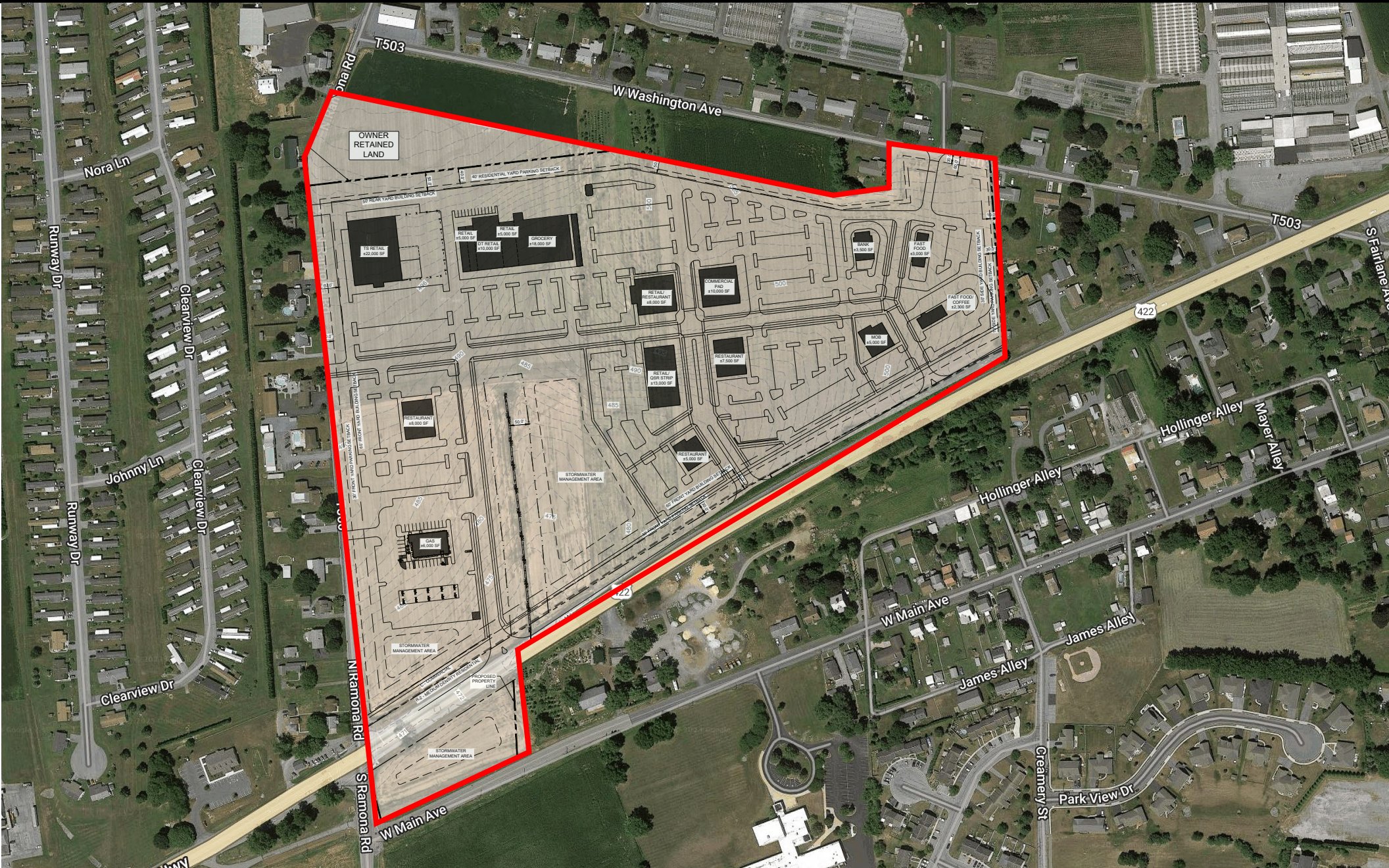
COMMERCIAL BROKERAGE. *Redefined.*



# Keystone Crossings

561 W MAIN AVE | MYERSTOWN, PA | 17067

± 42 AC  
FOR SALE/ LEASE



Cale Bruso | Adam Hagerman | Brad Rohrbaugh | Chad Stine  
For Leasing Information: 717.843.5555 | Learn more online at [www.bennettwilliams.com](http://www.bennettwilliams.com)



COMMERCIAL BROKERAGE. *Redefined.*



# Keystone Crossings

561 W MAIN AVE | MYERSTOWN, PA | 17067

± 42 AC  
FOR SALE/ LEASE



DEMOGRAPHICS	3 MILE	5 MILE	7 MILE
TOTAL POPULATION	13,858	42,614	85,133
TOTAL EMPLOYEES	5,265	10,869	25,782
AVERAGE HHI	\$108,521	\$94,935	\$88,540
TOTAL HOUSEHOLDS	5,510	16,388	32,847

TRAFFIC COUNTS: W Lincoln Ave ± 15,000 VPD



Cale Bruso | Adam Hagerman | Brad Rohrbaugh | Chad Stine  
For Leasing Information: 717.843.5555 | Learn more online at [www.bennettwilliams.com](http://www.bennettwilliams.com)



COMMERCIAL BROKERAGE. *Redefined.*

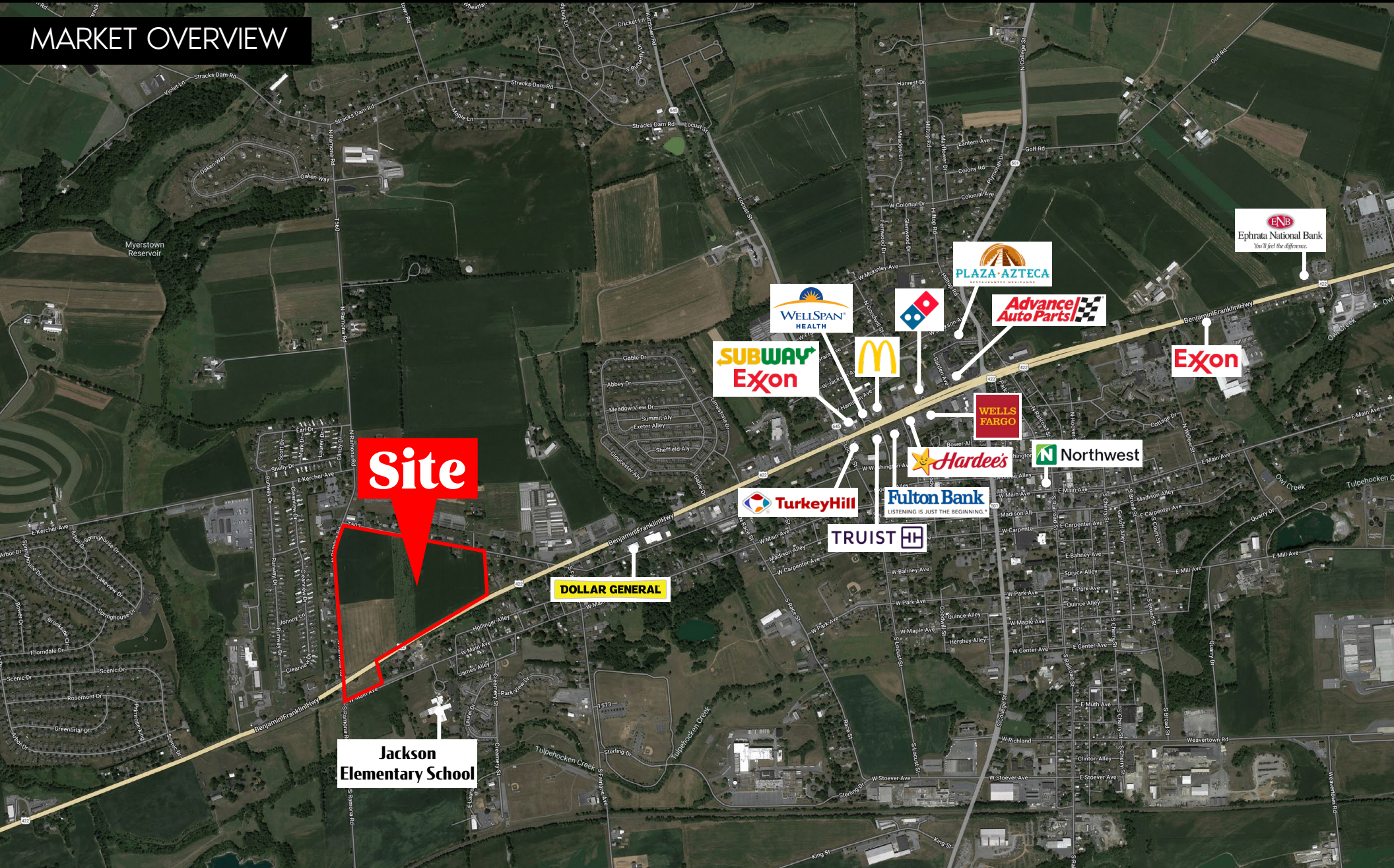


# Keystone Crossings

561 W MAIN AVE | MYERSTOWN, PA | 17067

± 42 AC  
FOR SALE/ LEASE

## MARKET OVERVIEW



Site

Jackson  
Elementary School

DOLLAR GENERAL

SUBWAY  
Exxon

WELLSPAN  
HEALTH

McDonald's

Domino's

PLAZA AZTECA  
RESTAURANTE MEXICANA

Advance  
Auto Parts

Exxon

ENB  
Ephrata National Bank  
You'll feel the difference.

WELLS  
FARGO

Hardee's

Northwest

TurkeyHill

Fulton Bank  
LISTENING IS JUST THE BEGINNING.

TRUIST



Cale Bruso | Adam Hagerman | Brad Rohrbaugh | Chad Stine  
For Leasing Information: 717.843.5555 | Learn more online at [www.bennettwilliams.com](http://www.bennettwilliams.com)

ACTIVE MEMBER OF:  
RETAIL BROKERS NETWORK

COMMERCIAL BROKERAGE. *Redefined.*



## OUR LOCATIONS:

### YORK OFFICE:

3528 Concord Rd.  
York, PA 17402

### LANCASTER OFFICE:

150 Farmington Lane, Suite 201  
Lancaster, PA 17601

### EXTON OFFICE:

1 E. Uwchlan Ave.  
Suite 409, Exton, PA 19341

### WILLIAMSPORT OFFICE:

1000 Commerce Park Dr, Suite 310  
Williamsport, PA 17701

### WEST CHESTER OFFICE:

107 E Chestnut St, Suite 107  
West Chester, PA 19380

### NEW JERSEY OFFICE:

236 E. Route 38, Suite 130  
Moorestown, NJ 08057

## LISTING AGENTS:



### Cale Bruso

CBruso@bennettwilliams.com



### Adam Hagerman

AHagerman@bennettwilliams.com



### Brad Rohrbaugh

BRohrbaugh@bennettwilliams.com



### Chad Stine

CStine@bennettwilliams.com

### CONTACT US

717.843.5555 | [www.bennettwilliams.com](http://www.bennettwilliams.com)



## About Bennett Williams

Since its founding in 1956, Bennett Williams Commercial, Inc. has offered full Commercial Real Estate services to the Central Pennsylvania region and beyond. We have served thousands of commercial, industrial and retail clients as we have grown in size and reputation. With our team of both experienced and knowledgeable executives as well as young and energetic professionals, we have the team to handle any commercial real estate need.

Bennett Williams is a member of the Retail Brokers Network (RBN), a partnership of the best regional retail brokerage firms servicing all of the major markets across the United States. Our affiliates are handpicked ensuring that our clients receive top quality service and representation in any market they need help in, with 61 offices across 65+ markets and 700+ members.

