

# 979 EAST PARK DRIVE

HARRISBURG, PA | 17111

**AVAILABLE  
NOVEMBER OF 2023**

**± 7,000 SF  
AVAILABLE FOR LEASE**



Ashlee Lehman | Dave Nicholson | Brad Rohrbaugh | Chad Stine  
For Leasing Information: 717.843.5555 | Learn more online at [www.bennettwilliams.com](http://www.bennettwilliams.com)



COMMERCIAL BROKERAGE. *Redefined.*

# 979 EAST PARK DRIVE

HARRISBURG, PA | 17111

± 7,000 SF  
FOR LEASE

## PROPERTY OVERVIEW

979 East Park Drive is a 7,000 square foot freestanding building available for lease in Harrisburg, PA. The property benefits from ample parking, easy access, signage opportunity on the facade, and great position in the market. 979 East Park Drive is ideally located off Union Deposit Road, which is one of the market's main retail corridors, along with easy accessibility to Interstate 83. Major retailers in the surrounding area include Giant Grocery Store, Big Lots, Crunch Fitness, Lowes, Starbucks, and Panera Bread, just to name a few. The property is located within Lower Paxton Township and zoned Business Campus.



DEMOGRAPHICS	1 MILE	3 MILE	5 MILE
TOTAL POPULATION	8,482	92,459	187,155
TOTAL EMPLOYEES	8,184	51,145	128,326
AVERAGE HHI	\$87,092	\$85,704	\$97,201
TOTAL HOUSEHOLDS	3,953	37,328	78,560

TRAFFIC COUNTS: E Park Drive ±6,000 VPD



Ashlee Lehman | Dave Nicholson | Brad Rohrbaugh | Chad Stine  
For Leasing Information: 717.843.5555 | Learn more online at [www.bennettwilliams.com](http://www.bennettwilliams.com)



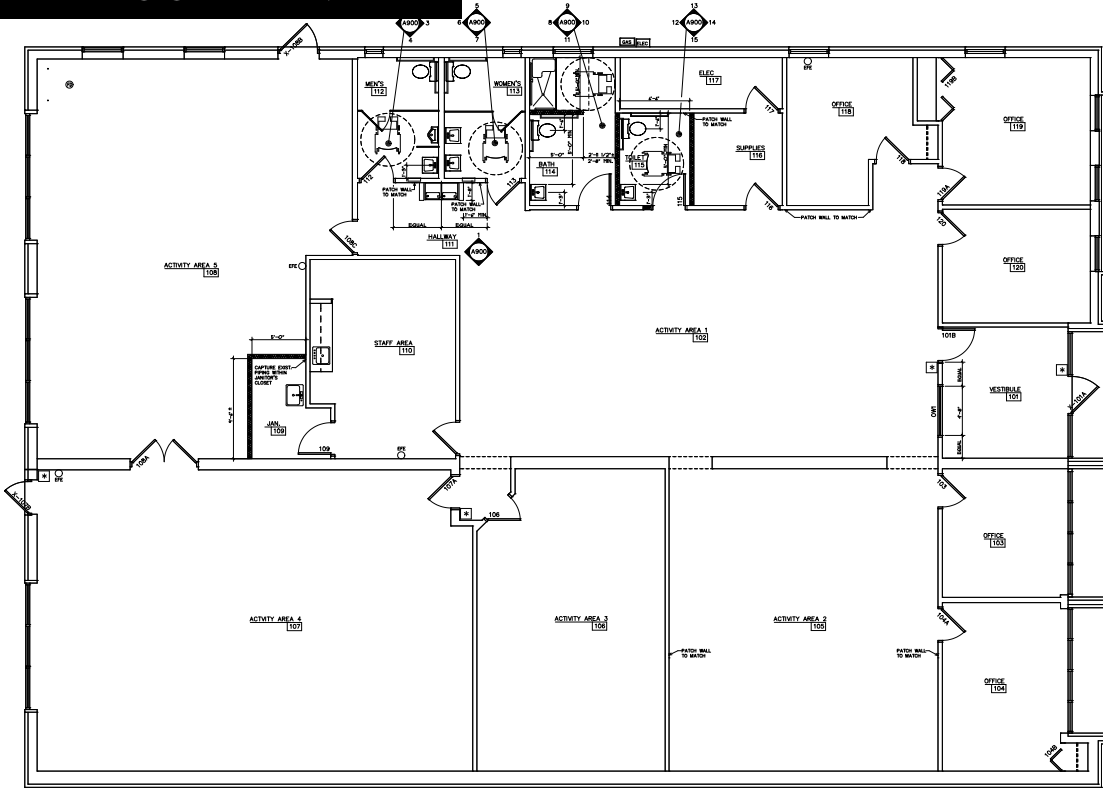
COMMERCIAL BROKERAGE. *Redefined.*

# 979 EAST PARK DRIVE

HARRISBURG, PA | 17111

± 7,000 SF  
FOR LEASE

## FLOOR PLAN



Ashlee Lehman | Dave Nicholson | Brad Rohrbaugh | Chad Stine  
For Leasing Information: 717.843.5555 | Learn more online at [www.bennettwilliams.com](http://www.bennettwilliams.com)

ACTIVE MEMBER OF:  
**RETAIL** BROKERS NETWORK

COMMERCIAL BROKERAGE. *Redefined.*

# 979 EAST PARK DRIVE

HARRISBURG, PA | 17111

± 7,000 SF  
FOR LEASE

## MARKET OVERVIEW



**DAUPHIN PLAZA**

PriceRite MARKETPLACE Ashley HOMESTORE **BIG LOTS!** **WALMART**  
LESLIE'S SWIMMING POOL SUPPLIES **DOLLAR GENERAL** **SUBWAY**  
metroPCS SALLY BEAUTY H&R BLOCK

**LOWE'S**

Little Caesars **DUNKIN'** Hampton Inn Arby's  
IHOP AT&T

P.J. WHELIHAN'S MUFFLE HOUSE Ritas  
OUTBACK FULTON BANK Wendy's SHEETZ McDonald's Home Depot  
TEXAS RITE AID

**THE POINT SC**

**GIANT** FINE WINE & GOOD SPIRITS  
Staples **DOLLAR TREE**  
Burlington AspenDental  
Panera BREAD home OUTLET BURGER KING  
Kitchens, Baths, Floors & More

**UNION SQUARE SC**

weis Gabe's Advance Auto Parts  
MAJIK DOLLAR TREE  
GameStop THE SALVATION ARMY Starbucks JJ

BW Best Western  
Hotels & Resorts

**Site**



Ashlee Lehman | Dave Nicholson | Brad Rohrbaugh | Chad Stine  
For Leasing Information: 717.843.5555 | Learn more online at [www.bennettwilliams.com](http://www.bennettwilliams.com)

ACTIVE MEMBER OF:  
**RETAIL** BROKERS NETWORK

COMMERCIAL BROKERAGE. *Redefined.*

# About Bennett Williams



Since its founding in 1956, Bennett Williams Commercial, Inc. has offered full Commercial Real Estate services to the Central Pennsylvania region and beyond. We have served thousands of commercial, industrial and retail clients as we have grown in size and reputation. With our team of both experienced and knowledgeable executives as well as young and energetic professionals, we have the team to handle any commercial real estate need.

At Bennett Williams, your investments are always in good hands. Our retail Investment sales group provides top notch investment sales services for all categories of retail investments for both buyers and sellers alike, whether institutional or local, throughout the Central Pennsylvania landscape. Whether the asset is a single or multi-tenant, we pride ourselves in going above and beyond the expectations of the client to achieve maximum results. With over 60 years under our belt, and over 25 licensed real estate professionals, we possess the knowledge, experience, and dedication trusted by many in the investment sales segment of the industry.



Bennett Williams is a member of the Capital Markets Real Estate Network, a nationwide network of professionals dedicated to, and specializing in the capital markets segment of commercial real estate. CMRE is comprised of the most highly-qualified, best-experienced independent Capital Market real estate professionals.



## LISTING AGENTS:

### Ashlee Lehman

ALehman@bennettwilliams.com

### Dave Nicholson

DNicholson@bennettwilliams.com

### Brad Rohrbaugh

BRohrbaugh@bennettwilliams.com

### Chad Stine

CStine@bennettwilliams.com

## OUR LOCATIONS:

### YORK OFFICE:

3528 Concord Rd.  
York, PA 17402

### LANCASTER OFFICE:

150 Farmington Lane, Suite 201  
Lancaster, PA 17601

### CONTACT US

717.843.5555 | [www.bennettwilliams.com](http://www.bennettwilliams.com)

### EXTON OFFICE:

1 E. Uwchlan Ave.  
Suite 409, Exton, PA 19341

### NEW JERSEY OFFICE:

236 E. Route 38, Suite 130  
Moorestown, NJ 08057

### WILLIAMSPORT OFFICE:

1000 Commerce Park Dr, Suite 310  
Williamsport, PA 17701

### WEST CHESTER OFFICE:

107 E Chestnut St, Suite 107  
West Chester, PA 19380

