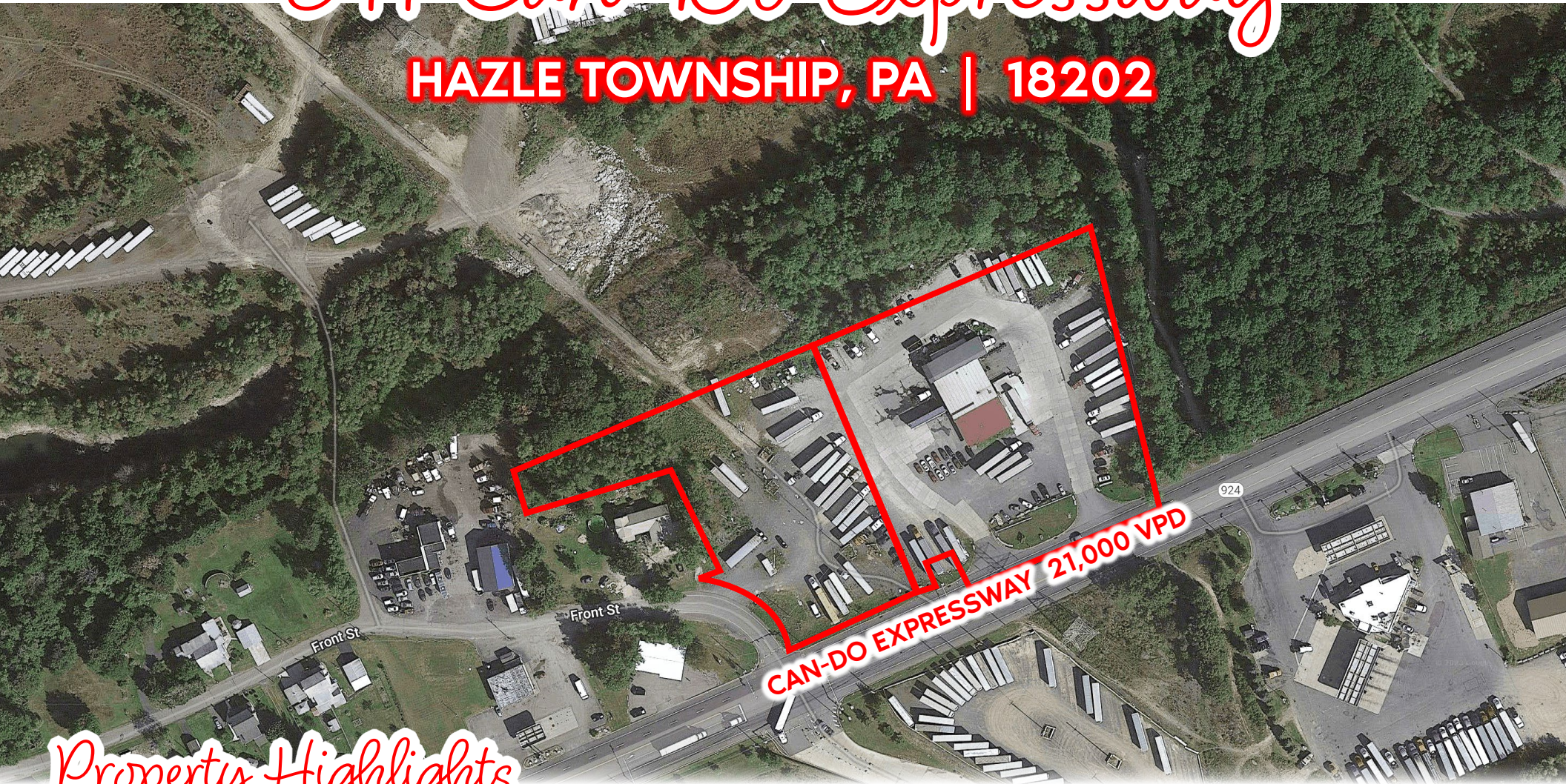


# 511 Can-Do Expressway

HAZLE TOWNSHIP, PA | 18202



## Property Highlights

- 1 - 6.35 acres available for lease
- Located 0.5 miles away from busy Interstate 81
- 21,000 VPD for Can-Do Expressway and 46,000 for I-81
- Perfect for a wide range of uses
- Industrial, retail, hospitality, and residential properties nearby

**±1-6.35 AC  
FOR LEASE**



Kandy Weader

For Leasing Information: 717.843.5555 | Learn more online at [www.bennettwilliams.com](http://www.bennettwilliams.com)

ACTIVE MEMBER OF:  
**RETAIL** BROKERS  
NETWORK

COMMERCIAL BROKERAGE. *Redefined.*

# 511 Can-Do Expressway

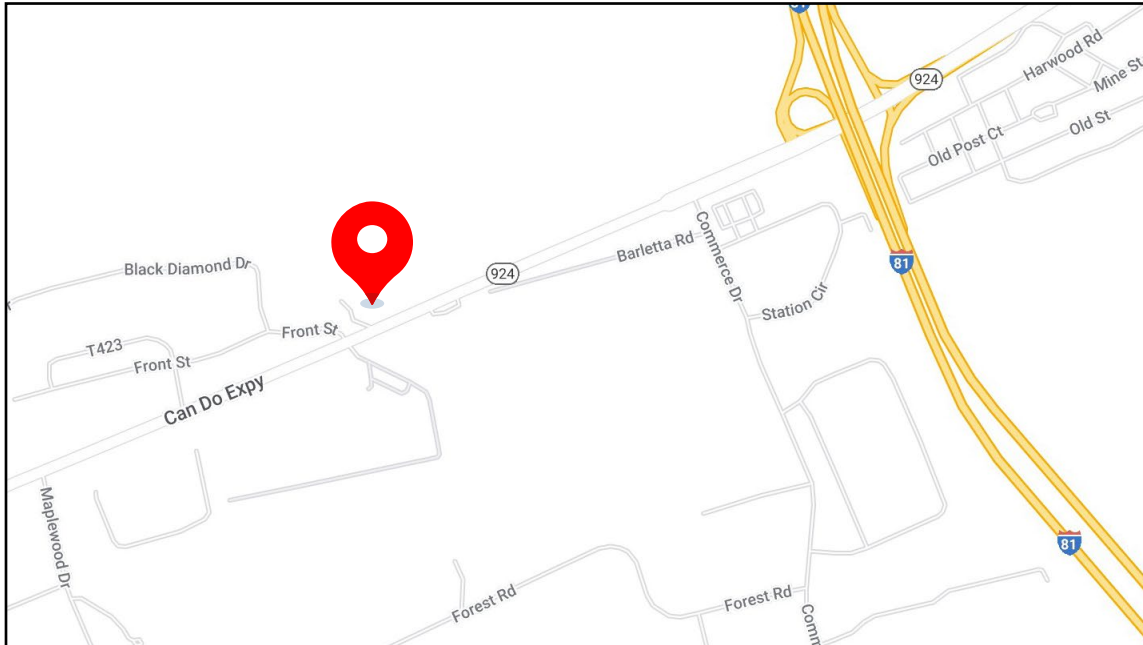
±1-6.35 AC  
FOR LEASE

## Property Overview

The property at 511 Can-Do Expy, Hazle Township, PA is a prime piece of commercial land available for lease from 1- 6.35 acres. Can-Do Expy (20,869 VPD) is just off I-81 (45,524 VPD). The property is currently used as yard space for a trucking company. It is located 0.5 miles off the highway and centrally located between industrial, retail, hospitality, and residential properties, making it an attractive location for a wide range of uses. Nearby retailers and industrial users include Sonic, Burger King, Residence Inn by Marriott Hazleton, Romark Logistics, PPL Utilities, Safelite Autoglass, and many more. With many industrial properties close by and high traffic counts, this site would be a good fit for but not limited to, a truck stop, hotel, fast casual, c-store, and many more.

DEMOGRAPHICS	3 MILE	5 MILE	7 MILE
TOTAL POPULATION	8,887	53,085	63,620
TOTAL EMPLOYEES	7,971	20,972	22,487
AVERAGE HHI	\$67,450	\$71,480	\$75,362
TOTAL HOUSEHOLDS	3,448	20,532	25,097

TRAFFIC COUNTS: **CAN-DO EXPY** ±21,000 VPD |  
**I-81** ±46,000 VPD



## Location

The parcel at 511 Can-Do Expy is off I-81 and is located just off the busy expressway that extends from Hazleton to Frackville, before joining with Route 61. It is located only 3.8 miles away from Hazleton.

## Trade Area

Hazle Township is in Luzerne County, PA. Luzerne County has a total population of 326,369 people in 151,347 homes with a median household income of \$56,534. The area is heavily industrial with some retail, restaurants, and hospitality.



Kandy Weader

For Leasing Information: 717.843.5555 | Learn more online at [www.bennettwilliams.com](http://www.bennettwilliams.com)



COMMERCIAL BROKERAGE. *Redefined.*

# 511 Can-Do Expressway

±1-6.35 AC  
FOR LEASE



**Kandy Weader**  
For Leasing Information: 717.843.5555 | Learn more online at [www.bennettwilliams.com](http://www.bennettwilliams.com)

ACTIVE MEMBER OF:  
**RETAIL BROKERS NETWORK**

COMMERCIAL BROKERAGE. *Redefined.*

## OUR LOCATIONS:

### YORK OFFICE:

3528 Concord Rd.  
York, PA 17402

### LANCASTER OFFICE:

150 Farmington Lane, Suite 201  
Lancaster, PA 17601

### EXTON OFFICE:

1 E. Uwchlan Ave.  
Suite 409, Exton, PA 19341

### STATE COLLEGE OFFICE:

330 Innovation Blvd, Suite 205  
State College, PA 16803

### WEST CHESTER OFFICE:

107 E Chestnut St, Suite 1  
West Chester, PA 19380

### NEW JERSEY OFFICE:

236 E. Route 38, Suite 130  
Moorestown, NJ 08057

## LISTING AGENTS:



### KANDY WEADER

kweader@bennettwilliams.com

### CONTACT US

717.843.5555 | [www.bennettwilliams.com](http://www.bennettwilliams.com)



## About Bennett Williams

Since its founding in 1956, Bennett Williams Commercial, Inc. has offered full Commercial Real Estate services to the Central Pennsylvania region and beyond. We have served thousands of commercial, industrial and retail clients as we have grown in size and reputation. With our team of both experienced and knowledgeable executives as well as young and energetic professionals, we have the team to handle any commercial real estate need.

Bennett Williams is a member of the Retail Brokers Network (RBN), a partnership of the best regional retail brokerage firms servicing all of the major markets across the United States. Our affiliates are handpicked ensuring that our clients receive top quality service and representation in any market they need help in, with 61 offices across 65+ markets and 700+ members.

