

3201 MARKET STREET

FOR LEASE
± 2,501 SF

CAMP HILL, PA | 17011



±33,000 VPD

±12,000 VPD



Ashlee Lehman | Blake Shaffer | Caitlyn Courtney | Brad Rohrbach | Chad Stine
For Leasing Information: 717.843.5555 | Learn more online at www.bennettwilliams.com



COMMERCIAL BROKERAGE. *Redefined.*

3201 MARKET STREET

CAMP HILL, PA | 17011

FOR LEASE

± 2,501 SF

PROPERTY OVERVIEW

3201 Market Street is a 10,600 square foot freestanding building located in the heart of Camp Hill, PA. It's positioned ideally off Route 15 with easy access to Route 11 and Interstate 76. Market Street itself is a well-known travel artery in the market and travels West to East, through downtown Camp Hill. Located at a fully signalized intersection, this is an ideal location for National and Regional retail, medical, and/or restaurant users. Other benefits to this site include its close proximity to the hub of retail, ample parking, two points of access, excellent visibility, and signage opportunities. Nearby retailers include Starbucks, Giant Grocery, Panera, Five Below, Boscov's, and Chipotle, just to name a few.



Ashlee Lehman | Blake Shaffer | Caitlyn Courtney | Brad Rohrbough | Chad Stine
For Leasing Information: 717.843.5555 | Learn more online at www.bennettwilliams.com



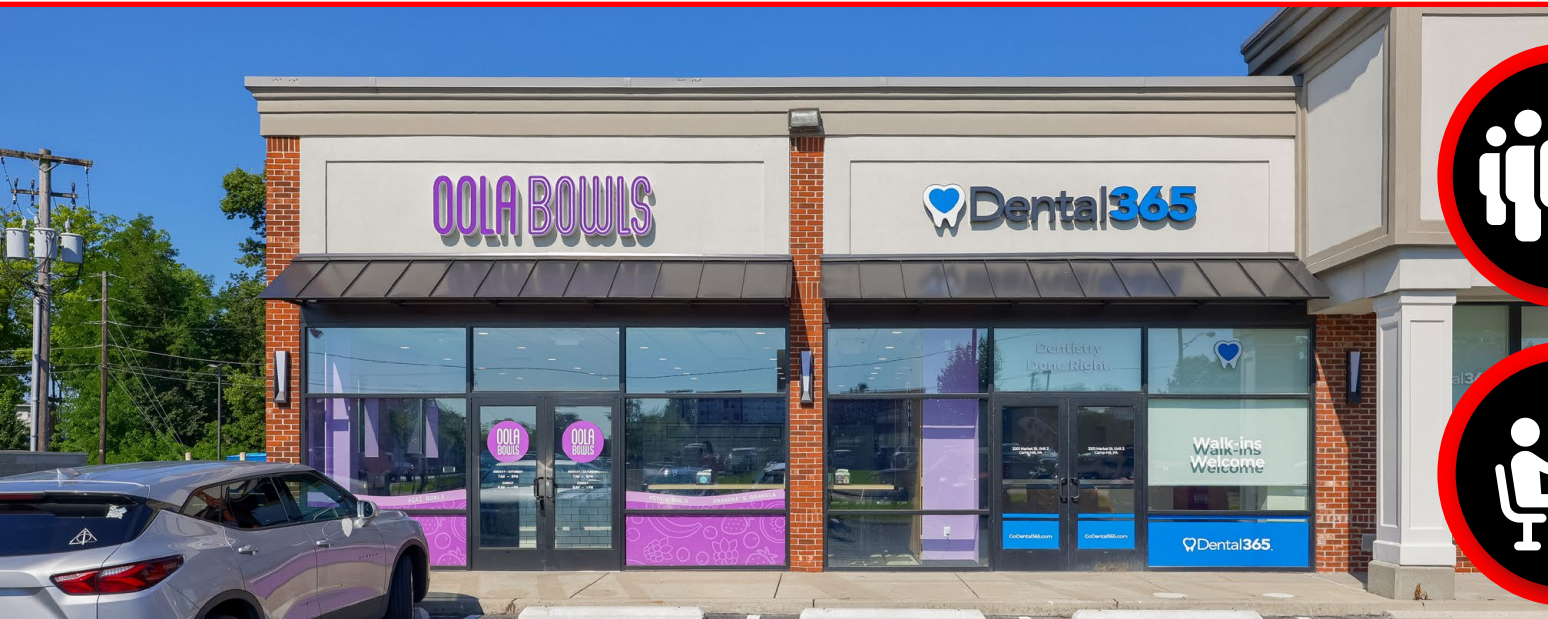
COMMERCIAL BROKERAGE. *Redefined.*

3201 MARKET STREET

CAMP HILL, PA | 17011

FOR **LEASE**

± 2,501 SF



POPULATION

1 MILE- 9,023
3 MILE- 67,563
5 MILE- 185,380



EMPLOYEES

1 MILE- 6,935
3 MILE- 47,797
5 MILE- 123,881



AVERAGE HHI

1 MILE- \$128,616
3 MILE- \$112,886
5 MILE- \$103,692



HOUSEHOLDS

1 MILE- 3,767
3 MILE- 28,797
5 MILE- 78,764



Ashlee Lehman | Blake Shaffer | Caitlyn Courtney | Brad Rohrbough | Chad Stine
For Leasing Information: 717.843.5555 | Learn more online at www.bennettwilliams.com



COMMERCIAL BROKERAGE. *Redefined.*

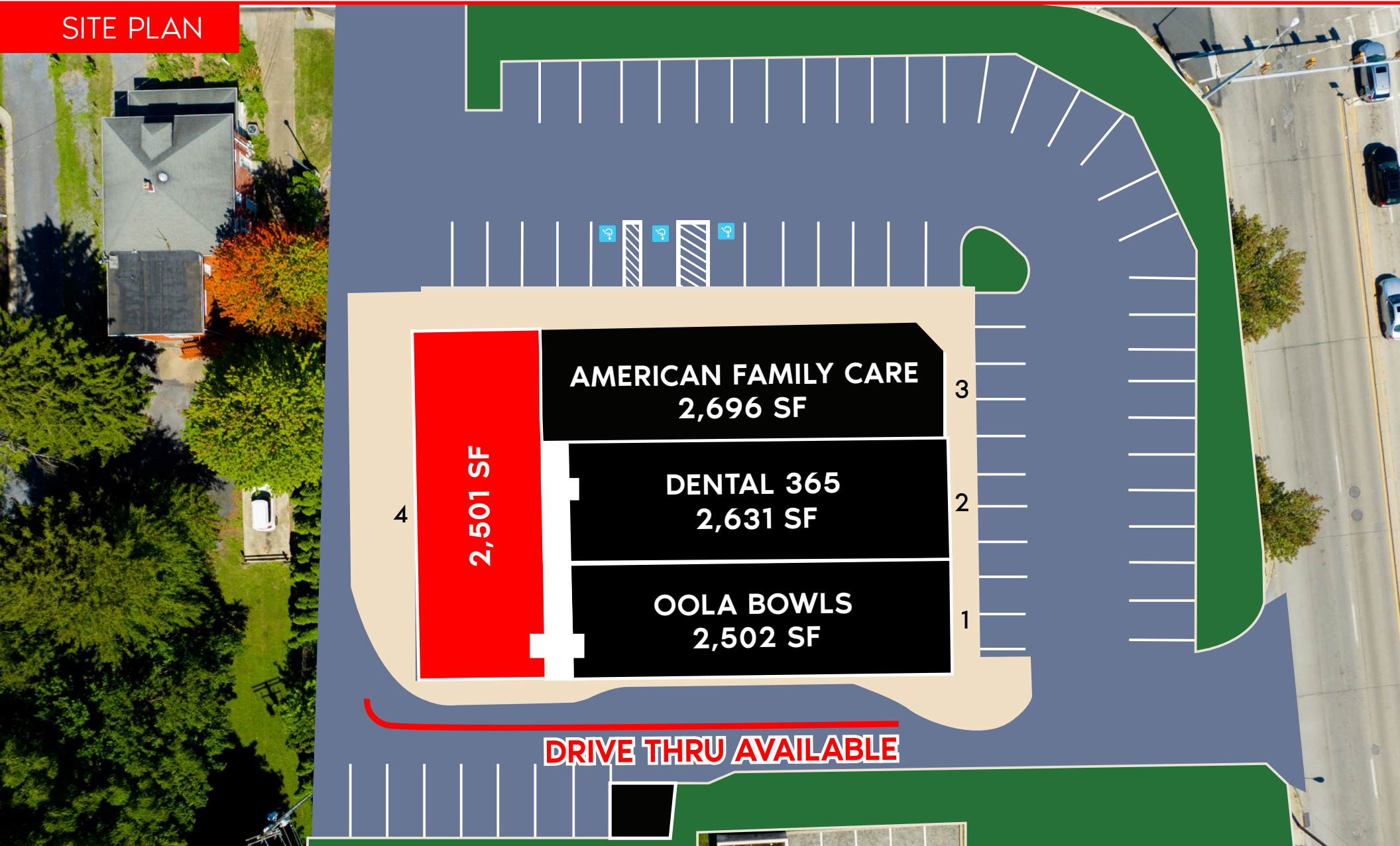
3201 MARKET STREET

CAMP HILL, PA | 17011

FOR **LEASE**

± 2,501 SF

SITE PLAN



Ashlee Lehman | Blake Shaffer | Caitlyn Courtney | Brad Rohrbach | Chad Stine
For Leasing Information: 717.843.5555 | Learn more online at www.bennettwilliams.com



COMMERCIAL BROKERAGE. *Redefined.*

3201 MARKET STREET

CAMP HILL, PA | 17011

FOR LEASE

± 2,501 SF

MARKET OVERVIEW



Ashlee Lehman | Blake Shaffer | Caitlyn Courtney | Brad Rohrbach | Chad Stine
For Leasing Information: 717.843.5555 | Learn more online at www.bennettwilliams.com



COMMERCIAL BROKERAGE. *Redefined.*

Bennett Williams

COMMERCIAL REAL ESTATE

OUR LOCATIONS:

YORK OFFICE:

3528 Concord Rd.
York, PA 17402

LANCASTER OFFICE:

150 Farmington Lane, Suite 201
Lancaster, PA 17601

EXTON OFFICE:

1 E. Uwchlan Ave.
Suite 409, Exton, PA 19341

STATE COLLEGE OFFICE:

330 Innovation Park, Suite 205
State College, PA 16803

WEST CHESTER OFFICE:

107 E Chestnut St, Suite 1
West Chester, PA 19380

NEW JERSEY OFFICE:

236 E. Route 38, Suite 130
Moorestown, NJ 08057

LISTING AGENTS:



Ashlee Lehman

ALehman@bennettwilliams.com



Blake Shaffer

BShaffer@bennettwilliams.com



Caityln Courtney

CCourtney@bennettwilliams.com



Brad Rohrbaugh

BRohrbaugh@bennettwilliams.com



Chad Stine

CStine@bennettwilliams.com

CONTACT US

717.843.5555 | www.bennettwilliams.com

LANDLORD
REPRESENTATION

TENANT
REPRESENTATION

INVESTMENT
SALES

PROPERTY
MANAGEMENT



About Bennett Williams

Since its founding in 1956, Bennett Williams Commercial, Inc. has offered full Commercial Real Estate services to the Central Pennsylvania region and beyond. We have served thousands of commercial, industrial and retail clients as we have grown in size and reputation. With our team of both experienced and knowledgeable executives as well as young and energetic professionals, we have the team to handle any commercial real estate need.

Bennett Williams is a member of the Retail Brokers Network (RBN), a partnership of the best regional retail brokerage firms servicing all of the major markets across the United States. Our affiliates are handpicked ensuring that our clients receive top quality service and representation in any market they need help in, with 61 offices across 65+ markets and 700+ members.

