

# VIEWMONT MALL OUTPARCEL

100 VIEWMONT MALL | SCRANTON, PA | 18508



Site

RT 6 ± 30,000 VPD

± 1,500-10,000 SF AVAILABLE | FOR LEASE

NEARBY RETAILERS



and more!



Justin Willits | Cale Brusco | Francesco Conigliaro | Brad Rohrbaugh | Chad Stine  
For Lease Information: 717.843.5555 | Learn more online at [www.bennettwilliams.com](http://www.bennettwilliams.com)



COMMERCIAL BROKERAGE. *Redefined.*

# VIEWMONT MALL OUTPARCEL

SCRANTON, PA | 18508

± 1,500 - 10,000 SF  
FOR **LEASE**

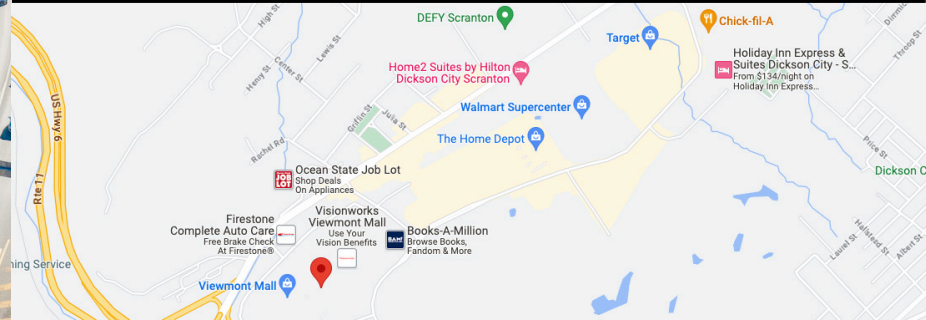
## OVERVIEW

Positioned at the crossroads of five interstate highways with regional access from I-81, I-84, I-380, Route 6 and the PA Turnpike (I-476), the outparcel at the Viewmont Mall offers a tremendous opportunity to any retailer looking to enter the Dickson City/Scranton retail landscape. The Mall's intersection at I-81 and Route 6 delivers 76,000 vehicles per day, offering access and visibility to a prospective tenant. Strategically positioned in the heart of Dickson City's retail market, Viewmont Mall is the home to the likes of JCPenney, Dick's Sporting Goods, Macy's, HomeGoods, Old Navy, Ulta Beauty, Field & Stream, and more! Contact our team for more information!



DEMOGRAPHICS	3 MILE	5 MILE	7 MILE
TOTAL POPULATION	51,397	133,792	160,651
TOTAL EMPLOYEES	22,779	61,111	72,199
AVERAGE HHI	\$84,410	\$85,824	\$87,533
TOTAL HOUSEHOLDS	21,323	55,406	66,465

TRAFFIC COUNTS: RT 6 ± 30,000 VPD | I-81 ± 50,000 VPD



Justin Willits | Cale Bruso | Francesco Conigliaro | Brad Rohrbaugh | Chad Stine  
For Lease Information: 717.843.5555 | Learn more online at [www.bennettwilliams.com](http://www.bennettwilliams.com)

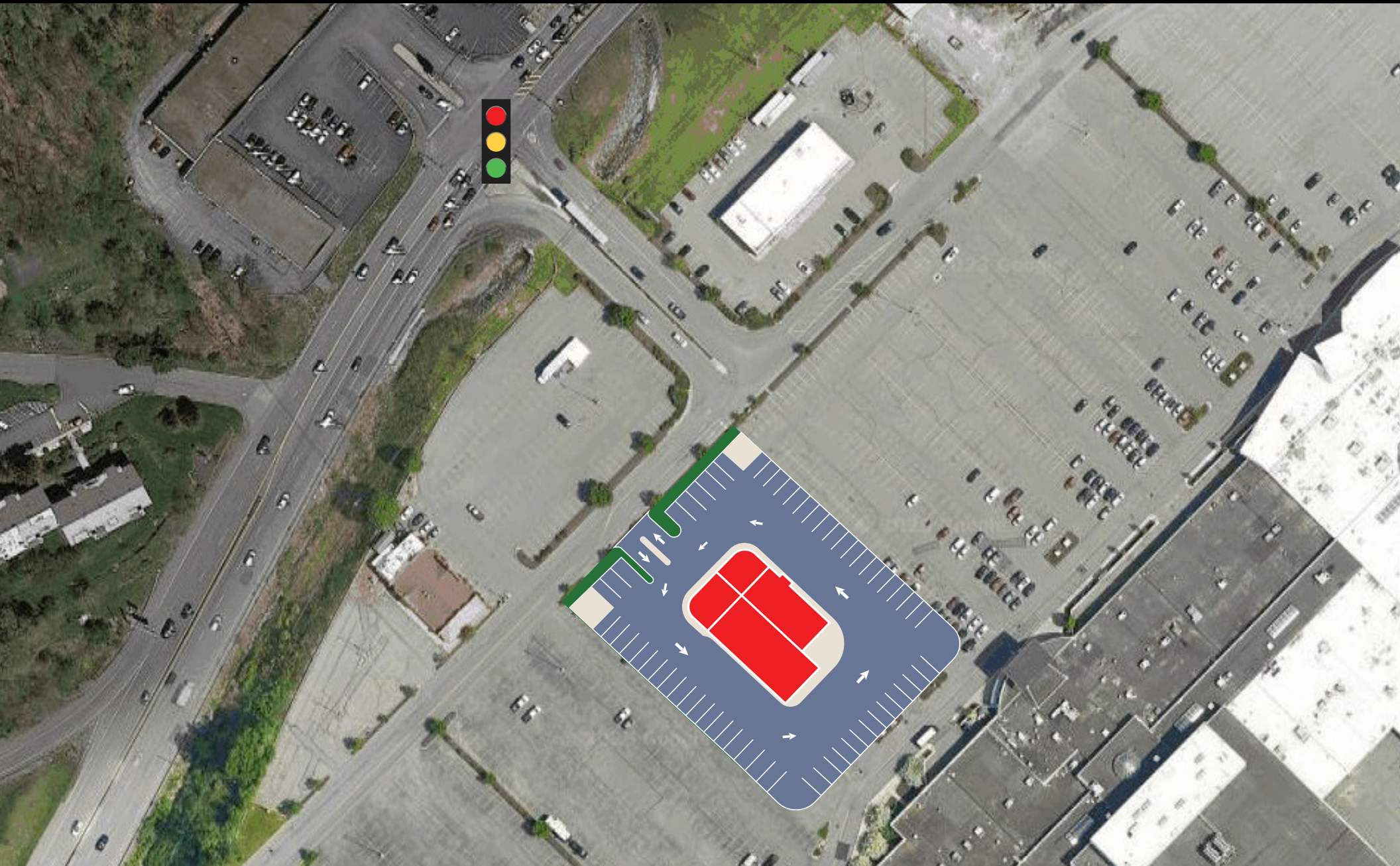


COMMERCIAL BROKERAGE. *Redefined.*

# VIEWMONT MALL OUTPARCEL

SCRANTON, PA | 18508

± 1,500 - 10,000 SF  
FOR **LEASE**



Justin Willits | Cale Bruso | Francesco Conigliaro | Brad Rohrbaugh | Chad Stine  
For Lease Information: 717.843.5555 | Learn more online at [www.bennettwilliams.com](http://www.bennettwilliams.com)

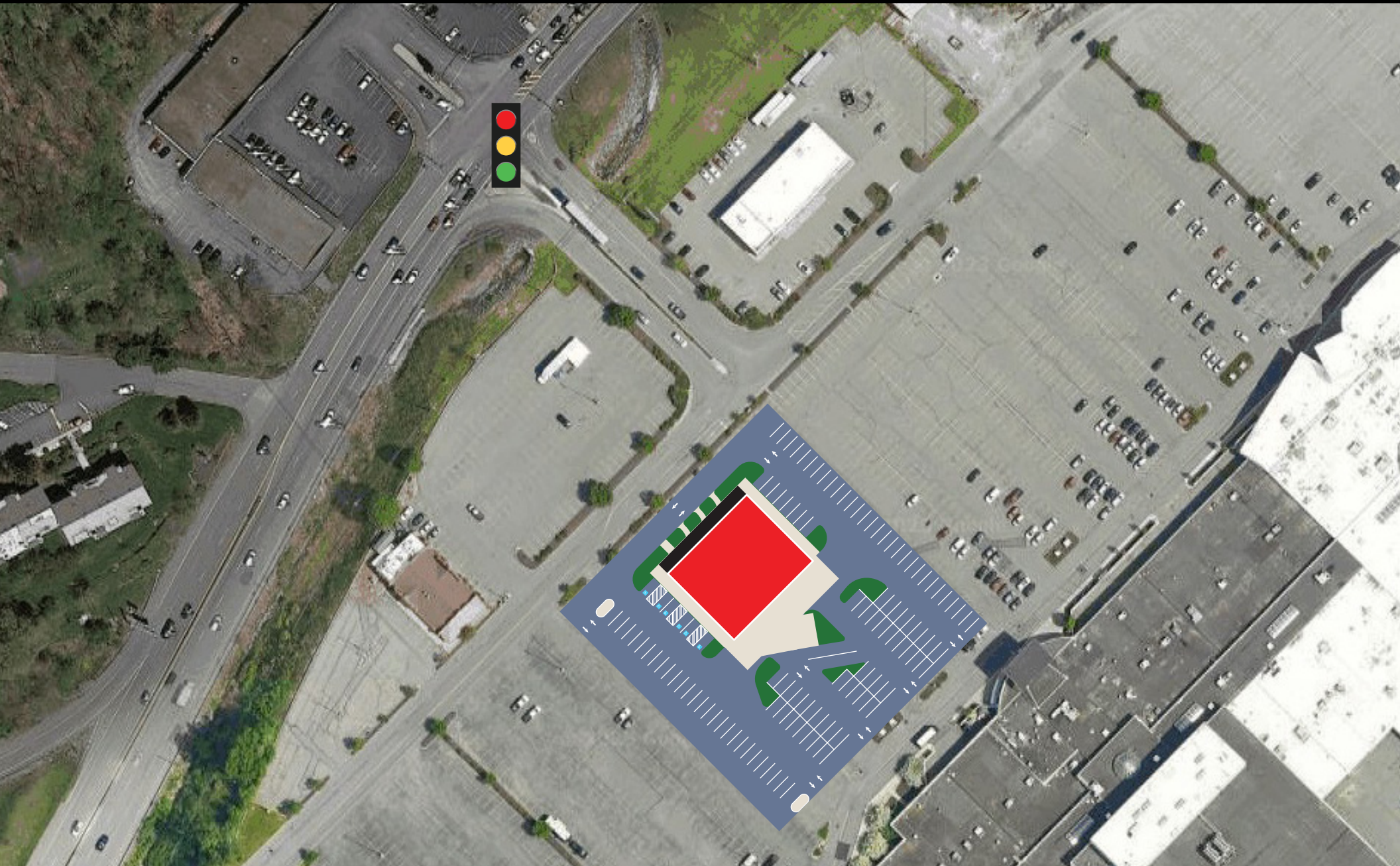


COMMERCIAL BROKERAGE. *Redefined.*

# VIEWMONT MALL OUTPARCEL

SCRANTON, PA | 18508

± 1,500 - 10,000 SF  
FOR **LEASE**



Justin Willits | Cale Bruso | Francesco Conigliaro | Brad Rohrbaugh | Chad Stine  
For Lease Information: 717.843.5555 | Learn more online at [www.bennettwilliams.com](http://www.bennettwilliams.com)

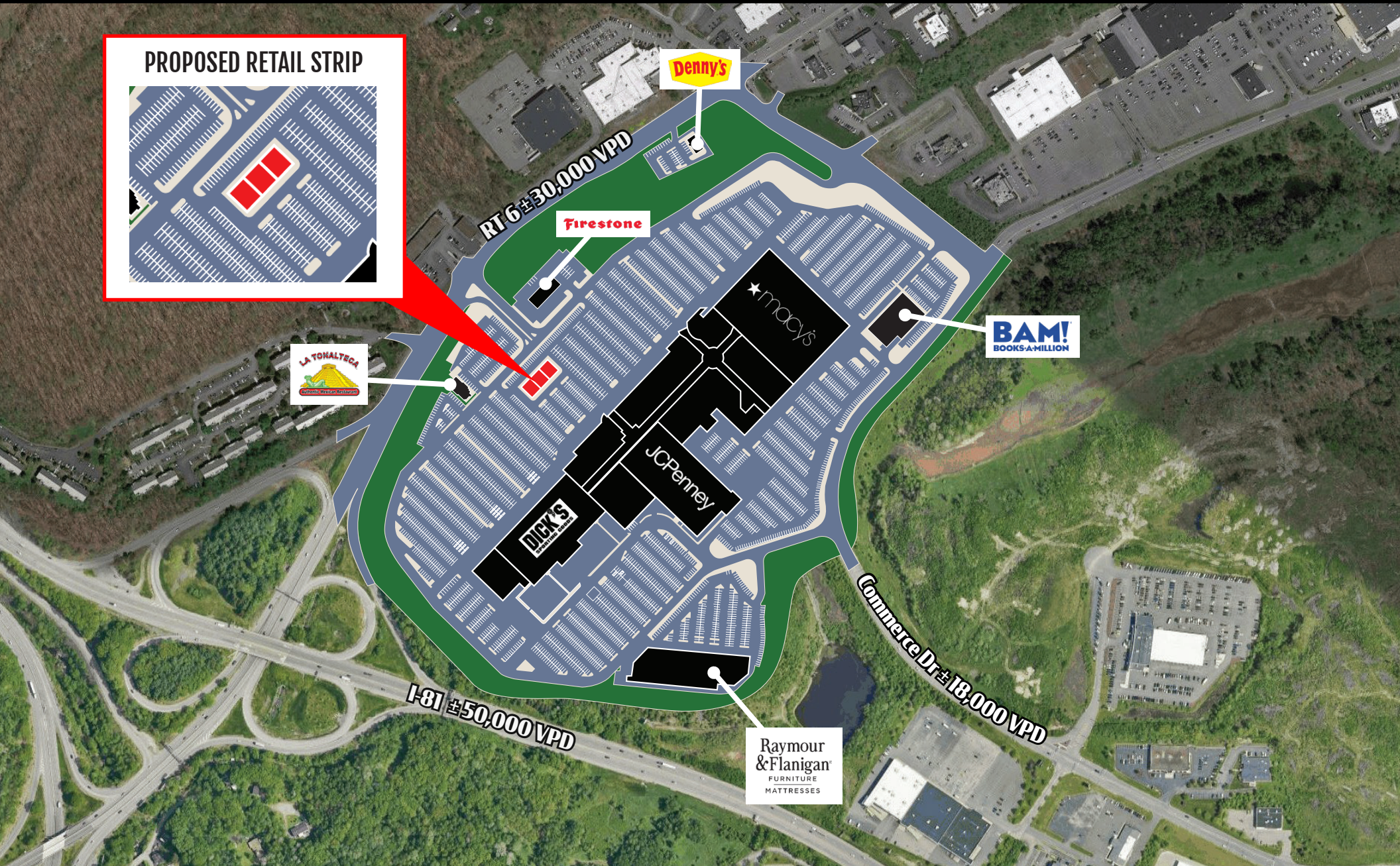


COMMERCIAL BROKERAGE. *Redefined.*

# VIEWMONT MALL OUTPARCEL

SCRANTON, PA | 18508

± 1,500 - 10,000 SF  
FOR LEASE



Justin Willits | Cale Bruso | Francesco Conigliaro | Brad Rohrbaugh | Chad Stine  
For Lease Information: 717.843.5555 | Learn more online at [www.bennettwilliams.com](http://www.bennettwilliams.com)



COMMERCIAL BROKERAGE. *Redefined.*

# VIEWMONT MALL OUTPARCEL

± 1,500 - 10,000 SF  
FOR LEASE

SCRANTON, PA | 18508

## MARKET OVERVIEW



Justin Willits | Cale Bruso | Francesco Conigliaro | Brad Rohrbaugh | Chad Stine  
For Lease Information: 717.843.5555 | Learn more online at [www.bennettwilliams.com](http://www.bennettwilliams.com)

ACTIVE MEMBER OF:  
RETAIL BROKERS NETWORK

COMMERCIAL BROKERAGE. *Redefined.*



# ABOUT SCRANTON, PENNSYLVANIA...

- Quality education is one of the region's top priorities. Home to public, technical, private and higher education institutions.
- Outdoor paradise with four seasons of scenery to explore through skiing, swimming, hiking, biking, hunting, fishing, golfing, & more.
- Hub of innovative business activity offering an award winning workforce, low operating costs and a booming business climate.
- Wilkes Barre-Scranton International Airport offers daily direct service to Atlanta, Charlotte, Chicago, Detroit, Newark, Orlando, & Philadelphia.



92,388



\$75,851



37,476



41,317

## OUR LOCATIONS:

### YORK OFFICE:

3528 Concord Rd.  
York, PA 17402

### LANCASTER OFFICE:

150 Farmington Lane, Suite 201  
Lancaster, PA 17601

### EXTON OFFICE:

1 E. Uwchlan Ave.  
Suite 409, Exton, PA 19341

### STATE COLLEGE OFFICE:

330 Innovation Blvd, Suite 205  
State College, PA 16803

### WEST CHESTER OFFICE:

107 E Chestnut St, Suite 1  
West Chester, PA 19380

### NEW JERSEY OFFICE:

236 E. Route 38, Suite 130  
Moorestown, NJ 08057

## LISTING AGENTS:



### JUSTIN WILLITS

JWillits@bennettwilliams.com



### CALE BRUSO

CBruso@bennettwilliams.com



### FRANCESCO CONIGLIARO

FConigliaro@bennettwilliams.com



### BRAD ROHRBAUGH

BRohrbaugh@bennettwilliams.com



### CHAD STINE

CStine@bennettwilliams.com

### CONTACT US

717.843.5555 | [www.bennettwilliams.com](http://www.bennettwilliams.com)



## About Bennett Williams

Since its founding in 1956, Bennett Williams Commercial, Inc. has offered full Commercial Real Estate services to the Central Pennsylvania region and beyond. We have served thousands of commercial, industrial and retail clients as we have grown in size and reputation. With our team of both experienced and knowledgeable executives as well as young and energetic professionals, we have the team to handle any commercial real estate need.

Bennett Williams is a member of the Retail Brokers Network (RBN), a partnership of the best regional retail brokerage firms servicing all of the major markets across the United States. Our affiliates are handpicked ensuring that our clients receive top quality service and representation in any market they need help in, with 61 offices across 65+ markets and 700+ members.

