

# VIEWMONT MALL OUTPARCEL

100 VIEWMONT MALL | SCRANTON, PA | 18508



Site

RT 6 ± 30,000 VPD

± 1,500-10,000 SF AVAILABLE | FOR LEASE

## NEARBY RETAILERS



**BW** COMMERCIAL  
Abe Khan | Justin Willits | Cale Brusco | Francesco Conigliaro | Brad Rohrbaugh | Chad Stine  
For Lease Information: 717.843.5555 | Learn more online at [www.bennettwilliams.com](http://www.bennettwilliams.com)

ACTIVE MEMBER OF:  
**RETAIL** BROKERS NETWORK

COMMERCIAL BROKERAGE. *Redefined.*

# VIEWMONT MALL OUTPARCEL

SCRANTON, PA | 18508

± 1,500 - 10,000 SF  
FOR **LEASE**

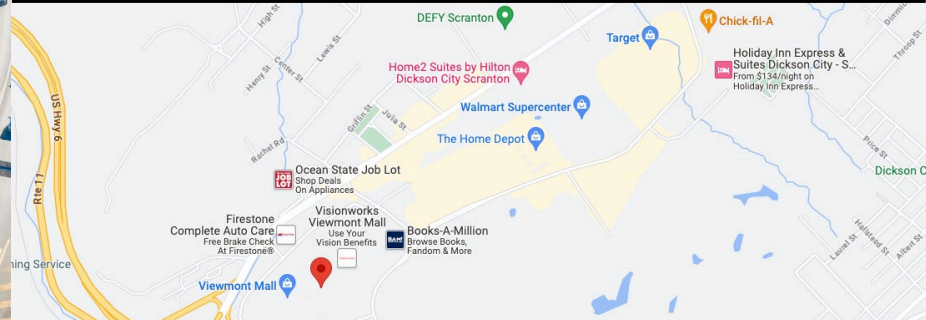
## OVERVIEW

Positioned at the crossroads of five interstate highways with regional access from I-81, I-84, I-380, Route 6 and the PA Turnpike (I-476), the outparcel at the Viewmont Mall offers a tremendous opportunity to any retailer looking to enter the Dickson City/Scranton retail landscape. The Mall's intersection at I-81 and Route 6 delivers 76,000 vehicles per day, offering access and visibility to a prospective tenant. Strategically positioned in the heart of Dickson City's retail market, Viewmont Mall is the home to the likes of JCPenney, Dick's Sporting Goods, Macy's, HomeGoods, Old Navy, Ulta Beauty, Field & Stream, and more! Contact our team for more information!



DEMOGRAPHICS	3 MILE	5 MILE	7 MILE
TOTAL POPULATION	51,397	133,792	160,651
TOTAL EMPLOYEES	22,779	61,111	72,199
AVERAGE HHI	\$84,410	\$85,824	\$87,533
TOTAL HOUSEHOLDS	21,323	55,406	66,465

TRAFFIC COUNTS: RT 6 ± 30,000 VPD | I-81 ± 50,000 VPD



Abe Khan | Justin Willits | Cale Bruso | Francesco Conigliaro | Brad Rohrbaugh | Chad Stine  
For Lease Information: 717.843.5555 | Learn more online at [www.bennettwilliams.com](http://www.bennettwilliams.com)

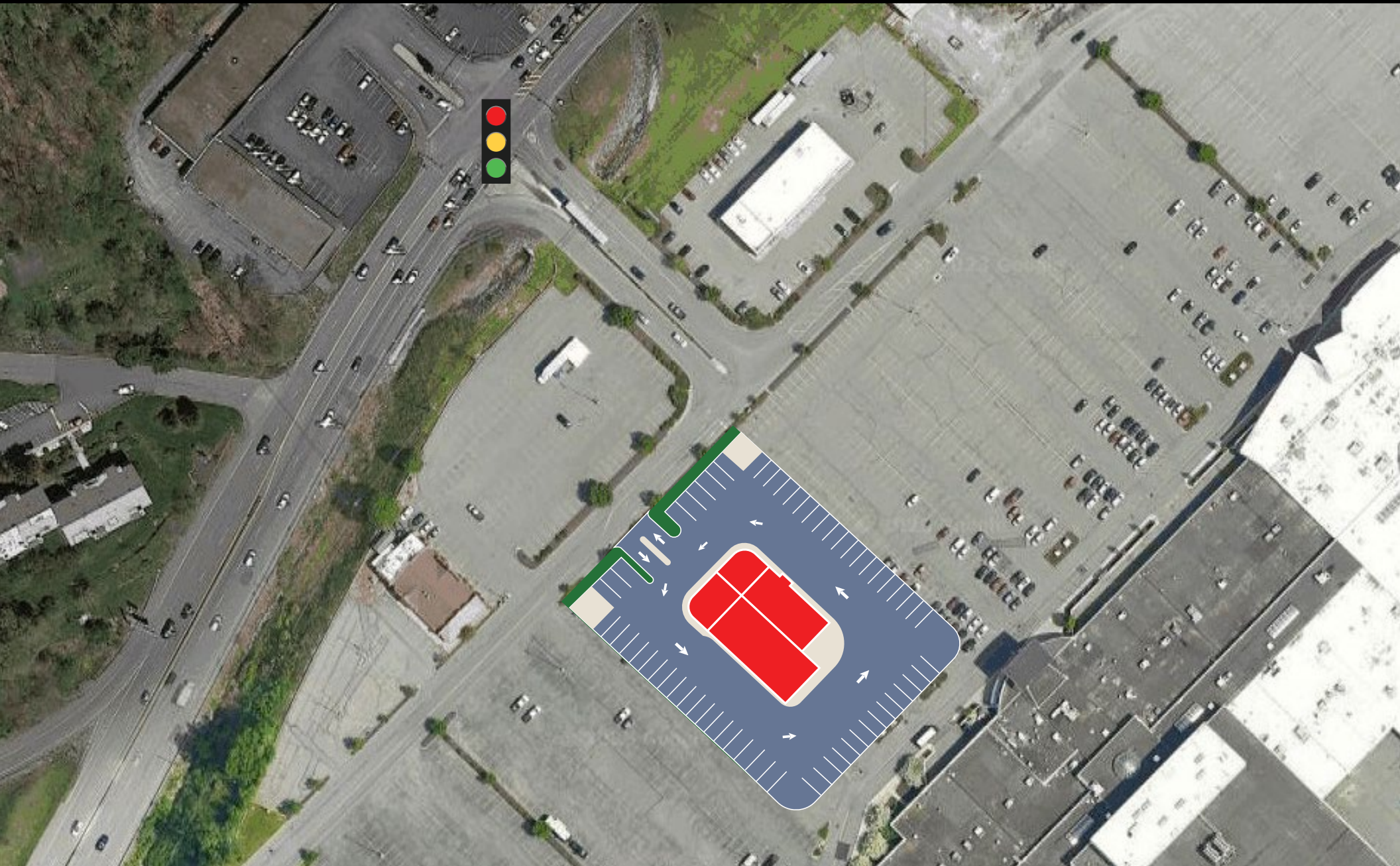


COMMERCIAL BROKERAGE. *Redefined.*

# VIEWMONT MALL OUTPARCEL

SCRANTON, PA | 18508

± 1,500 - 10,000 SF  
FOR LEASE



Abe Khan | Justin Willits | Cale Bruso | Francesco Conigliaro | Brad Rohrbaugh | Chad Stine  
For Lease Information: 717.843.5555 | Learn more online at [www.bennettwilliams.com](http://www.bennettwilliams.com)

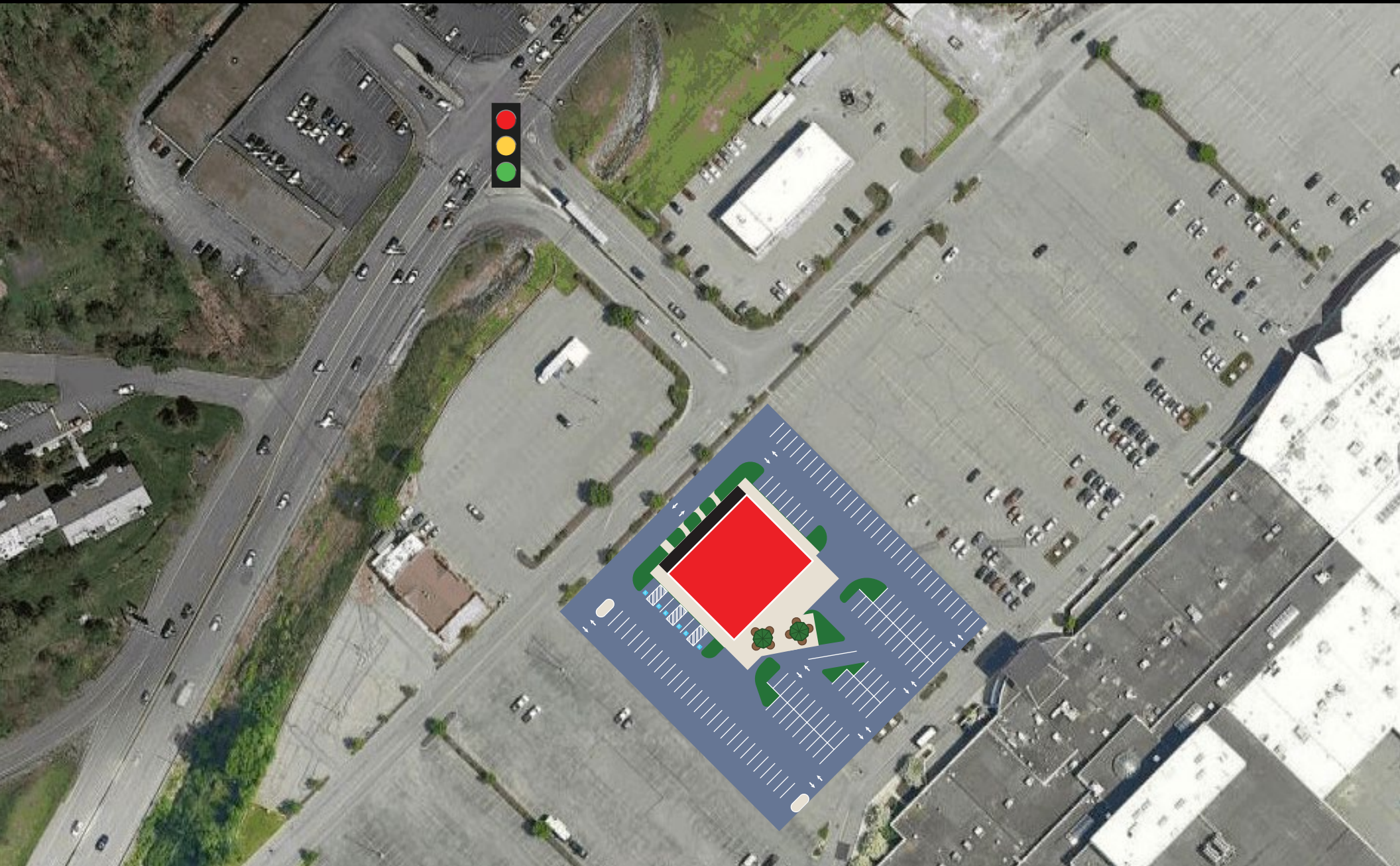


COMMERCIAL BROKERAGE. *Redefined.*

# VIEWMONT MALL OUTPARCEL

SCRANTON, PA | 18508

± 1,500 - 10,000 SF  
FOR **LEASE**



Abe Khan | Justin Willits | Cale Bruso | Francesco Conigliaro | Brad Rohrbaugh | Chad Stine  
For Lease Information: 717.843.5555 | Learn more online at [www.bennettwilliams.com](http://www.bennettwilliams.com)

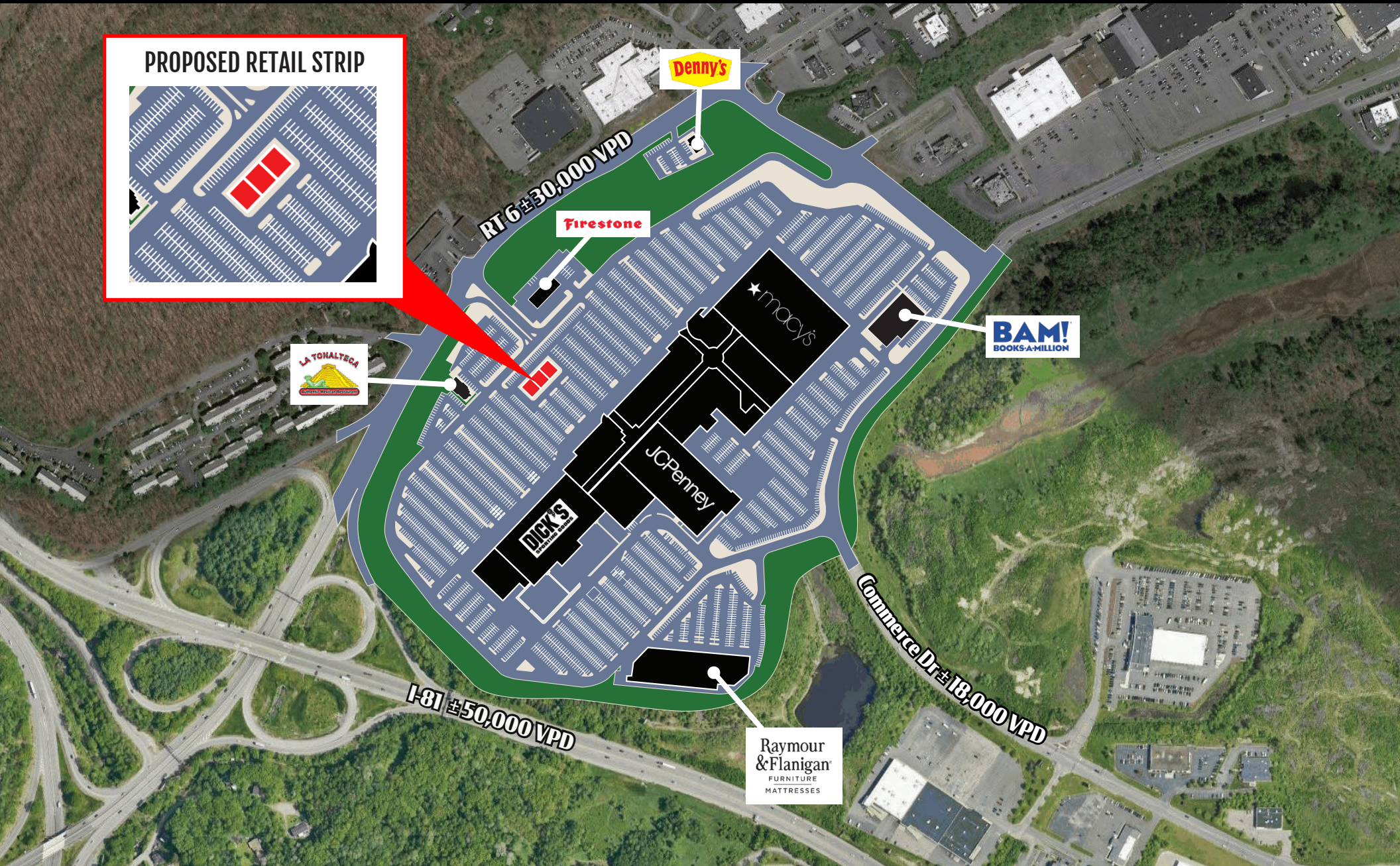


COMMERCIAL BROKERAGE. *Redefined.*

# VIEWMONT MALL OUTPARCEL

SCRANTON, PA | 18508

± 1,500 - 10,000 SF  
FOR LEASE



Abe Khan | Justin Willits | Cale Bruso | Francesco Conigliaro | Brad Rohrbaugh | Chad Stine  
For Lease Information: 717.843.5555 | Learn more online at [www.bennettwilliams.com](http://www.bennettwilliams.com)



COMMERCIAL BROKERAGE. *Redefined.*

# VIEWMONT MALL OUTPARCEL

SCRANTON, PA | 18508

± 1,500 - 10,000 SF  
FOR LEASE

## MARKET OVERVIEW



Abe Khan | Justin Willits | Cale Brusio | Francesco Conigliaro | Brad Rohrbaugh | Chad Stine  
For Lease Information: 717.843.5555 | Learn more online at [www.bennettwilliams.com](http://www.bennettwilliams.com)

ACTIVE MEMBER OF:  
**RETAIL** BROKERS NETWORK

COMMERCIAL BROKERAGE. *Redefined.*



# ABOUT SCRANTON, PENNSYLVANIA...

- Quality education is one of the region's top priorities. Home to public, technical, private and higher education institutions.
- Outdoor paradise with four seasons of scenery to explore through skiing, swimming, hiking, biking, hunting, fishing, golfing, & more.
- Hub of innovative business activity offering an award winning workforce, low operating costs and a booming business climate.
- Wilkes Barre-Scranton International Airport offers daily direct service to Atlanta, Charlotte, Chicago, Detroit, Newark, Orlando, & Philadelphia.



92,388



\$75,851



37,476



41,317

# About Bennett Williams



Since its founding in 1956, Bennett Williams Commercial, Inc. has offered full Commercial Real Estate services to the Central Pennsylvania region and beyond. We have served thousands of commercial, industrial and retail clients as we have grown in size and reputation. With our team of both experienced and knowledgeable executives as well as young and energetic professionals, we have the team to handle any commercial real estate need.

At Bennett Williams, your investments are always in good hands. Our retail Investment sales group provides top notch investment sales services for all categories of retail investments for both buyers and sellers alike, whether institutional or local, throughout the Central Pennsylvania landscape. Whether the asset is a single or multi-tenant, we pride ourselves in going above and beyond the expectations of the client to achieve maximum results. With over 60 years under our belt, and over 25 licensed real estate professionals, we possess the knowledge, experience, and dedication trusted by many in the investment sales segment of the industry.



Bennett Williams is a member of the Capital Markets Real Estate Network, a nationwide network of professionals dedicated to, and specializing in the capital markets segment of commercial real estate. CMRE is comprised of the most highly-qualified, best-experienced independent Capital Market real estate professionals.



## LISTING AGENTS:

### Abe Khan

AKhan@bennettwilliams.com

### Justin Willits

JWillits@bennettwilliams.com

### Cale Bruso

CBruso@bennettwilliams.com

### Francesco Conigliaro

FConigliaro@bennettwilliams.com

### Brad Rohrbaugh

BRohrbaugh@bennettwilliams.com

### Chad Stine

CStine@bennettwilliams.com

## OUR LOCATIONS:

### YORK OFFICE:

3528 Concord Rd.  
York, PA 17402

### LANCASTER OFFICE:

150 Farmington Lane, Suite 201  
Lancaster, PA 17601

### CONTACT US

717.843.5555 | [www.bennettwilliams.com](http://www.bennettwilliams.com)

### EXTON OFFICE:

1 E. Uwchlan Ave.  
Suite 409, Exton, PA 19341

### NEW JERSEY OFFICE:

236 E. Route 38, Suite 130  
Moorestown, NJ 08057

### WILLIAMSPORT OFFICE:

1000 Commerce Park Dr, Suite 310  
Williamsport, PA 17701

### WEST CHESTER OFFICE:

107 E Chestnut St, Suite 107  
West Chester, PA 19380

