

— 2456 —

SANS SOUCI PARKWAY

WILKES BARRE, PA - 18706

SITE

± 18,000 VPD

±1,200-2,400 SF
FOR LEASE



Ashlee Lehman | Blake Shaffer | Brad Rohrbaugh | Chad Stine
For Lease Information: 717.843.5555 | Learn more online at www.bennettwilliams.com



COMMERCIAL BROKERAGE. *Redefined.*

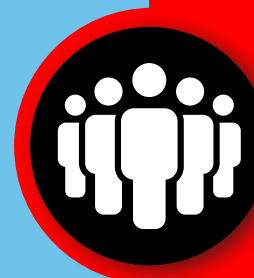
2456 SAN SOUCI PARKWAY

WILKES BARRE, PA | 18706

±1,200-2,400 SF
FOR LEASE

PROPERTY OVERVIEW

2456 Sans Souci Parkway is a 37,520 square foot shopping center located in Wilkes-Barre, PA. The property is ideally positioned near the on/off ramp for Route 29, with easy access to Route 11 and Interstate 81. The site benefits from ample parking, great visibility and exposure to the market, and signage opportunities. Nearby National retailers include Goodwill, Weis, Burger King, CVS, and Rite Aid. The center is also located near the area's industrial hub which employees a majority of the area's workforce. This is a great opportunity for a retailer who is looking to join Tractor Supply at this neighborhood shopping center.



POPULATION
3 MILE- 25,547
5 MILE- 62,339
7 MILE- 129,491



EMPLOYEES
3 MILE- 8,831
5 MILE- 16,352
7 MILE- 45,914



AVERAGE HHI
3 MILE- \$76,273
5 MILE- \$81,903
7 MILE- \$82,855



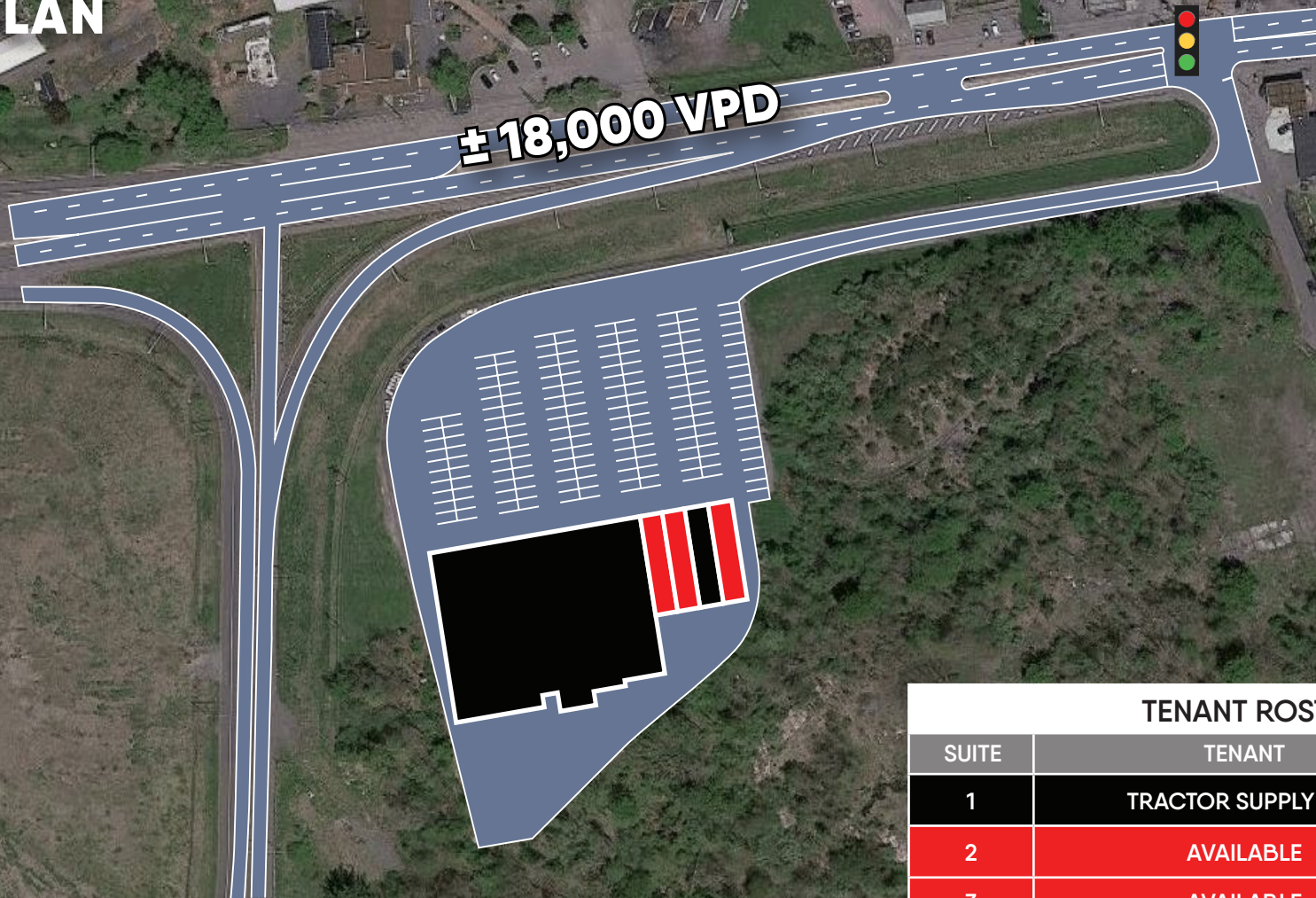
HOUSEHOLDS
3 MILE- 10,782
5 MILE- 25,855
7 MILE- 51,799

2456 SAN SOUCI PARKWAY

WILKES BARRE, PA | 18706

±1,200-2,400 SF
FOR LEASE

SITE PLAN



TENANT ROSTER

SUITE	TENANT	SF
1	TRACTOR SUPPLY CO.	32,000
2	AVAILABLE	1,200
3	AVAILABLE	1,200
4	DUNDEE LAUNDROMAT	1,520
5	AVAILABLE	1,600



Ashlee Lehman | Blake Shaffer | Brad Rohrbaugh | Chad Stine
For Lease Information: 717.843.5555 | Learn more online at www.bennettwilliams.com



COMMERCIAL BROKERAGE. *Redefined.*

2456 SAN SOUCI PARKWAY

WILKES BARRE, PA | 18706

±1,200-2,400 SF
FOR LEASE

MARKET OVERVIEW



Ashlee Lehman | Blake Shaffer | Brad Rohrbaugh | Chad Stine
For Lease Information: 717.843.5555 | Learn more online at www.bennettwilliams.com



COMMERCIAL BROKERAGE. *Redefined.*

Bennett Williams

COMMERCIAL REAL ESTATE

OUR LOCATIONS:

YORK OFFICE:

3528 Concord Rd.
York, PA 17402

LANCASTER OFFICE:

150 Farmington Lane, Suite 201
Lancaster, PA 17601

EXTON OFFICE:

1 E. Uwchlan Ave.
Suite 409, Exton, PA 19341

WILLIAMSPORT OFFICE:

1000 Commerce Park Dr, Suite 310
Williamsport, PA 17701

WEST CHESTER OFFICE:

107 E Chestnut St, Suite 107
West Chester, PA 19380

NEW JERSEY OFFICE:

236 E. Route 38, Suite 130
Moorestown, NJ 08057

LISTING AGENTS:



Ashlee Lehman

ALehman@bennettwilliams.com



Blake Shaffer

BShaffer@bennettwilliams.com



Brad Rohrbaugh

BRohrbaugh@bennettwilliams.com



Chad Stine

CStine@bennettwilliams.com

CONTACT US

717.843.5555 | www.bennettwilliams.com

LANDLORD
REPRESENTATION

TENANT
REPRESENTATION

INVESTMENT
SALES

PROPERTY
MANAGEMENT



About Bennett Williams

Since its founding in 1956, Bennett Williams Commercial, Inc. has offered full Commercial Real Estate services to the Central Pennsylvania region and beyond. We have served thousands of commercial, industrial and retail clients as we have grown in size and reputation. With our team of both experienced and knowledgeable executives as well as young and energetic professionals, we have the team to handle any commercial real estate need.

Bennett Williams is a member of the Retail Brokers Network (RBN), a partnership of the best regional retail brokerage firms servicing all of the major markets across the United States. Our affiliates are handpicked ensuring that our clients receive top quality service and representation in any market they need help in, with 61 offices across 65+ markets and 700+ members.

