

FOR LEASE

9,037 SF
Storefront Retail Space

20229 Rt 19
Cranberry, PA 16066



CONTACT:

Don Gill | 847.630.1070 | gill@vestian.com
Dan Piskadlo | 917.363.0744 | piskadlo@vestian.com
Adam Hagerman | 717.843.5555 | ahagerman@bennettwilliams.com
Cale Bruso | 717.843.5555 | cbruso@bennettwilliams.com
Jane McGill | 610.321.1111 | jmcgill@bennettwilliams.com
Anthony Curcio | 610.321.1111 | acurcio@bennettwilliams.com

VESTIAN

Bennett WILLIAMS
COMMERCIAL REAL ESTATE

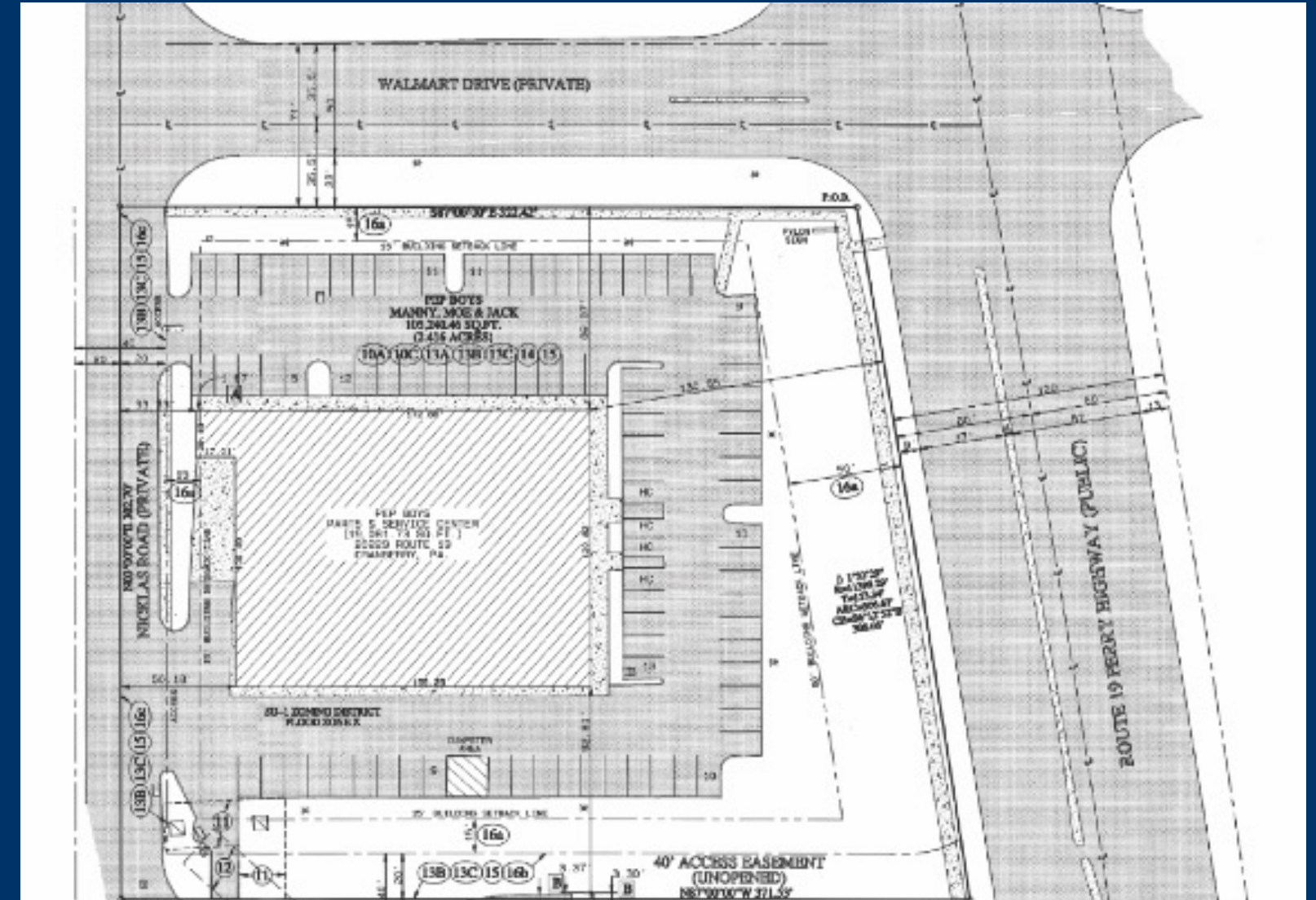
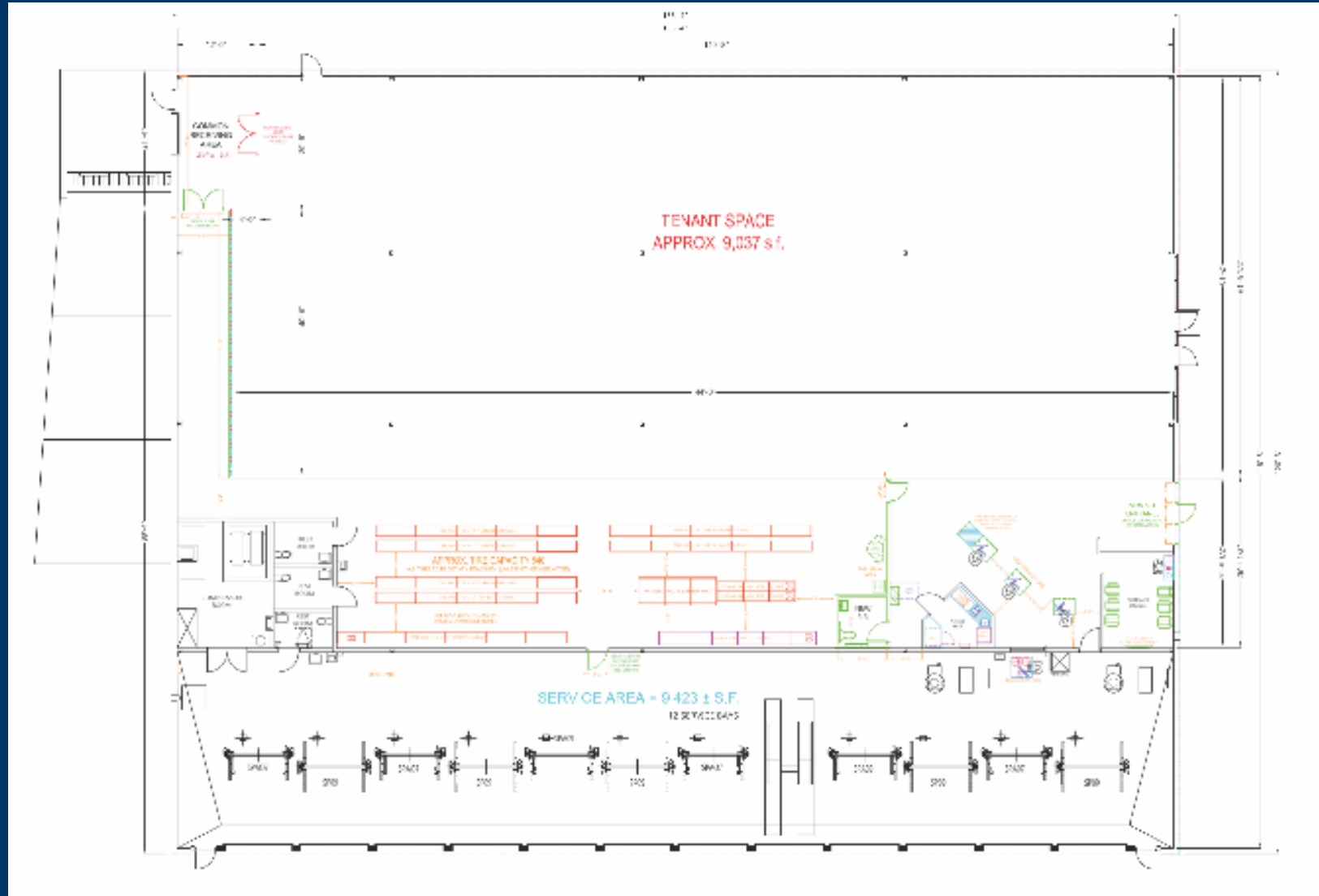
20229 Rt 19

PROPERTY OVERVIEW

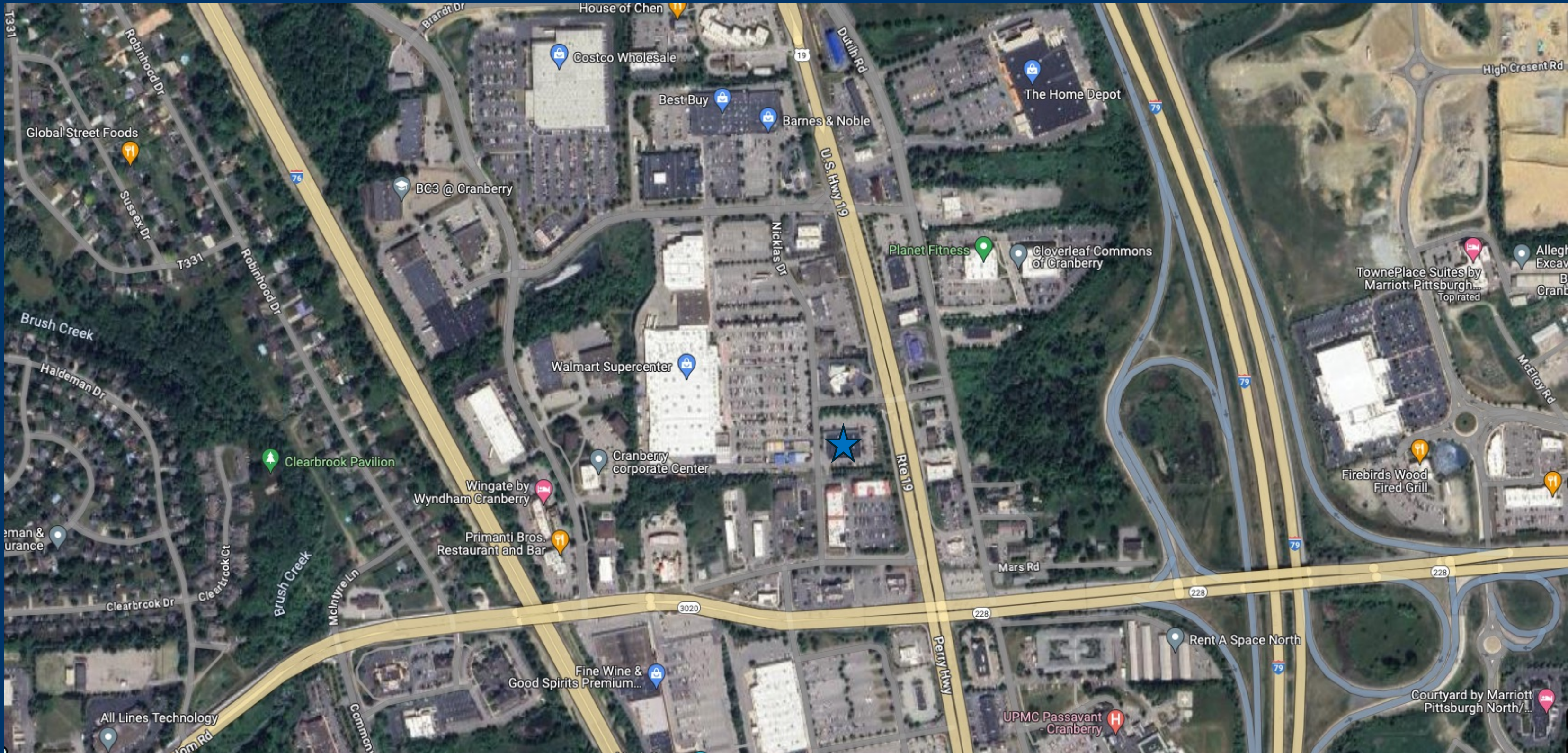
Address	20229 Rt 19 Cranberry, PA 16066
Available SF	9,037 SF
Occupied SF	9,423 SF
Total Building SF	18,460 SF
Year Built	1996
Possession	Immediate
Signage	Building Signage Available
Asking Rate	Contact Broker
Comments	<ul style="list-style-type: none">• Dedicated Main Entrance• Ceiling Height (to deck) 22'• Sprinklered• HVAC throughout• Gas Service• Municipal Water/Sewer



20229 Rt 19



20229 Rt 19



Don Gill
847.630.1070
gill@vestian.com

Dan Piskadlo
917.363.0744
piskadlo@vestian.com

Adam Hagerman
717.843.5555
ahagerman@bennettwilliams.com

Cale Bruso
717.843.5555
cbruso@bennettwilliams.com

Jane McGill
610.321.1111
jmcgill@bennettwilliams.com

Anthony Curcio
610.321.1111
acurcio@bennettwilliams.com

VESTIAN

Bennett WILLIAMS
COMMERCIAL REAL ESTATE



FOR LEASING INFORMATION, CONTACT

Don Gill
847.630.1070
gill@vestian.com

Dan Piskadlo
917.363.0744
piskadlo@vestian.com

Adam Hagerman
717.843.5555
ahagerman@bennettwilliams.com

Cale Bruso
717.843.5555
cbruso@bennettwilliams.com

Jane McGill
610.321.1111
jmcgill@bennettwilliams.com

Anthony Curcio
610.321.1111
acurcio@bennettwilliams.com

VESTIAN

Bennett WILLIAMS
COMMERCIAL REAL ESTATE

©2024 Vestian. All rights reserved. The information contained within this report is gathered from multiple sources believed to be reliable but has not been verified for accuracy or completeness. You should conduct a careful, independent investigation of the property and verify all information. Any reliance on this information is solely at your own risk. Photos herein are the property of their respective owners. Use of these images without the express written consent of the owner is prohibited.

Vestian and the Vestian logo are service marks of Vestian Global Workplace Services, LLC.
All other marks displayed on this document are the property of their respective owners.