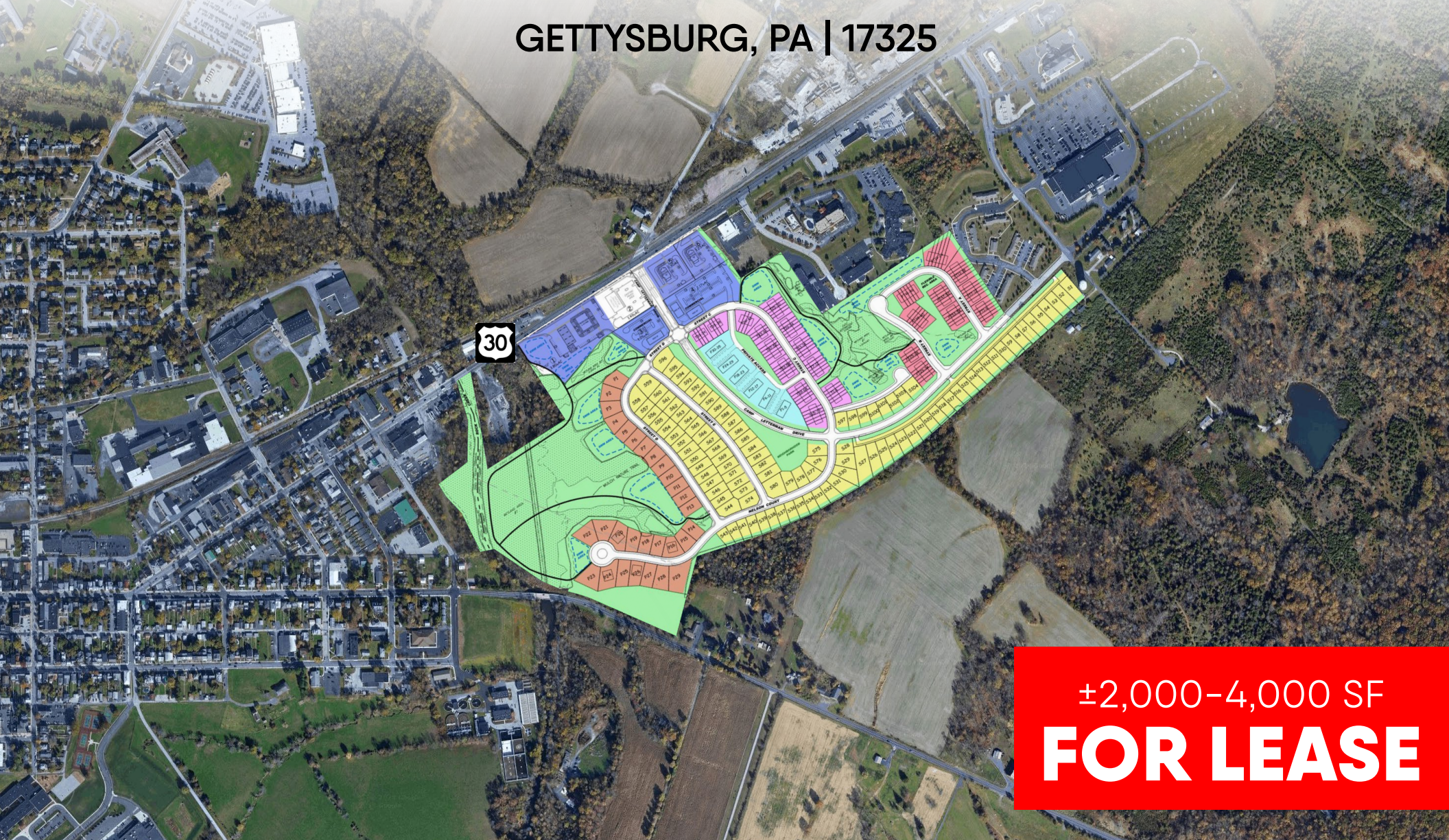


GETTYSBURG TOWNE CENTER

GETTYSBURG, PA | 17325



±2,000-4,000 SF
FOR LEASE

GETTYSBURG TOWNE CENTER

GETTYSBURG, PA | 17523

±2,000-4,000 SF
FOR LEASE

PROPERTY OVERVIEW

Gettysburg Towne Center is a redevelopment project off Route 30 in historic Gettysburg, PA. Route 30 is the main retail corridor through Gettysburg, home to the Gettysburg National Military Park commemorating the historic Civil War battle and bringing over one-million tourists to the town every year. Route 30 is a primary East/West commercial route connecting Philadelphia to Pittsburgh. Some of the major retailers currently in the Gettysburg market along this major roadway include Walmart, Marshalls, Michael's, Dollar Tree, and Starbucks, plus many more. This project will include a mix of retail and approximately 300 newly built for-sale homes. Other benefits include excellent visibility and exposure along Route 30. This is a great opportunity for retail, restaurant, and medical users who are looking to break into this growing market.



POPULATION

3 MILE- 16,298
5 MILE- 25,251
7 MILE- 33,645



EMPLOYEES

3 MILE- 9,926
5 MILE- 11,387
7 MILE- 13,161



AVERAGE HHI

3 MILE- \$109,871
5 MILE- \$107,604
7 MILE- \$107,248



HOUSEHOLDS

3 MILE- 5,850
5 MILE- 9,324
7 MILE- 12,746

GETTYSBURG TOWNE CENTER

GETTYSBURG, PA | 17523

±2,000-4,000 SF
FOR LEASE

SITE PLAN



UNIT	TENANT	AC/SF
A	PAD AVAILABLE	1.30 AC
B	PAD AVAILABLE	1.23 AC
C	AVAILABLE	4,000 SF
D	AVAILABLE	4,000 SF
E	AVAILABLE	4,000 SF
F	C-STORE PAD	3.80 AC



Blake Shaffer | Ashlee Lehman | Cale Bruso | Brad Rohrbaugh | Chad Stine
For Lease Information: 717.843.5555 | Learn more online at www.bennettwilliams.com



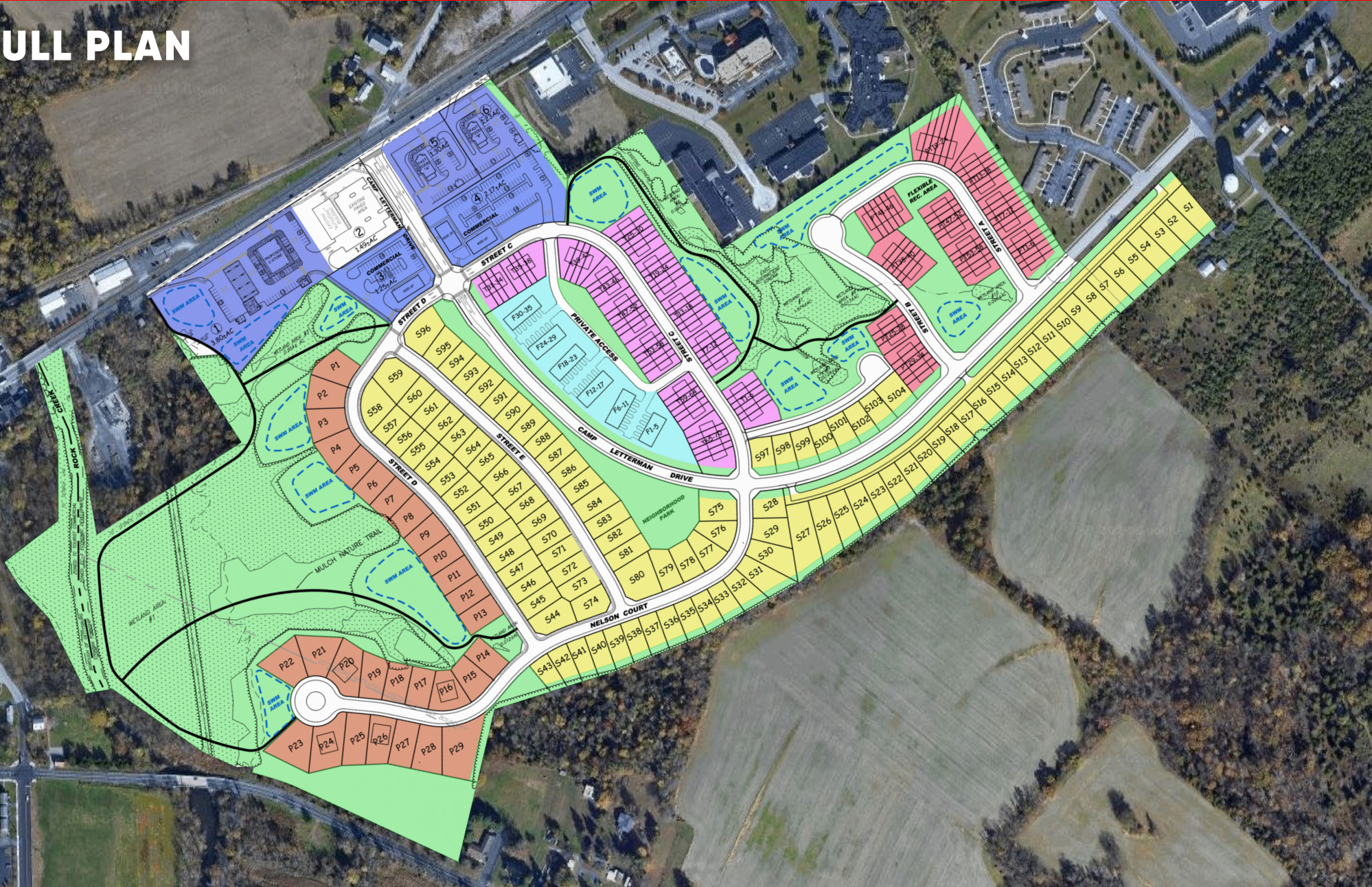
COMMERCIAL BROKERAGE. *Redefined.*

GETTYSBURG TOWNE CENTER

GETTYSBURG, PA | 17523

±2,000-4,000 SF
FOR LEASE

FULL PLAN



Blake Shaffer | Ashlee Lehman | Cale Bruso | Brad Rohrbaugh | Chad Stine
For Lease Information: 717.843.5555 | Learn more online at www.bennettwilliams.com



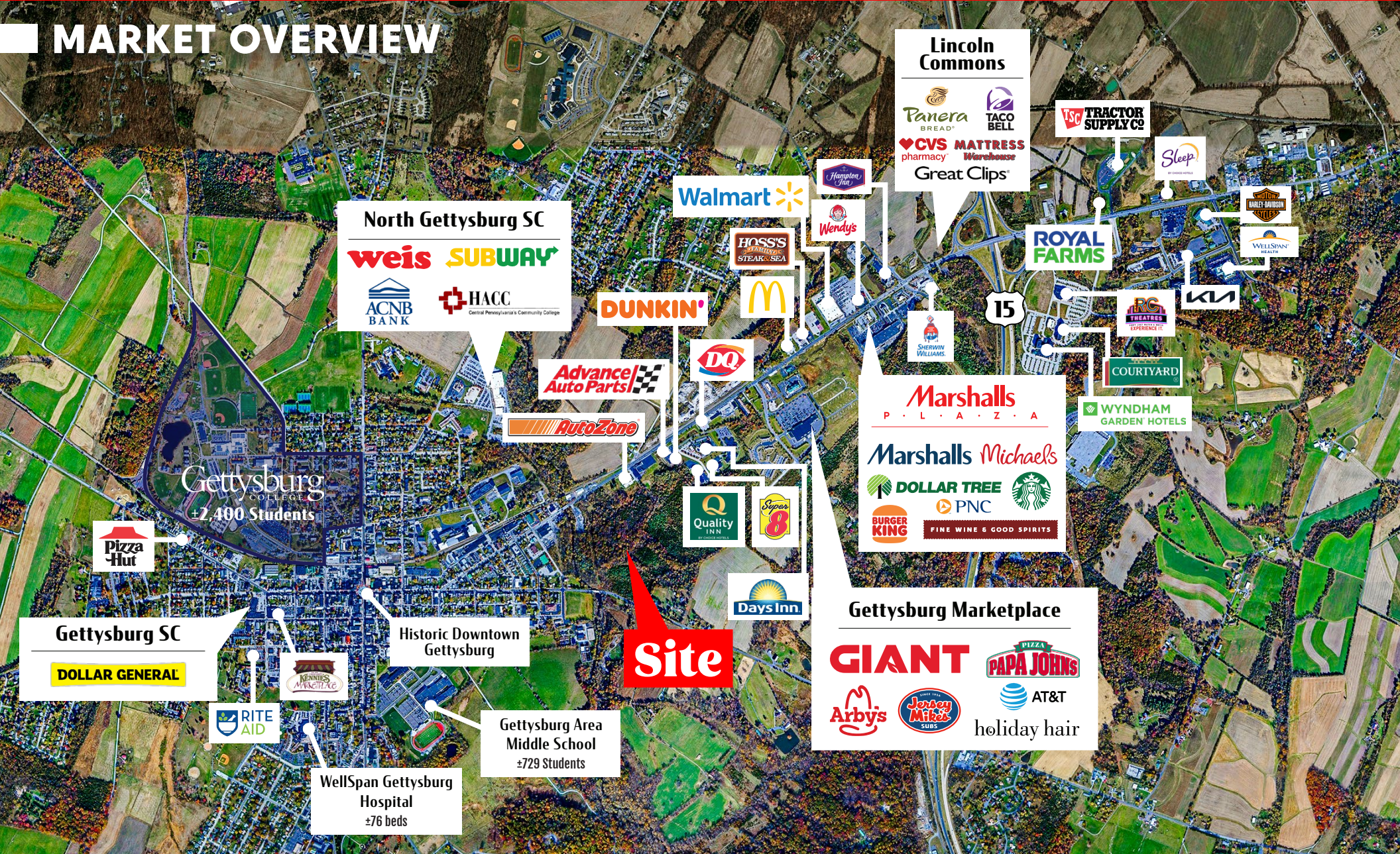
ACTIVE MEMBER OF:
RETAIL BROKERS NETWORK
COMMERCIAL BROKERAGE. *Redefined.*

GETTYSBURG TOWNE CENTER

GETTYSBURG, PA | 17523

±2,000-4,000 SF
FOR LEASE

MARKET OVERVIEW



Bennett Williams

COMMERCIAL REAL ESTATE

OUR LOCATIONS:

YORK OFFICE:

3528 Concord Rd.
York, PA 17402

LANCASTER OFFICE:

150 Farmington Lane, Suite 201
Lancaster, PA 17601

EXTON OFFICE:

1 E. Uwchlan Ave.
Suite 409, Exton, PA 19341

WILLIAMSPORT OFFICE:

1000 Commerce Park Dr, Suite 310
Williamsport, PA 17701

WEST CHESTER OFFICE:

107 E Chestnut St, Suite 107
West Chester, PA 19380

NEW JERSEY OFFICE:

236 E. Route 38, Suite 130
Moorestown, NJ 08057

LISTING AGENTS:



Blake Shaffer

BShaffer@bennettwilliams.com



Ashlee Lehman

ALehman@bennettwilliams.com



Cale Bruso

CBruso@bennettwilliams.com



Brad Rohrbaugh

BRohrbaugh@bennettwilliams.com



Chad Stine

CStine@bennettwilliams.com

CONTACT US

717.843.5555 | www.bennettwilliams.com

LANDLORD
REPRESENTATION

TENANT
REPRESENTATION

INVESTMENT
SALES

PROPERTY
MANAGEMENT



About Bennett Williams

Since its founding in 1956, Bennett Williams Commercial, Inc. has offered full Commercial Real Estate services to the Central Pennsylvania region and beyond. We have served thousands of commercial, industrial and retail clients as we have grown in size and reputation. With our team of both experienced and knowledgeable executives as well as young and energetic professionals, we have the team to handle any commercial real estate need.

Bennett Williams is a member of the Retail Brokers Network (RBN), a partnership of the best regional retail brokerage firms servicing all of the major markets across the United States. Our affiliates are handpicked ensuring that our clients receive top quality service and representation in any market they need help in, with 61 offices across 65+ markets and 700+ members.

