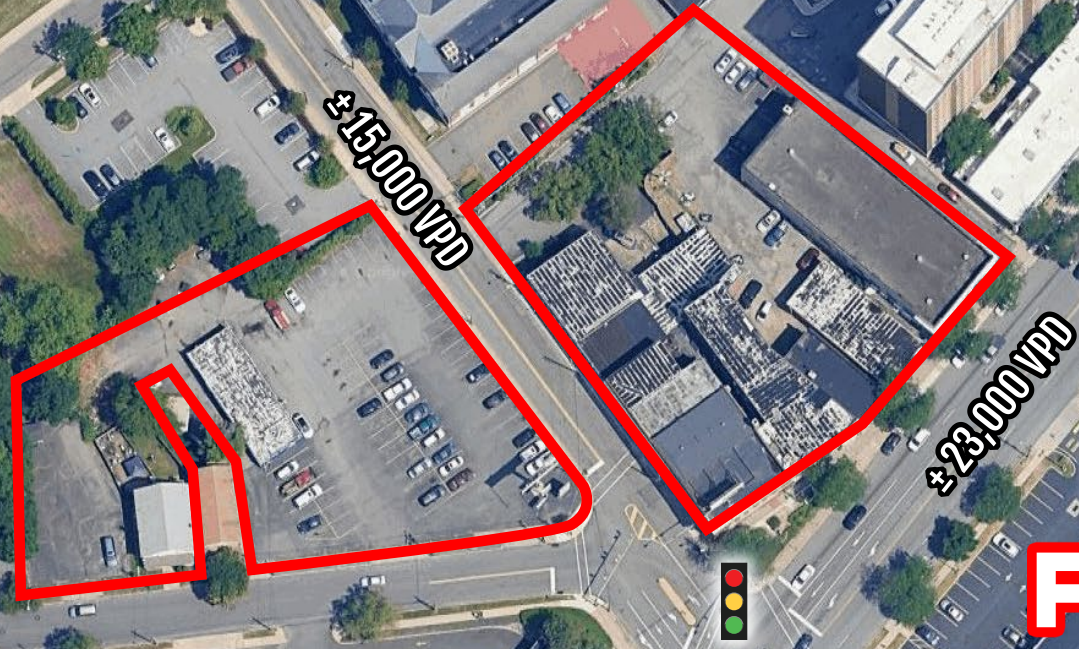


# Kingston Properties

CORNER OF WYOMING AVE & MARKET STREET



**FOR LEASE**





### PROPERTY OVERVIEW

- One of the hottest signalized corners in Kingston, PA
- Wyoming Avenue and Market Street
- Great location for any National tenant to enter this market
- Many opportunities



**POPULATION**  
3 MILE- 93,375  
5 MILE- 129,562  
7 MILE- 171,785



**EMPLOYEES**  
3 MILE- 35,441  
5 MILE- 51,590  
7 MILE- 64,216



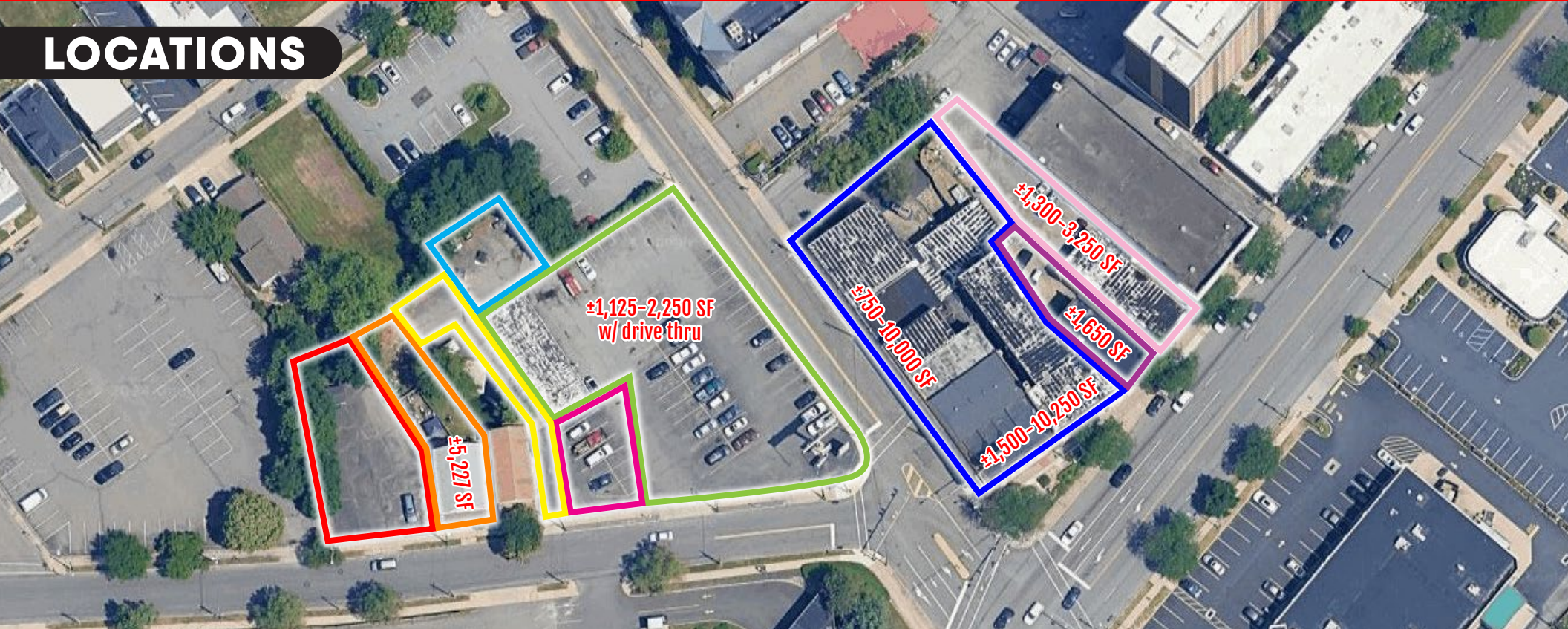
**AVERAGE HHI**  
3 MILE- \$78,593  
5 MILE- \$84,916  
7 MILE- \$89,181



**HOUSEHOLDS**  
3 MILE- 38,405  
5 MILE- 54,125  
7 MILE- 70,810



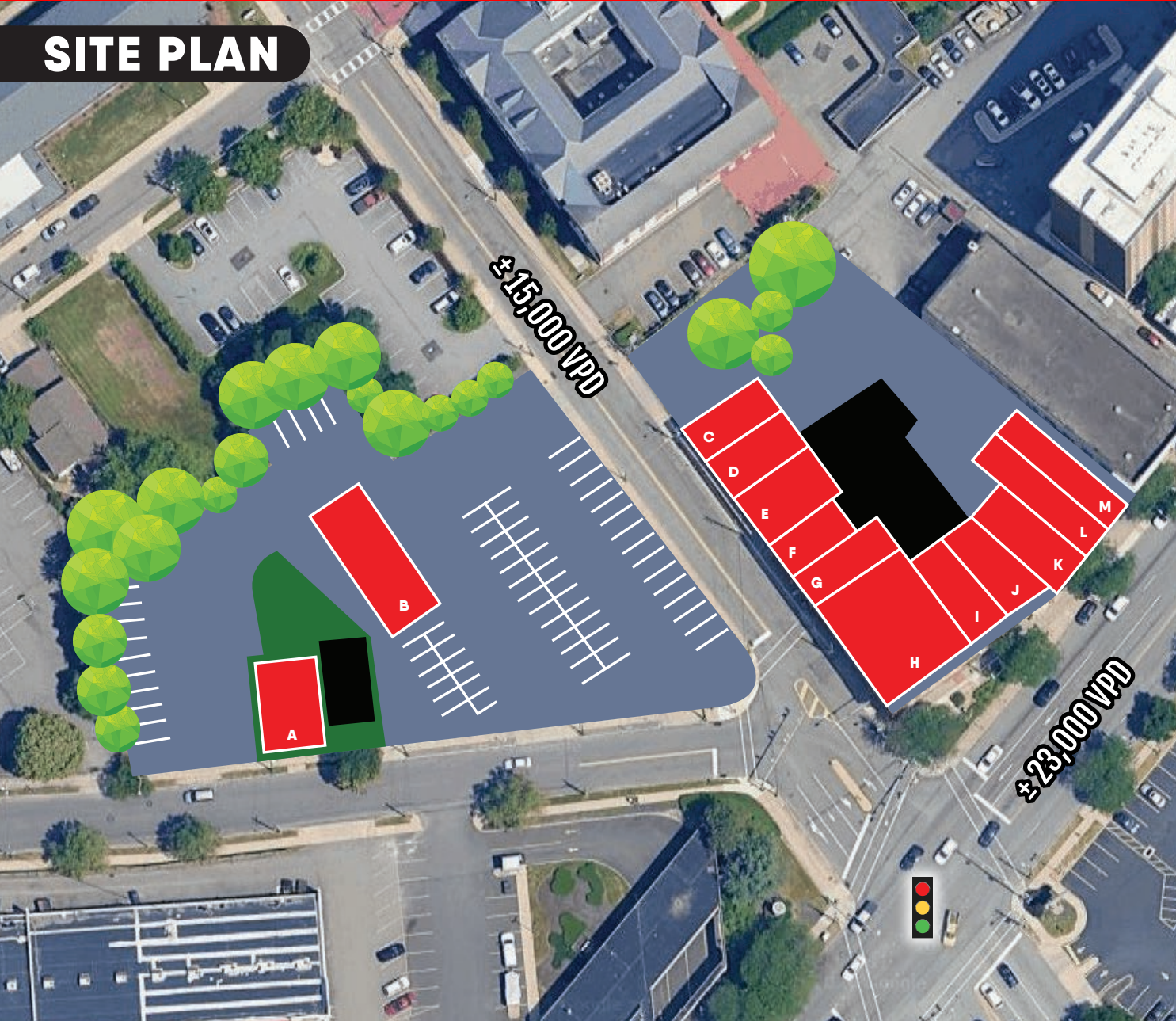
## LOCATIONS



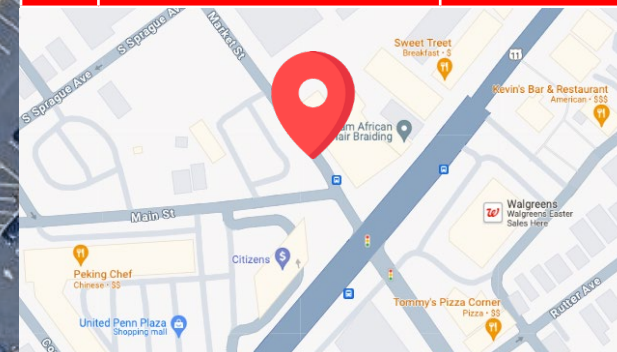
- 47 Main Street, Kingston, PA 18704
- 39-41 Market Street, Kingston, PA 18704
- 31 Main Aly, Kingston, PA 18704
- 27-29 Market Street, Kingston, PA 18704
- 688 Market Street, Kingston, PA 18704
- 726-728 Market Street, Kingston, PA 18704
- 707-216 Wyoming Ave, Kingston, PA 18704
- 220 Wyoming Ave, Kingston, PA 18704
- 222-226 Wyoming Ave, Kingston, PA 18704



## SITE PLAN



UNIT	TENANT	SF
A	39-41 Market Street	5,227
B	688 Market Street	1,125-2,250
C	707 Market Street	850
D	705 Market Street	750
E	701 Market Street	800
F	695 Market Street	1,400
G	693 Market Street	1,400
H	200-210 Market Street	4,600
I	212 Wyoming Avenue	2,500
J	214 Wyoming Avenue	1,500
K	226 Wyoming Avenue	1,300
L	228 Wyoming Avenue	1,950
M	220 Wyoming Avenue	1,650





# Kingston Properties

KINGSTON, PA | 18704

## FOR LEASE

### MARKET OVERVIEW

**DOLLAR GENERAL** holiday hair  
FINE WINE & GOOD SPIRITS **JOANN**  
**petco** **DOLLAR TREE**  
**DUNKIN'** **WELLS FARGO** **McDonald's**  
**H&R BLOCK**

**GATEWAY SHOPPING CENTER**  
**planet fitness** **FAMILY DOLLAR** **goodwill**  
**SUBWAY**





# Bennett Williams

COMMERCIAL REAL ESTATE

## OUR LOCATIONS:

### YORK OFFICE:

3528 Concord Rd.  
York, PA 17402

### LANCASTER OFFICE:

150 Farmington Lane, Suite 201  
Lancaster, PA 17601

### EXTON OFFICE:

1 E. Uwchlan Ave.  
Suite 409, Exton, PA 19341

### WILLIAMSPORT OFFICE:

1000 Commerce Park Dr, Suite 310  
Williamsport, PA 17701

### WEST CHESTER OFFICE:

107 E Chestnut St, Suite 107  
West Chester, PA 19380

### NEW JERSEY OFFICE:

236 E. Route 38, Suite 130  
Moorestown, NJ 08057

## LISTING AGENTS:



### Francesco Conigliaro

FConigliaro@bennettwilliams.com



### Abe Khan

AKhan@bennettwilliams.com



### Brad Rohrbaugh

BRohrbaugh@bennettwilliams.com



### Chad Stine

CStine@bennettwilliams.com

### CONTACT US

717.843.5555 | [www.bennettwilliams.com](http://www.bennettwilliams.com)

LANDLORD  
REPRESENTATION

TENANT  
REPRESENTATION

INVESTMENT  
SALES

PROPERTY  
MANAGEMENT



## About Bennett Williams

Since its founding in 1956, Bennett Williams Commercial, Inc. has offered full Commercial Real Estate services to the Central Pennsylvania region and beyond. We have served thousands of commercial, industrial and retail clients as we have grown in size and reputation. With our team of both experienced and knowledgeable executives as well as young and energetic professionals, we have the team to handle any commercial real estate need.

Bennett Williams is a member of the Retail Brokers Network (RBN), a partnership of the best regional retail brokerage firms servicing all of the major markets across the United States. Our affiliates are handpicked ensuring that our clients receive top quality service and representation in any market they need help in, with 61 offices across 65+ markets and 700+ members.

