

# FOR LEASE

5,516 SF

Storefront Retail Space

Building & Pylon  
Signage Available



7720 Lindbergh Blvd  
Philadelphia, PA 19153

VESTIAN

Bennett WILLIAMS  
COMMERCIAL REAL ESTATE



# 7720 Lindbergh Blvd

## Property Overview

Pep Boys holds these properties under long term ground leases. The tire and auto repair operations will continue, the former parts sales areas have already been vacated, sizes fall in the range of 3,200 to 11,500 SF.

Uses sought include medical, such as dialysis or Plasma centers, day care for children, doggie day care, discount retail, furniture, tools, hardware and automotive uses that don't compete with the tire and repair operations, such as collision centers, auto glass or auto parts.

Cash allowances can be negotiated, provided the rent is commensurate with a reasonable return on the additional investment.

- Highly visible from all directions
- Ample parking
- Typically located among nationally recognized retailers
- Size of space can be flexible

## Nearby Retailers



**DOLLAR GENERAL®**

### CONTACT

**Don Gill**

**Patrick Kobilca**

847.630.1070 | [gill@vestian.com](mailto:gill@vestian.com)

708.431.8894 | [kobilca@vestian.com](mailto:kobilca@vestian.com)

**Jane McGill**

**Anthony Curcio**

610.517.4380 | [jmcgill@bennettwilliams.com](mailto:jmcgill@bennettwilliams.com)

484.571.5764 | [acurcio@bennettwilliams.com](mailto:acurcio@bennettwilliams.com)



# 7720 Lindbergh Blvd

## PROPERTY OVERVIEW

Address	7720 Lindbergh Blvd Philadelphia, PA 19153
Available SF	5,516 SF Storefront Retail Space
Occupied SF	7,190 SF Auto Service Space
Total Building SF	12,706 SF
Possession	Immediate
Signage	Building & Pylon Signage Available
Asking Rate	Contact Broker
Comments	<ul style="list-style-type: none"><li>• Building Height 20'</li><li>• Dedicated Main Entrance</li><li>• Sprinklered</li><li>• HVAC throughout</li></ul>



### CONTACT

**Don Gill**  
**Patrick Kobilca**

847.630.1070 | [gill@vestian.com](mailto:gill@vestian.com)  
708.431.8894 | [kobilca@vestian.com](mailto:kobilca@vestian.com)

**Jane McGill**  
**Anthony Curcio**

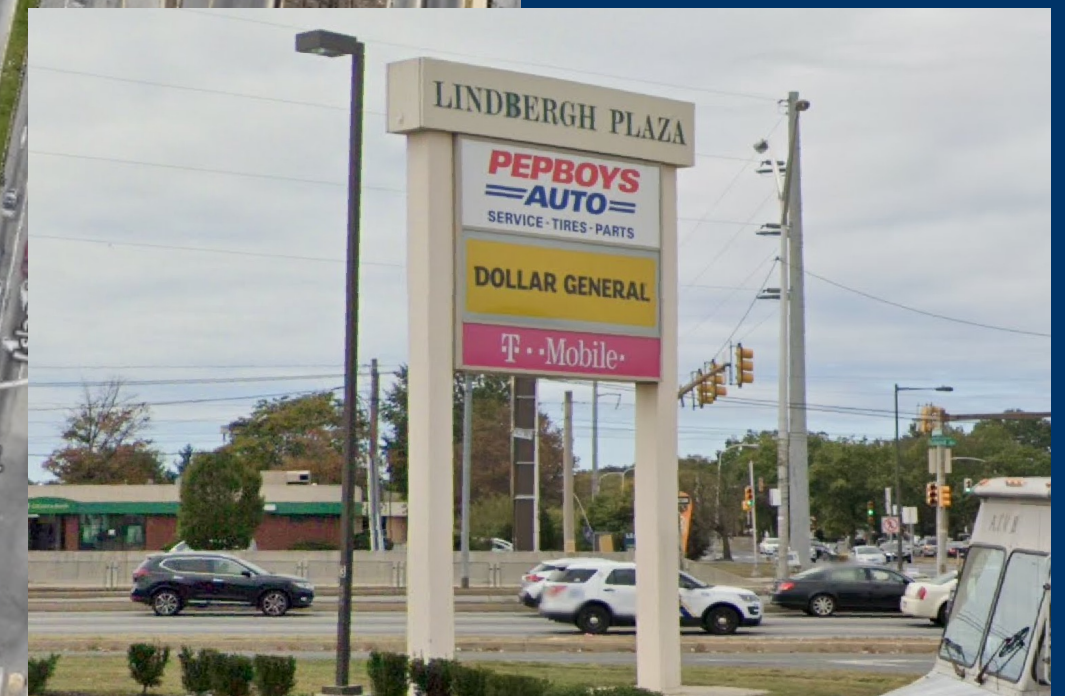
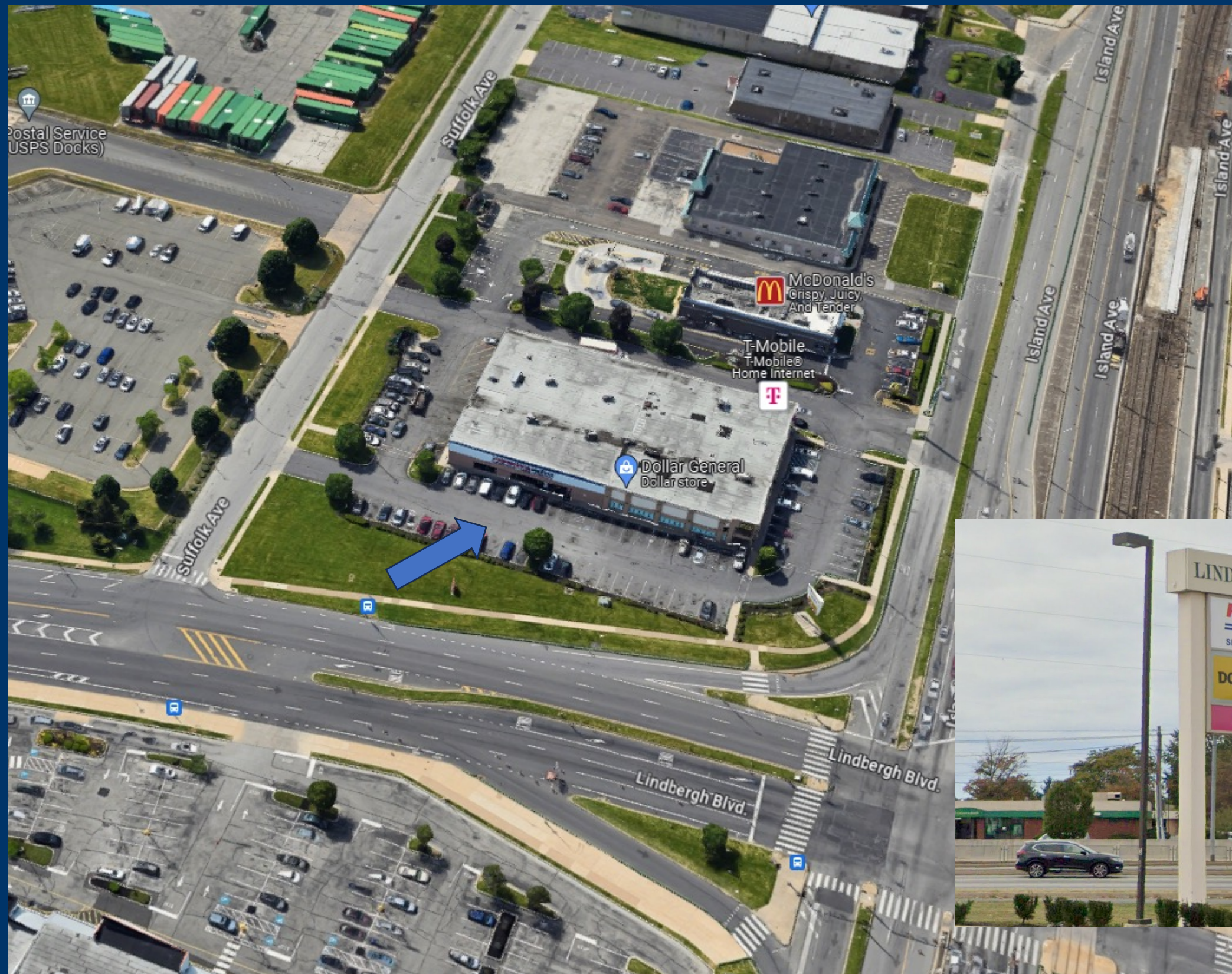
610.517.4380 | [jmcgill@bennettwilliams.com](mailto:jmcgill@bennettwilliams.com)  
484.571.5764 | [acurcio@bennettwilliams.com](mailto:acurcio@bennettwilliams.com)







# 7720 Lindbergh Blvd



## CONTACT

**Don Gill**  
**Patrick Kobilca**

847.630.1070 | [gill@vestian.com](mailto:gill@vestian.com)  
708.431.8894 | [kobilca@vestian.com](mailto:kobilca@vestian.com)

**Jane McGill**  
**Anthony Curcio**

610.517.4380 | [jmcgill@bennettwilliams.com](mailto:jmcgill@bennettwilliams.com)  
484.571.5764 | [acurcio@bennettwilliams.com](mailto:acurcio@bennettwilliams.com)



# Building & Pylon Signage Renderings



*\*Signage renderings provided for illustrative purposes only.  
Actual design and placement may vary based on location and specific property requirements.*

## CONTACT

**Don Gill**  
**Patrick Kobilca**

847.630.1070 | [gill@vestian.com](mailto:gill@vestian.com)  
708.431.8894 | [kobilca@vestian.com](mailto:kobilca@vestian.com)

**Jane McGill**  
**Anthony Curcio**

610.517.4380 | [jmcgill@bennettwilliams.com](mailto:jmcgill@bennettwilliams.com)  
484.571.5764 | [acurcio@bennettwilliams.com](mailto:acurcio@bennettwilliams.com)





**FOR LEASING INFORMATION,  
CONTACT**

**V E S T I A N**

**Bennett WILLIAMS**  
COMMERCIAL REAL ESTATE

**Don Gill**

847.630.1070

[gill@vestian.com](mailto:gill@vestian.com)

**Patrick Kobilca**

708.431.8894

[kobilca@vestian.com](mailto:kobilca@vestian.com)

**Jane McGill**

610.517.4380

[jmcgill@bennettwilliams.com](mailto:jmcgill@bennettwilliams.com)

**Anthony Curcio**

484.571.5764

[acurcio@bennettwilliams.com](mailto:acurcio@bennettwilliams.com)

©2024 Vestian. All rights reserved. The information contained within this report is gathered from multiple sources believed to be reliable but has not been verified for accuracy or completeness. You should conduct a careful, independent investigation of the property and verify all information. Any reliance on this information is solely at your own risk. Photos herein are the property of their respective owners. Use of these images without the express written consent of the owner is prohibited.

Vestian and the Vestian logo are service marks of Vestian Global Workplace Services, LLC. All other marks displayed on this document are the property of their respective owners.