

118 Eagleview Blvd

— EXTON, PA | 19341 —

FOR **LEASE**
± 1,900 – 14,000 SF Available



NEARBY
RETAILERS



Advance
Auto Parts



Wawa



GIANT

**WELLS
FARGO**



Cale Bruso | Adam Hagerman | Brad Rohrbaugh | Chad Stine

For Lease Information: 717.843.5555 | Learn more online at www.bennettwilliams.com



COMMERCIAL BROKERAGE. *Redefined.*

118 Eagleview Blvd

Exton, PA | 19341

For **LEASE**
± 1,900-14,000 SF

Property Overview

118 Eagle View Blvd features a former Rite Aid Pharmacy strategically positioned at a signalized intersection in the heart of the Exton retail market. This parcel offers an excellent opportunity for any user looking to enter the Exton market. With close proximity to retailers such as Giant, Target, Chick Fil A, Starbucks, Wawa and more. 118 Eagle View Blvd features a +/- 14,000 square foot building that can be subdivided into smaller suites for any retailer or medical user looking to enter into the Exton retail market. Contact our team today for more information!



POPULATION

3 MILE- 43,392
5 MILE- 95,432
7 MILE- 165,407



EMPLOYEES

3 MILE- 28,304
5 MILE- 47,316
7 MILE- 97,434



AVERAGE HHI

3 MILE- 183,303
5 MILE- 199,777
7 MILE- 190,801



HOUSEHOLDS

3 MILE- 18,298
5 MILE- 35,747
7 MILE- 62,572



Cale Bruso | Adam Hagerman | Brad Rohrbaugh | Chad Stine

For Lease Information: 717.843.5555 | Learn more online at www.bennettwilliams.com



COMMERCIAL BROKERAGE. *Redefined.*

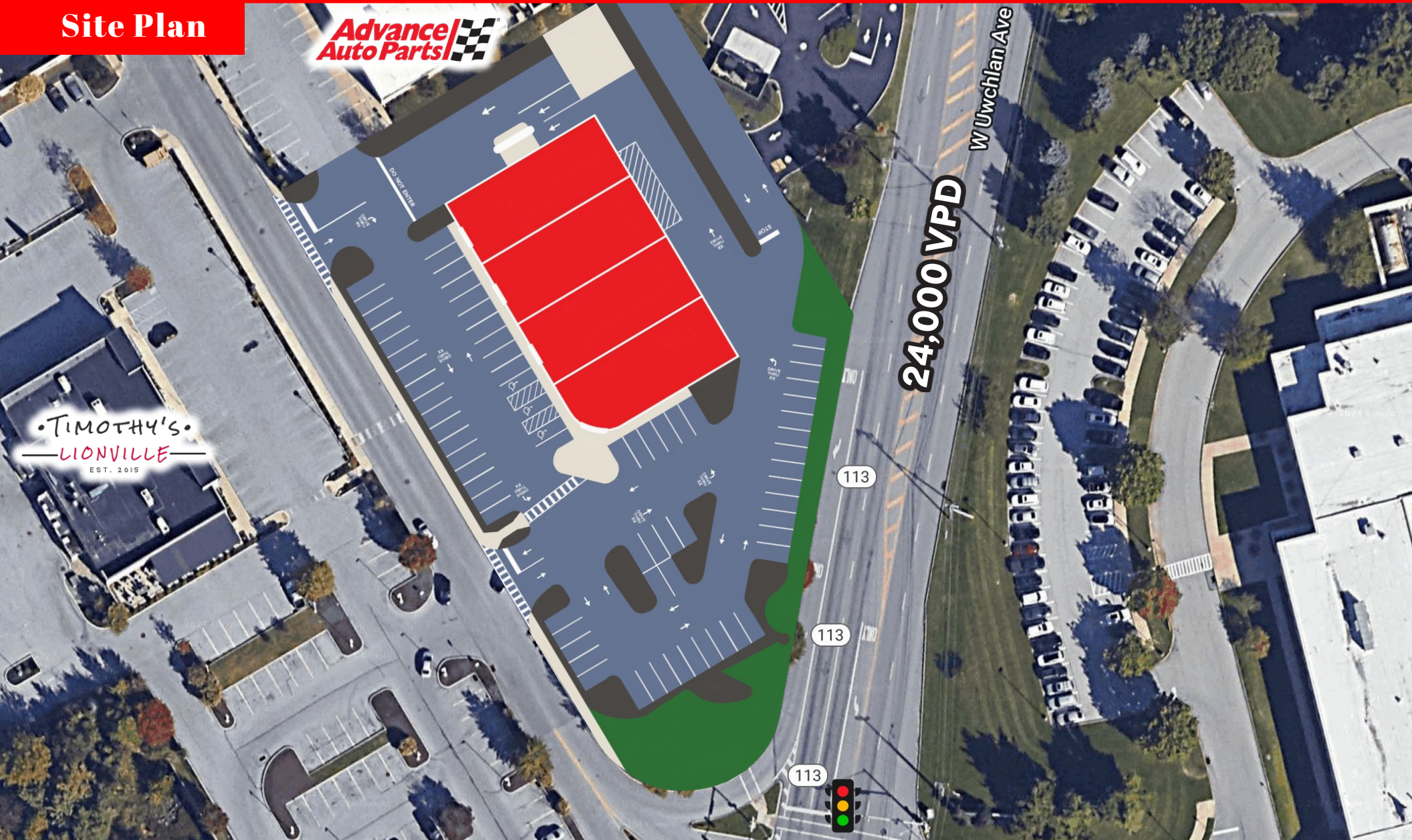
118 Eagleview Blvd

Exton, PA | 19341

For **LEASE**

± 1,900-14,000 SF

Site Plan



Cale Bruso | Adam Hagerman | Brad Rohrbaugh | Chad Stine

For Lease Information: 717.843.5555 | Learn more online at www.bennettwilliams.com



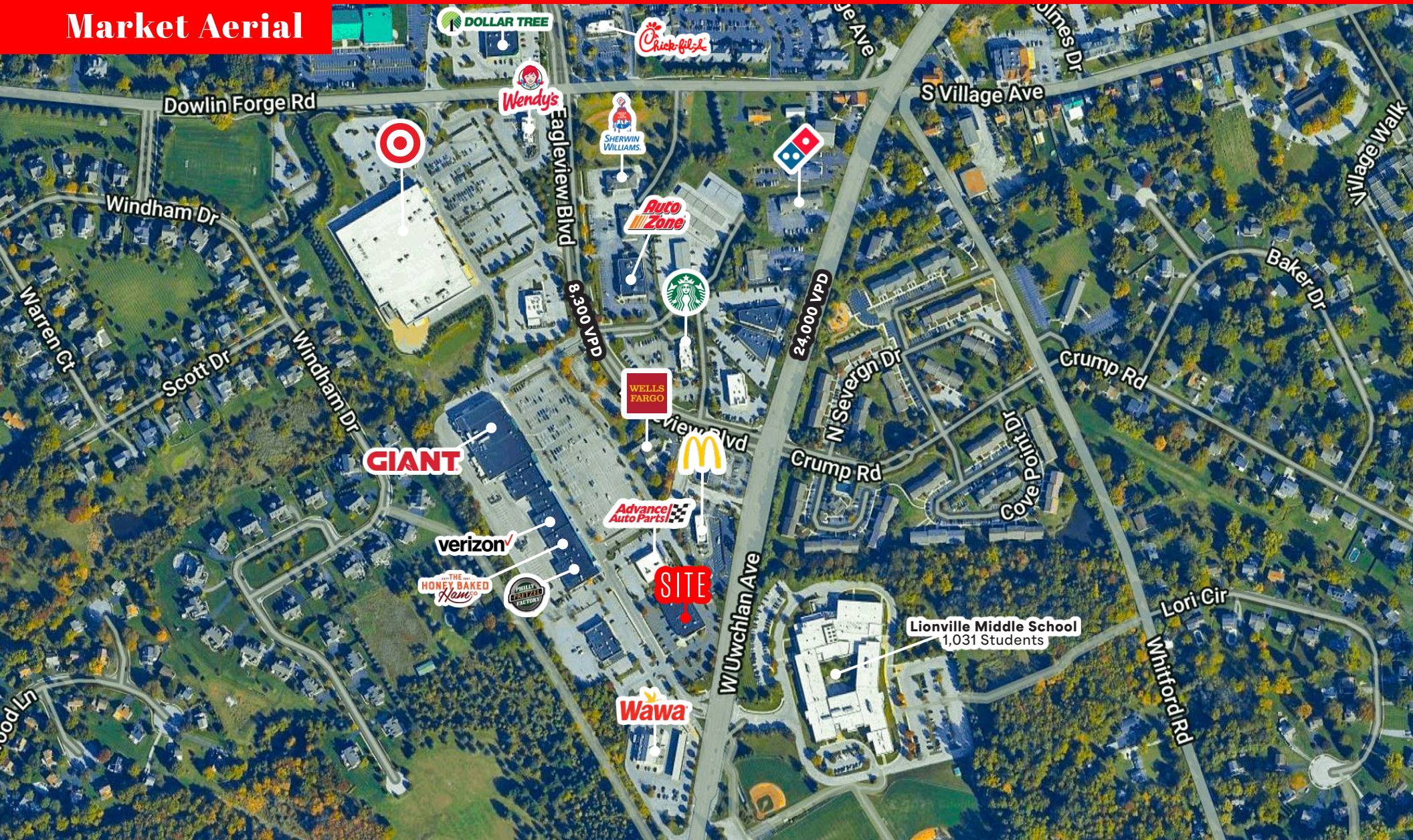
COMMERCIAL BROKERAGE. *Redefined.*

118 Eagleview Blvd

Exton, PA | 19341

For **LEASE**
± 1,900-14,000 SF

Market Aerial



Cale Bruso | Adam Hagerman | Brad Rohrbaugh | Chad Stine

For Lease Information: 717.843.5555 | Learn more online at www.bennettwilliams.com



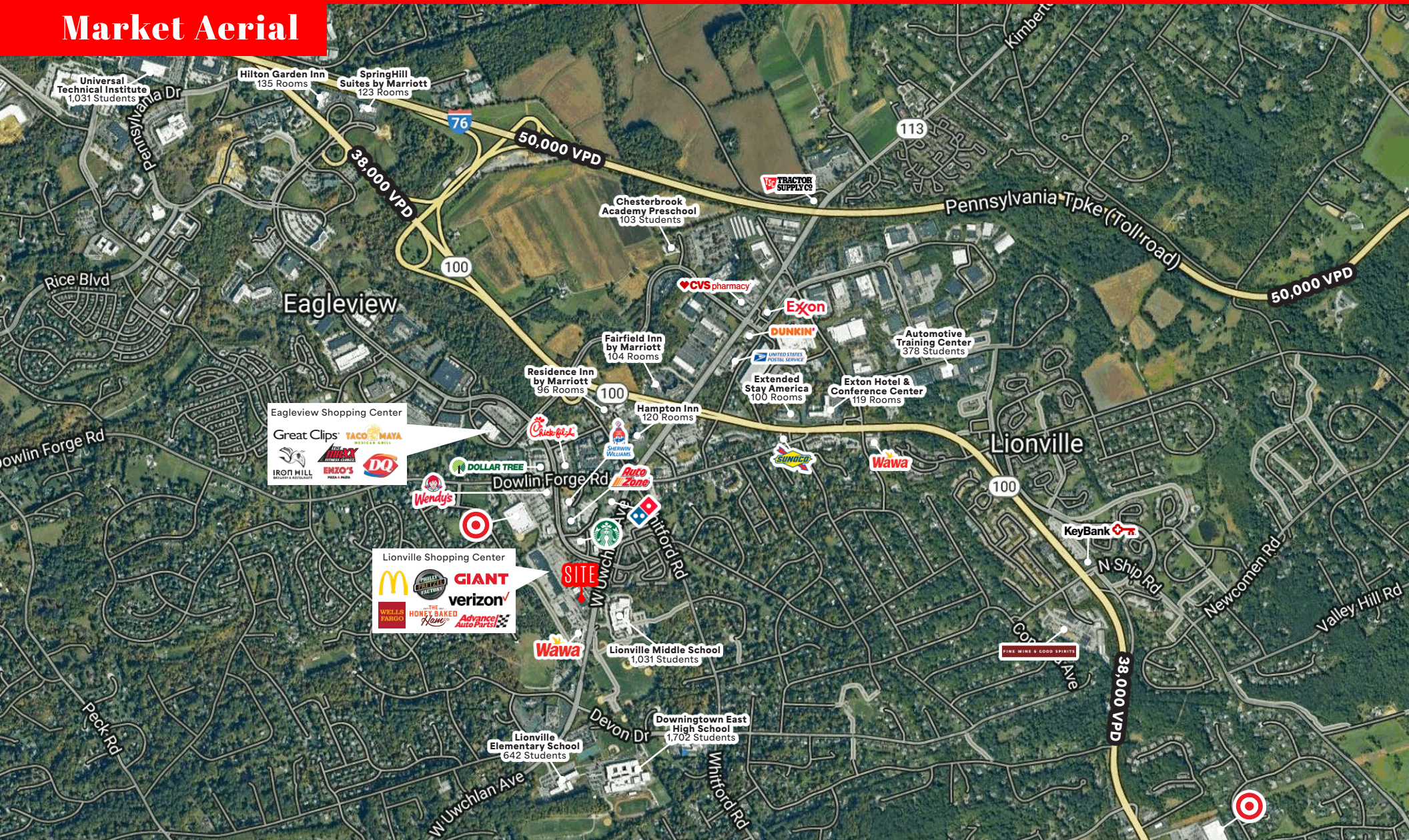
COMMERCIAL BROKERAGE. *Redefined.*

118 Eagleview Blvd

Exton, PA | 19341

For **LEASE**
± 1,900-14,000 SF

Market Aerial



Cale Bruso | Adam Hagerman | Brad Rohrbaugh | Chad Stine

For Lease Information: 717.843.5555 | Learn more online at www.bennettwilliams.com



COMMERCIAL BROKERAGE. *Redefined*

Bennett Williams

COMMERCIAL REAL ESTATE

OUR LOCATIONS:

YORK OFFICE:

3528 Concord Rd.
York, PA 17402

LANCASTER OFFICE:

150 Farmington Lane, Suite 201
Lancaster, PA 17601

EXTON OFFICE:

1 E. Uwchlan Ave.
Suite 409, Exton, PA 19341

WILLIAMSPORT OFFICE:

1000 Commerce Park Dr, Suite 310
Williamsport, PA 17701

WEST CHESTER OFFICE:

107 E Chestnut St, Suite 107
West Chester, PA 19380

NEW JERSEY OFFICE:

236 E. Route 38, Suite 130
Moorestown, NJ 08057

LISTING AGENTS:



Cale Bruso

CBruso@bennettwilliams.com



Adam Hagerman

AHagerman@bennettwilliams.com



Brad Rohrbaugh

BRohrbaugh@bennettwilliams.com



Chad Stine

CStine@bennettwilliams.com

CONTACT US

717.843.5555 | www.bennettwilliams.com

LANDLORD
REPRESENTATION

TENANT
REPRESENTATION

INVESTMENT
SALES

PROPERTY
MANAGEMENT



About Bennett Williams

Since its founding in 1956, Bennett Williams Commercial, Inc. has offered full Commercial Real Estate services to the Central Pennsylvania region and beyond. We have served thousands of commercial, industrial and retail clients as we have grown in size and reputation. With our team of both experienced and knowledgeable executives as well as young and energetic professionals, we have the team to handle any commercial real estate need.

Bennett Williams is a member of the Retail Brokers Network (RBN), a partnership of the best regional retail brokerage firms servicing all of the major markets across the United States. Our affiliates are handpicked ensuring that our clients receive top quality service and representation in any market they need help in, with 61 offices across 65+ markets and 700+ members.

