

PROGRESS PLAZA

99 N PROGRESS AVE • HARRISBURG, PA • 17109



**PYLON SPACE
AVAILABLE**

N PROGRESS AVE ±14,000 VPD

±200 - 3,550 SF

FOR LEASE

2ND FLOOR OFFICE SPACES AVAILABLE



Ashlee Lehman | Cale Bruso | Blake Shaffer | Brad Rohrbaugh | Chad Stine
For Property Information: 717.843.5555 | Learn more online at www.bennettwilliams.com

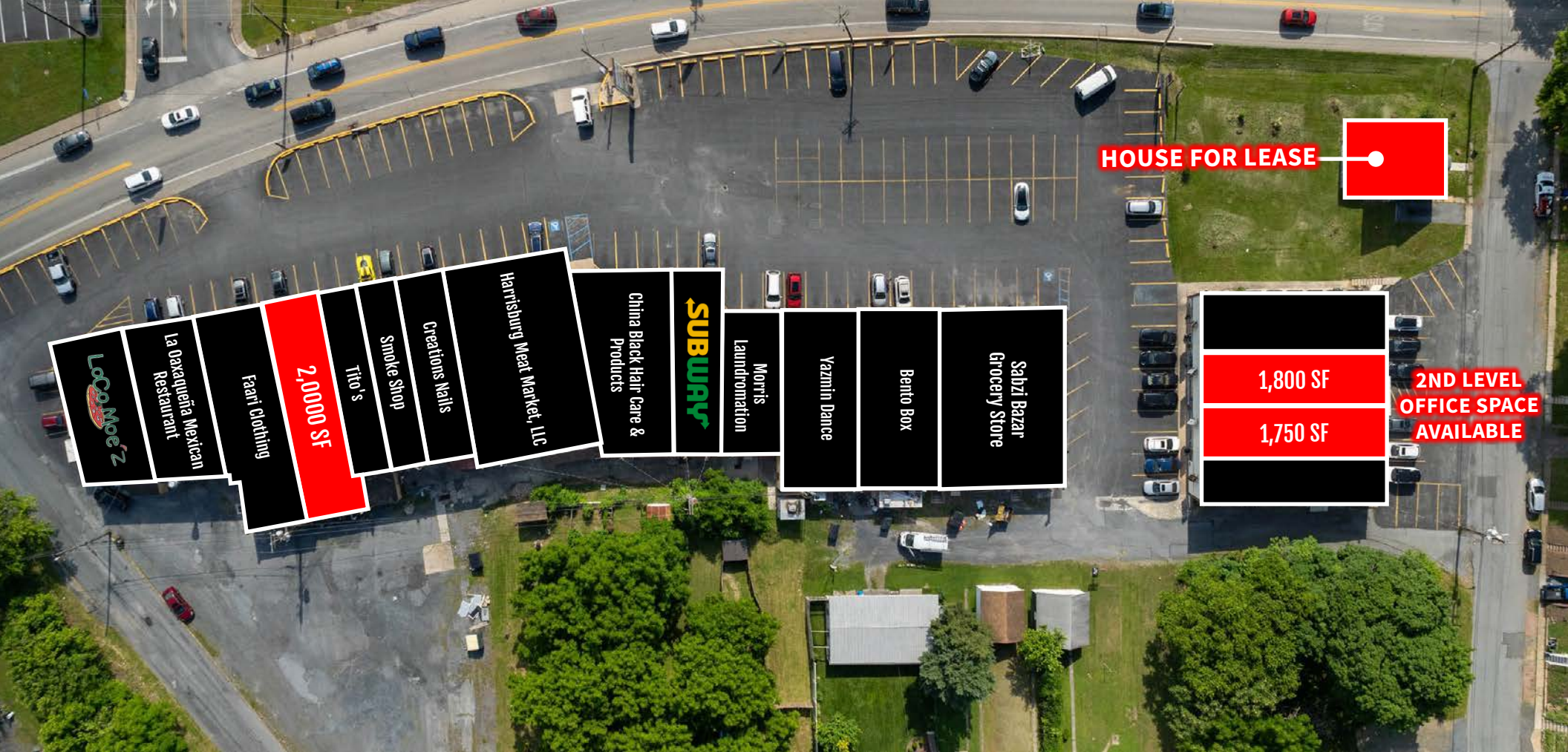
ACTIVE MEMBER OF:
RETAIL BROKERS NETWORK

COMMERCIAL BROKERAGE. *Redefined.*

PROPERTY OVERVIEW

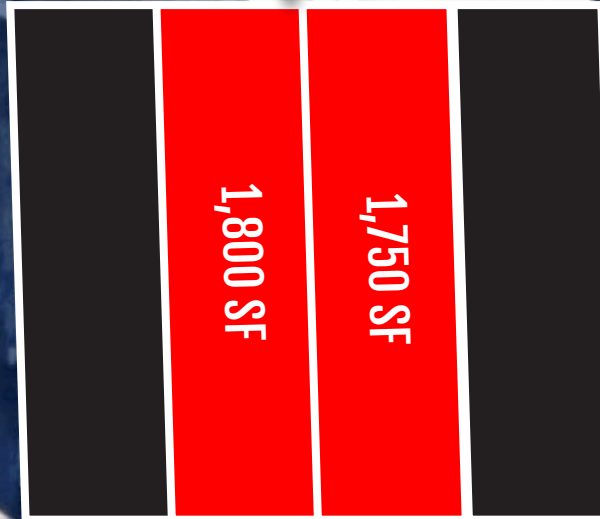
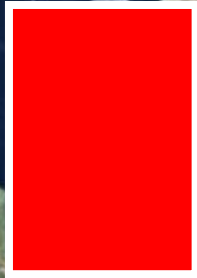
Progress Plaza is a neighborhood center located on N Progress Ave., just off Route 22, one of Central Pennsylvania's most sought-after corridors. It's ideally positioned near a majority of the market's retail and surrounded by approximately 84,000 roof tops and 198,000 people in a five-mile radius. Nearby national retailers include Dick's Sporting Goods, At Home, Target, Costco, and Home Depot, just to name a few. This site has 200 SF to 3,550 SF available for lease. This is a great opportunity for retail and or medical users who are looking to break into this highly populated market.





N PROGRESS AVE #14,000 VPD

**2ND LEVEL OFFICE SPACE
AVAILABLE
(±200 - 1,200 SF)**



HOUSE FOR LEASE

RESIDENTIAL OR COMMERCIAL USE
3 BEDROOM, 2 BATH
\$1,400 A MONTH
LANDLORD PAYS SEWER & TRASH

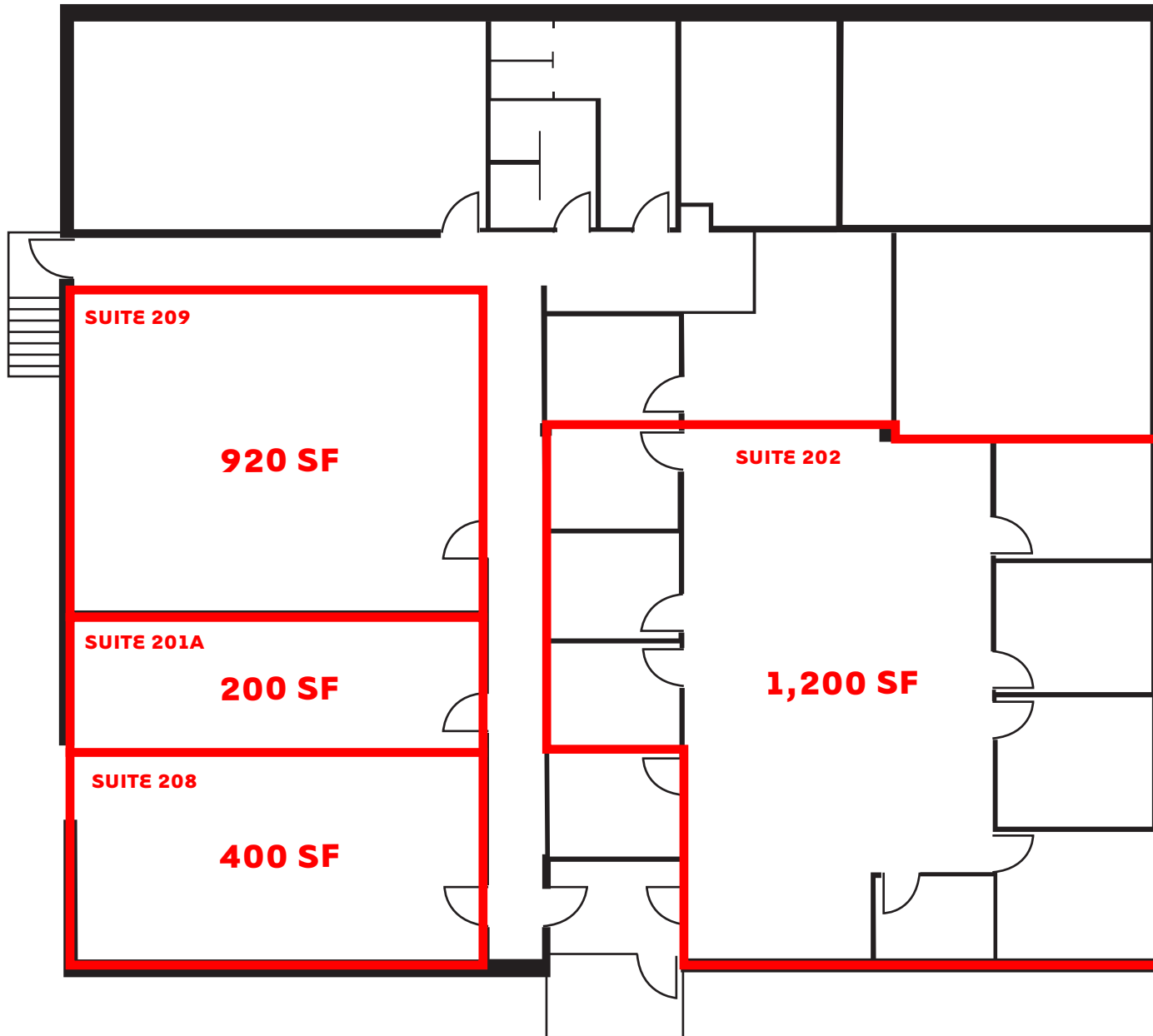


Ashlee Lehman | Cale Bruso | Blake Shaffer | Brad Rohrbaugh | Chad Stine
For Lease Information: 717.843.5555 | Learn more online at www.bennettwilliams.com



COMMERCIAL BROKERAGE. *Redefined.*

SECOND FLOOR OFFICE SPACES



SUITE 201A

400 SF
\$650 A MONTH

SUITE 208

200 SF
\$400 A MONTH

SUITE 209

920 SF
\$1,500 A MONTH

SUITE 202

1,200 SF
\$2,000 A MONTH





POPULATION

1 MILE- 14,109
3 MILE- 107,377
5 MILE- 198,046



EMPLOYEES

1 MILE- 3,770
3 MILE- 88,723
5 MILE- 141,473



AVERAGE HHI

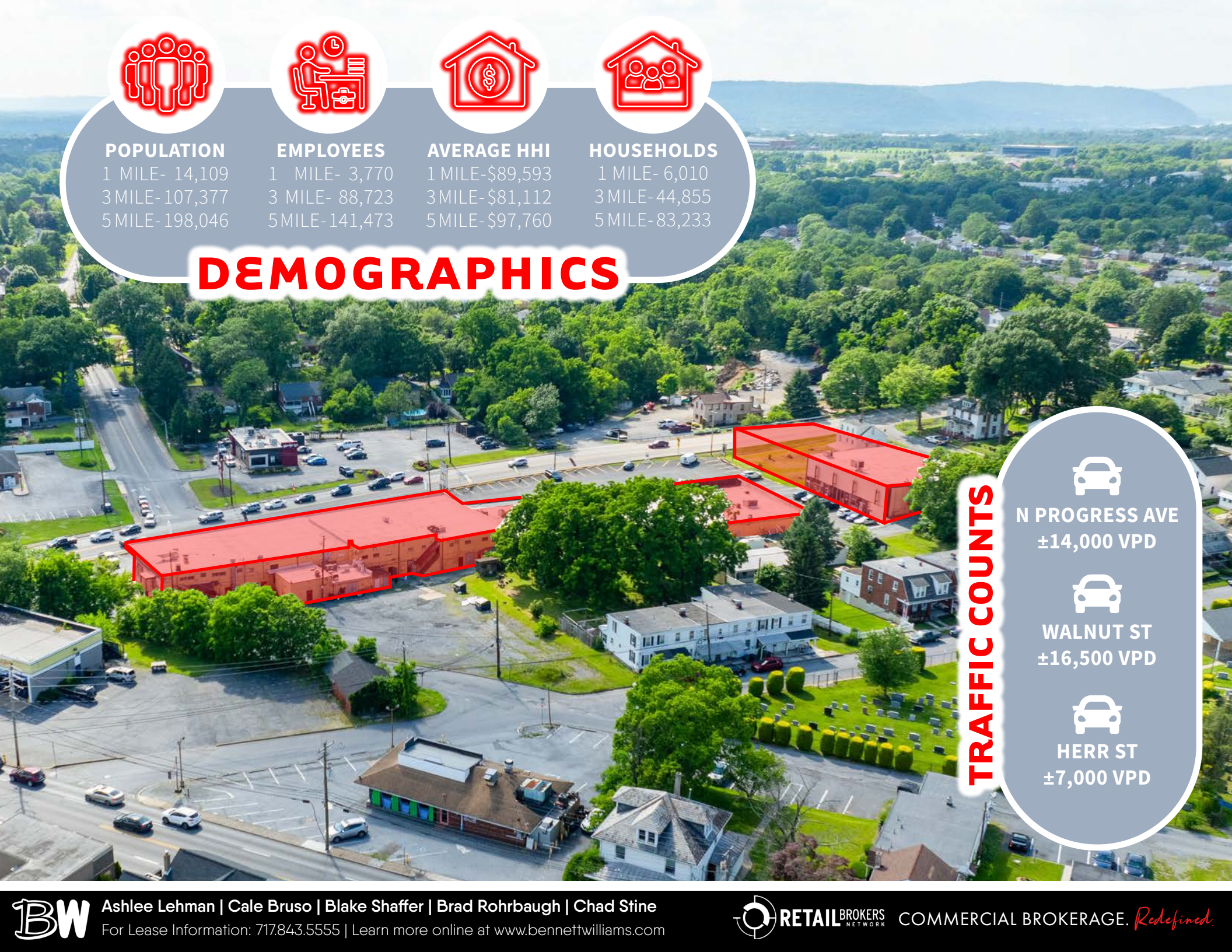
1 MILE-\$89,593
3 MILE-\$81,112
5 MILE-\$97,760



HOUSEHOLDS

1 MILE- 6,010
3 MILE- 44,855
5 MILE- 83,233

DEMOGRAPHICS



TRAFFIC COUNTS



N PROGRESS AVE
±14,000 VPD



WALNUT ST
±16,500 VPD



HERR ST
±7,000 VPD



MARKET AERIAL

COLONIAL COMMONS

HOBBY LOBBY EVERY SEASON STARTS AT SPORTING GOODS **DICK'S** 
JOANN **Marshalls** **ULTA**
five BELOW **Be HomeGoods** **Happy!** **CHIPOTLE MEXICAN GRILL**
OLD NAVY **FIVE GUYS** **BURGERS and FRIES** **noodles & COMPANY** **xfinity** **Guitar Center**
DOLLAR TREE **DAVID'S BRIDAL**

sleep number. **MATTRESS Warehouse** **Olive Garden**

PEARLE VISION **at home** **BB&T**
FINE WINE & GOOD SPIRITS **SportClips**

BEST BUY **AutoZone**

verizon **TACO BELL** **ALDI** **RITE AID**

McDonald's **POPEYES**

COLONIAL PARK MALL

Boscov's **FUNTIME CINEMAS** **LONGHORN STEAKHOUSE** **Red Lobster**

SHOPPES AT SUSQUEHANNA MARKETPLACE

ATHLETA **BANANA REPUBLIC** **J. Jill** **Clarks** **at&t** **chico's** **Starbucks**
Eddie Bauer **Macaroni GRILL** **WHITE HOUSE BLACK MARKET**
francesca's **pure barre** **LOFT** **NEW YORK & COMPANY**
WILLIAMS-SONOMA **TALBOTS** **HAND + STONE** **Plow & Hearth** **HARVEST**

First National Bank **Fulton Bank** **Arbys** **Turkey Hill** **BURGER KING** **Red Roof Inn** **REGAL** **HOME 2 SUITES BY WILTON** **Capital BLUE** **SpringHill Suites** **Marriott** **Hampton Inn & Suites**

PAXTON SQUARE

planet fitness **KARNS FOODS** **CVS pharmacy** **The UPS Store** **UPS** **goodwill**

PAXTON TOWNE CENTER

TARGET **COSTCO WHOLESALE** **KOHL'S** **BOB'S DISCOUNT FURNITURE** **BED BATH & BEYOND** **Michaels** **SUPERCUTS** **petco** **Panera BREAD** **Red Robin GOURMET BURGERS & BREWS** **Party City** **GameStop**

HARRISBURG EAST SC

GIANT **CVS pharmacy** **TOUCH OF COLOR FLOORING** **VCF** **VALUE CITY FURNITURE**

SITE

Wendy's

Bennett Williams

COMMERCIAL REAL ESTATE

OUR LOCATIONS:

YORK OFFICE:

3528 Concord Rd.
York, PA 17402

LANCASTER OFFICE:

150 Farmington Lane, Suite 201
Lancaster, PA 17601

EXTON OFFICE:

1 E. Uwchlan Ave.
Suite 409, Exton, PA 19341

STATE COLLEGE OFFICE:

330 Innovation Blvd, Suite 205
State College, PA 16803

WEST CHESTER OFFICE:

107 E Chestnut St, Suite 1
West Chester, PA 19380

NEW JERSEY OFFICE:

236 E. Route 38, Suite 130
Moorestown, NJ 08057

LISTING AGENTS:



Ashlee Lehman

ALehman@bennettwilliams.com



Cale Bruso

CBruso@bennettwilliams.com



Blake Shaffer

BShaffer@bennettwilliams.com



Brad Rohrbaugh

BRohrbaugh@bennettwilliams.com



Chad Stine

CStine@bennettwilliams.com

CONTACT US

717.843.5555 | www.bennettwilliams.com

LANDLORD
REPRESENTATION

TENANT
REPRESENTATION

INVESTMENT
SALES

PROPERTY
MANAGEMENT



About Bennett Williams

Since its founding in 1956, Bennett Williams Commercial, Inc. has offered full Commercial Real Estate services to the Central Pennsylvania region and beyond. We have served thousands of commercial, industrial and retail clients as we have grown in size and reputation. With our team of both experienced and knowledgeable executives as well as young and energetic professionals, we have the team to handle any commercial real estate need.

Bennett Williams is a member of the Retail Brokers Network (RBN), a partnership of the best regional retail brokerage firms servicing all of the major markets across the United States. Our affiliates are handpicked ensuring that our clients receive top quality service and representation in any market they need help in, with 61 offices across 65+ markets and 700+ members.

