

# PROGRESS PLAZA

99 N PROGRESS AVE • HARRISBURG, PA • 17109



±200 - 3,550 SF

**FOR LEASE**

**2ND FLOOR OFFICE SPACES AVAILABLE**

**PYLON SPACE  
AVAILABLE**



Ashlee Lehman | Cale Bruso | Blake Shaffer | Brad Rohrbaugh | Chad Stine  
For Property Information: 717.843.5555 | Learn more online at [www.bennettwilliams.com](http://www.bennettwilliams.com)

ACTIVE MEMBER OF:  
**RETAIL** BROKERS  
NETWORK

COMMERCIAL BROKERAGE. *Redefined.*



# PROPERTY OVERVIEW

Progress Plaza is a neighborhood center located on N Progress Ave., just off Route 22, one of Central Pennsylvania's most sought-after corridors. It's ideally positioned near a majority of the market's retail and surrounded by approximately 84,000 roof tops and 198,000 people in a five-mile radius. Nearby national retailers include Dick's Sporting Goods, At Home, Target, Costco, and Home Depot, just to name a few. This site has 200 SF to 3,550 SF available for lease. This is a great opportunity for retail and or medical users who are looking to break into this highly populated market.







Ashlee Lehman | Cale Bruso | Blake Shaffer | Brad Rohrbaugh | Chad Stine  
For Lease Information: 717.843.5555 | Learn more online at [www.bennettwilliams.com](http://www.bennettwilliams.com)



COMMERCIAL BROKERAGE. *Redefined.*



N PROGRESS AVE ±14,000 VPD

**2ND LEVEL OFFICE SPACE  
AVAILABLE**

**(±200 - 1,200 SF)**

**1,800 SF**

**1,750 SF**

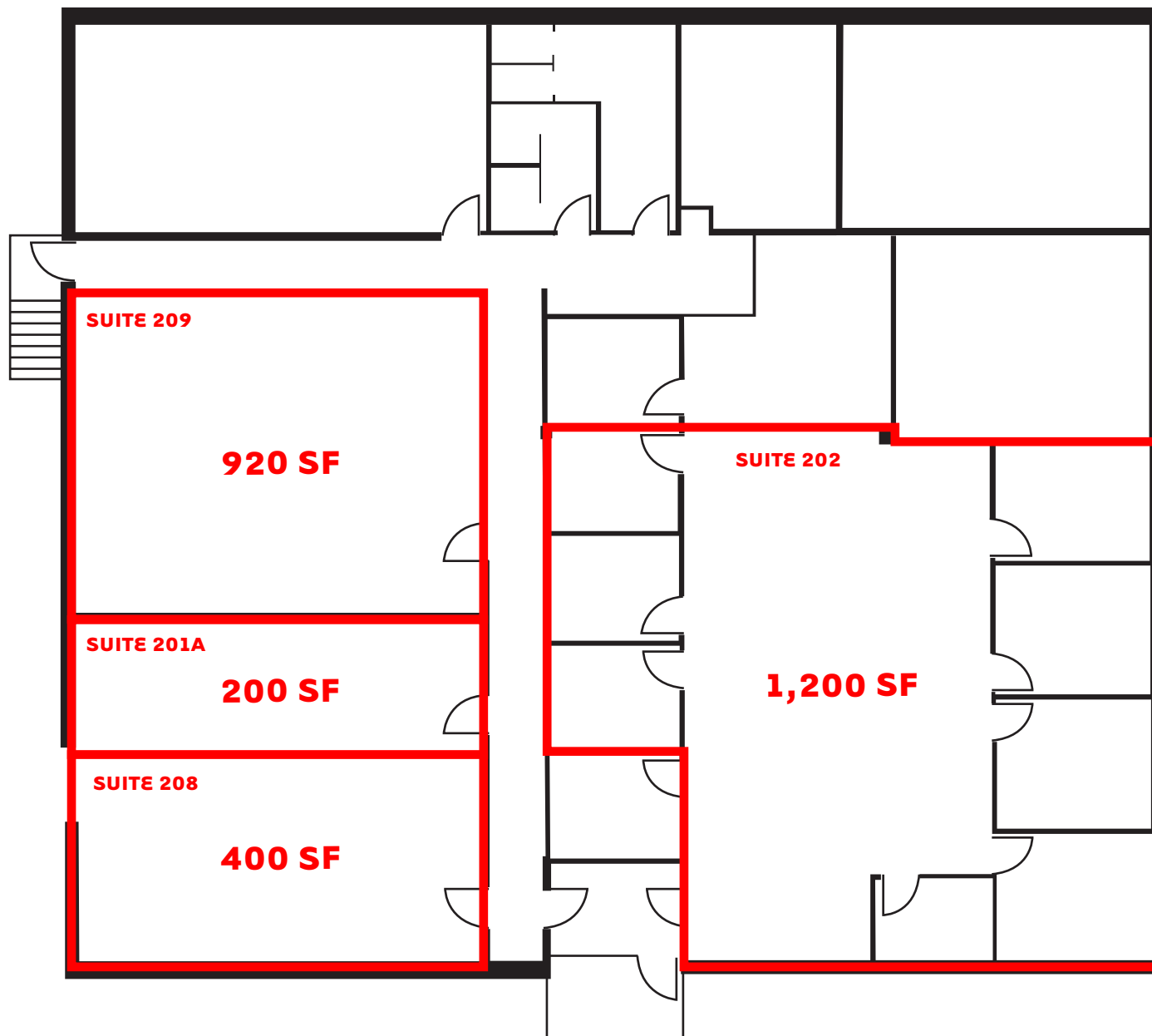


Ashlee Lehman | Cale Bruso | Blake Shaffer | Brad Rohrbaugh | Chad Stine  
For Lease Information: 717.843.5555 | Learn more online at [www.bennettwilliams.com](http://www.bennettwilliams.com)



COMMERCIAL BROKERAGE. *Redefined.*

# SECOND FLOOR OFFICE SPACES



## SUITE 201A

400 SF  
\$650 A MONTH

## SUITE 208

200 SF  
\$400 A MONTH

## SUITE 209

920 SF  
\$1,500 A MONTH

## SUITE 202

1,200 SF  
\$2,000 A MONTH







### POPULATION

1 MILE- 14,109  
3 MILE- 107,377  
5 MILE- 198,046



### EMPLOYEES

1 MILE- 3,770  
3 MILE- 88,723  
5 MILE- 141,473



### AVERAGE HHI

1 MILE-\$89,593  
3 MILE-\$81,112  
5 MILE-\$97,760



### HOUSEHOLDS

1 MILE- 6,010  
3 MILE- 44,855  
5 MILE- 83,233

## DEMOGRAPHICS



## TRAFFIC COUNTS



N PROGRESS AVE  
±14,000 VPD



WALNUT ST  
±16,500 VPD



HERR ST  
±7,000 VPD





# MARKET AERIAL

## SHOPPES AT SUSQUEHANNA MARKETPLACE



## COLONIAL COMMONS



## COLONIAL PARK MALL



## PAXTON SQUARE



## PAXTON TOWNE CENTER



## HARRISBURG EAST SC



**SITE**



Ashlee Lehman | Cale Bruso | Blake Shaffer | Brad Rohrbaugh | Chad Stine  
For Lease Information: 717.843.5555 | Learn more online at [www.bennettwilliams.com](http://www.bennettwilliams.com)



COMMERCIAL BROKERAGE. *Redefined.*



# Bennett Williams

COMMERCIAL REAL ESTATE

## OUR LOCATIONS:

### YORK OFFICE:

3528 Concord Rd.  
York, PA 17402

### EXTON OFFICE:

1 E. Uwchlan Ave.  
Suite 409, Exton, PA 19341

### WEST CHESTER OFFICE:

107 E Chestnut St, Suite 1  
West Chester, PA 19380

### LANCASTER OFFICE:

150 Farmington Lane, Suite 201  
Lancaster, PA 17601

### STATE COLLEGE OFFICE:

330 Innovation Blvd, Suite 205  
State College, PA 16803

### NEW JERSEY OFFICE:

236 E. Route 38, Suite 130  
Moorestown, NJ 08057

## LISTING AGENTS:



### Ashlee Lehman

ALehman@bennettwilliams.com



### Cale Bruso

CBruso@bennettwilliams.com



### Blake Shaffer

BShaffer@bennettwilliams.com



### Brad Rohrbaugh

BRohrbaugh@bennettwilliams.com



### Chad Stine

CStine@bennettwilliams.com

### CONTACT US

717.843.5555 | [www.bennettwilliams.com](http://www.bennettwilliams.com)

LANDLORD  
REPRESENTATION

TENANT  
REPRESENTATION

INVESTMENT  
SALES

PROPERTY  
MANAGEMENT



## About Bennett Williams

Since its founding in 1956, Bennett Williams Commercial, Inc. has offered full Commercial Real Estate services to the Central Pennsylvania region and beyond. We have served thousands of commercial, industrial and retail clients as we have grown in size and reputation. With our team of both experienced and knowledgeable executives as well as young and energetic professionals, we have the team to handle any commercial real estate need.

Bennett Williams is a member of the Retail Brokers Network (RBN), a partnership of the best regional retail brokerage firms servicing all of the major markets across the United States. Our affiliates are handpicked ensuring that our clients receive top quality service and representation in any market they need help in, with 61 offices across 65+ markets and 700+ members.

